

PLEASE CHECK WWW.MOLEX.COM FOR LATEST PART INFORMATION

Part Number: [1710970011](#)
Status: **Active**
Overview: EXTreme EnergetiC High-Current Connector System
Description: EXTreme EnergetiC Right-Angle Plug Assembly, 29 Circuits (25 Signal/4 Power) with Press-Fit and Pegs Mounting

Documents:

3D Model (PDF)	Packaging Specification PK-171097-0002-001 (PDF)
3D Model	Test Summary TS-171097-0001-001 (PDF)
Drawing (PDF)	Datasheet (PDF)
Product Specification PS-171097-1000-001 (PDF)	RoHS Certificate of Compliance (PDF)

Agency Certification

UL E29179

Application tooling part link

Application Tooling Part Link 62100-7740

General

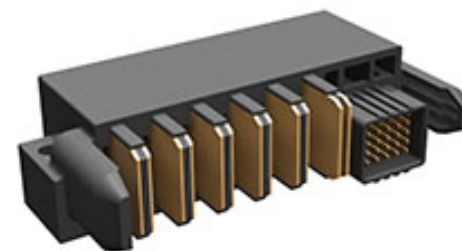
Product Family	PCB Headers
Series	171097
Application	Board-to-Board, Power, Signal
Overview	EXTreme EnergetiC High-Current Connector System
Product Name	EXTreme EnergetiC
UPC	887191586601

Physical

(p)ower-(s)ignal Configuration	25s - 4p
Breakaway	No
Circuits (Loaded)	29
Circuits (maximum)	29
Color - Resin	Black
Durability (mating cycles max)	200
First Mate / Last Break	Yes
Flammability	94V-0
Glow-Wire Capable	No
Guide to Mating Part	Yes
Material - Metal	High Performance Alloy (HPA)
Material - Plating Mating	Gold
Material - Plating Termination	Tin
Material - Resin	Liquid Crystal Polymer
Net Weight	37.053/g
Number of Rows	5
Orientation	Right Angle
PC Tail Length	2.71mm, 2.74mm
PCB Thickness - Recommended	1.58mm
Packaging Type	Tray
Pitch - Mating Interface	2.00mm, 6.50mm
Plating min - Mating	0.762µm
Plating min - Termination	2.540µm
Polarized to Mating Part	Yes
Polarized to PCB	Yes
Surface Mount Compatible (SMC)	Yes
Temperature Range - Operating	-40° to +105°C
Termination Interface: Style	Through Hole - Compliant Pin

Electrical

Current - Maximum per Contact 100.0A



Series image - Reference only

EU ELV

Not Relevant

EU RoHS

Compliant

REACH SVHC

Not Contained Per -
D(2021)4569-DC (8
July 2021)

Halogen-Free

Status

Low-Halogen

For more information, please visit [Contact US](#)

China ROHS

ELV

RoHS Phthalates

Green Image

Not Relevant

Not Contained

Search Parts in this Series

[171097 Series](#)

Mates With

[EXTreme EnergetiC PCB Receptacle
171098](#)

Application Tooling | FAQ

Tooling specifications and manuals are found by selecting the products below. Crimp Height Specifications are then contained in the Application Tooling Specification document.

Global

Description

Product #

Plug Removal Tool for EXTreme EnergetiC Right-Angle Plug Assembly	621007740
---	---------------------------

Voltage - Maximum 40V

Solder Process Data

Duration at Max. Process Temperature (seconds) 040

Lead-freeProcess Capability SMC&WAVE

Max. Cycles at Max. Process Temperature 003

Process Temperature max. C 260

Material Info

Reference - Drawing Numbers

Packaging Specification PK-171097-0002-001

Product Specification PS-171097-1000-001

Sales Drawing SD-171097-0001-001

Test Summary TS-171097-0001-001

This document was generated on 01/03/2022

PLEASE CHECK WWW.MOLEX.COM FOR LATEST PART INFORMATION