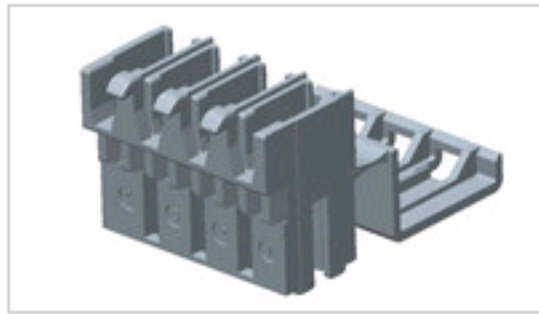


1703100-1 Product Details

[Share](#) | [Print](#) | [Email](#)


Active

5mm Centerline IDC Connectors (AMP MT-Edge)

4POS MT - EDGE HOUSING

1703100-1

TE Internal Number: 1703100-1

Product Highlights [View All](#)

- MT Edge Product Line
- Connector Style = Receptacle
- 4 Positions
- Number of Rows = 1
- 5.00 mm Centerline

- [Pricing & Availability](#)
- [Request Sample](#)
- [Add to My Part List](#)
- [Buy Product through Distributor](#)

Feedback

[Documents](#) | [Features](#) | [Compliance](#)

Please Note:

Use the Product Drawing for all design activity

| Product Type Features | |
|-------------------------------|---------------------------------------|
| Product Line | MT Edge |
| Mount Angle | Right Angle |
| Body Features | |
| Insulation Displacement Slots | 4 |
| Keying Rib Location | After Last Cavity, Between Cavity 1/2 |
| Keying Cavity Number | 1+2 |
| Housing Features | |
| Connector Style | Receptacle |
| Centerline (mm [in]) | 5.00 [0.197] |
| Housing Color | Natural |
| Housing Material | PA6 |
| Configuration Features | |
| Number of Positions | 4 |
| Number of Rows | 1 |
| Locking Clip Location | Between Cavity 1/2, Displaced |
| Locking Clip Cavity Number | 1+2 |

| Industry Standards | |
|-----------------------------|------------------------------------|
| RoHS/ELV Compliance | RoHS compliant, ELV compliant |
| Lead Free Solder Processes | Not relevant for lead free process |
| RoHS/ELV Compliance History | Always was RoHS compliant |
| UL Flammability Rating | UL 94V-2 |
| Conditions for Usage | |
| For Use With | Contacts: 926770, 926972 or 926917 |
| Operation/Application | |
| Industry Application | Appliances |
| Packaging Features | |
| Packaging Method | Bag/Box |
| Packaging Quantity | 2,000 |
| Other | |
| Brand | AMP |

Related Products

Not quite the product you're looking for?
[Find Similar Products](#)

[View Part in Product Feature Selector](#)

[Check for Tooling](#)

- Corporate Information**
- [About TE](#)
 - [Investors](#)
 - [News Room](#)
 - [Supplier Portal](#)
 - [Careers](#)
 - [Terms & Conditions](#)
 - [Privacy Policy](#)
 - [Global Accessibility Statement](#)

- Quick Links**
- [Distributor Inventory](#)
 - [Product Cross Reference](#)
 - [Documents & Drawings](#)
 - [Product Compliance Support Center](#)
 - [Site Map](#)

- Customer Support**
- [Email or Chat With Us](#)
 - [Find a Phone Number](#)
 - [Knowledge Base](#)
 - [Manage Your Account](#)

Keep Me Informed