

PLEASE CHECK WWW.MOLEX.COM FOR LATEST PART INFORMATION

Part Number: [170001-0112](#)
Status: **Active**
Overview: [Mega-Fit Power Connectors](#)
Description: Mega-Fit™ Receptacle Housing, Dual Row, 12 Circuit, Glow-Wire Compliant, Bag

Documents:

[3D Model](#) [Test Summary TS-170001-001 \(PDF\)](#)
[Drawing \(PDF\)](#) [RoHS Certificate of Compliance \(PDF\)](#)

Agency Certification

CSA LR19980
 UL E29179

General

Product Family Crimp Housings
 Series [170001](#)
 Application Power, Wire-to-Board, Wire-to-Wire
 Overview [Mega-Fit Power Connectors](#)
 Product Name Mega-Fit™
 UPC 887191246833

Physical

Circuits (maximum) 12
 Circuits Detail 12
 Color - Resin Black
 Flammability 94V-2
 Gender Male
 Glow-Wire Compliant Yes
 Lock to Mating Part Yes
 Material - Resin Nylon
 Net Weight 5.600/g
 Number of Rows 2
 Packaging Type Bag
 Panel Mount No
 Pitch - Mating Interface 5.70mm
 Pitch - Termination Interface 5.70mm
 Polarized to Mating Part Yes
 Temperature Range - Operating -40°C to +105°C

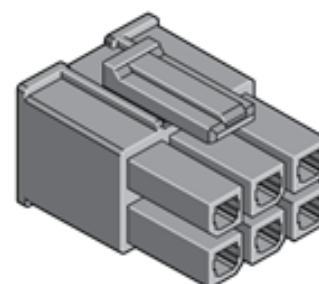
Electrical

Current - Maximum per Contact 23A

Material Info

Reference - Drawing Numbers

Sales Drawing SD-170001-0100
 Test Summary TS-170001-001



Series

image - Reference only

EU RoHS

ELV and RoHS Compliant
REACH SVHC Contains SVHC: No
Low-Halogen Status Not Low-Halogen

China RoHS



Need more information on product environmental compliance?

Email productcompliance@molex.com
 For a multiple part number RoHS Certificate of Compliance, [click here](#)

Please visit the [Contact Us](#) section for any non-product compliance questions.

Search Parts in this Series

[170001Series](#)

Mates With

Mega-Fit™ Header [76825](#) , [76829](#) , [172064](#) , [172065](#)

Use With

Mega-Fit™ Crimp Terminals, [172063](#)