

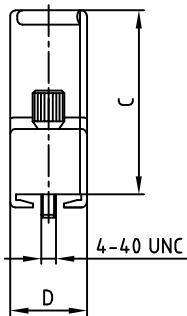
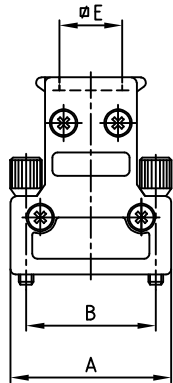
used for: D-SUB

⑨ ④ ④ ④ ④

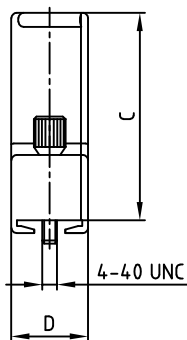
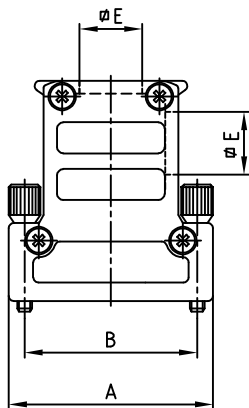
③

No. of pos.	A	B	C	D	∅E	Part No. Bulk package	Part No. Single package
9	31.0	25.0	35.5	14.8	12.1	165X11609X	165X11609XE
15	39.4	33.3	40.0	14.8	12.1	165X11619X	165X11619XE
25	53.2	47.0	40.0	14.8	12.1	165X11629X	165X11629XE
37	69.6	63.5	40.0	14.8	12.1	165X11639X	165X11639XE

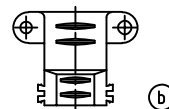
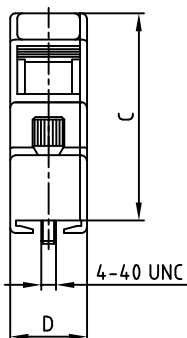
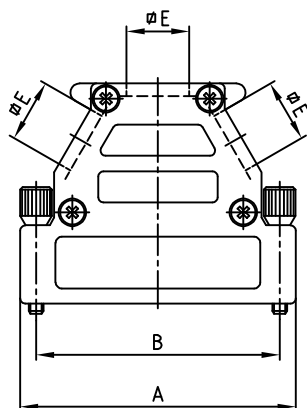
9pos. ③ ④



15pos. ③ ④



25+37pos. ③ ④ ⑨



Cable clamp has to be ordered separately.
9-37 pos. Part-no. 160X11189X

- ⑤ Delivery includes:
- Hood with cover
 - Blanking plug:
 - 9pos.: without blanking plug
 - 15pos.: with 1 blanking plug
 - 25+37pos.: with 2 blanking plugs
 - 4 screws for fixing
 - 1 earth screw
 - 2 jack screws

RoHS compliant

THIS DRAWING MAY NOT BE COPIED OR REPRODUCED IN ANY WAY, AND MAY NOT BE PASSED ON TO A THIRD PARTY, WITHOUT WRITTEN PERMISSION. OWNERSHIP AND COPYRIGHT OF CONEC GMBH DO NOT ALTER CAD DRAWING BY HAND

rev.	description	date	name	tolerance	dim. in mm	
2 x g	Ä21-0220	13.10.21	JLE	200Z	date	name
3 x f	Ä20-0414	13.10.20	JLE	drawn	29.01.	Parei
1 x e	Ä 4037	06.07.11	Lehmen	appd.	30.01.	E. Mickenbecker
4 x d	Ä 3657	18.05.10	Lehmen	norm		
4 x c	Ä 2754	23.07.07	Lehmen	d-old		
1 x b	Ä 2459	13.03.06	HS			
a	Original					



scale:	1:1
material:	HOOD WITH COVER: DIE-CAST ZINC
title:	METAL HOOD EMI/RFI SHIELDING 9-37pos. with jack screws 4-40 UNC
dwg no:	16K1A462A
part no:	SEE TABLE
DIN-A	3
sh:	1/1