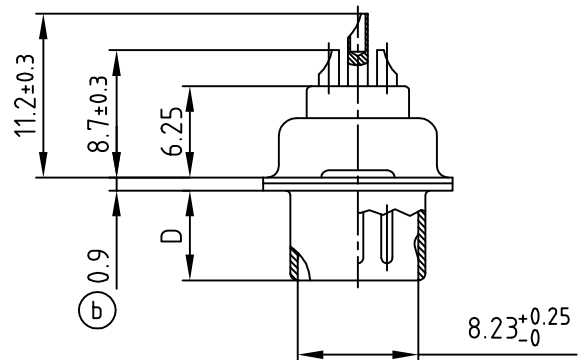
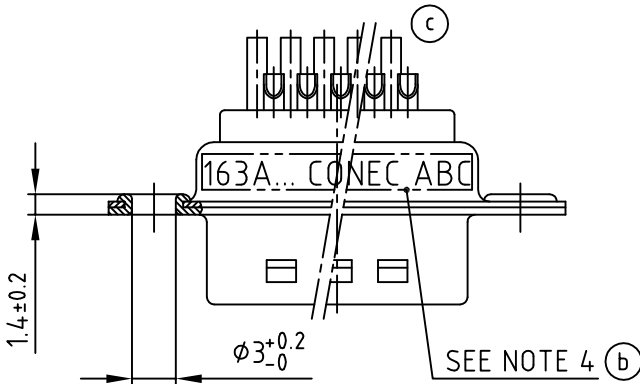
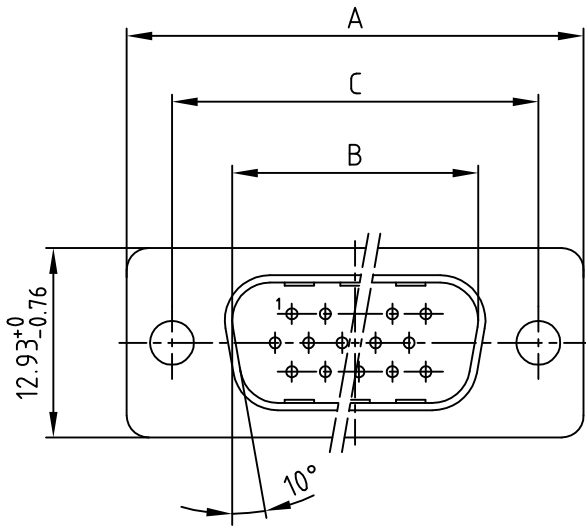


used for: D-SUB HD

Part-NO.	POS.	A -0.76	B $+0.25$	C	D -0.3
163A16599X	15	31.19	16.79	25.00 $+0.12$ -0.13	6.12
163A16609X	26	39.52	25.12	33.30 $+0.15$ -0.1	6.12
163A16619X	44	53.42	38.84	47.04 ± 0.13	5.99
163A16629X	62	69.70	55.30	63.50 ± 0.13	5.99



(c) (b) NOTES:

- METALSHELLS: STEEL; min. 315µin TIN over 40-80µin Nickel
- INSULATORS: PBT GF UL 94 V-0, BLACK
- CONTACTS: COPPER ALLOY
PLATING: 8µin HARD GOLD over min. 50µin NICKEL
SOLDER CUP ACCEPTS CABLE AWG 22
- CONNECTOR IS PART MARKED: PART-NO. CONEC ABC

Directive 2002/95/EC
„RoHS“
Compliant

THIS DRAWING MAY NOT BE COPIED OR REPRODUCED IN ANY WAY, AND MAY NOT BE PASSED ON TO A THIRD PARTY WITHOUT WRITTEN PERMISSION.
OWNERSHIP AND COPYRIGHT OF CONEC GmbH
DO NOT ALTER CAD DRAWING BY HAND

CONEC CORPORATION BRAMPTON, ONTARIO				tolerance				scale: 2:1
2000	date	name		title: D-SUB HD MALE 15-62pos. SOLDER CUP				
drawn	03.07.	A. Mickenbecker						
appd.	03.07.	E. Mickenbecker						
norm								
d-old				dwg no:		AutoCAD 2000	DIN-A	
2 x c	Ä3179	06.11.2008	Sonne			16K1A019A		
3 x b	Ä 2226	10.05.2005	Lehmen			4		
rev.	description	date	name			sh: 1/1		
				part no:		SEE TABLE		

2000		date	name
drawn	03.07.	A. Mickenbecker	
appd.	03.07.	E. Mickenbecker	
norm			
d-old			

scale: 2:1	
material: SEE NOTES	
title: D-SUB HD MALE 15-62pos. SOLDER CUP	
dwg no:	AutoCAD 2000
DIN-A	
4	
sh: 1/1	
part no: SEE TABLE	