

# RC-63P1N120000 - Contact insert



1603538

<https://www.phoenixcontact.com/pc/products/1603538>

Please be informed that the data shown in this PDF document is generated from our Online Catalog. Please find the complete data in the user documentation. Our General Terms of Use for Downloads are valid.



Contact insert, number of positions: 6+3, type of contact: Pin, Solder connection, Alternative product in accordance with RoHS II without Exemption 6c (Pb <0.1%) item no.: 1241644

## Commercial Data

Item number	1603538
Packing unit	10 pc
Minimum order quantity	10 pc
Product Key	ABRADL
GTIN	4046356245944
Weight per Piece (including packing)	9.6 g
Weight per Piece (excluding packing)	9.56 g
Customs tariff number	85366990
Country of origin	DE

# RC-63P1N120000 - Contact insert



1603538

<https://www.phoenixcontact.com/pc/products/1603538>

## Technical Data

### Product properties

Product type	Contact insert
Number of positions	9
Connection profile	6+3
Application	Signal
Series	NC RC RM TU UC
Coding	N

### Electrical properties

#### Contact

Contact diameter	2 mm
Min. cross section	0.08 mm <sup>2</sup>
Max. cross section	2.5 mm <sup>2</sup>
Max. current	20 A
Nominal voltage U <sub>N</sub>	48 V AC 74 V DC
Overvoltage category	III
Degree of pollution	3
Rated surge voltage	1.5 kV

#### Contact

Contact diameter	1 mm
Min. cross section	0.08 mm <sup>2</sup>
Max. cross section	1 mm <sup>2</sup>
Max. current	8 A

### Material specifications

Insulator material	PBT
Contact material	CuZn
Contact surface	Nickel-plated, gold coating

### Connector

Direction of rotation	Standard
-----------------------	----------

### Mechanical properties

#### Mechanical data

Insertion/withdrawal cycles	50
-----------------------------	----

# RC-63P1N120000 - Contact insert

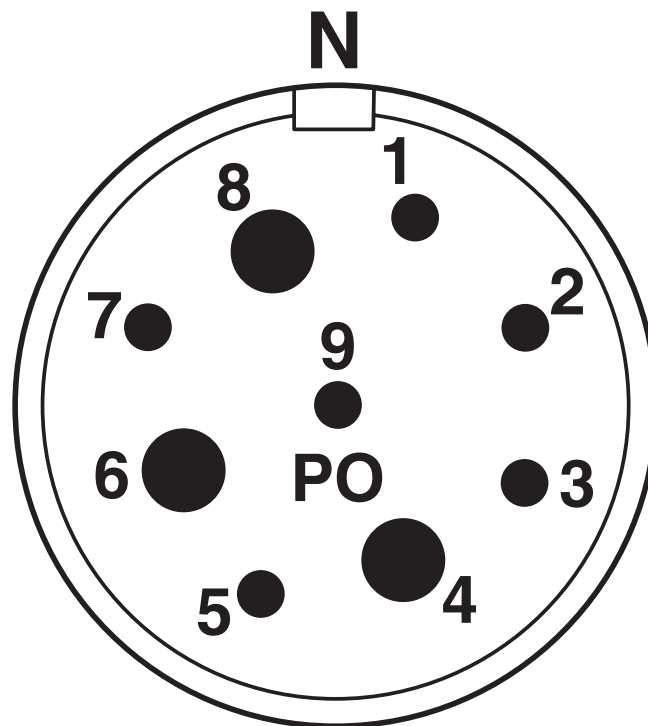


1603538

<https://www.phoenixcontact.com/pc/products/1603538>

## Drawings

Schematic diagram



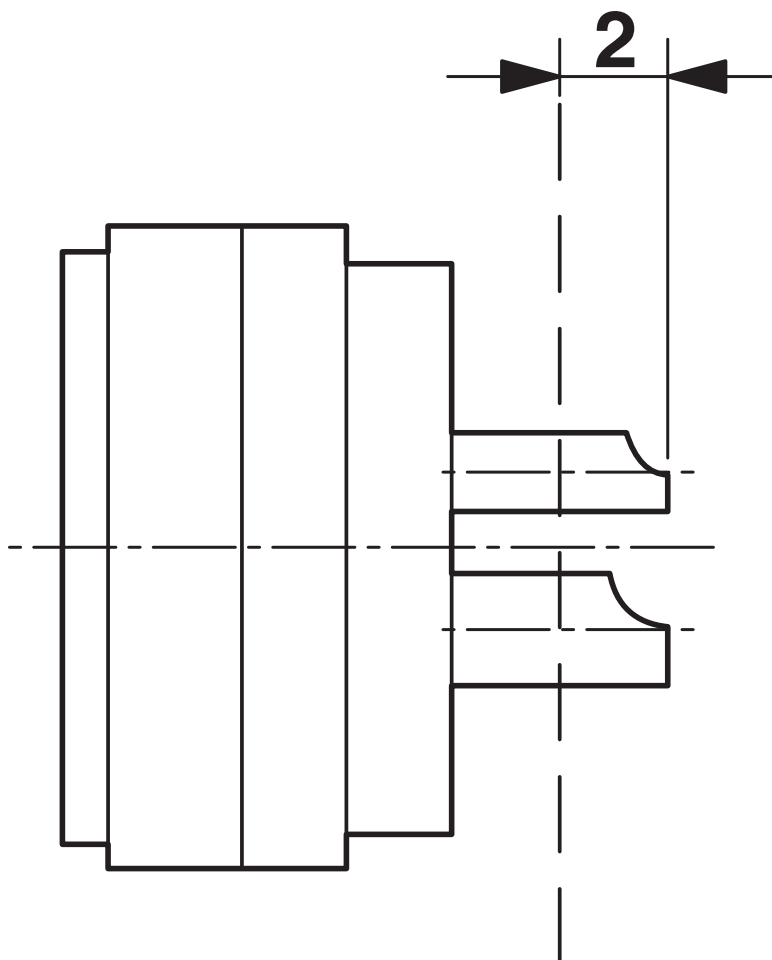
# RC-63P1N120000 - Contact insert

1603538

<https://www.phoenixcontact.com/pc/products/1603538>



Schematic diagram



# RC-63P1N120000 - Contact insert



1603538

<https://www.phoenixcontact.com/pc/products/1603538>

## Classifications

### ECLASS

ECLASS-9.0	27440205
ECLASS-10.0.1	27440205
ECLASS-11.0	27440223

### ETIM

ETIM 8.0	EC003557
----------	----------

### UNSPSC

UNSPSC 21.0	39121400
-------------	----------

# RC-63P1N120000 - Contact insert



1603538

<https://www.phoenixcontact.com/pc/products/1603538>

## Environmental Product Compliance

REACH SVHC	Lead 7439-92-1
China RoHS	Environmentally Friendly Use Period = 50 years
	For information on hazardous substances, refer to the manufacturer's declaration available under "Downloads"

Phoenix Contact 2023 © - all rights reserved

<https://www.phoenixcontact.com>

PHOENIX CONTACT GmbH & Co. KG

Flachsmarktstraße 8

D-32825 Blomberg

+49 (0) 5235-3 00

[info@phoenixcontact.com](mailto:info@phoenixcontact.com)