

RC-19S1N120000 - Contact insert



1602749

<https://www.phoenixcontact.com/pc/products/1602749>

Please be informed that the data shown in this PDF document is generated from our Online Catalog. Please find the complete data in the user documentation. Our General Terms of Use for Downloads are valid.



Contact insert, number of positions: 16+3, type of contact: Socket, Solder connection, Alternative product in accordance with RoHS II without Exemption 6c (Pb <0.1%) item no.: 1241521

Commercial Data

Item number	1602749
Packing unit	10 pc
Minimum order quantity	1 pc
Product Key	ABRADL
GTIN	4046356241359
Weight per Piece (including packing)	7.92 g
Weight per Piece (excluding packing)	6.04 g
Customs tariff number	85366990
Country of origin	DE

RC-19S1N120000 - Contact insert



1602749

<https://www.phoenixcontact.com/pc/products/1602749>

Technical Data

Product properties

Product type	Contact insert
Number of positions	19
Connection profile	16+3
Application	Signal
Series	NC RC RM TU UC
Coding	N

Electrical properties

Contact

Contact diameter	1.5 mm
Min. cross section	0.08 mm ²
Max. cross section	1 mm ²
Max. current	10 A
Nominal voltage U _N	48 V AC 74 V DC
Overvoltage category	III
Degree of pollution	3
Rated surge voltage	1.5 kV

Contact

Contact diameter	1.5 mm
------------------	--------

Contact

Contact diameter	1 mm
Min. cross section	0.08 mm ²
Max. cross section	1 mm ²
Max. current	8 A

Material specifications

Insulator material	PA66
Contact material	CuZn
Contact surface	Nickel-plated, gold coating

Connector

Direction of rotation	Standard
-----------------------	----------

Mechanical properties

Mechanical data

RC-19S1N120000 - Contact insert



1602749

<https://www.phoenixcontact.com/pc/products/1602749>

Insertion/withdrawal cycles	100
-----------------------------	-----

RC-19S1N120000 - Contact insert

1602749

<https://www.phoenixcontact.com/pc/products/1602749>



Drawings

Schematic diagram



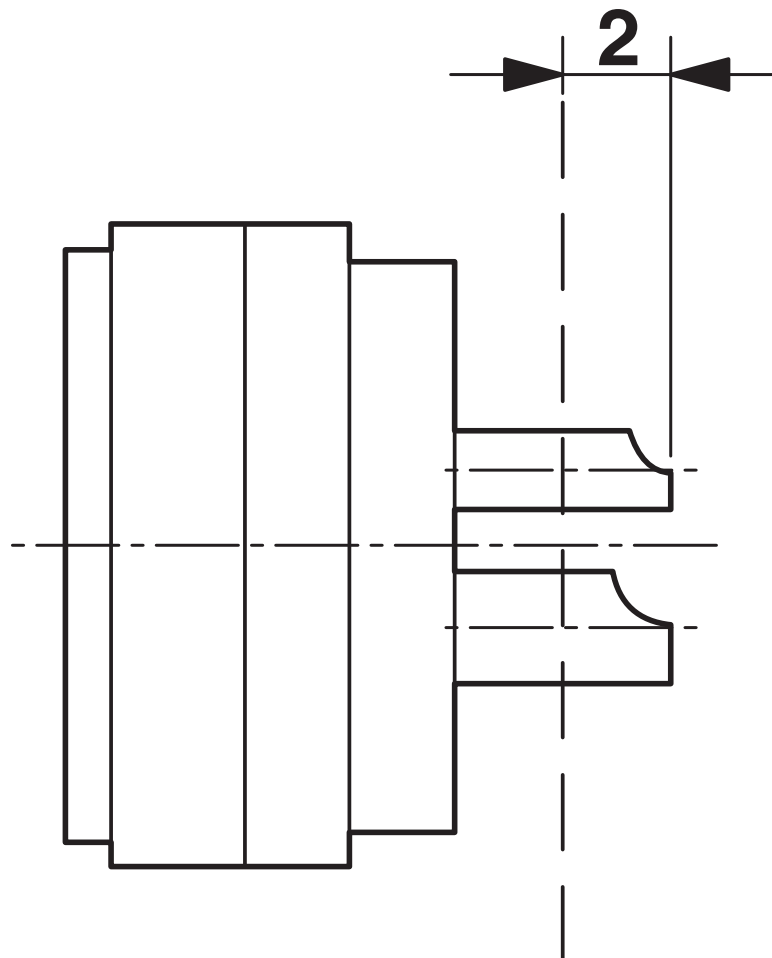
RC-19S1N120000 - Contact insert

1602749

<https://www.phoenixcontact.com/pc/products/1602749>



Schematic diagram



RC-19S1N120000 - Contact insert



1602749

<https://www.phoenixcontact.com/pc/products/1602749>

Classifications

ECLASS

ECLASS-9.0	27440205
ECLASS-10.0.1	27440205
ECLASS-11.0	27440223

ETIM

ETIM 8.0	EC003557
----------	----------

UNSPSC

UNSPSC 21.0	39121400
-------------	----------

RC-19S1N120000 - Contact insert



1602749

<https://www.phoenixcontact.com/pc/products/1602749>

Environmental Product Compliance

REACH SVHC	Lead 7439-92-1
China RoHS	Environmentally Friendly Use Period = 50 years
	For information on hazardous substances, refer to the manufacturer's declaration available under "Downloads"

Phoenix Contact 2023 © - all rights reserved

<https://www.phoenixcontact.com>

PHOENIX CONTACT GmbH & Co. KG

Flachsmarktstraße 8

D-32825 Blomberg

+49 (0) 5235-3 00

info@phoenixcontact.com