



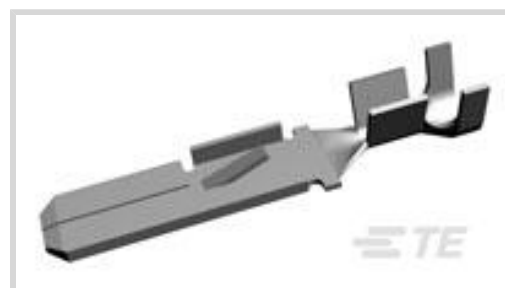
AMP

TE Internal #: 153301-2

Automotive Terminals, Tab, Mating Tab Width 5.16 mm [.203 in],
 Tab Thickness .85 mm [.035 in], 19 – 14 AWG Wire Size, .65 – 2.08
 mm² Wire Size

[View on TE.com >](#)

Terminals & Splices > Automotive Terminals



Terminal Type: **Tab**

Mating Tab Width: **5.16 mm [.203 in]**

Mating Tab Thickness: **.85 mm [.035 in]**

Wire Size: **.65 – 2.08 mm²**

Features

Product Type Features

Sealable	No
Primary Locking Feature	Locking Lance

Contact Features

Contact Size	5.16mm
Contact Fabrication	Stamped & Formed
Crimp Type	F-Crimp
Terminal Type	Tab
Mating Tab Width	5.16 mm[.203 in]
Mating Tab Thickness	.85 mm[.035 in]
Interface Plating	Tin (Sn)

Termination Features

Termination Method to Wire & Cable	Crimp
Product Terminates To	Wire

Dimensions

Wire Size	.65 – 2.08 mm ²
Tab Length	27.18 mm[1.07 in]

Usage Conditions

Insulation Option	Uninsulated
-------------------	-------------

Packaging Features

Packaging Quantity	3000
Packaging Method	Reel

Product Compliance

[For compliance documentation, visit the product page on TE.com>](#)

EU RoHS Directive 2011/65/EU	Compliant
EU ELV Directive 2000/53/EC	Compliant
China RoHS 2 Directive MIIT Order No 32, 2016	No Restricted Materials Above Threshold
EU REACH Regulation (EC) No. 1907/2006	Current ECHA Candidate List: JUNE 2023 (235) Candidate List Declared Against: JUNE 2023 (235) Does not contain REACH SVHC
Halogen Content	Low Halogen - Br, Cl, F, I < 900 ppm per homogenous material. Also BFR/CFR/PVC Free
Solder Process Capability	Not applicable for solder process capability

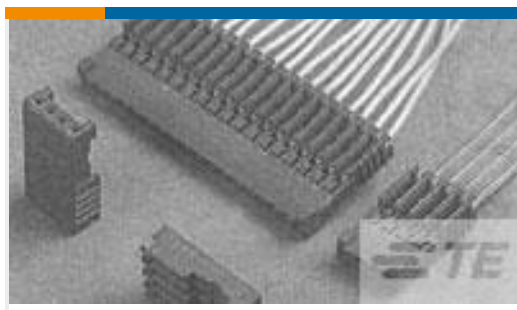
Product Compliance Disclaimer

This information is provided based on reasonable inquiry of our suppliers and represents our current actual knowledge based on the information they provided. This information is subject to change. The part numbers that TE has identified as EU RoHS compliant have a maximum concentration of 0.1% by weight in homogenous materials for lead, hexavalent chromium, mercury, PBB, PBDE, DBP, BBP, DEHP, DIBP, and 0.01% for cadmium, or qualify for an exemption to these limits as defined in the Annexes of Directive 2011/65/EU (RoHS2). Finished electrical and electronic equipment products will be CE marked as required by Directive 2011/65/EU. Components may not be CE marked. Additionally, the part numbers that TE has identified as EU ELV compliant have a maximum concentration of 0.1% by weight in homogenous materials for lead, hexavalent chromium, and mercury, and 0.01% for cadmium, or qualify for an exemption to these limits as defined in the Annexes of Directive 2000/53/EC (ELV). Regarding the REACH Regulation, the information TE provides on SVHC in articles for this part number is based on the latest European Chemicals Agency (ECHA) 'Guidance on requirements for substances in articles' posted at this URL: <https://echa.europa.eu/guidance-documents/guidance-on-reach>

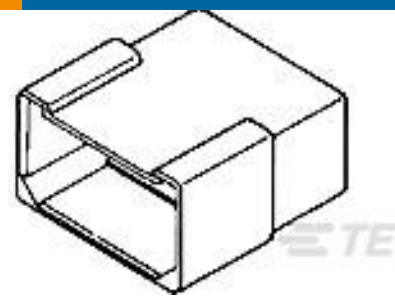
Compatible Parts



Customers Also Bought



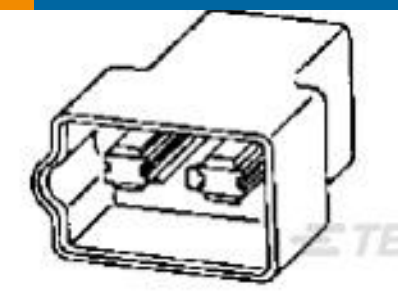
TE Part #281783-4
PLUG HE14 IDC 180 4 P AWG 26-24



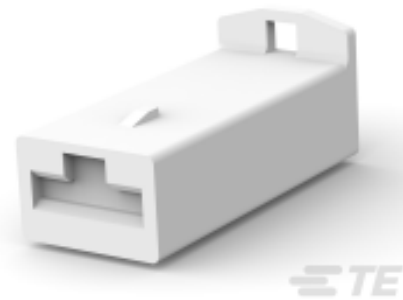
TE Part #180906
FF 250 TAB HSG 6P NYLON NAT



TE Part #626229
8 P FASTIN-ON HOUSING REC PA66
NAT



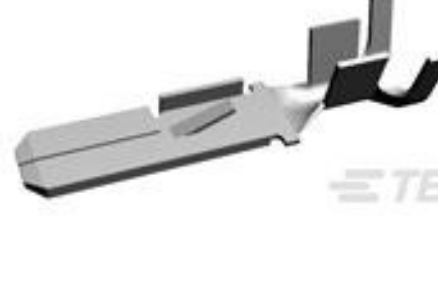
TE Part #626541-1
4 WAY FASTIN-ON HSG TAB
NATURAL PA.66



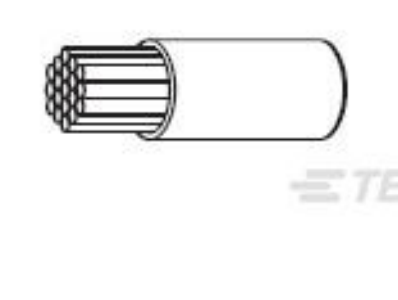
TE Part #880305
FF 250 HOUSING REC POLYAMIDE
6.6 NAT



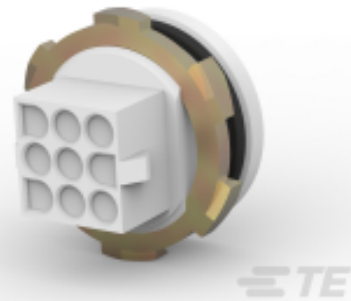
TE Part #880636-2
FF 250 TAB 1.0-2.5 MM2 0.39 X 13.2
TPBR



TE Part #153303-2
5.16 TAB



TE Part #7286093002
FLHTC0311-1.00-6



TE Part #1-1604254-1
UMNL BULKHEAD CONN,9 POS

TE Part #1989581-1
SPECIAL MICRO TIMER REC.

Documents

Product Drawings

5.16 TAB

English

CAD Files

Customer View Model

[ENG_CVM_153301-2_J.3d_igs.zip](#)

English

Customer View Model

[ENG_CVM_153301-2_J.3d_stp.zip](#)

English

Customer View Model

[ENG_CVM_153301-2_J.2d_dxf.zip](#)

English

3D PDF

English

By downloading the CAD file I accept and agree to the [Terms and Conditions](#) of use.