

**PLEASE CHECK WWW.MOLEX.COM FOR LATEST PART INFORMATION**

**Part Number:** [1501761020](#)  
**Status:** **Active**  
**Overview:** [EconoLatch Wire-to-Wire Interconnects](#)  
**Description:** [EconoLatch Plug Housing, Single Row, with Panel Mount Latch, 2 Circuits](#)

**Documents:**

|   |   |
|---|---|
| <a href="#">3D Model</a>  | <a href="#">Packaging Specification PK-150176-001-001 (PDF)</a> |
| <a href="#">Drawing (PDF)</a>                                     | <a href="#">Test Summary 1501760001-TS-000 (PDF)</a>            |
| <a href="#">Product Specification 1501760001-PS-000 (PDF)</a>     | <a href="#">RoHS Certificate of Compliance (PDF)</a>            |
| <a href="#">Application Specification 1501760001-AS-000 (PDF)</a> | <a href="#">Product Literature (PDF)</a>                        |

**Agency Certification**

UL E29179

**General**

|                             |   |
|-----------------------------|---|
| Product Family              | Crimp Housings  |
| Series                      | <a href="#">150176</a>                                |
| Application                 | Power, Wire-to-Wire                                   |
| Overview                    | <a href="#">EconoLatch Wire-to-Wire Interconnects</a> |
| Product Literature Order No | 987651-5541   |
| Product Name                | EconoLatch  |
| UPC                         | 889056490252  |

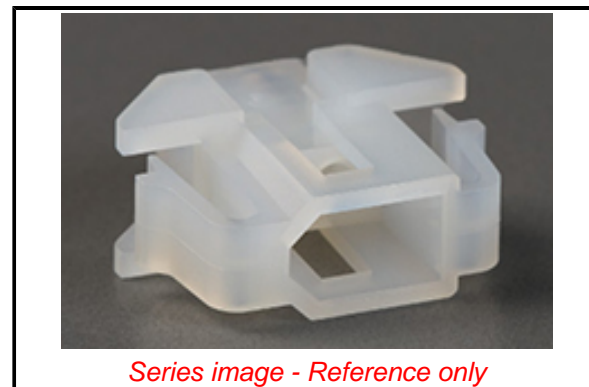
**Physical**

|                               |                |
|-------------------------------|----------------|
| Circuits (maximum)            | 2              |
| Color - Resin                 | Natural        |
| Flammability                  | 94V-2          |
| Gender                        | Plug           |
| Glow-Wire Capable             | No             |
| Keying to Mating Part         | None           |
| Lock to Mating Part           | Yes            |
| Material - Resin              | Nylon          |
| Net Weight                    | 1.242/g        |
| Number of Rows                | 1              |
| Packaging Type                | Bag            |
| Panel Mount                   | Yes            |
| Pitch - Mating Interface      | 3.68mm         |
| Pitch - Termination Interface | 3.68mm         |
| Polarized to Mating Part      | Yes            |
| Stackable                     | No             |
| Temperature Range - Operating | -40° to +105°C |

**Material Info**

**Reference - Drawing Numbers**

|                           |                   |
|---------------------------|-------------------|
| Application Specification | 1501760001-AS-000 |
| Packaging Specification   | PK-150176-001-001 |
| Product Specification     | 1501760001-PS-000 |
| Sales Drawing             | SD-150176-001-000 |
| Test Summary              | 1501760001-TS-000 |



*Series image - Reference only*

**EU ELV**

**Compliant**

**EU RoHS**

**Compliant**

**REACH SVHC**

Not Contained Per -  
ED/71/2019 (16 July  
2019)

**Halogen-Free**

**Status**

**Low-Halogen**

For more information, please visit [Contact US](#)

China ROHS

ELV

RoHS Phthalates

**China RoHS**

Green Image

Compliant

Not Contained

**Search Parts in this Series**

[150176 Series](#)

**Mates With**

EconoLatch Receptacle Housing [150178](#)

**Use With**

EconoLatch Male Terminal [150180](#)