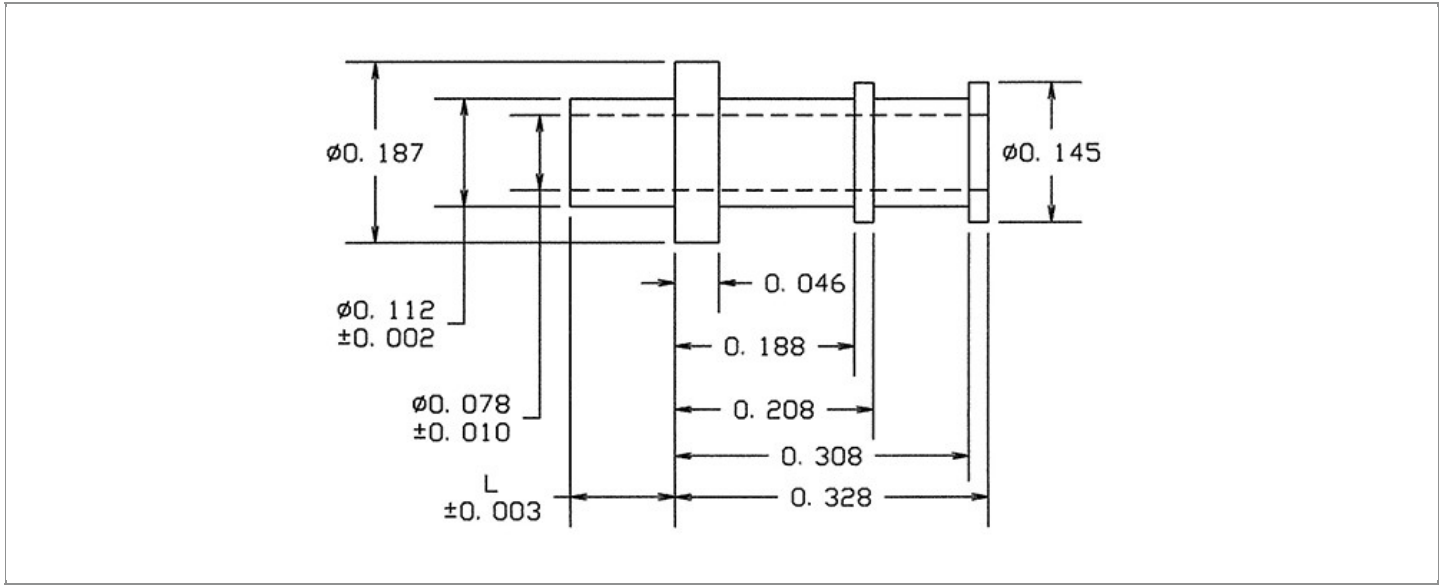


<b>DRAWING NUMBER:</b>	<b>15-349-X-XX</b>
<b>PRODUCT GROUP:</b>	TERMINALS
<b>SUB-GROUP:</b>	MILITARY NON-INSULATED TERMINALS
<b>DESCRIPTION:</b>	NON-INSULATED THRU-HOLE DOUBLE TURRET TERMINAL



BOARD / PANEL MOUNTING METHOD	MOUNTING HOLE SIZE	DRILL SIZE	FEED THRU COMBINATION
SWAGE MOUNT	0.116" ± 0.001	#32	N/A

**PART NO. STRUCTURE:**

15-349 - X - XX  
 PART SERIES    DIMENSION    FINISH

**MATERIAL OPTIONS:**

15-349-X-XX

COMPONENT	MATERIAL	MATERIAL AND SPECIFICATION
TERMINAL	BRASS	BRASS PER ASTM B16, ALLOY C36000, 1/2 HARD

**DIMENSION OPTIONS:**

15-349-X-XX

DIMENSION	K	OVERALL LENGTH	SHANK LENGTH (L)	BOARD/PANEL THICKNESS
2	N/A	0.437"	0.109"	1/16"
3	N/A	0.469"	0.141"	3/32"
4	N/A	0.500"	0.172"	1/8"

FINISH - PLATING OPTIONS:

15-349-X-**XX**

FINISH CODE	COMPONENT	FINISH	FINISH AND SPECIFICATION
05	TERMINAL	ELECTRO-SOLDER	0.000300"MIN. ELECTRO-SOLDER PER SAE-AMS-P-81728 OVER 0.000100"MIN. COPPER PER SAE-AMS-2418
088	TERMINAL	BRIGHT TIN-LEAD	0.000300"MIN. BRIGHT TIN-LEAD (Sn93%-Pb7%) PER ASTM B545 OVER 0.000100"MIN. COPPER PER SAE-AMS-2418
095	TERMINAL	HOT SOLDER DIP	0.000100"MIN. HOT SOLDER DIP USING Sn60 PER IPC-J-STD-006 OVER 0.000100"MIN. COPPER PER SAE-AMS-2418

TOLERANCES:\*

DECIMAL	FRACTIONAL	ANGULAR	DRAWING ORIGATION DATE	LAST MODIFICATION DATE
± 0.005	N/A	N/A	8/22/1997	3/1/2017

\*All dimensions are in inches.

RoHS COMPLIANCE:

15-349-2-XX

PART NUMBER	RoHS COMPLIANT
15-349-2-05	NO
15-349-2-088	NO
15-349-2-095	NO

15-349-3-XX

PART NUMBER	RoHS COMPLIANT
15-349-3-05	NO
15-349-3-088	NO
15-349-3-095	NO

15-349-4-XX

PART NUMBER	RoHS COMPLIANT
15-349-4-05	NO
15-349-4-088	NO
15-349-4-095	NO

MILITARY REFERENCE SPECIFICATIONS:

15-349-2-XX

PART NUMBER	MIL SPECIFICATION	MIL PART NUMBER	COMMERCIAL ITEM DESCRIPTION (CID) SPECIFICATION	CID PART NUMBER
15-349-2-05	MIL-T-55155/17	M55155/17XH01	A-A-59126/17	AA59126/17XH01
15-349-2-088	MIL-T-55155/17	M55155/17XJ01	A-A-59126/17	AA59126/17XJ01
15-349-2-095	MIL-T-55155/17	M55155/17XI01	A-A-59126/17	AA59126/17XI01

15-349-3-XX

PART NUMBER	MIL SPECIFICATION	MIL PART NUMBER	COMMERCIAL ITEM DESCRIPTION (CID) SPECIFICATION	CID PART NUMBER
15-349-3-05	MIL-T-55155/17	M55155/17XH02	A-A-59126/17	AA59126/17XH02
15-349-3-088	MIL-T-55155/17	M55155/17XJ02	A-A-59126/17	AA59126/17XJ02
15-349-3-095	MIL-T-55155/17	M55155/17XI02	A-A-59126/17	AA59126/17XI02

Continued on next page...

MILITARY REFERENCE SPECIFICATIONS CONTINUED:

15-349-4-XX

PART NUMBER	MIL SPECIFICATION	MIL PART NUMBER	COMMERCIAL ITEM DESCRIPTION (CID) SPECIFICATION	CID PART NUMBER
15-349-4-05	MIL-T-55155/17	M55155/17XH03	A-A-59126/17	AA59126/17XH03
15-349-4-088	MIL-T-55155/17	M55155/17XJ03	A-A-59126/17	AA59126/17XJ03
15-349-4-095	MIL-T-55155/17	M55155/17XI03	A-A-59126/17	AA59126/17XI03

TOOLING:

INSTALLATION TOOL: ARBOR PRESS	INSTALLATION TOOL: ANVIL (ARBOR PRESS OPERATED)	INSTALLATION TOOL: PRESS-FIT / ROLL SWAGE / RIVET PUNCH (ARBOR PRESS OPERATED)	INSTALLATION TOOL: FLARE SWAGE PUNCH (ARBOR PRESS OPERATED)
TM1	TA188-146-31	TP112-78	TFLP90-200

NOTES:

<b>DATASHEET NOTES</b>
------------------------

N/A

<b>INSTRUCTION NOTES</b>
--------------------------

SEE GENERAL SWAGING INSTALLATION INSTRUCTION ON CONCORD ELECTRONICS' WEBSITE [WWW.CONCORD-ELECTRONICS.COM](http://WWW.CONCORD-ELECTRONICS.COM)