

PLEASE CHECK WWW.MOLEX.COM FOR LATEST PART INFORMATION

Part Number: [15-06-0245](#)
Status: **Active**
Overview: Mini-Fit® BMI
Description: 4.20mm Pitch Mini-Fit® BMI Plug Housing, Dual Row with Panel Mount Ears, PA Polyamide Nylon 6/6, UL 94V-2, 24 Circuits

Documents:

3D Model	Packaging Specification PK-42474-001 (PDF)
Drawing (PDF)	Test Summary TS-5556-002 (PDF)
Product Specification PS-5556-002 (PDF)	RoHS Certificate of Compliance (PDF)

Agency Certification

CSA	LR19980
UL	E29179

General

Product Family	Crimp Housings
Series	42475
Application	Power, Wire-to-Board, Wire-to-Wire
Comments	Current = 13A max. per circuit when header is mated to a receptacle loaded with 45750 series terminals crimped to 16 AWG wire. . See Molex product specification PS-45750-001 for additional current derating information.
Overview	Mini-Fit® BMI
Product Name	Mini-Fit® BMI
UPC	800755672725

Physical

Circuits (maximum)	24
Color - Resin	Natural
Flammability	94V-2
Gender	Male
Glow-Wire Compliant	No
Lock to Mating Part	Yes
Material - Resin	Nylon
Net Weight	8.360/g
Number of Rows	2
Packaging Type	Bag
Panel Mount	Yes
Pitch - Mating Interface	4.20mm
Pitch - Termination Interface	4.20mm
Polarized to Mating Part	Yes
Stackable	No
Temperature Range - Operating	-40°C to +105°C

Electrical

Current - Maximum per Contact	13A
-------------------------------	-----

Material Info

Old Part Number	42475-2411
-----------------	------------

Reference - Drawing Numbers

Packaging Specification	PK-42474-001
Product Specification	PS-5556-002, RPS-42385-001, RPS-42474-001, RPS-42475-001
Sales Drawing	SD-42475-***1

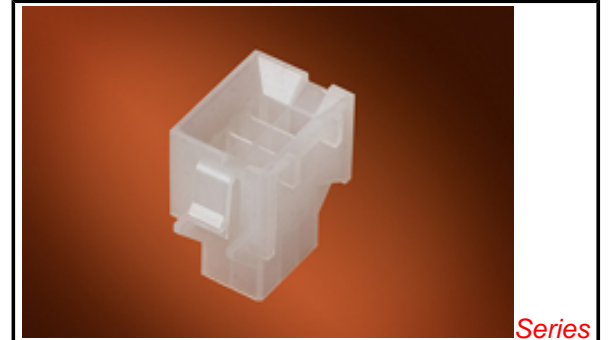


image - Reference only

Series

EU RoHS

ELV and RoHS Compliant
REACH SVHC Contains SVHC: No
Low-Halogen Status
Low-Halogen

China RoHS



Need more information on product environmental compliance?

Email productcompliance@molex.com
 For a multiple part number RoHS Certificate of Compliance, [click here](#)

Please visit the [Contact Us](#) section for any non-product compliance questions.

Search Parts in this Series

[42475Series](#)

Mates With

[15060240](#) Mini-Fit BMI Panel Mount Receptacle, [42385](#) Mini-Fit BMI 24 Circuit, UL 94V-2 Vertical Receptacle Headers, [444752411](#) Mini-Fit BMI HCS Vertical Receptacle Header, [39012240](#) Mini-Fit Jr. Receptacle, [445160009](#) Mini-Fit BMI SI

Use With

[46012](#) Mini-Fit® Plus HCS Crimp Terminal, [5558](#) Mini-Fit® Crimp Terminal

This document was generated on 01/14/2013

PLEASE CHECK WWW.MOLEX.COM FOR LATEST PART INFORMATION