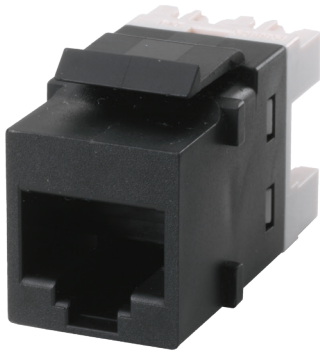
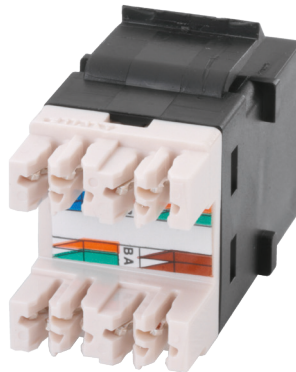


KL & KLS Series Connectors

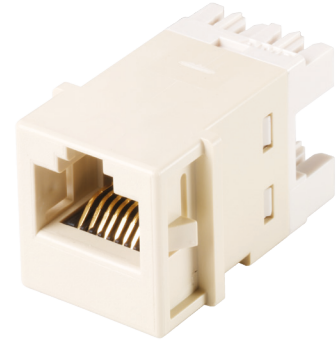
Category 5e & 6 Modular Jacks



KL Series: Front View



KL Series: Back View



KLS Series

KL & KLS Series Category 5e & 6 Modular Jacks

TE Connectivity KL & KLS Series Category 5e & 6 110Connect Modular Jacks have a slim profile and are compatible with many “non-AMP NETCONNECT” style faceplates. Universal wiring labels permit termination to either T568A or T568B wiring patterns. Cables may be dressed at either 180° (rear) or 90° (either side) for added flexibility. Patented bend-limiting strain relief may also be used to reduce stress on cable at point of termination and is included with each unshielded modular jack. Jacks can be terminated with either an SL series modular jack termination tool 1725150-1 or a standard 110 punch-down tool.

TE Connectivity KL & KLS Series Category 5e & 6 110Connect Modular Jacks meet or exceed ANSI/TIA-568-C.2 and ISO/IEC 11801 requirements for Enhanced Category 5/Class D and 6/Class E component performance. The AMP NETCONNECT Enhanced Category 5/6 System complies with all of the performance requirements for current and proposed applications such as Gigabit Ethernet (1000BASE-TX), 10 and 100BASE-Tx, token ring, 155 Mbps ATM, 100 Mbps TP-PMD, ISDN, analog and digital video, and analog and digital voice (VoIP).

KL & KLS Series Connectors

Category 5e & 6 Modular Jacks

KL Series Category 5e/6 Modular Jack

Compatible with faceplates and discrete panels from ADC-TrueNet, Leviton, Hubbell, Panduit Netkey and other “keystone” style (IEC 603-7 variant panel cutout) openings.

Product Description	Part Number
KL Series Category 6 110Connect Modular Jacks	1499631-X
KL Series Category 5e 110Connect Modular Jacks	1499632-X



X Denotes Color: -1=Almond, -2=Black, -3=White, -4=Gray, -5=Orange, -6=Blue, -7=Red, -8=Yellow, -9=Green, 1- - 0=Violet, 1--1=Electrical Ivory, 1--3 Alpine White.

KLS Series Category 5e/6 Modular Jack

Compatible with CommScope SYSTIMAX M-Series faceplates.

Product Description	Part Number
KLS Series Category 6 110Connect Modular Jacks	1499682-Y
KLS Series Category 5e 110Connect Modular Jacks	1499683-Y



Y Denotes Color: -1=Almond, -2=Black, -3=White, -6=Blue, -8=Yellow, -9=Green, 1- -1=Electrical Ivory.

For a more detailed information cut sheet on TE Connectivity KL & KLS Series category 5e/6 Modular Jacks, please visit our web site or contact your local representative.

DATA SHEET



Contact us:

Greensboro, NC
USA 27409-8420
Tel: 1-800-553-0938
Fax: 1-717-986-7406

www.te.com/EnterpriseNetworks

TE Connectivity, TE connectivity (logo), Tyco Electronics, and TE (logo) are trademarks of the TE Connectivity Ltd. family of companies and its licensors. SYSTIMAX and all other logos, products and/or company names referred to herein might be trademarks of their respective owners.

The information given herein, including drawings, illustrations and schematics which are intended for illustration purposes only, is believed to be reliable. However, TE Connectivity makes no warranties as to its accuracy or completeness and disclaims any liability in connection with its use. TE Connectivity's obligations shall only be as set forth in TE Connectivity's Standard Terms and Conditions of Sale for this product and in no case will TE Connectivity be liable for any incidental, indirect or consequential damages arising out of the sale, resale, use or misuse of the product. Users of TE Connectivity products should make their own evaluation to determine the suitability of each such product for the specific application.

Tyco Electronics Corporation, a TE Connectivity Ltd. Company. All Rights Reserved.
317718AE 9/13 Original © 2013