

**KP-M10/-240****Weidmüller Interface GmbH & Co. KG**

Klingenbergstraße 26

D-32758 Detmold

Germany

www.weidmueller.com

**The use of insulated connectors guarantees users consistent electrical connection quality in the long term.**

- Wide range of insulated and non-insulated cable lugs and connectors
- Tubular cable lugs according to current market standards (Euroseries)
- Compression cable lugs acc. to DIN 46235
- Sheet metal cable lugs acc. to DIN 46234
- Insulated ring cable lugs to DIN 46237
- Insulated pin cable lugs to DIN 46231

**General ordering data**

Version	cable lug, terminal end,240 mm <sup>2</sup>
Order No.	<a href="#">1498390000</a>
Type	KP-M10/-240
GTIN (EAN)	4050118307818
Qty.	20 pc(s).

Creation date March 12, 2024 12:56:17 PM CET

Catalogue status 09.03.2024 / We reserve the right to make technical changes.

## KP-M10/-240

Weidmüller Interface GmbH &amp; Co. KG

Klingenbergstraße 26

D-32758 Detmold

Germany

www.weidmueller.com

## Technical data

## Dimensions and weights

Net weight	271.04 g
------------	----------

## Technical data

Version	DIN series 46235, standard
---------	-------------------------------

## Connectors

Conductor cross-section	240 mm <sup>2</sup>	Connection length (l)	92 mm
Flange width (b)	42 mm	Hole	M10
Identification number Cu	28 K	Inside diameter of flange (d2)	10.5 mm
Inside diameter of shaft (d1)	21.5 mm	Insulation	not available
Outside diameter of shaft (d3)	29 mm	Shaft length (a)	40 mm

## Classifications

ETIM 6.0	EC001050	ETIM 7.0	EC001050
ETIM 8.0	EC001050	ETIM 9.0	EC001050
ECLASS 9.0	27-40-02-03	ECLASS 9.1	27-40-02-03
ECLASS 10.0	27-40-02-03	ECLASS 11.0	27-40-02-03
ECLASS 12.0	27-40-02-03	ECLASS 13.0	27-40-02-03

## Approvals

ROHS	Conform
------	---------

## Downloads

Catalogues	<a href="#">Catalogues in PDF-format</a>
Brochures	

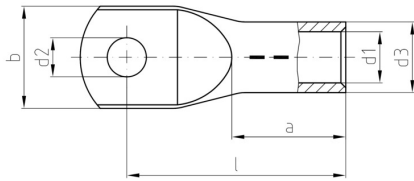
**Data sheet**

**KP-M10/-240**

**Weidmüller Interface GmbH & Co. KG**  
Klingenbergstraße 26  
D-32758 Detmold  
Germany

[www.weidmueller.com](http://www.weidmueller.com)

**Drawings**



## KP-M10/-240

**Weidmüller Interface GmbH & Co. KG**  
Klingenbergstraße 26  
D-32758 Detmold  
Germany

www.weidmueller.com

## Accessories

## Tools



### Crimping tools for cable lugs, connectors and wire-end ferrules with interchangeable inserts

- extremely fast processing thanks to hydraulic support
- large processing range up to 400 mm<sup>2</sup>
- 360° revolving quick action crimping head
- automatic pressure limitation and monitoring via pressure sensor
- Additional features for APG series:
- electronic control and monitoring of the crimping process
- Saving of all crimping cycles and error messages to internal memory
- Reading of all cycles and error messages via USB

## General ordering data

Type	HPG 60	Version
Order No.	<a href="#">2453820000</a>	6mm <sup>2</sup> , 300mm <sup>2</sup> , Hexagonal crimp, WM crimp, Indent crimp,
GTIN (EAN)	4050118468427	Trapezoidal crimp, Oval crimping
Qty.	1 pc(s).	
Type	APG 80	Version
Order No.	<a href="#">1502390000</a>	6mm <sup>2</sup> , 400mm <sup>2</sup>
GTIN (EAN)	4050118310627	
Qty.	1 pc(s).	

## ... for compression cable lugs (acc. to DIN 46235)



### Crimping tools for cable lugs, connectors and wire-end ferrules with interchangeable inserts

- extremely fast processing thanks to hydraulic support
- large processing range up to 400 mm<sup>2</sup>
- 360° revolving quick action crimping head
- automatic pressure limitation and monitoring via pressure sensor
- Additional features for APG series:
- electronic control and monitoring of the crimping process
- Saving of all crimping cycles and error messages to internal memory
- Reading of all cycles and error messages via USB

## General ordering data

Type	ES APG 80 HEX 240	Version
Order No.	<a href="#">1502740000</a>	Hexagonal crimp
GTIN (EAN)	4050118310481	
Qty.	1 pc(s).	

## KP-M10/-240

**Weidmüller Interface GmbH & Co. KG**  
 Klingenbergstraße 26  
 D-32758 Detmold  
 Germany

www.weidmueller.com

# Accessories

### ... for tubular cable lugs (acc. to EN 13600)



#### Crimping tools for cable lugs, connectors and wire-end ferrules with interchangeable inserts

- extremely fast processing thanks to hydraulic support
- large processing range up to 400 mm<sup>2</sup>
- 360° revolving quick action crimping head
- automatic pressure limitation and monitoring via pressure sensor
- Additional features for APG series:
- electronic control and monitoring of the crimping process
- Saving of all crimping cycles and error messages to internal memory
- Reading of all cycles and error messages via USB

#### General ordering data

Type	ES APG 80 WM 240	Version	
Order No.	<a href="#">1502580000</a>		240mm <sup>2</sup> , WM crimp
GTIN (EAN)	4050118310689		
Qty.	1 pc(s).		

### ... for tubular cable lugs



#### Crimping tools for cable lugs, connectors and wire-end ferrules with interchangeable inserts

- extremely fast processing thanks to hydraulic support
- large processing range up to 300 mm<sup>2</sup>
- 270° revolving quick-action crimping head
- automatic pressure limitation and monitoring via pressure sensor
- electronic control and monitoring of the crimping process
- Saving of all crimping cycles and error messages to internal memory
- Reading of all cycles and error messages via USB
- Li-ion rechargeable battery with charge status indicator: 18 V, 1.5 Ah

#### General ordering data

Type	ES EPG/HPG 60 WM 240	Version	
Order No.	<a href="#">2469640000</a>		Crimping tool insert, WM crimp
GTIN (EAN)	4050118484052		
Qty.	1 pc(s).		

## KP-M10/-240

**Weidmüller Interface GmbH & Co. KG**  
Klingenbergstraße 26  
D-32758 Detmold  
Germany

www.weidmueller.com

## Accessories

### ... for compression cable lugs



#### **Crimping tools for cable lugs, connectors and wire-end ferrules with interchangeable inserts**

- extremely fast processing thanks to hydraulic support
- large processing range up to 300 mm<sup>2</sup>
- 270° revolving quick-action crimping head
- automatic pressure limitation and monitoring via pressure sensor
- electronic control and monitoring of the crimping process
- Saving of all crimping cycles and error messages to internal memory
- Reading of all cycles and error messages via USB
- Li-ion rechargeable battery with charge status indicator: 18 V, 1.5 Ah

#### General ordering data

Type	ES EPG/HPG 60 HEX 240	Version	
Order No.	<a href="#">2505260000</a>		Crimping tool insert, Hexagonal crimp
GTIN (EAN)	4050118519648		
Qty.	1 pc(s).		

### Tools



#### **Crimping tools for cable lugs, connectors and wire-end ferrules with interchangeable inserts**

- extremely fast processing thanks to hydraulic support
- large processing range up to 300 mm<sup>2</sup>
- 270° revolving quick-action crimping head
- automatic pressure limitation and monitoring via pressure sensor
- electronic control and monitoring of the crimping process
- Saving of all crimping cycles and error messages to internal memory
- Reading of all cycles and error messages via USB
- Li-ion rechargeable battery with charge status indicator: 18 V, 1.5 Ah

#### General ordering data

Type	EPG 60	Version	
Order No.	<a href="#">2453810000</a>		Pressing tools, Tools, Pressing tool, 6mm <sup>2</sup> , 300mm <sup>2</sup> , Hexagonal crimp,
GTIN (EAN)	4050118468434		WM crimp, Indent crimp, Trapezoidal crimp, Oval crimping
Qty.	1 pc(s).		