

D C B A

4

3

2

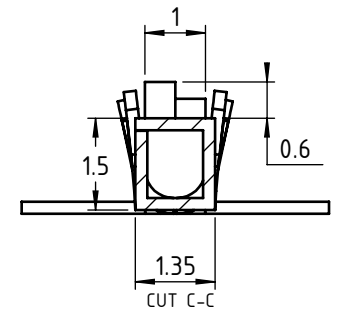
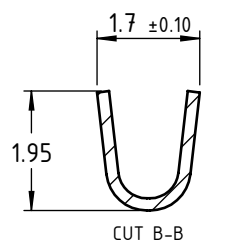
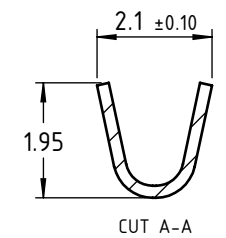
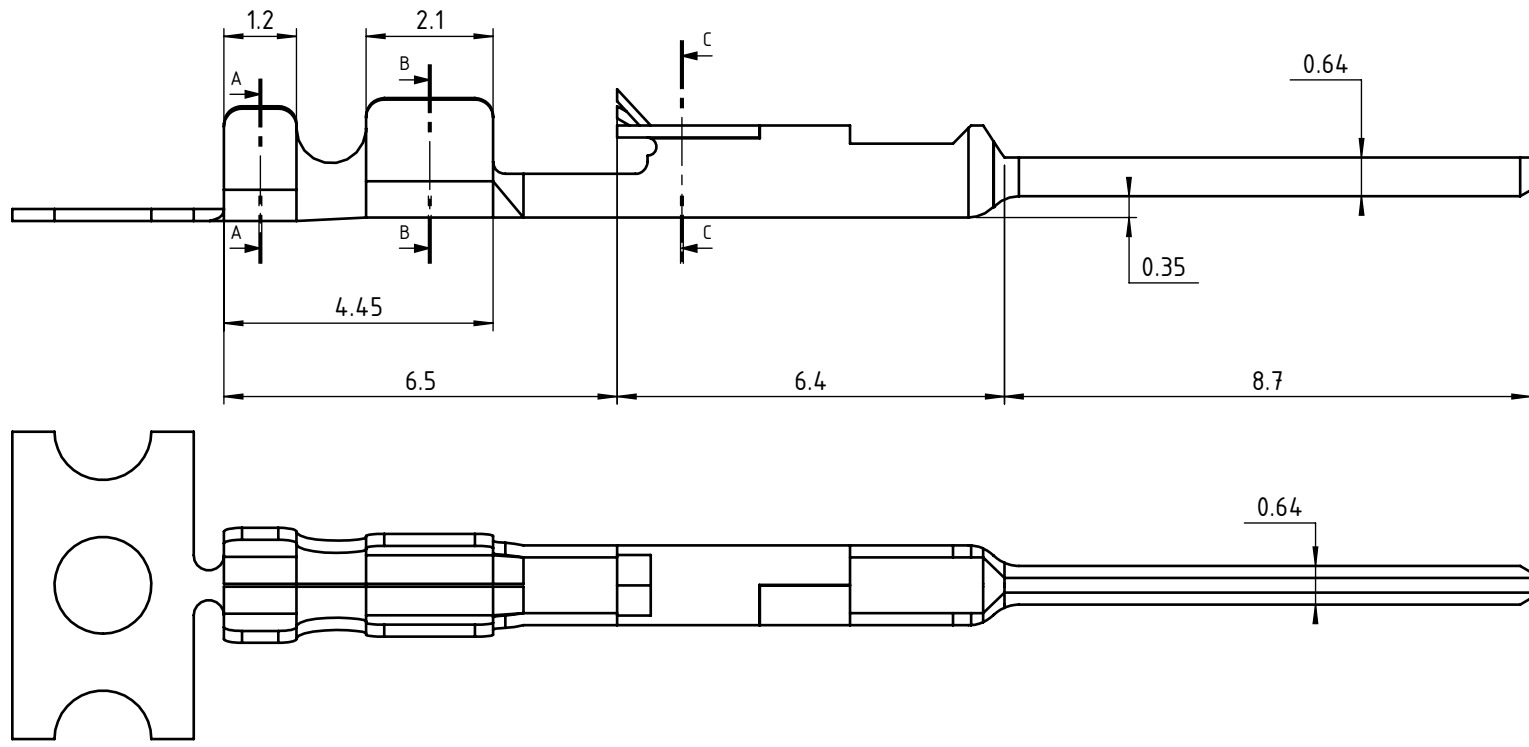
1

4

3

2

1



MATERIAL

Phosphor bronze (M and F contacts)

PLATING

The standard contact is Tin plated over preplating nickel plated (gold plated possible)

ELECTRICAL SPECIFICATION

Insulation resistance: 1 000 mOhm min
 Withstanding voltage: 1 000 V AC
 Rated voltage: 250V AC DC
 Rated courant : 3A permanent

THERMAL SPECIFICATIONS

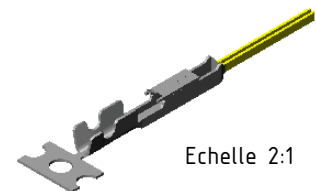
Temperature range: -40°C to +105°C

OTHERS

Contacts for AWG 22 to 28

*** Packaging**

- Reel of 15 000 pieces code X = 2
- higgledy-piggledy Code X = 0



Echelle 2:1

 www.nicomatic.com Mail : nicomatic@nicomatic.fr Tel : +33 (0)4.50.36.13.85	2	29/03/12	A.D.	D.E.	A.V.
	Iss	Date	Drawn	Checked	Approved
Item : Male contact					
Folder : X:\Méthodes\Plans clients\Plans clients 2D\31 - Connecteurs et dérivés HE13-HE14\02-Contacts\Mâle\14671-1X_cl					

This document and drawings, sketches, and schematic drawings are the property of the NICOMATIC company, and no parts thereof may be reproduced and used without the written consent of the owner. Law dated 11.03.1902

Catalogue Reference : 14671-1X_cl

	General tolerance ±0.2	Scale 8:1	Page 1/1
--	------------------------	-----------	----------

D C B A A4