

## Flush-type connector - SACC-DSI-M 8MS-6CON-L180 SH - 1456022

Please be informed that the data shown in this PDF Document is generated from our Online Catalog. Please find the complete data in the user's documentation. Our General Terms of Use for Downloads are valid (<http://phoenixcontact.com/download>)



Sensor/actuator flush-type connector, connector, 6-pos. M8, rear/screw mounting with M8 fastening thread, with straight solder connection



### Key Commercial Data

Packing unit	1 pc
Minimum order quantity	20 pc
Weight per Piece (excluding packing)	6.0 g
Custom tariff number	85366990
Country of origin	Germany

### Technical data

#### Ambient conditions

Ambient temperature (operation)	-25 °C ... 85 °C
Degree of protection	IP67

#### General

Rated current at 40°C	2 A
Rated voltage	30 V AC
	30 V DC
Number of positions	6
Contact resistance	≤ 3 mΩ
Insulation resistance	≥ 100 MΩ
Coding	A - standard
Standards/regulations	M8 connector IEC 61076-2-104
Status display	No
Overvoltage category	II
Pollution degree	3

# Flush-type connector - SACC-DSI-M 8MS-6CON-L180 SH - 1456022

## Technical data

### General

Connection method	Solder pins
Mounting type	Rear mounting M8 x 1 With flat nut

### Material

Flammability rating according to UL 94	HB
Contact material	Cu alloy
Contact surface material	Au
Contact carrier material	PA 66
Material, knurls	Zinc die-cast, nickel-plated
Sealing material	NBR

### Cable

Ambient temperature (operation)	-25 °C ... 85 °C
---------------------------------	------------------

## Classifications

### eCl@ss

eCl@ss 4.0	27250313
eCl@ss 4.1	27250313
eCl@ss 5.0	27143423
eCl@ss 5.1	27143423
eCl@ss 6.0	27143423
eCl@ss 7.0	27449001
eCl@ss 8.0	27440103

### ETIM

ETIM 4.0	EC002061
ETIM 5.0	EC002061

### UNSPSC

UNSPSC 6.01	31251501
UNSPSC 7.0901	31251501
UNSPSC 11	31251501
UNSPSC 12.01	31251501
UNSPSC 13.2	31251501

## Approvals

### Approvals

# Flush-type connector - SACC-DSI-M 8MS-6CON-L180 SH - 1456022

## Approvals

Approvals

EAC

---

Ex Approvals

---

Approvals submitted

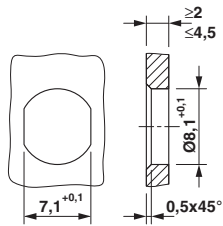
---

## Approval details

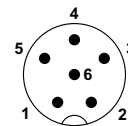
EAC
-----

## Drawings

Dimensional drawing



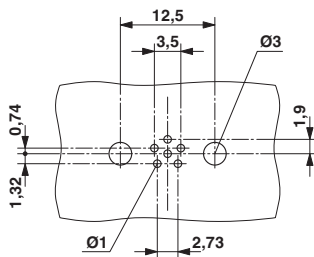
Schematic diagram



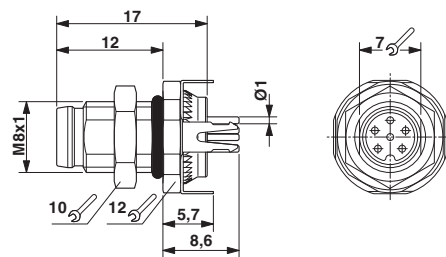
Pin assignment M8 plug, 6-pos., view male side

Mounting panel with feed-through hole

Drilling diagram



Dimensional drawing



Drilling diagram

M8 flush-type plug