

PLEASE CHECK WWW.MOLEX.COM FOR LATEST PART INFORMATION

Part Number: [14-56-2207](#)
Status: **Active**
Overview: C-Grid® Products
Description: 2.54mm Pitch SL™ Insulation Displacement Connector Assembly, Female, Single Row, Version A, Non-polarized, Wire Size 24 AWG, 0.76µm Gold (Au), 20 Circuits

Documents:

[3D Model](#) [Product Specification PS-70400 \(PDF\)](#)
[Drawing \(PDF\)](#) [RoHS Certificate of Compliance \(PDF\)](#)

Agency Certification

CSA LR19980
 UL E29179

General

Product Family Ribbon Cable / Wire Trap Connectors
 Series [70400](#)
 Comments Terminals Preloaded
 Component Type Housing
 Glow-Wire Compliant No
 Overview [C-Grid® Products](#)
 Product Name SL™
 UPC 800753761216

Physical

Circuits (Loaded) 20
 Color - Resin Black
 Durability (mating cycles max) 50
 Entry Angle Vertical
 Flammability 94V-0
 Lock to Mating Part None
 Material - Metal Phosphor Bronze
 Material - Plating Mating Gold
 Material - Plating Termination Tin
 Material - Resin Polyester Alloy
 Number of Rows 1
 PCB Retention None
 Packaging Type Tube
 Pitch - Mating Interface 2.54mm
 Plating min - Mating 0.762µm
 Plating min - Termination 1.905µm
 Polarized to Mating Part No
 Stackable Yes
 Surface Mount Compatible (SMC) N/A
 Temperature Range - Operating -40°C to +105°C
 Termination Interface: Style IDT or Pierce
 Wire Insulation Diameter 1.35mm max.
 Wire Size AWG 24
 Wire/Cable Type Discrete Wire, Ribbon Cable

Electrical

Current - Maximum per Contact 3A
 Voltage - Maximum 250V

Material Info

Old Part Number 70400-1069

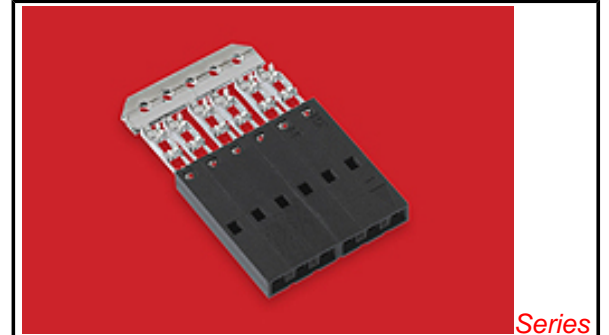


image - Reference only

Series

EU RoHS

ELV and RoHS Compliant

REACH SVHC Not Reviewed

Low-Halogen Status Not Reviewed

China RoHS



Need more information on product environmental compliance?

Email productcompliance@molex.com
 For a multiple part number RoHS Certificate of Compliance, [click here](#)

Please visit the [Contact Us](#) section for any non-product compliance questions.

Search Parts in this Series

[70400Series](#)

Mates With

Single Row headers and housings, [8624](#) , [70203](#) , [42375](#) , [42377](#)

Use With

[7307](#) Tinned 28AWG, [7767](#) Topcoat 28AWG, [24241](#) Tinned 26AWG, [8996](#) Topcoat 26AWG, [24226](#) Tinned 24AWG, [8997](#) Topcoat 24AWG, [24369](#) High Flex 26AWG, [24389](#) High Flex 24AWG

Application Tooling | FAQ

Tooling specifications and manuals are found by selecting the products below. Crimp Height Specifications are then contained in the Application Tooling Specification document.

Global

Description	Product #
Ribbon Cable Tool Kit, Press Not Included	0622016600

Reference - Drawing Numbers

Product Specification
Sales Drawing

PS-70400
SDA-70400-1051-1074

Hawk™ Ribbon Cable Terminator without Break-off	<u>0623003000</u>
Hawk™ Ribbon Cable Terminator with Break-off	<u>0623005300</u>
IDT - Semi-automatic - Bench-Top Terminator	<u>0011200949</u>
Hawk™ Semi- Automatic Discrete Wire Terminator	<u>0623003100</u>
Hawk™ Semi- Automatic Discrete Wire Terminator for Rebuilt CE Approved*	<u>0623004900</u>
Hawk™ Flat Flex Cable Terminator with Break-off	<u>0623005200</u>
IDT Discrete Handtool Module	<u>0621000700</u>

This document was generated on 06/27/2013

PLEASE CHECK WWW.MOLEX.COM FOR LATEST PART INFORMATION