

**PLEASE CHECK WWW.MOLEX.COM FOR LATEST PART INFORMATION**

**Part Number:** **14-56-2125**  
**Status:** **Active**  
**Overview:** C-Grid® Products  
**Description:** 2.54mm Pitch SL™ Insulation Displacement Connector Assembly, Female, Single Row, Version A, Non-polarized, Wire Size 28 AWG, 0.38µm Gold (Au), 12 Circuits

**Documents:**

[3D Model](#) [Product Specification PS-70400 \(PDF\)](#)  
[Drawing \(PDF\)](#) [RoHS Certificate of Compliance \(PDF\)](#)

**Agency Certification**

CSA LR19980  
 UL E29179

**General**

Product Family Ribbon Cable / Wire Trap Connectors  
 Series [70400](#)  
 Comments Terminals Preloaded  
 Component Type Housing  
 Glow-Wire Compliant No  
 Overview [C-Grid® Products](#)  
 Product Name SL™  
 UPC 800753760820

**Physical**

Circuits (Loaded) 12  
 Color - Resin Black  
 Durability (mating cycles max) 50  
 Entry Angle Vertical  
 Flammability 94V-0  
 Lock to Mating Part None  
 Material - Metal Phosphor Bronze  
 Material - Plating Mating Gold  
 Material - Plating Termination Tin  
 Material - Resin Polyester Alloy  
 Number of Rows 1  
 PCB Retention None  
 Packaging Type Tube  
 Pitch - Mating Interface 2.54mm  
 Plating min - Mating 0.381µm  
 Plating min - Termination 1.905µm  
 Polarized to Mating Part No  
 Stackable Yes  
 Surface Mount Compatible (SMC) N/A  
 Temperature Range - Operating -40°C to +105°C  
 Termination Interface: Style IDT or Pierce  
 Wire Insulation Diameter 1.35mm max.  
 Wire Size AWG 28  
 Wire/Cable Type Discrete Wire, Ribbon Cable

**Electrical**

Current - Maximum per Contact 3A  
 Voltage - Maximum 250V

**Material Info**

Old Part Number 70400-0886

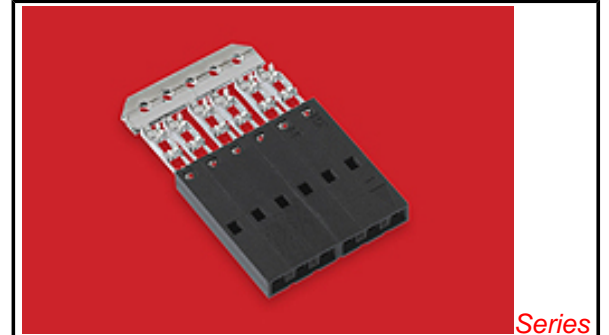


image - Reference only

Series

**EU RoHS**

**ELV and RoHS Compliant**

**REACH SVHC Not Reviewed**

**Low-Halogen Status Not Reviewed**

**China RoHS**



**Need more information on product environmental compliance?**

Email [productcompliance@molex.com](mailto:productcompliance@molex.com)  
 For a multiple part number RoHS Certificate of Compliance, [click here](#)

Please visit the [Contact Us](#) section for any non-product compliance questions.

**Search Parts in this Series**

[70400Series](#)

**Mates With**

Single Row headers and housings, [8624](#) , [70203](#) , [42375](#) , [42377](#)

**Use With**

[7307](#) Tinned 28AWG, [7767](#) Topcoat 28AWG, [24241](#) Tinned 26AWG, [8996](#) Topcoat 26AWG, [24226](#) Tinned 24AWG, [8997](#) Topcoat 24AWG, [24369](#) High Flex 26AWG, [24389](#) High Flex 24AWG

**Application Tooling | FAQ**

*Tooling specifications and manuals are found by selecting the products below. Crimp Height Specifications are then contained in the Application Tooling Specification document.*

**Global**

Description	Product #
Ribbon Cable Tool Kit, Press Not Included	<a href="#">0622016600</a>

## Reference - Drawing Numbers

Product Specification  
Sales Drawing

PS-70400  
SDA-70400-0876-0899

Hawk™ Ribbon Cable Terminator without Break-off	<u>0623003000</u>
Hawk™ Ribbon Cable Terminator with Break-off	<u>0623005300</u>
IDT - Semi-automatic - Bench-Top Terminator	<u>0011200949</u>
Hawk™ Semi- Automatic Discrete Wire Terminator	<u>0623003100</u>
Hawk™ Semi- Automatic Discrete Wire Terminator for Rebuilt CE Approved*	<u>0623004900</u>
Hawk™ Flat Flex Cable Terminator with Break-off	<u>0623005200</u>
IDT Discrete Handtool Module	<u>0621000700</u>

This document was generated on 06/27/2013

**PLEASE CHECK [WWW.MOLEX.COM](http://WWW.MOLEX.COM) FOR LATEST PART INFORMATION**