

Actuator

14-
141.022K



<https://eao.com/p/14-141.022K>

Your product:



14-141.022K Actuator

FRONT

Front bezel colour: Nature

Front bezel material: Aluminium

ELECTRICAL CHARACTERISTICS

Contacts: 1 NC / 1 NO

Thermal current I_{th}: The maximum current in continuous operation and at ambient temperature not exceeding the quoted maximum values.
3 A

Protection class: II

Electric strength: 3000 VAC, 50 Hz, 1 min. between all terminals and earth, according to EN/IEC 61058-1

Rated Operational Voltage U_e: 250 VAC/DC according to EN IEC 61058-1

Standards: According to EN/IEC 61058-1

Electrical lifetime: 50 000 cycles of operation

Switching voltage and switching current:
250 VAC, 5 A (ohmic)
250 VAC, 3 A (Soldering terminal)
250 VAC, 2 A (inductive, cos(phi) = 0.7)
220 VDC, 0.1 A (inductive, L:R = 30 ms)
110 VDC, 0.2 A (inductive, L:R = 30 ms)
60 VDC, 0.7 A (inductive, L:R = 30 ms)
24 VDC, 2 A (inductive, L:R = 30 ms)

MECHANICAL CHARACTERISTIC

Switching action: Rest (a) - Momentary

Contact material: Gold

Terminal: Plug-in terminal, 2.8 x 0.5 mm

Operating Travel: ca. 42°

Switching system:	Snap-action switching element
Switching system:	Self-cleaning, double-break snap action switching system (contact opening width 2 mm x 0.5 mm), 1 normally closed and 1 normally open contact per element.
Switching angle:	42° right
Operating force:	3 N ... 6 N
Weight:	0.029 kg
Switching positions:	2 positions
Mechanical lifetime:	1 Mio. cycles of operation
Tightening torque:	Fixing nut max. 0.25 Nm

AMBIENT CONDITION

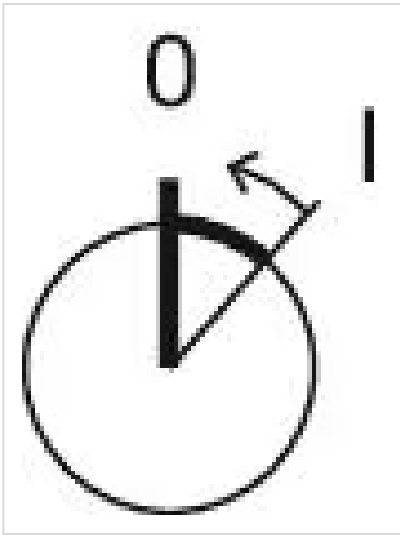
Storage temperature:	- 40 °C ... + 85 °C
Climate resistance:	Standard condition, as per DIN EN 60068-2-78 Standard cyclic, as per DIN IEC 60068-2-30
Operating temperature:	- 25 °C ... + 55 °C, mounted as a block, make sure the heat can escape freely
Shock resistance:	Max. 150 m / s ² , pulse width 11 ms, 3-axis, (semi-sinusoidal as per EN IEC 60068-2-27)
IP front protection:	IP65, according to DIN EN 60529
Vibration resistance:	Max. 100 m / s ² from 10 Hz ... 500 Hz, (sinusoidal EN IEC 60068-2-6)

CERTIFICATE

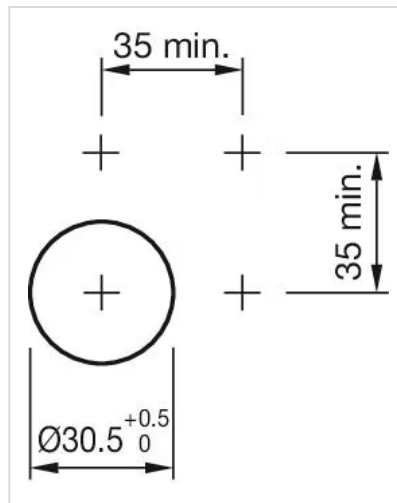
Conformities:	CE, UKCA, 2011 / 65 / EC (RoHS), 2014 / 35 / EU (LVD)
Approbations:	CB (IEC 61058-1), CQC, CSA, DNV, EAC, ENEC (EN 61058-1), UL, VDE

OTHER

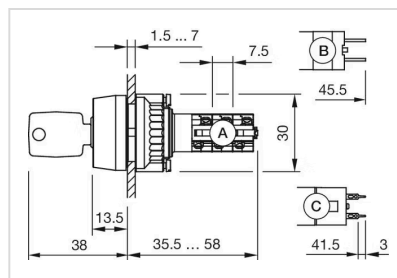
max. number of switching elements:	1
Housing colour:	Black
Hints:	Lock numbers 1001, lock type KABA
Short Description:	Actuator, Nature, Aluminium, anodised, 1 NC / 1 NO, Rest (a) - Momentary, Plug-in terminal, 2.8 x 0.5 mm, IP65, according to DIN EN 60529
Switching positions:	



Mounting cut-outs:



Dimension drawings:



Wiring diagrams:

