

# Actuator

14-  
131.0252



<https://eao.com/p/14-131.0252>

Your product:

---



## 14-131.0252 Actuator

### OPERATING-/INDICATION PART

**Lens illumination:** illuminative

### ELECTRICAL CHARACTERISTICS

**Electrical lifetime:** 50 000 cycles of operation

**Thermal current I<sub>th</sub>:** The maximum current in continuous operation and at ambient temperature not exceeding the quoted maximum values.  
3 A

**Protection class:** II

**Contacts:** 1 NC / 1 NO

**Standards:** According to EN/IEC 61058-1

**Rated Operational Voltage U<sub>e</sub>:** 250 VAC/DC according to EN IEC 61058-1

**Electric strength:** 3000 VAC, 50 Hz, 1 min. between all terminals and earth, according to EN/IEC 61058-1

**Switching voltage and switching current:**  
250 VAC, 5 A (ohmic)  
250 VAC, 3 A (Soldering terminal)  
250 VAC, 2 A (inductive, cos(phi) = 0.7)  
220 VDC, 0.1 A (inductive, L:R = 30 ms)  
110 VDC, 0.2 A (inductive, L:R = 30 ms)  
60 VDC, 0.7 A (inductive, L:R = 30 ms)  
24 VDC, 2 A (inductive, L:R = 30 ms)

### MECHANICAL CHARACTERISTIC

**Switching system:** Snap-action switching element

**Weight:** 0.013 kg

**Terminal:** Soldering terminal

**Switching action:** Momentary

**Operating Travel:** 3 mm

<b>Mechanical lifetime:</b>	2 Mio. cycles of operation
<b>Contact material:</b>	Gold
<b>Operating force:</b>	3 N ... 6 N, depending on the number of switching elements
<b>Tightening torque:</b>	Fixing nut max. 0.25 Nm
<b>Switching system:</b>	Self-cleaning, double-break snap action switching system, 1 normally closed and 1 normally open contact per element.

## AMBIENT CONDITION

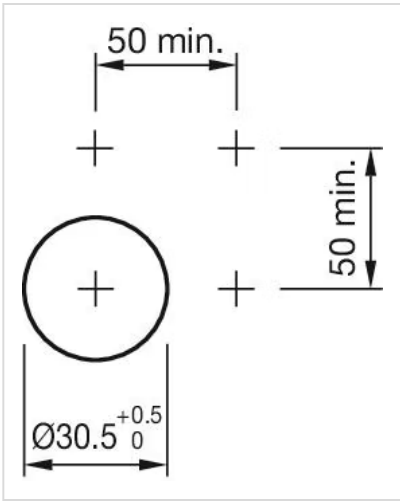
<b>Vibration resistance:</b>	Max. 100 m / s <sup>2</sup> from 10 Hz ... 500 Hz, (sinusoidal EN IEC 60068-2-6)
<b>Shock resistance:</b>	Max. 150 m / s <sup>2</sup> , pulse width 11 ms, 3-axis, (semi-sinusoidal as per EN IEC 60068-2-27)
<b>Operating temperature:</b>	- 25 °C ... + 55 °C, mounted as a block, make sure the heat can escape freely
<b>IP front protection:</b>	IP67, according to DIN EN 60529
<b>Climate resistance:</b>	Standard condition, as per DIN EN 60068-2-78 Standard cyclic, as per DIN IEC 60068-2-30
<b>Storage temperature:</b>	- 40 °C ... + 85 °C

## CERTIFICATE

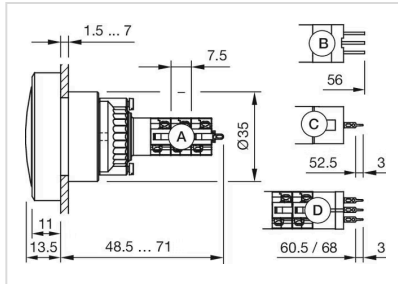
<b>Conformities:</b>	CE, UKCA, 2011 / 65 / EC (RoHS), 2014 / 35 / EU (LVD)
<b>Approbations:</b>	CB (IEC 61058-1), CQC, CSA, DNV, EAC, ENEC (EN 61058-1), UL, VDE

## OTHER

<b>max. number of switching elements:</b>	4
<b>Short Description:</b>	Actuator, illuminative, 1 NC / 1 NO, Momentary, Soldering terminal, IP67, according to DIN EN 60529
<b>Housing colour:</b>	Black
<b>Mounting cut-outs:</b>	



**Dimension drawings:**



**Wiring diagrams:**

