

ACT20M ACT20M-RTI-AO-S

Weidmüller Interface GmbH & Co. KG
 Klingenbergstraße 16
 D-32758 Detmold
 Germany
 Fon: +49 5231 1429-0
 Fax: +49 5231 14292083
 www.weidmueller.com



ACT20M: The slim solution

- Safe and space-saving (6 mm) isolation and conversion
- Quick installation of the power supply unit using the CH20M mounting rail bus
- Easy configuration via DIP switch or FDT/DTM software
- Extensive approvals such as ATEX, IECEx, GL, DNV
- High interference resistance

General ordering data

Type	ACT20M-RTI-AO-S
Order No.	1375510000
Version	Temperature converter, 2-/3-/4- wire RTD, Input : Temperature, Output : I / U
GTIN (EAN)	4050118259667
Qty.	1 pc(s).

ACT20M
ACT20M-RTI-AO-S

Weidmüller Interface GmbH & Co. KG
 Klingenbergstraße 16
 D-32758 Detmold
 Germany
 Fon: +49 5231 1429-0
 Fax: +49 5231 14292083
 www.weidmueller.com

Technical data**Dimensions and weights**

Width	6.1 mm	Width (inches)	0.24 inch
Height	112.5 mm	Height (inches)	4.429 inch
Depth	114.3 mm	Depth (inches)	4.5 inch
Net weight	89 g		

Temperatures

Humidity	95 %, no condensation	Operating temperature	
Ambient temperature	-25 °C...+70 °C	Storage temperature	-40 °C...85 °C

Probability of failure

MTBF	152 Years
------	-----------

Input

Number of inputs	1	Sensor	PT100 / 2-/3-/4-wire
Influence of the sensor cable resistance	< 0.002 Ω/Ω (@ 3/4-wire)	Input measurement range	PT100 -200...+850 °C
Line resistance in measuring circuit	≤ 50 Ω	Temperature input range	Configurable, min. measurement range 10°C (RTD)

Output

Number of outputs	1	Output signal limit	< 4 mA (average), < 60 mA (pulse current), low duty cycle
Output voltage, note	configurable, 0(2)...10 V, 0(1)...5 V	Output current	configurable, 0...20 mA, 4...20 mA
Wire break detection	3.5 mA / 23 mA / none	load impedance voltage	≥ 10 kΩ
load impedance current	≤ 600 Ω		

General data

Accuracy	absolute accuracy: < ±0.05 % of the measurement range, Basic accuracy: < ±0.1°C	Configuration	DIP switch
Galvanic isolation	3-way isolator	Mounting rail	TS 35
Power consumption, max.	0.7 W	Power consumption, typ.	0.49 W
Step response time	≤ 30 ms, < 300 ms	Supply voltage	24 V DC ± 30 %
Temperature coefficient	≤ 0.01 % of the measurement range/°C or 0.02 °C/°C		

Insulation coordination

EMC standards	IEC 61326-1, NE 21	Galvanic isolation	3-way isolator
Insulation voltage	2.5 kV _{eff} / 1 min.	Pollution severity	2
Rated voltage	300 V _{eff}	Standards	IEC 61010-1
Surge voltage category	II		

Data for Ex applications (ATEX)

Marking	II 3 G Ex nA IIC T4 Gc
---------	------------------------

Creation date November 7, 2017 5:30:56 PM CET

Catalogue status 20.10.2017 / We reserve the right to make technical changes.

Data sheet

ACT20M ACT20M-RTI-AO-S

Weidmüller Interface GmbH & Co. KG
 Klingenbergstraße 16
 D-32758 Detmold
 Germany
 Fon: +49 5231 1429-0
 Fax: +49 5231 14292083
 www.weidmueller.com

Technical data

Connection data

Type of connection	Screw connection	Tightening torque, min.	0.4 Nm
Tightening torque, max.	0.6 Nm	Clamping range, rated connection	2.5 mm ²
Clamping range, rated connection, min.	0.5 mm ²	Clamping range, rated connection, max.	2.5 mm ²
Wire connection cross section AWG, min.	AWG 30	Wire connection cross section AWG, max.	AWG 14

Rated data UL

UL certificate	E337701.pdf
----------------	-------------

Ratings IECEx/ATEX/cUL

Certificate No. (ATEX)	KEMA10ATEX0183X	Certificate No. (IECEX)	IECEXKEM10.0090X
------------------------	-----------------	-------------------------	------------------

Classifications

ETIM 5.0	EC002653	ETIM 6.0	EC002919
eClass 6.2	27-21-01-20	eClass 7.1	27-21-01-20
eClass 8.1	27-21-01-20	eClass 9.0	27-21-01-20
eClass 9.1	27-21-01-29		

Product information

Descriptive text accessories	DIN mounting rail, see accessories
------------------------------	------------------------------------

Approvals

Approvals



ROHS	Conform
------	---------

Downloads

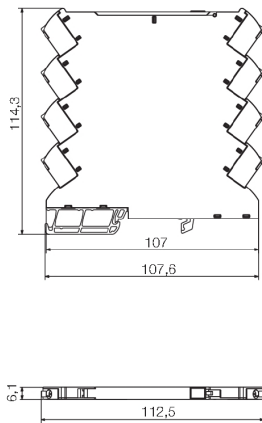
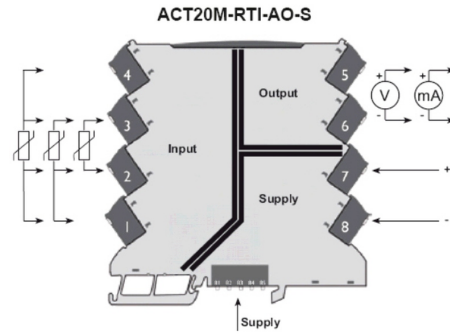
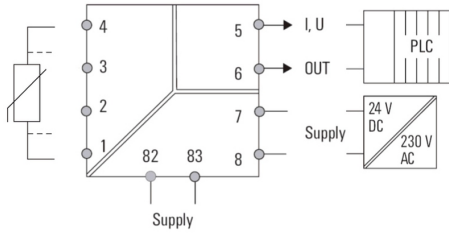
Approval/Certificate/Document of Conformity	Declaration of Conformity
Brochure/Catalogue	CAT 4.1 ELECTR 16/17 EN
Engineering Data	EPLAN, WSCAD, Zuken E3.S
Software	DIP switch configuration tool
User Documentation	instruction sheet

Data sheet

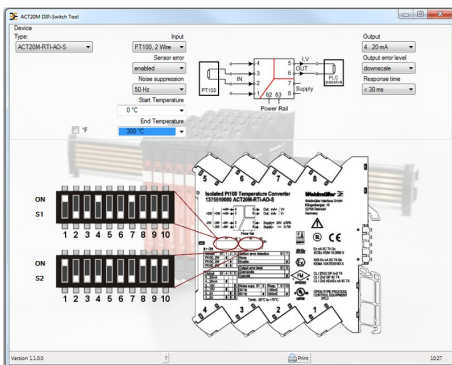
**ACT20M
ACT20M-RTI-AO-S**

Weidmüller Interface GmbH & Co. KG
 Klingenbergstraße 16
 D-32758 Detmold
 Germany
 Fon: +49 5231 1429-0
 Fax: +49 5231 14292083
 www.weidmueller.com

Drawings



Power supply via the rail bus



example for DIP switch setting
(with ACT20M tool software)