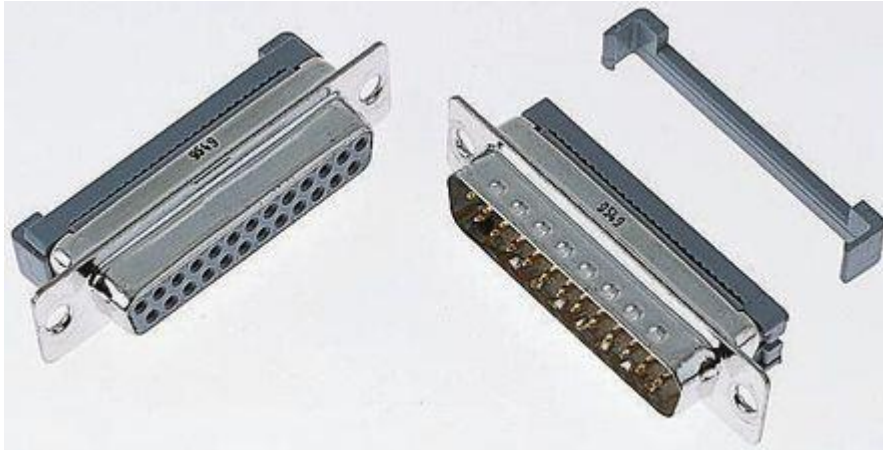


Professionally approved products.

Datasheet

0.05in Pitch 37 Way IDC D-sub Connector, Plug, Metal Shell

RS Stock number [136-487](#)



Product Specification

Material

Insulator : Glass-Filled Thermoplastic PBT, UL94V-0

Contact : Brass

Shell : Steel, 100u" Tin Over 50u" min Copper

Clinch Nut : Brass, Nickel Plated

Screwlock : Steel, Nickel Plated

Electrical

Contact Resistance : 20 milliohms
Max at 1 AMP DC.

Insulation Resistance : 1000
megohms at 500 VDC

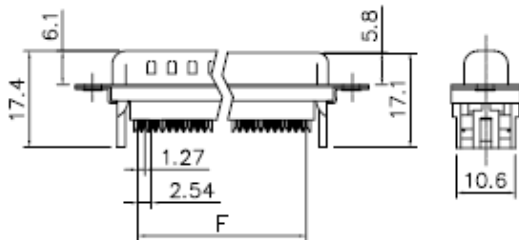
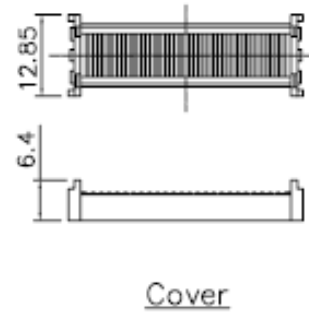
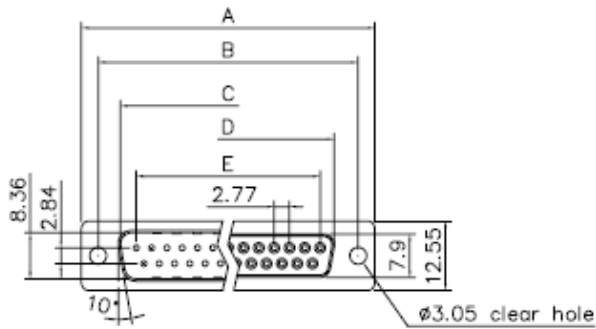
Dielectric Withstanding Voltage :
1000 VAC/rms 60Hz for 1 minute

Current Rating : 3 AMP

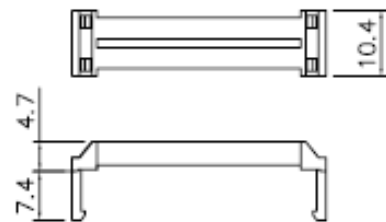
Volatge Rating : 250 VAC/rms 60Hz

Professionally approved products. Datasheet

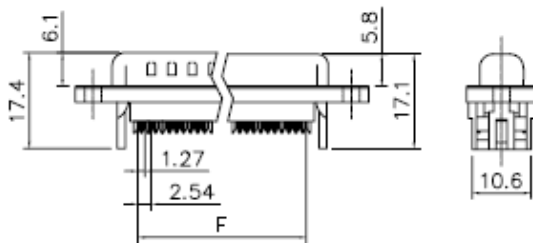
Drawing (mm):



Without Insulator Support



Strain Relief



With Insulator Support

Dimensions (mm):

Positions	A	B	C	D	E	F
9	30.81	24.99	16.92	16.33	11.08	10.16
15	39.20	33.30	25.25	24.70	19.39	17.78
25	53.05	47.04	38.96	38.40	33.24	30.48
37	69.40	63.50	55.42	54.84	49.86	45.72