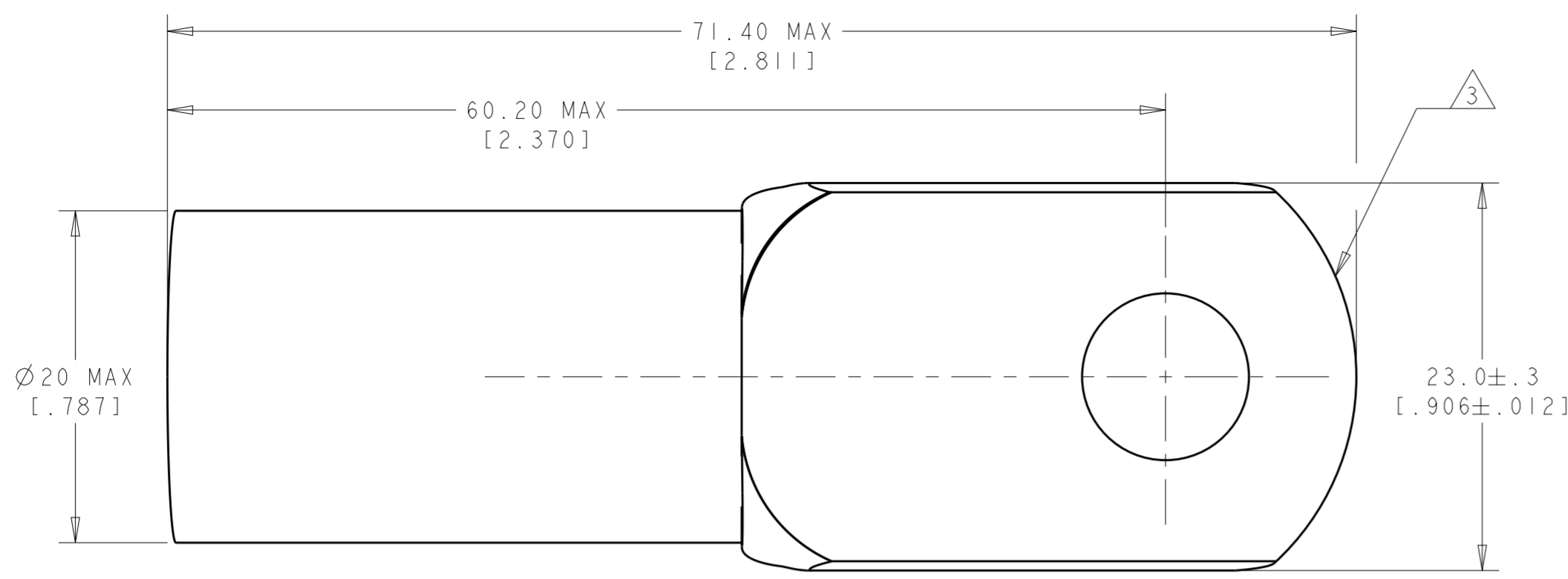
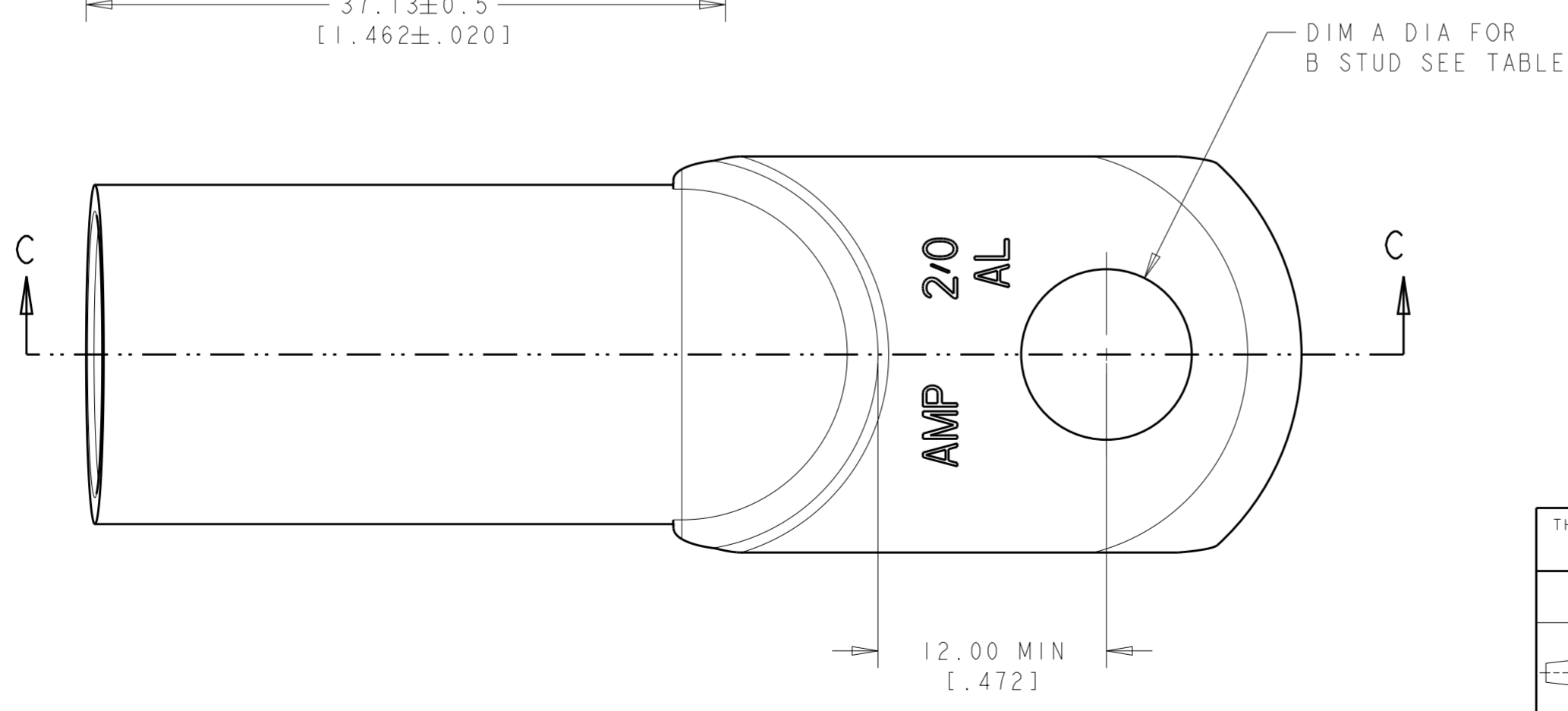
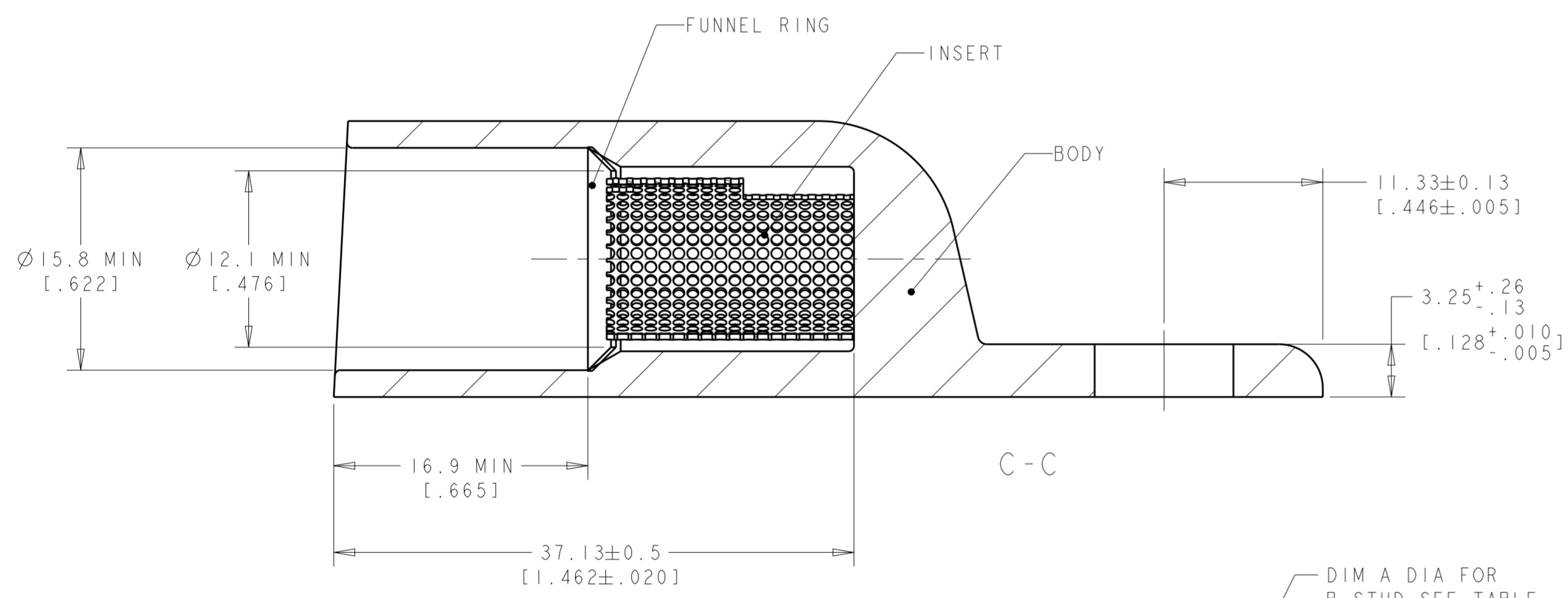


THIS DRAWING IS UNPUBLISHED. RELEASED FOR PUBLICATION 20  
 © COPYRIGHT 20 BY - ALL RIGHTS RESERVED.

REVISIONS					
P	LTR	DESCRIPTION	DATE	DWN	APVD
	M	REV PER ECO 20-002238	7-22-20	CT	PD



- 1: WIRE INSULATION : 12.7[.500]-14.0[.551]
- 2: ALUMINUM WIRE CMA: 119500 - 150500  
ALUMINUM WIRE mm<sup>2</sup>: 60.55 - 76.26
- 3: TONGUE RADIUS FEATURE IS NOT A TOOLING CONTROLLED DIMENSION AND MAY NOT BE A TRUE RADIUS



WEIGHT	DIM A	B	MATERIAL&FINISH	PART NUMBER	
80 gms	6.73+/-0.13 [.265+/-0.005]	1/4 or M6	BODY: COPPER ASTM B187 ANNEALED TIN PLATE .00381[.000150] MIN THICK PER MIL-T-10727	134594-4	OBSOLETE
79 gms	8.34±0.13 [.328±.005]	5/16 or M8	INSERT&FUNNEL: BRASS ASTM B36 NICKEL PLATE SAE AMS QQ-N-290A, DATED JULY 2000, .00254 [0.000100] MIN THICK	134594-3	
78 gms	10.04±0.13 [.395±.005]	3/8 or M10		134594-1	

THIS DRAWING IS A CONTROLLED DOCUMENT.

DWN	JJ DESPRETZ	24 JUN 2004
CHK	G-ROBERT	24 JUN 2004
APVD	Y PETRONIN	24 JUN 2004

**STE** TE Connectivity

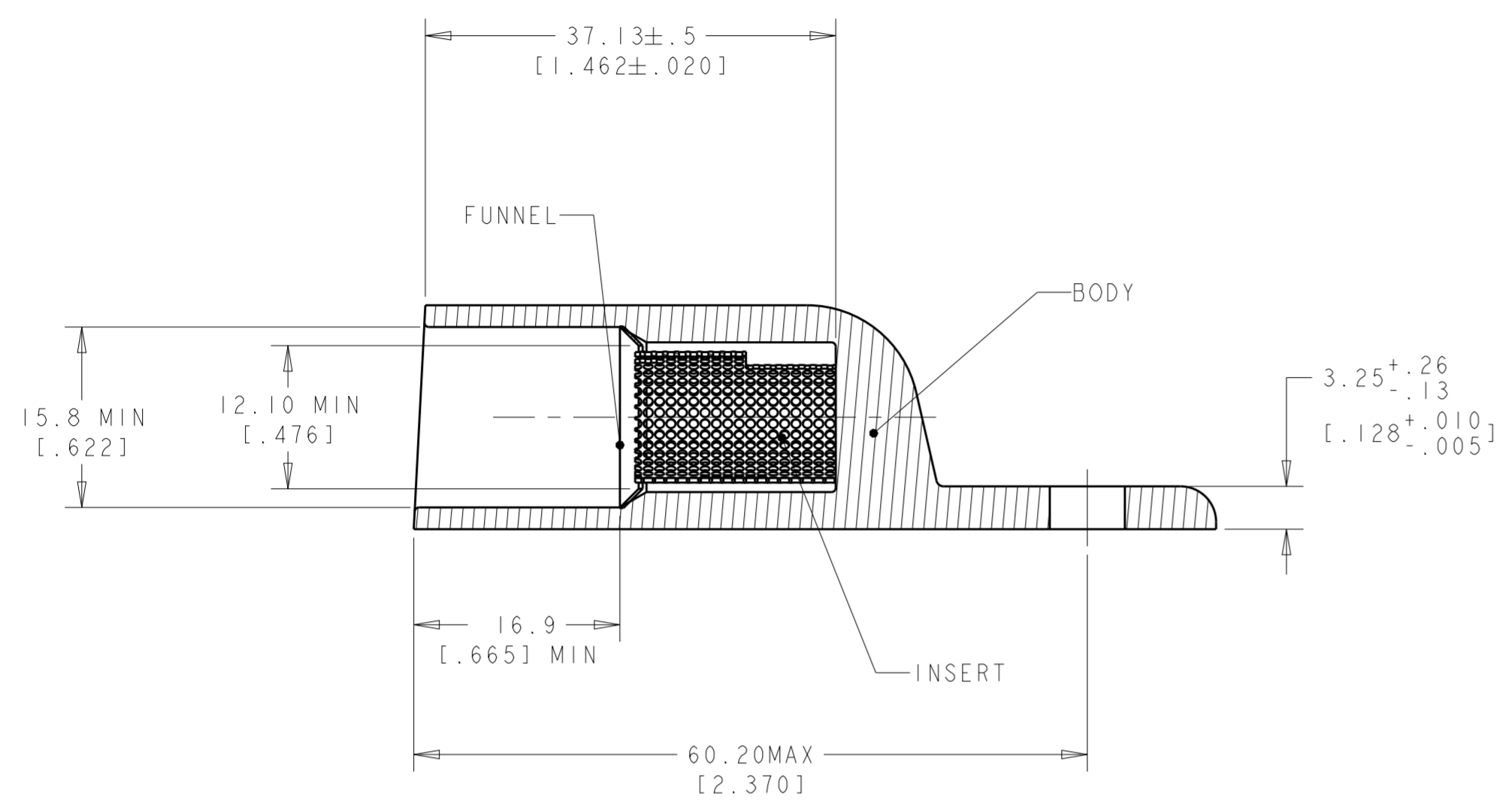
NAME: SEALED COPALUM ASSEMBLY 2/0 AL

SIZE	A2	CAGE CODE	-	DRAWING NO	C-134594	RESTRICTED TO	
SCALE	2:1	SHEET	1	OF	4	REV	M

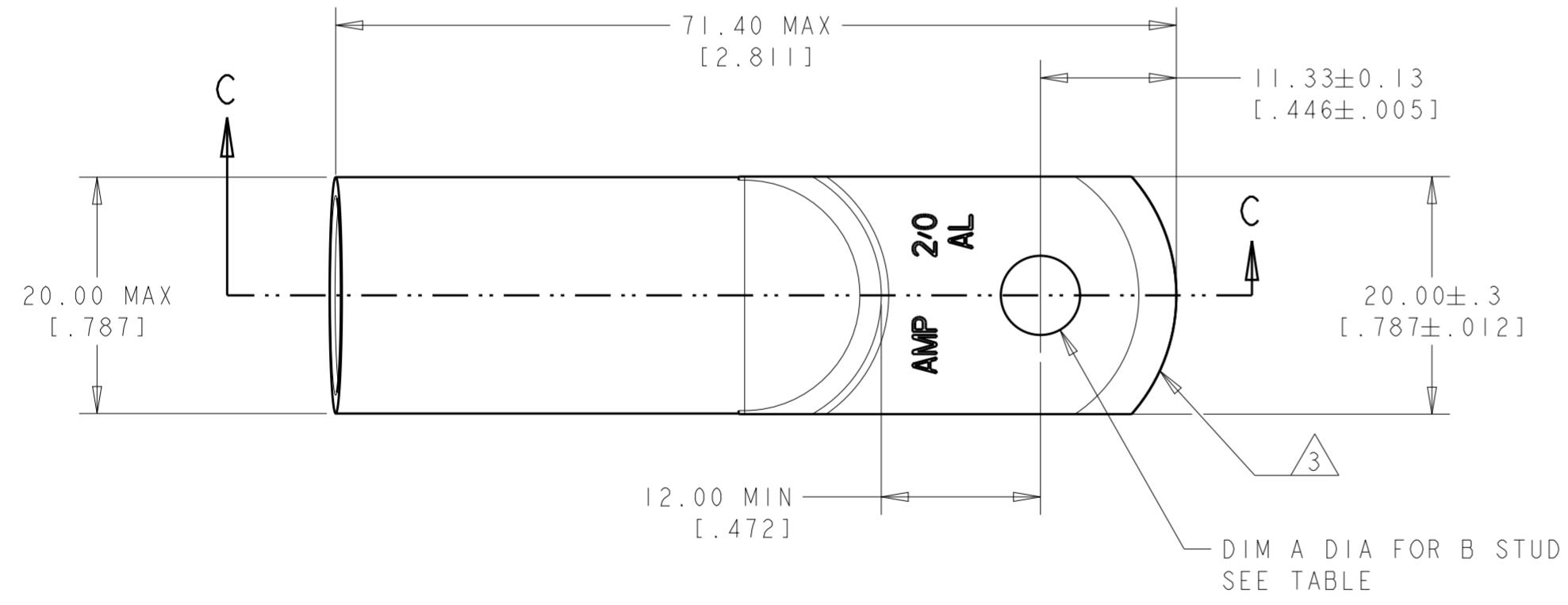
CUSTOMER DRAWING

THIS DRAWING IS UNPUBLISHED. RELEASED FOR PUBLICATION 20  
 © COPYRIGHT 20 BY - ALL RIGHTS RESERVED.

REVISIONS				
P	LTR	DESCRIPTION	DATE	APVD
-	-	SEE SHEET 1	-	-



SECTION C-C



- 1: WIRE INSULATION : 12.7[.500]-14.0[.551]
- 2: ALUMINUM WIRE CMA: 119500 - 150500  
ALUMINUM WIRE mm<sup>2</sup>: 60.55 - 76.26

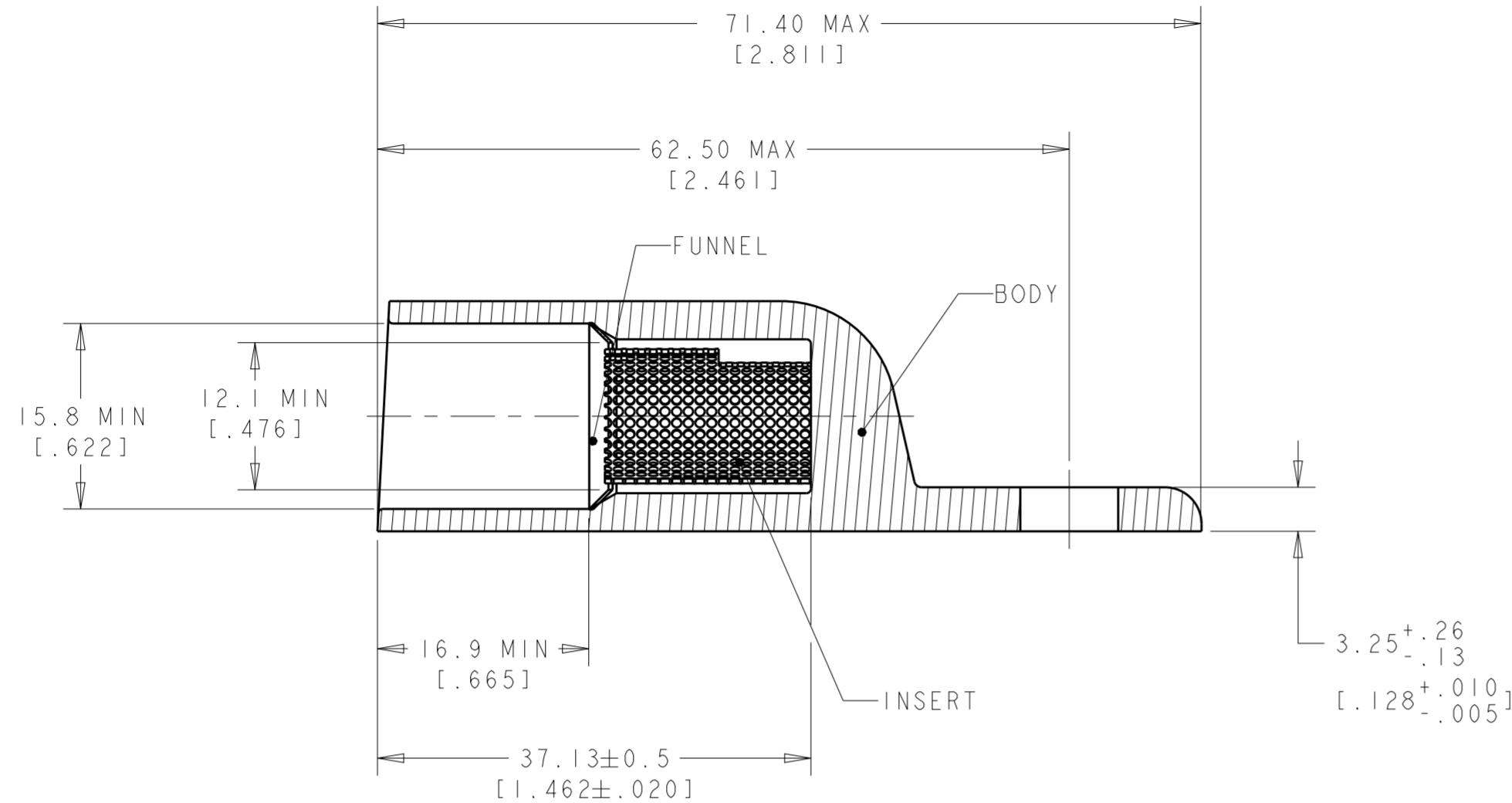
3 TONGUE RADIUS FEATURE IS NOT A TOOLING CONTROLLED DIMENSION AND MAY NOT BE A TRUE RADIUS

77 grams	8.34±/-0.13 [.328±/-0.005]	5/16 or M8	BODY: COPPER ASTM B187 ANNEALED TIN PLATE .0038[.000150] MIN THICK PER MIL-T-10727	134594-6
78 grams	6.73±/-0.13 [.265±/-0.005]	1/4 or M6	INSERT&FUNNEL: BRASS ASTM B36 NICKEL PLATE SAE AMS QQ-N-290A, DATED JULY 2000, .00254 [0.000100] MIN THICK	134594-2
WEIGHT	DIM A	B	MATERIAL&FINISH	PART NUMBER

THIS DRAWING IS A CONTROLLED DOCUMENT.		DWN JJ DESPRETZ 24 JUN 2004	TE Connectivity	
DIMENSIONS: mm [Inches]		CHK G-ROBERT 24 JUN 2004		
TOLERANCES UNLESS OTHERWISE SPECIFIED:		APVD Y PETRONIN 24 JUN 2004	NAME SEALED COPALUM ASSEMBLY 2/O AL	
0 PLC ±0.3		PRODUCT SPEC -	SIZE A2	
1 PLC ±0.3		APPLICATION SPEC -	CAGE CODE -	
2 PLC ±0.13		WEIGHT -	DRAWING NO C-134594	
3 PLC ±		CUSTOMER DRAWING	RESTRICTED TO	
4 PLC ±		SCALE 2:1	SHEET 2 OF 4	
ANGLES ±5		REV M		
FINISH -				

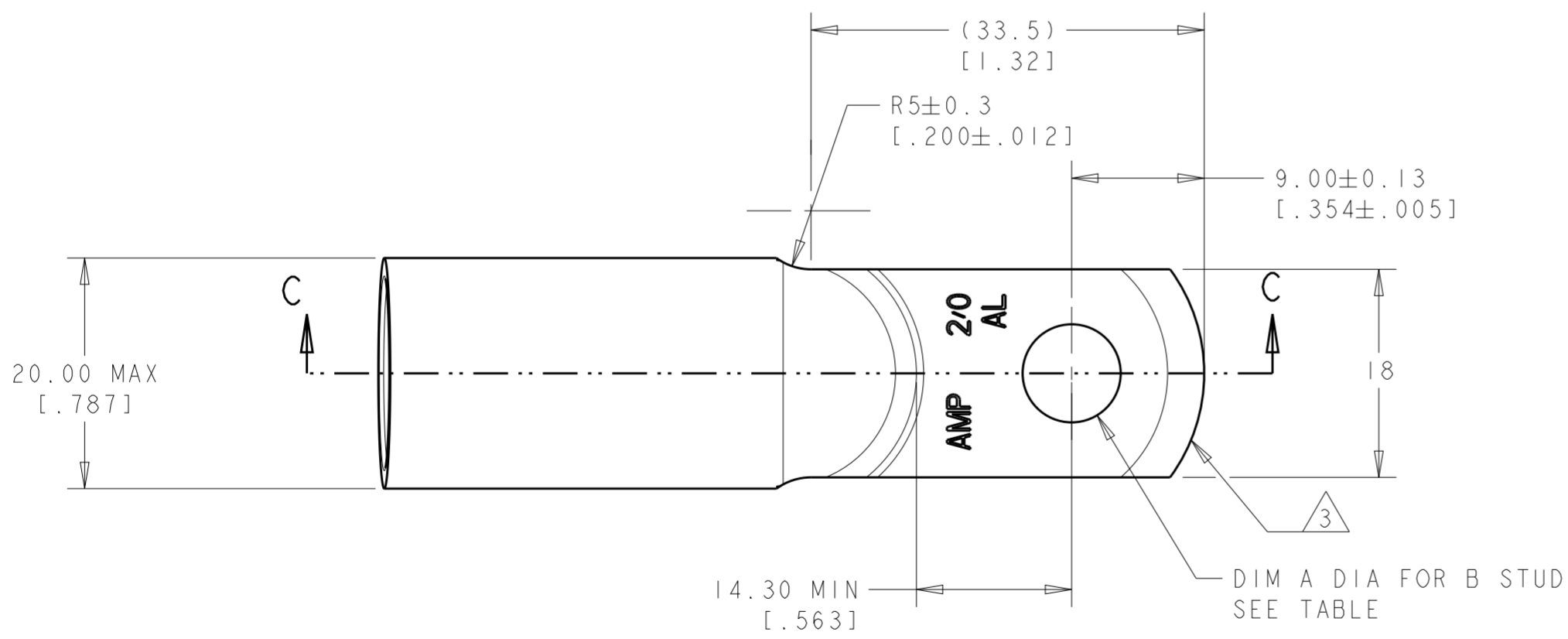
THIS DRAWING IS UNPUBLISHED. RELEASED FOR PUBLICATION 20  
 © COPYRIGHT 20 BY - ALL RIGHTS RESERVED.

REVISIONS				
P	LTR	DESCRIPTION	DATE	APVD
-		SEE SHEET 1	-	-



SECTION C-C

- 1: WIRE INSULATION : 12.7[.500]-14.0[.551]
- 2: ALUMINUM WIRE CMA: 119500 - 150500  
ALUMINUM WIRE mm<sup>2</sup>: 60.55 - 76.26
- 3: TONGUE RADIUS FEATURE IS NOT A TOOLING CONTROLLED DIMENSION AND MAY NOT BE A TRUE RADIUS

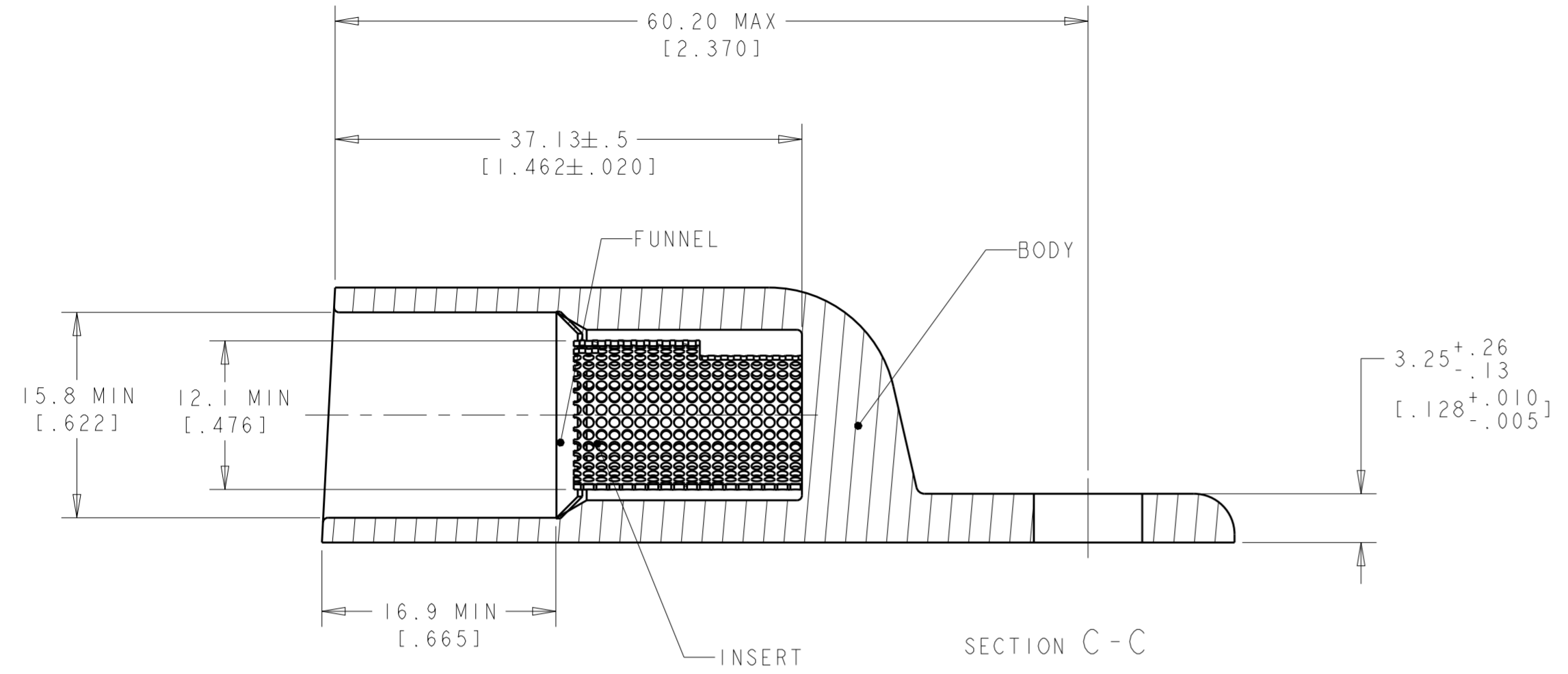


77 grams	8.34±0.13 [.328±.005]	5/16 or M8	BODY: COPPER ASTM B187 ANNEALED TIN PLATE .00381[.000150] MIN THICK PER MIL-T-10727 INSERT&FUNNEL: BRASS ASTM B36 NICKEL PLATE SAE AMS QQ-N-290A, DATED JULY 2000, .00254 [ .000100] MIN THICK	134594-5
WEIGHT	DIM A	B	MATERIAL&FINISH	PART NUMBER

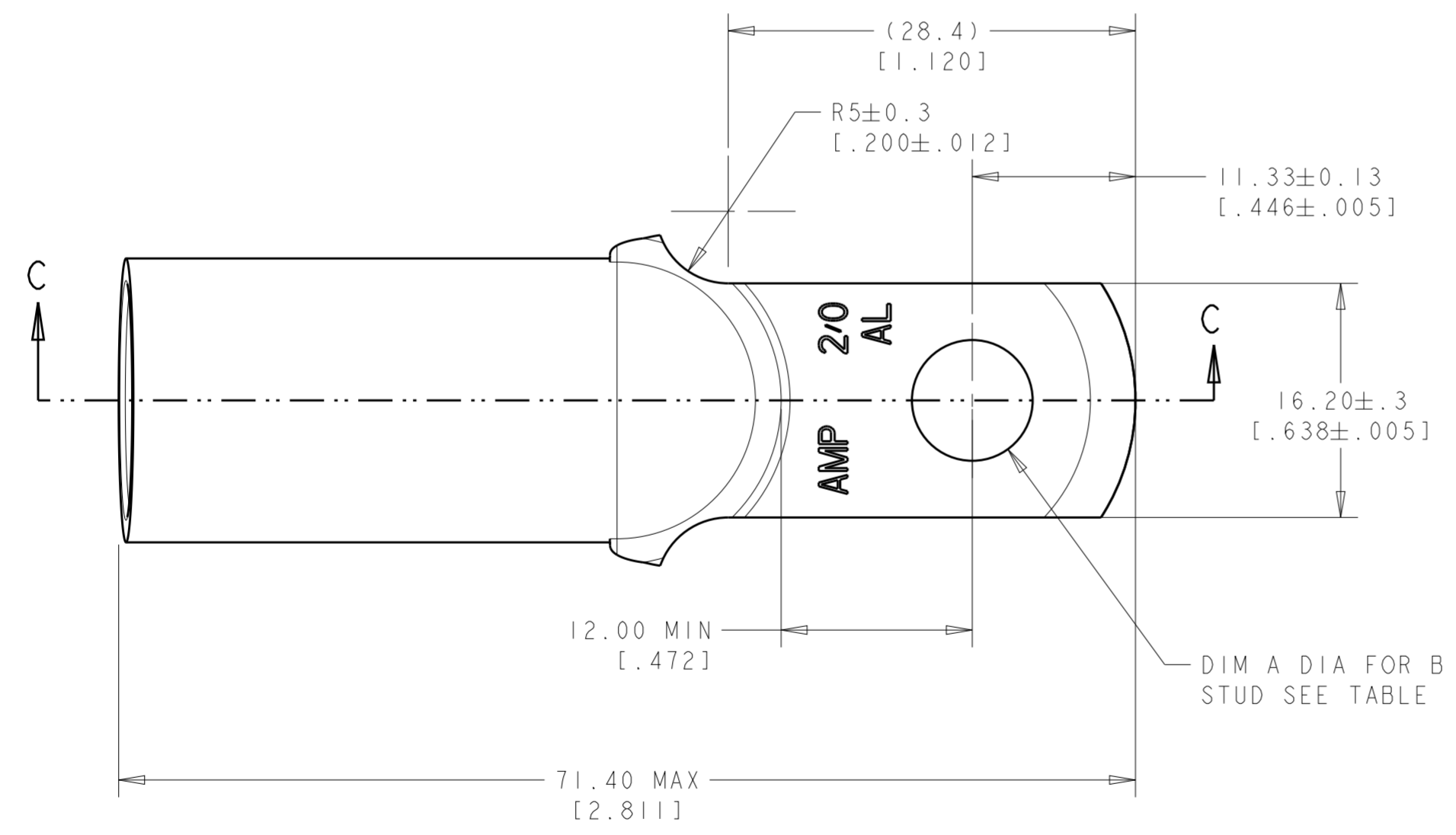
THIS DRAWING IS A CONTROLLED DOCUMENT.		DWN JJ. DESPRETZ 24 JUN 2004	TE Connectivity	
DIMENSIONS: mm [Inches]		CHK G-ROBERT 24 JUN 2004		
TOLERANCES UNLESS OTHERWISE SPECIFIED:		APVD Y. PETRONIN 24 JUN 2004	NAME SEALED COPALUM ASSEMBLY 2/0 AL	
0 PLC ±0.3	1 PLC ±0.3	PRODUCT SPEC -	SIZE A2	
2 PLC ±0.13	3 PLC ±	APPLICATION SPEC -	CAGE CODE -	
4 PLC ±	ANGLES ±5	FINISH -	DRAWING NO G-134594	
MATERIAL -	FINISH -	WEIGHT -	RESTRICTED TO	
CUSTOMER DRAWING			SCALE 2:1	SHEET 3 OF 4

THIS DRAWING IS UNPUBLISHED. RELEASED FOR PUBLICATION 20  
 © COPYRIGHT 20 BY - ALL RIGHTS RESERVED.

REVISIONS				
P	LTR	DESCRIPTION	DATE	APVD
-	-	SEE SHEET 1	-	-



- 1: WIRE INSULATION : 12.7[.500]-14.0[.551]
  - 2: ALUMINUM WIRE CMA: 119500 - 150500  
ALUMINUM WIRE mm<sup>2</sup>: 60.55 - 76.26
- △ 3 TONGUE RADIUS FEATURE IS NOT A TOOLING CONTROLLED DIMENSION AND MAY NOT BE A TRUE RADIUS



76 grams	8.34 ± 0.13 [.328 ± .005]	5/16 or M8	BODY: COPPER ASTM B187 ANNEALED TIN PLATE .00381 [.000150] MIN THICK PER MIL-T-10727 INSERT&FUNNEL: BRASS ASTM B36 NICKEL PLATE SAE AMS QQ-N-290A, DATED JULY 2000, .00254 [.000100] MIN THICK	134594-7
WEIGHT	DIM A	B	MATERIAL&FINISH	PART NUMBER

THIS DRAWING IS A CONTROLLED DOCUMENT.		DWN JJ DESPRETZ 24 JUN 2004	<b>STE</b> TE Connectivity	
DIMENSIONS: mm [Inches]		CHK G-ROBERT 24 JUN 2004		
TOLERANCES UNLESS OTHERWISE SPECIFIED:		APVD Y PETRONIN 24 JUN 2004	NAME SEALED COPALUM ASSEMBLY 2/0 AL	
0 PLC ±0.3		PRODUCT SPEC -	SIZE A2	
1 PLC ±0.3		APPLICATION SPEC -	CAGE CODE -	
2 PLC ±0.13		WEIGHT -	DRAWING NO C-134594	
3 PLC ±		CUSTOMER DRAWING	RESTRICTED TO	
4 PLC ±		SCALE 2:1	SHEET 4 OF 4	
ANGLES ±5			REV M	
FINISH -				