

# Protective conductor terminal - XTV 6-QUATTRO-PE



1329513

<https://www.phoenixcontact.com/us/products/1329513>

Please be informed that the data shown in this PDF document is generated from our Online Catalog. Please find the complete data in the user documentation. Our General Terms of Use for Downloads are valid.



Protective conductor terminal, number of connections: 4, number of positions: 1, connection method: Push-X-connection, Rated cross section: 6 mm<sup>2</sup>, cross section: 0.5 mm<sup>2</sup> - 10 mm<sup>2</sup>, mounting type: NS 35/7,5, NS 35/15, color: green/yellow

## Your advantages

- Fast, powerless conductor connection for all conductor types with the pretensioned contact spring
- A high level of flexibility when inserting conductors enables conductors with or without ferrules to be connected easily
- Clear conductor connection with the lateral connection direction and the clear pusher position
- Easy procurement of information – the QR code on the terminal block provides all important information about the product
- Terminal blocks with Push-X connection are part of the COMPLETE line system

## Commercial Data

Item number	1329513
Packing unit	1 pc
Minimum order quantity	50 pc
Sales Key	B02
Product Key	BE2523
GTIN	4063151624330
Weight per Piece (including packing)	33 g
Weight per Piece (excluding packing)	33 g
Customs tariff number	85369010
Country of origin	CN

## Technical Data

### Notes

#### General

Note	When establishing a connection on the open housing side of a feed-through modular terminal block of the same series and size, the block must be provided with a cover if the expected insulation voltage is >320 V.
	The max. load current must not be exceeded by the total current of all connected conductors.

### Product properties

Product type	Ground terminal block
Number of positions	1
Area of application	Railway industry
	Machine building
	Plant engineering
Number of connections	4
Number of rows	1

#### Insulation characteristics

Overvoltage category	III
Degree of pollution	3

### Electrical properties

Rated surge voltage	8 kV
Maximum power dissipation for nominal condition	0 W

### Connection data

Number of connections per level	4
Nominal cross section	6 mm <sup>2</sup>
Stripping length	10 mm ... 12 mm
Internal cylindrical gage	A5
	B4
Conductor cross section solid	0.5 mm <sup>2</sup> ... 10 mm <sup>2</sup>
Cross section AWG	20 ... 8 (converted acc. to IEC)
Conductor cross section flexible	1.5 mm <sup>2</sup> ... 10 mm <sup>2</sup>
Conductor cross section, flexible [AWG]	14 ... 8 (converted acc. to IEC)
Flexible conductor cross section flexible (ferrule, w/o plastic sleeve)	1.5 mm <sup>2</sup> ... 6 mm <sup>2</sup>
Flexible conductor cross section (ferrule with plastic sleeve)	1.5 mm <sup>2</sup> ... 6 mm <sup>2</sup>
Nominal cross section	6 mm <sup>2</sup>

### Dimensions

Width	8.2 mm
-------	--------

# Protective conductor terminal - XTV 6-QUATTRO-PE



1329513

<https://www.phoenixcontact.com/us/products/1329513>

End cover width	2.2 mm
Height	57.6 mm
Height NS 35/15	66.6 mm
Height NS 35/7,5	59.1 mm
Length	90.6 mm

## Material specifications

Color	green/yellow
Flammability rating according to UL 94	V0
Insulating material group	I
Insulating material	PA
Static insulating material application in cold	-60 °C
Relative insulation material temperature index (Elec., UL 746 B)	130 °C
Fire protection for rail vehicles (DIN EN 45545-2) R22	HL 1 - HL 3
Fire protection for rail vehicles (DIN EN 45545-2) R23	HL 1 - HL 3
Fire protection for rail vehicles (DIN EN 45545-2) R24	HL 1 - HL 3
Fire protection for rail vehicles (DIN EN 45545-2) R26	HL 1 - HL 3
Surface flammability NFPA 130 (ASTM E 162)	passed
Specific optical density of smoke NFPA 130 (ASTM E 662)	passed
Smoke gas toxicity NFPA 130 (SMP 800C)	passed

## Mechanical properties

### Mechanical data

Open side panel	Yes
-----------------	-----

## Environmental and real-life conditions

### Oscillation/broadband noise

Specification	DIN EN 50155 (VDE 0115-200):2018-05
Spectrum	Service life test category 2, bogie-mounted
Frequency	$f_1 = 5 \text{ Hz}$ to $f_2 = 250 \text{ Hz}$
ASD level	6.12 (m/s <sup>2</sup> )/Hz
Acceleration	3.12g
Test duration per axis	5 h
Test directions	X-, Y- and Z-axis

### Shocks

Specification	DIN EN 50155 (VDE 0115-200):2018-05
Pulse shape	Half-sine
Acceleration	30g
Shock duration	18 ms
Number of shocks per direction	3
Test directions	X-, Y- and Z-axis (pos. and neg.)

### Ambient conditions

# Protective conductor terminal - XTV 6-QUATTRO-PE



1329513

<https://www.phoenixcontact.com/us/products/1329513>

Ambient temperature (operation)	-60 °C ... 105 °C (max. short-term operating temperature RTI Elec.)
Ambient temperature (storage/transport)	-25 °C ... 60 °C (for a short time, not exceeding 24 h, -60 °C to +70 °C)
Ambient temperature (assembly)	-5 °C ... 70 °C
Ambient temperature (actuation)	-5 °C ... 70 °C
Permissible humidity (storage/transport)	30 % ... 70 %

## Standards and regulations

Connection in acc. with standard	IEC 60947-7-2
----------------------------------	---------------

## Mounting

Mounting type	NS 35/7,5
	NS 35/15

# Protective conductor terminal - XTV 6-QUATTRO-PE

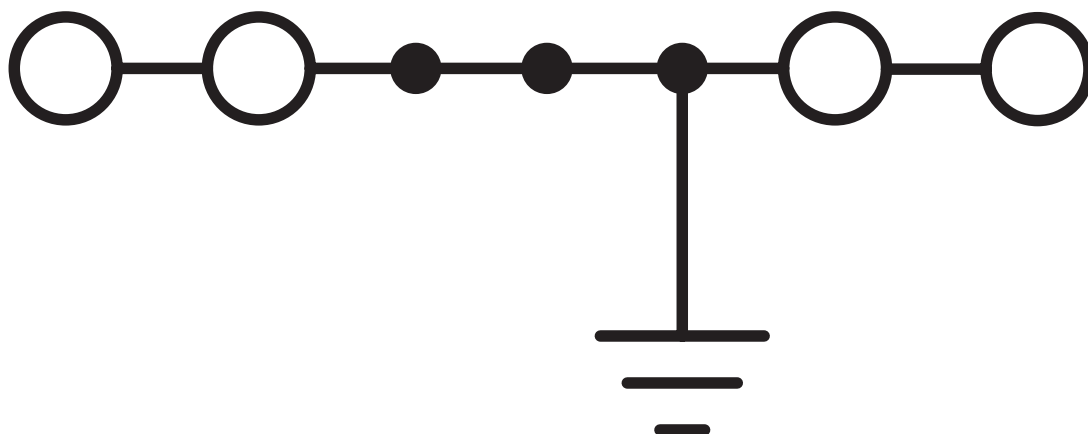


1329513

<https://www.phoenixcontact.com/us/products/1329513>

## Drawings

Circuit diagram




# Protective conductor terminal - XTV 6-QUATTRO-PE




1329513

<https://www.phoenixcontact.com/us/products/1329513>

## Approvals

 <b>CSA</b> Approval ID: 13631				
	Nominal Voltage $U_N$	Nominal Current $I_N$	Cross Section AWG	Cross Section $\text{mm}^2$
Use group B			14 - 8	-
Use group C			14 - 8	-

 <b>cULus Recognized</b> Approval ID: E60425				
	Nominal Voltage $U_N$	Nominal Current $I_N$	Cross Section AWG	Cross Section $\text{mm}^2$
Use group B			14 - 8	-
Use group C			14 - 8	-

# Protective conductor terminal - XTV 6-QUATTRO-PE



1329513

<https://www.phoenixcontact.com/us/products/1329513>

## Classifications

### ECLASS

ECLASS-11.0

27141141

### ETIM

ETIM 8.0

EC000901

### UNSPSC

UNSPSC 21.0

39121400

1329513

<https://www.phoenixcontact.com/us/products/1329513>

## Accessories



Note: Applying some accessories below might limit this product.

### Plug-in bridge

Plug-in bridge - FBS 2-8 - 3030284

<https://www.phoenixcontact.com/us/products/3030284>



Plug-in bridge, pitch: 8.2 mm, color: red

### Plug-in bridge

Plug-in bridge - FBS 3-8 - 3030297

<https://www.phoenixcontact.com/us/products/3030297>



Plug-in bridge, pitch: 8.2 mm, color: red

# Protective conductor terminal - XTV 6-QUATTRO-PE



1329513

<https://www.phoenixcontact.com/us/products/1329513>

## Plug-in bridge

Plug-in bridge - FBS 4-8 - 3030307

<https://www.phoenixcontact.com/us/products/3030307>



Plug-in bridge, pitch: 8.2 mm, color: red

---

## Plug-in bridge

Plug-in bridge - FBS 5-8 - 3030310

<https://www.phoenixcontact.com/us/products/3030310>



Plug-in bridge, pitch: 8.2 mm, color: red

# Protective conductor terminal - XTV 6-QUATTRO-PE



1329513

<https://www.phoenixcontact.com/us/products/1329513>

## Plug-in bridge

Plug-in bridge - FBS 6-8 - 3032470

<https://www.phoenixcontact.com/us/products/3032470>



Plug-in bridge, pitch: 8.2 mm, color: red

---

## Plug-in bridge

Plug-in bridge - FBS 10-8 - 3030323

<https://www.phoenixcontact.com/us/products/3030323>



Plug-in bridge, pitch: 8.2 mm, color: red

# Protective conductor terminal - XTV 6-QUATTRO-PE



1329513

<https://www.phoenixcontact.com/us/products/1329513>

## Plug-in bridge

Plug-in bridge - FBS 2-8 CT - 3033830

<https://www.phoenixcontact.com/us/products/3033830>



Plug-in bridge, pitch: 8.2 mm, color: orange

---

## Plug-in bridge

Plug-in bridge - FBS 3-8 CT - 3033831

<https://www.phoenixcontact.com/us/products/3033831>



Plug-in bridge, pitch: 8.2 mm, color: orange

# Protective conductor terminal - XTV 6-QUATTRO-PE



1329513

<https://www.phoenixcontact.com/us/products/1329513>

## Plug-in bridge

Plug-in bridge - FBS 4-8 CT - 3033832

<https://www.phoenixcontact.com/us/products/3033832>



Plug-in bridge, pitch: 8.2 mm, color: orange

---

## Plug-in bridge

Plug-in bridge - FBS 10-8 CT - 3033833

<https://www.phoenixcontact.com/us/products/3033833>



Plug-in bridge, pitch: 8.2 mm, color: orange

# Protective conductor terminal - XTV 6-QUATTRO-PE



1329513

<https://www.phoenixcontact.com/us/products/1329513>

## Plug-in bridge

Plug-in bridge - FBS 2-8 BU - 3032567

<https://www.phoenixcontact.com/us/products/3032567>



Plug-in bridge, pitch: 8.2 mm, color: blue

---

## Plug-in bridge

Plug-in bridge - FBS 3-8 BU - 3032570

<https://www.phoenixcontact.com/us/products/3032570>



Plug-in bridge, pitch: 8.2 mm, color: blue

# Protective conductor terminal - XTV 6-QUATTRO-PE



1329513

<https://www.phoenixcontact.com/us/products/1329513>

## Plug-in bridge

Plug-in bridge - FBS 4-8 BU - 3032583

<https://www.phoenixcontact.com/us/products/3032583>



Plug-in bridge, pitch: 8.2 mm, color: blue

---

## Plug-in bridge

Plug-in bridge - FBS 5-8 BU - 3032596

<https://www.phoenixcontact.com/us/products/3032596>



Plug-in bridge, pitch: 8.2 mm, color: blue

# Protective conductor terminal - XTV 6-QUATTRO-PE



1329513

<https://www.phoenixcontact.com/us/products/1329513>

## Plug-in bridge

Plug-in bridge - FBS 6-8 BU - 3032677

<https://www.phoenixcontact.com/us/products/3032677>



Plug-in bridge, pitch: 8.2 mm, color: blue

---

## Plug-in bridge

Plug-in bridge - FBS 10-8 BU - 3032606

<https://www.phoenixcontact.com/us/products/3032606>



Plug-in bridge, pitch: 8.2 mm, color: blue

# Protective conductor terminal - XTV 6-QUATTRO-PE



1329513

<https://www.phoenixcontact.com/us/products/1329513>

## Plug-in bridge

Plug-in bridge - FBS 2-8 GY - 3032621

<https://www.phoenixcontact.com/us/products/3032621>



Plug-in bridge, pitch: 8.2 mm, color: gray

---

## Plug-in bridge

Plug-in bridge - FBS 3-8 GY - 3032622

<https://www.phoenixcontact.com/us/products/3032622>



Plug-in bridge, pitch: 8.2 mm, color: gray

# Protective conductor terminal - XTV 6-QUATTRO-PE



1329513

<https://www.phoenixcontact.com/us/products/1329513>

## Plug-in bridge

Plug-in bridge - FBS 4-8 GY - 3032635

<https://www.phoenixcontact.com/us/products/3032635>



Plug-in bridge, pitch: 8.2 mm, color: gray

---

## Plug-in bridge

Plug-in bridge - FBS 5-8 GY - 3032648

<https://www.phoenixcontact.com/us/products/3032648>



Plug-in bridge, pitch: 8.2 mm, color: gray

# Protective conductor terminal - XTV 6-QUATTRO-PE



1329513

<https://www.phoenixcontact.com/us/products/1329513>

## Plug-in bridge

Plug-in bridge - FBS 6-8 GY - 3032664

<https://www.phoenixcontact.com/us/products/3032664>



Plug-in bridge, pitch: 8.2 mm, color: gray

---

## Plug-in bridge

Plug-in bridge - FBS 10-8 GY - 3032651

<https://www.phoenixcontact.com/us/products/3032651>



Plug-in bridge, pitch: 8.2 mm, color: gray

# Protective conductor terminal - XTV 6-QUATTRO-PE



1329513

<https://www.phoenixcontact.com/us/products/1329513>

## Short-circuit connector

Short-circuit connector - FBSRH 2-8 - 3033802

<https://www.phoenixcontact.com/us/products/3033802>



Short-circuit connector, pitch: 8.2 mm, color: red

---

## Short-circuit connector

Short-circuit connector - FBSRH 3-8 - 3033803

<https://www.phoenixcontact.com/us/products/3033803>



Short-circuit connector, pitch: 8.2 mm, color: red

---

# Protective conductor terminal - XTV 6-QUATTRO-PE



1329513

<https://www.phoenixcontact.com/us/products/1329513>

## Short-circuit connector

Short-circuit connector - FBSRH 4-8 - 3033804

<https://www.phoenixcontact.com/us/products/3033804>



Short-circuit connector, pitch: 8.2 mm, color: red

---

## Plug-in bridge

Plug-in bridge - FBSR 2-8 - 3033808

<https://www.phoenixcontact.com/us/products/3033808>



Plug-in bridge, pitch: 8.2 mm, color: red

# Protective conductor terminal - XTV 6-QUATTRO-PE



1329513

<https://www.phoenixcontact.com/us/products/1329513>

## Plug-in bridge

Plug-in bridge - FBSR 3-8 - 3001597

<https://www.phoenixcontact.com/us/products/3001597>



Plug-in bridge, pitch: 8.2 mm, color: red

---

## Plug-in bridge

Plug-in bridge - FBSR 4-8 - 3000585

<https://www.phoenixcontact.com/us/products/3000585>



Plug-in bridge, pitch: 8.2 mm, color: red

# Protective conductor terminal - XTV 6-QUATTRO-PE

1329513

<https://www.phoenixcontact.com/us/products/1329513>

## Plug-in bridge

Plug-in bridge - FBSR 5-8 - 3033809

<https://www.phoenixcontact.com/us/products/3033809>

Plug-in bridge, pitch: 8.2 mm, color: red



---

## Plug-in bridge

Plug-in bridge - FBSR 10-8 - 3001599

<https://www.phoenixcontact.com/us/products/3001599>

Plug-in bridge, pitch: 8.2 mm, color: red



# Protective conductor terminal - XTV 6-QUATTRO-PE



1329513

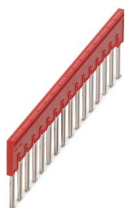
<https://www.phoenixcontact.com/us/products/1329513>

## Plug-in bridge

Plug-in bridge - FBSR 16-8 - 3033816

<https://www.phoenixcontact.com/us/products/3033816>

Plug-in bridge, pitch: 8.2 mm, color: red



---

## Switching jumper

Switching jumper - SB-MER 2-8 - 3000587

<https://www.phoenixcontact.com/us/products/3000587>

Switching jumper, pitch: 8.2 mm, color: gray/orange



# Protective conductor terminal - XTV 6-QUATTRO-PE



1329513

<https://www.phoenixcontact.com/us/products/1329513>

## Switching jumper

Switching jumper - SB-MER 3-8 - 3000588

<https://www.phoenixcontact.com/us/products/3000588>



Switching jumper, pitch: 8.2 mm, color: gray/orange

---

## Switching jumper

Switching jumper - SB-MER 4-8 - 3000589

<https://www.phoenixcontact.com/us/products/3000589>



Switching jumper, pitch: 8.2 mm, color: gray/orange

# Protective conductor terminal - XTV 6-QUATTRO-PE

1329513

<https://www.phoenixcontact.com/us/products/1329513>


## Reducing bridge

Reducing bridge - RB ST 6-(2,5/4) - 3030860

<https://www.phoenixcontact.com/us/products/3030860>



Reducing bridge, pitch: 9 mm, color: red

 Max. current carrying capacity: 35 A

---


## Reducing bridge

Reducing bridge - RB 16-6 - 3047072

<https://www.phoenixcontact.com/us/products/3047072>



Reducing bridge, pitch: 12.2 mm, color: red

 Max. current carrying capacity: 37 A

# Protective conductor terminal - XTV 6-QUATTRO-PE



1329513

<https://www.phoenixcontact.com/us/products/1329513>

## End cover

End cover - D-XTV 6-QUATTRO - 1329517

<https://www.phoenixcontact.com/us/products/1329517>

End cover, length: 90.6 mm, width: 2.2 mm, height: 51.4 mm, color: gray



---

## Screwdriver

Screwdriver - SZF 2-0,8X4,0 - 1204520

<https://www.phoenixcontact.com/us/products/1204520>

Actuation tool, for ST terminal blocks, also suitable for use as a bladed screwdriver, size: 0.8 x 4.0 x 100 mm, 2-component grip, with non-slip grip



# Protective conductor terminal - XTV 6-QUATTRO-PE



1329513

<https://www.phoenixcontact.com/us/products/1329513>

## Ferrule

Ferrule - AI 1,5 -10 BK - 3200195

<https://www.phoenixcontact.com/us/products/3200195>



Ferrule, sleeve length: 10 mm, length: 16 mm, color: black

---

## Ferrule

Ferrule - AI 1,5 -10 BK-1000 - 3203134

<https://www.phoenixcontact.com/us/products/3203134>



Ferrule, sleeve length: 10 mm, length: 18 mm, color: black

# Protective conductor terminal - XTV 6-QUATTRO-PE



1329513

<https://www.phoenixcontact.com/us/products/1329513>

## Ferrule

Ferrule - AI 1,5 -12 BK - 3201482

<https://www.phoenixcontact.com/us/products/3201482>



Ferrule, sleeve length: 12 mm, length: 18 mm, color: black

---

## Ferrule

Ferrule - AI 2,5 -10 BU - 3202533

<https://www.phoenixcontact.com/us/products/3202533>



Ferrule, sleeve length: 10 mm, length: 17 mm, color: blue

# Protective conductor terminal - XTV 6-QUATTRO-PE



1329513

<https://www.phoenixcontact.com/us/products/1329513>

## Ferrule

Ferrule - AI 2,5 -10 BU-1000 - 3203147

<https://www.phoenixcontact.com/us/products/3203147>



Ferrule, sleeve length: 10 mm, length: 17 mm, color: blue

---

## Ferrule

Ferrule - AI 2,5 -12 BU - 3200962

<https://www.phoenixcontact.com/us/products/3200962>



Ferrule, sleeve length: 12 mm, length: 18 mm, color: blue

# Protective conductor terminal - XTV 6-QUATTRO-PE



1329513

<https://www.phoenixcontact.com/us/products/1329513>

## Ferrule

Ferrule - Al 4 -10 GY - 3200535

<https://www.phoenixcontact.com/us/products/3200535>



Ferrule, sleeve length: 10 mm, length: 17 mm, color: gray

---

## Ferrule

Ferrule - Al 4 -12 GY - 3200959

<https://www.phoenixcontact.com/us/products/3200959>



Ferrule, sleeve length: 12 mm, length: 20 mm, color: gray

# Protective conductor terminal - XTV 6-QUATTRO-PE

1329513

<https://www.phoenixcontact.com/us/products/1329513>

## Ferrule

Ferrule - Al 6 -12 YE - 3200548

<https://www.phoenixcontact.com/us/products/3200548>

Ferrule, sleeve length: 12 mm, length: 20 mm, color: yellow



---

## DIN rail perforated

DIN rail perforated - NS 35/ 7,5 PERF 2000MM - 0801733

<https://www.phoenixcontact.com/us/products/0801733>

DIN rail perforated, acc. to EN 60715, material: Steel, galvanized, passivated with a thick layer, Standard profile, color: silver, Pack of 25 (50 m)



# Protective conductor terminal - XTV 6-QUATTRO-PE



1329513

<https://www.phoenixcontact.com/us/products/1329513>

## DIN rail, unperforated

DIN rail, unperforated - NS 35/ 7,5 UNPERF 2000MM - 0801681

<https://www.phoenixcontact.com/us/products/0801681>



DIN rail, unperforated, acc. to EN 60715, material: Steel, galvanized, passivated with a thick layer, Standard profile, color: silver, Pack of 25 (50 m)

---

## DIN rail perforated

DIN rail perforated - NS 35/ 7,5 WH PERF 2000MM - 1204119

<https://www.phoenixcontact.com/us/products/1204119>



DIN rail perforated, acc. to EN 60715, material: Steel, Galvanized, white passivated, Standard profile, color: silver, Pack of 25 (50 m)

# Protective conductor terminal - XTV 6-QUATTRO-PE

1329513

<https://www.phoenixcontact.com/us/products/1329513>

## DIN rail, unperforated

DIN rail, unperforated - NS 35/ 7,5 WH UNPERF 2000MM-VPE 10 - 1204122

<https://www.phoenixcontact.com/us/products/1204122>



DIN rail, unperforated, acc. to EN 60715, material: Steel, Galvanized, white passivated, Standard profile, color: silver, Pack of 10 (20 m)

---

## DIN rail, unperforated

DIN rail, unperforated - NS 35/ 7,5 AL UNPERF 2000MM - 0801704

<https://www.phoenixcontact.com/us/products/0801704>



DIN rail, unperforated, acc. to EN 60715, material: Aluminum, uncoated, Standard profile, color: silver, Pack of 25 (50 m)

# Protective conductor terminal - XTV 6-QUATTRO-PE



1329513

<https://www.phoenixcontact.com/us/products/1329513>

## DIN rail perforated

DIN rail perforated - NS 35/ 7,5 ZN PERF 2000MM - 1206421

<https://www.phoenixcontact.com/us/products/1206421>



DIN rail perforated, acc. to EN 60715, material: Steel, galvanized, Standard profile, color: silver, Pack of 25 (50 m)

---

## DIN rail, unperforated

DIN rail, unperforated - NS 35/ 7,5 ZN UNPERF 2000MM - 1206434

<https://www.phoenixcontact.com/us/products/1206434>



DIN rail, unperforated, acc. to EN 60715, material: Steel, galvanized, Standard profile, color: silver, Pack of 25 (50 m)

# Protective conductor terminal - XTV 6-QUATTRO-PE



1329513

<https://www.phoenixcontact.com/us/products/1329513>

## DIN rail, unperforated

DIN rail, unperforated - NS 35/ 7,5 CU UNPERF 2000MM-VPE 10 - 0801762

<https://www.phoenixcontact.com/us/products/0801762>



DIN rail, unperforated, acc. to EN 60715, material: Copper, uncoated, Standard profile, color: copper-colored, Pack of 10 (20 m)

---

## End cap

End cap - NS 35/ 7,5 CAP - 1206560

<https://www.phoenixcontact.com/us/products/1206560>

DIN rail end piece, for DIN rail NS 35/7.5



# Protective conductor terminal - XTV 6-QUATTRO-PE



1329513

<https://www.phoenixcontact.com/us/products/1329513>

## DIN rail perforated

DIN rail perforated - NS 35/15 PERF 2000MM - 1201730

<https://www.phoenixcontact.com/us/products/1201730>



DIN rail perforated, similar to EN 60715, material: Steel, galvanized, passivated with a thick layer, Standard profile, color: silver, Pack of 25 (50 m)

---

## DIN rail, unperforated

DIN rail, unperforated - NS 35/15 UNPERF 2000MM - 1201714

<https://www.phoenixcontact.com/us/products/1201714>



DIN rail, unperforated, similar to EN 60715, material: Steel, galvanized, passivated with a thick layer, Standard profile, color: silver, Pack of 25 (50 m)

# Protective conductor terminal - XTV 6-QUATTRO-PE



1329513

<https://www.phoenixcontact.com/us/products/1329513>

## DIN rail perforated

DIN rail perforated - NS 35/15 WH PERF 2000MM - 0806602

<https://www.phoenixcontact.com/us/products/0806602>



DIN rail perforated, similar to EN 60715, material: Steel, Galvanized, white passivated, Standard profile, color: white, Pack of 25 (50 m)

---

## DIN rail, unperforated

DIN rail, unperforated - NS 35/15 WH UNPERF 2000MM-VPE 10 - 1204135

<https://www.phoenixcontact.com/us/products/1204135>



DIN rail, unperforated, similar to EN 60715, material: Steel, Galvanized, white passivated, Standard profile, color: silver, Pack of 10 (20 m)

# Protective conductor terminal - XTV 6-QUATTRO-PE



1329513

<https://www.phoenixcontact.com/us/products/1329513>

## DIN rail, unperforated

DIN rail, unperforated - NS 35/15 AL UNPERF 2000MM - 1201756

<https://www.phoenixcontact.com/us/products/1201756>



DIN rail, unperforated, similar to EN 60715, material: Aluminum, uncoated, Standard profile, color: silver

---

## DIN rail perforated

DIN rail perforated - NS 35/15 ZN PERF 2000MM - 1206599

<https://www.phoenixcontact.com/us/products/1206599>



DIN rail perforated, similar to EN 60715, material: Steel, galvanized, Standard profile, color: silver, Pack of 25 (50 m)

# Protective conductor terminal - XTV 6-QUATTRO-PE

1329513

<https://www.phoenixcontact.com/us/products/1329513>

## DIN rail, unperforated

DIN rail, unperforated - NS 35/15 ZN UNPERF 2000MM - 1206586

<https://www.phoenixcontact.com/us/products/1206586>



DIN rail, unperforated, similar to EN 60715, material: Steel, galvanized, Standard profile, color: silver, Pack of 25 (50 m)

---

## DIN rail, unperforated

DIN rail, unperforated - NS 35/15 CU UNPERF 2000MM-VPE 10 - 1201895

<https://www.phoenixcontact.com/us/products/1201895>



DIN rail, unperforated, similar to EN 60715, material: Copper, uncoated, Standard profile, color: copper-colored, Pack of 10 (20 m)

# Protective conductor terminal - XTV 6-QUATTRO-PE



1329513

<https://www.phoenixcontact.com/us/products/1329513>

## End cap

End cap - NS 35/15 CAP - 1206573

<https://www.phoenixcontact.com/us/products/1206573>

DIN rail end piece, for DIN rail NS 35/15



---

## DIN rail, unperforated

DIN rail, unperforated - NS 35/15-2,3 UNPERF 2000MM-VPE 10 - 1201798

<https://www.phoenixcontact.com/us/products/1201798>



DIN rail, unperforated, acc. to EN 60715, material: Steel, galvanized, passivated with a thick layer, Standard profile 2.3 mm, color: silver, Pack of 10 (20 m)

# Protective conductor terminal - XTV 6-QUATTRO-PE



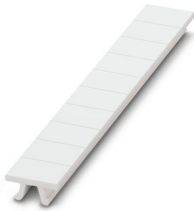
1329513

<https://www.phoenixcontact.com/us/products/1329513>

## Zack marker strip

Zack marker strip - ZB 8:UNBEDRUCKT - 1052002

<https://www.phoenixcontact.com/us/products/1052002>



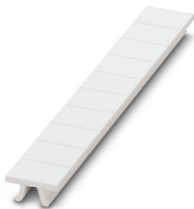
Zack marker strip, Strip, white, unlabeled, can be labeled with: CMS-P1-PLOTTER, PLOTMARK, mounting type: snapped, for terminal block width: 8.2 mm, lettering field size: 10.5 x 8.15 mm, Number of individual labels: 10

---

## Zack marker strip

Zack marker strip - ZB 8 CUS - 0825011

<https://www.phoenixcontact.com/us/products/0825011>



Zack marker strip, can be ordered: Strip, white, labeled according to customer specifications, mounting type: snap into tall marker groove, for terminal block width: 8.2 mm, lettering field size: 10.5 x 8.15 mm, Number of individual labels: 10

# Protective conductor terminal - XTV 6-QUATTRO-PE



1329513

<https://www.phoenixcontact.com/us/products/1329513>

## Marker for terminal blocks

Marker for terminal blocks - UC-TM 8 - 0818072

<https://www.phoenixcontact.com/us/products/0818072>



Marker for terminal blocks, Sheet, white, unlabeled, can be labeled with: BLUEMARK ID COLOR, BLUEMARK ID, BLUEMARK CLED, PLOTMARK, CMS-P1-PLOTTER, mounting type: snapped, for terminal block width: 8.2 mm, lettering field size: 7.6 x 10.5 mm, Number of individual labels: 56

---

## Marker for terminal blocks

Marker for terminal blocks - UC-TM 8 CUS - 0824597

<https://www.phoenixcontact.com/us/products/0824597>



Marker for terminal blocks, can be ordered: by sheet, white, labeled according to customer specifications, mounting type: snap into tall marker groove, for terminal block width: 8.2 mm, lettering field size: 7.6 x 10.5 mm, Number of individual labels: 56

# Protective conductor terminal - XTV 6-QUATTRO-PE



1329513

<https://www.phoenixcontact.com/us/products/1329513>

## Marker for terminal blocks

Marker for terminal blocks - UCT-TM 8 - 0828740

<https://www.phoenixcontact.com/us/products/0828740>



Marker for terminal blocks, Sheet, white, unlabeled, can be labeled with: TOPMARK NEO, TOPMARK LASER, BLUEMARK ID COLOR, BLUEMARK ID, BLUEMARK CLED, THERMOMARK PRIME, THERMOMARK CARD 2.0, THERMOMARK CARD, mounting type: snapped, for terminal block width: 8.2 mm, lettering field size: 7.6 x 10.5 mm, Number of individual labels: 42

---

## Marker for terminal blocks

Marker for terminal blocks - UCT-TM 8 CUS - 0829616

<https://www.phoenixcontact.com/us/products/0829616>



Marker for terminal blocks, can be ordered: by sheet, white, labeled according to customer specifications, mounting type: snap into tall marker groove, for terminal block width: 8.2 mm, lettering field size: 7.6 x 10.5 mm, Number of individual labels: 42

# Protective conductor terminal - XTV 6-QUATTRO-PE



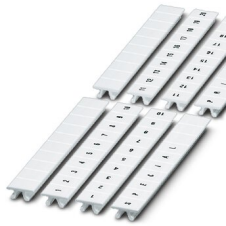
1329513

<https://www.phoenixcontact.com/us/products/1329513>

## Zack marker strip

Zack marker strip - ZB 8,LGS:FORTL.ZAHLEN - 1052015

<https://www.phoenixcontact.com/us/products/1052015>



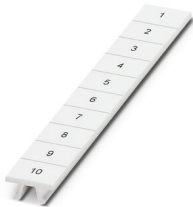
Zack marker strip, Strip, white, labeled, can be labeled with: CMS-P1-PLOTTER, printed horizontally: consecutive numbers 1 ... 10, 11 ... 20, etc. up to 91 ... 100, mounting type: snapped, for terminal block width: 8.2 mm, lettering field size: 10. 5 x 8.15 mm, Number of individual labels: 10

---

## Zack marker strip

Zack marker strip - ZB 8,QR:FORTL.ZAHLEN - 1052028

<https://www.phoenixcontact.com/us/products/1052028>



Zack marker strip, Strip, white, labeled, can be labeled with: CMS-P1-PLOTTER, Printed vertically: consecutive numbers 1 ... 10, 11 ... 20, etc. up to 91 ... 100, mounting type: snapped, for terminal block width: 8.2 mm, lettering field size: 10. 5 x 8.15 mm, Number of individual labels: 10

# Protective conductor terminal - XTV 6-QUATTRO-PE



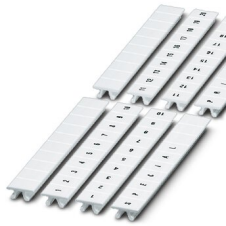
1329513

<https://www.phoenixcontact.com/us/products/1329513>

## Marker for terminal blocks

Marker for terminal blocks - ZB 8,LGS:L1-N,PE - 1052413

<https://www.phoenixcontact.com/us/products/1052413>



Marker for terminal blocks, Strip, white, labeled, can be labeled with: CMS-P1-PLOTTER, horizontal: L1, L2, L3, N, PE, L1, L2, L3, N, PE, mounting type: snapped, for terminal block width: 8.2 mm, lettering field size: 10.5 x 8.15 mm, Number of individual labels: 10

---

## Zack Marker strip, flat

Zack Marker strip, flat - ZBF 8:UNBEDRUCKT - 0808781

<https://www.phoenixcontact.com/us/products/0808781>



Zack Marker strip, flat, Strip, white, unlabeled, can be labeled with: PLOTMARK, CMS-P1-PLOTTER, mounting type: snapped, for terminal block width: 8 mm, lettering field size: 5.15 x 8.15 mm, Number of individual labels: 10

# Protective conductor terminal - XTV 6-QUATTRO-PE

1329513

<https://www.phoenixcontact.com/us/products/1329513>

## Zack Marker strip, flat

Zack Marker strip, flat - ZBF 8 CUS - 0825030

<https://www.phoenixcontact.com/us/products/0825030>



Zack Marker strip, flat, can be ordered: Strip, white, labeled according to customer specifications, mounting type: snap into flat marker groove, for terminal block width: 8 mm, lettering field size: 5.15 x 8.15 mm, Number of individual labels: 10

---

## Zack Marker strip, flat

Zack Marker strip, flat - ZBF 8,LGS:FORTL.ZAHLEN - 0808804

<https://www.phoenixcontact.com/us/products/0808804>



Zack Marker strip, flat, Strip, white, labeled, printed horizontally: consecutive numbers 1 ... 10, 11 ... 20, etc. up to 101 ... 110, mounting type: snapped, for terminal block width: 8 mm, lettering field size: 5.15 x 8.15 mm, Number of individual labels: 10

# Protective conductor terminal - XTV 6-QUATTRO-PE



1329513

<https://www.phoenixcontact.com/us/products/1329513>

## Marker for terminal blocks

Marker for terminal blocks - UC-TMF 8 - 0818137

<https://www.phoenixcontact.com/us/products/0818137>



Marker for terminal blocks, Sheet, white, unlabeled, can be labeled with: BLUEMARK ID COLOR, BLUEMARK ID, BLUEMARK CLED, PLOTMARK, CMS-P1-PLOTTER, mounting type: snapped, for terminal block width: 8.2 mm, lettering field size: 7.6 x 5.1 mm, Number of individual labels: 56

---

## Marker for terminal blocks

Marker for terminal blocks - UC-TMF 8 CUS - 0824654

<https://www.phoenixcontact.com/us/products/0824654>



Marker for terminal blocks, can be ordered: by sheet, white, labeled according to customer specifications, mounting type: snap into flat marker groove, for terminal block width: 8.2 mm, lettering field size: 7.6 x 5.1 mm, Number of individual labels: 56

# Protective conductor terminal - XTV 6-QUATTRO-PE



1329513

<https://www.phoenixcontact.com/us/products/1329513>

## Marker for terminal blocks

Marker for terminal blocks - UCT-TMF 8 - 0828748

<https://www.phoenixcontact.com/us/products/0828748>



Marker for terminal blocks, Sheet, white, unlabeled, can be labeled with: TOPMARK NEO, TOPMARK LASER, BLUEMARK ID COLOR, BLUEMARK ID, BLUEMARK CLED, THERMOMARK PRIME, THERMOMARK CARD 2.0, THERMOMARK CARD, mounting type: snapped, for terminal block width: 8.2 mm, lettering field size: 7.4 x 4.7 mm, Number of individual labels: 42

---

## Marker for terminal blocks

Marker for terminal blocks - UCT-TMF 8 CUS - 0829672

<https://www.phoenixcontact.com/us/products/0829672>



Marker for terminal blocks, can be ordered: by sheet, white, labeled according to customer specifications, mounting type: snap into flat marker groove, for terminal block width: 8.2 mm, lettering field size: 7.4 x 4.7 mm, Number of individual labels: 42

# Protective conductor terminal - XTV 6-QUATTRO-PE



1329513

<https://www.phoenixcontact.com/us/products/1329513>

## Test plugs

Test plugs - MPS-MT - 0201744

<https://www.phoenixcontact.com/us/products/0201744>



Test plugs, with solder connection up to 1 mm<sup>2</sup> conductor cross section, color: gray

---

## Insulating sleeve

Insulating sleeve - MPS-IH WH - 0201663

<https://www.phoenixcontact.com/us/products/0201663>

Insulating sleeve, color: white



# Protective conductor terminal - XTV 6-QUATTRO-PE



1329513

<https://www.phoenixcontact.com/us/products/1329513>

## Insulating sleeve

Insulating sleeve - MPS-IH RD - 0201676

<https://www.phoenixcontact.com/us/products/0201676>

Insulating sleeve, color: red



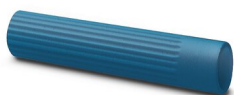
---

## Insulating sleeve

Insulating sleeve - MPS-IH BU - 0201689

<https://www.phoenixcontact.com/us/products/0201689>

Insulating sleeve, color: blue



# Protective conductor terminal - XTV 6-QUATTRO-PE



1329513

<https://www.phoenixcontact.com/us/products/1329513>

## Insulating sleeve

Insulating sleeve - MPS-IH YE - 0201692

<https://www.phoenixcontact.com/us/products/0201692>

Insulating sleeve, color: yellow



---

## Insulating sleeve

Insulating sleeve - MPS-IH GN - 0201702

<https://www.phoenixcontact.com/us/products/0201702>

Insulating sleeve, color: green



# Protective conductor terminal - XTV 6-QUATTRO-PE



1329513

<https://www.phoenixcontact.com/us/products/1329513>

## Insulating sleeve

Insulating sleeve - MPS-IH GY - 0201728

<https://www.phoenixcontact.com/us/products/0201728>

Insulating sleeve, color: gray



---

## Insulating sleeve

Insulating sleeve - MPS-IH BK - 0201731

<https://www.phoenixcontact.com/us/products/0201731>

Insulating sleeve, color: black



# Protective conductor terminal - XTV 6-QUATTRO-PE



1329513

<https://www.phoenixcontact.com/us/products/1329513>

## Test adapter

Test adapter - PAI-4-FIX BU - 3032729

<https://www.phoenixcontact.com/us/products/3032729>



Test adapter, Touch proof against unintentional direct contact according to DIN EN 50274 when plugged in, for 4 mm test plug and terminal blocks with 8.2 mm pitch, color: blue

---

## Test adapter

Test adapter - PAI-4-FIX OG - 3034455

<https://www.phoenixcontact.com/us/products/3034455>



4 mm test adapter, for terminal blocks with 8.2 mm pitch

# Protective conductor terminal - XTV 6-QUATTRO-PE



1329513

<https://www.phoenixcontact.com/us/products/1329513>

## Test adapter

Test adapter - PAI-4-FIX YE - 3032745

<https://www.phoenixcontact.com/us/products/3032745>



Test adapter, Touch proof against unintentional direct contact according to DIN EN 50274 when plugged in, for 4 mm test plug and terminal blocks with 8.2 mm pitch, color: yellow

---

## Test adapter

Test adapter - PAI-4-FIX RD - 3032732

<https://www.phoenixcontact.com/us/products/3032732>



Test adapter, Touch proof against unintentional direct contact according to DIN EN 50274 when plugged in, for 4 mm test plug and terminal blocks with 8.2 mm pitch, color: red

# Protective conductor terminal - XTV 6-QUATTRO-PE



1329513

<https://www.phoenixcontact.com/us/products/1329513>

## Test adapter

Test adapter - PAI-4-FIX GN - 3032758

<https://www.phoenixcontact.com/us/products/3032758>



Test adapter, Touch proof against unintentional direct contact according to DIN EN 50274 when plugged in, for 4 mm test plug and terminal blocks with 8.2 mm pitch, color: green

---

## Test adapter

Test adapter - PAI-4-FIX BK - 3032774

<https://www.phoenixcontact.com/us/products/3032774>



Test adapter, Touch proof against unintentional direct contact according to DIN EN 50274 when plugged in, for 4 mm test plug and terminal blocks with 8.2 mm pitch, color: black

# Protective conductor terminal - XTV 6-QUATTRO-PE



1329513

<https://www.phoenixcontact.com/us/products/1329513>

## Test adapter

Test adapter - PAI-4-FIX GY - 3032790

<https://www.phoenixcontact.com/us/products/3032790>



Test adapter, Touch proof against unintentional direct contact according to DIN EN 50274 when plugged in, for 4 mm test plug and terminal blocks with 8.2 mm pitch, color: gray

---

## Test adapter

Test adapter - PAI-4-FIX VT - 3032761

<https://www.phoenixcontact.com/us/products/3032761>



Test adapter, Touch proof against unintentional direct contact according to DIN EN 50274 when plugged in, for 4 mm test plug and terminal blocks with 4.2 mm .. 8.2 mm pitch, color: violet

# Protective conductor terminal - XTV 6-QUATTRO-PE



1329513

<https://www.phoenixcontact.com/us/products/1329513>

## Test adapter

Test adapter - PAI-4-FIX BN - 3032787

<https://www.phoenixcontact.com/us/products/3032787>



Test adapter, Touch proof against unintentional direct contact according to DIN EN 50274 when plugged in, for 4 mm test plug and terminal blocks with 8.2 mm pitch, color: brown

---

## Test adapter

Test adapter - PAI-4-FIX WH - 3032797

<https://www.phoenixcontact.com/us/products/3032797>



4 mm test adapter, for terminal blocks with 8.2 mm pitch

# Protective conductor terminal - XTV 6-QUATTRO-PE



1329513

<https://www.phoenixcontact.com/us/products/1329513>

## Test adapter

Test adapter - PAIS-4-FIX GY - 3032791

<https://www.phoenixcontact.com/us/products/3032791>



Test adapter, Touch proof against unintentional direct contact according to DIN EN 50274 when plugged in, for 4 mm test plug and terminal blocks with 5.2 mm, 6.2 mm, and 8.2 mm pitch, color: gray

---

## Test adapter

Test adapter - PAIS-4-FIX BK - 3032792

<https://www.phoenixcontact.com/us/products/3032792>



Test adapter, Touch proof against unintentional direct contact according to DIN EN 50274 when plugged in, for 4 mm test plug and terminal blocks with 5.2 mm, 6.2 mm, and 8.2 mm pitch, color: black

# Protective conductor terminal - XTV 6-QUATTRO-PE



1329513

<https://www.phoenixcontact.com/us/products/1329513>

## Test adapter

Test adapter - PAIS-4-FIX RD - 3032793

<https://www.phoenixcontact.com/us/products/3032793>



Test adapter, Do not plug in while the power is connected, for 4 mm test plug and terminal blocks with 5.2 mm, 6.2 mm, and 8.2 mm pitch, color: red

---

## Test adapter

Test adapter - PAIS-4-FIX BU - 3032798

<https://www.phoenixcontact.com/us/products/3032798>



Test adapter, Touch proof against unintentional direct contact according to DIN EN 50274 when plugged in, for 4 mm test plug and terminal blocks with 5.2 mm, 6.2 mm, and 8.2 mm pitch, color: blue

# Protective conductor terminal - XTV 6-QUATTRO-PE



1329513

<https://www.phoenixcontact.com/us/products/1329513>

## Test adapter

Test adapter - PAIS-4-FIX YE - 3032799

<https://www.phoenixcontact.com/us/products/3032799>



Test adapter, Touch proof against unintentional direct contact according to DIN EN 50274 when plugged in, for 4 mm test plug and terminal blocks with 5.2 mm, 6.2 mm, and 8.2 mm pitch, color: yellow

---

## Test adapter

Test adapter - PAIS-4-FIX GN - 3032801

<https://www.phoenixcontact.com/us/products/3032801>



Test adapter, Touch proof against unintentional direct contact according to DIN EN 50274 when plugged in, for 4 mm test plug and terminal blocks with 5.2 mm, 6.2 mm, and 8.2 mm pitch, color: green

# Protective conductor terminal - XTV 6-QUATTRO-PE



1329513

<https://www.phoenixcontact.com/us/products/1329513>

## Test adapter

Test adapter - PAIS-4-FIX VT - 3032802

<https://www.phoenixcontact.com/us/products/3032802>



Test adapter, Touch proof against unintentional direct contact according to DIN EN 50274 when plugged in, for 4 mm test plug and terminal blocks with 5.2 mm, 6.2 mm, and 8.2 mm pitch, color: violet

---

## Test plugs

Test plugs - PS-8 - 3031005

<https://www.phoenixcontact.com/us/products/3031005>



Test plugs, Modular test plug, color: red

# Protective conductor terminal - XTV 6-QUATTRO-PE



1329513

<https://www.phoenixcontact.com/us/products/1329513>

## Spacer plate

Spacer plate - DP PS-8 - 3036741

<https://www.phoenixcontact.com/us/products/3036741>



Spacer plate, length: 22.4 mm, width: 8.2 mm, height: 29 mm, number of positions: 1, color: red

---

## Test plugs

Test plugs - PS-8/2,3MM RD - 3048564

<https://www.phoenixcontact.com/us/products/3048564>



Test plugs, color: red

# Protective conductor terminal - XTV 6-QUATTRO-PE



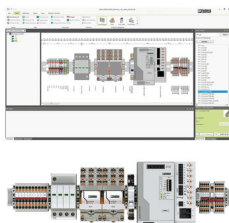
1329513

<https://www.phoenixcontact.com/us/products/1329513>

## Software

Software - PROJECT COMPLETE - 1050453

<https://www.phoenixcontact.com/us/products/1050453>



Intuitive planning and marking software for configuring terminal strips and for professional marking of marking materials for terminal blocks, conductors, cables, devices, and systems. The software is available for download

---

## End clamp

End clamp - E/UK - 1201442

<https://www.phoenixcontact.com/us/products/1201442>



End clamp, material: PA, color: gray, Mounting on a DIN rail NS 32 or NS 35

# Protective conductor terminal - XTV 6-QUATTRO-PE



1329513

<https://www.phoenixcontact.com/us/products/1329513>

## End clamp

End clamp - E/UK 1 - 1201413

<https://www.phoenixcontact.com/us/products/1201413>



End clamps, for supporting the ends of double-level and three-level terminal blocks, width: 10 mm, color: gray

---

## Marker for terminal blocks

Marker for terminal blocks - TMT (EX9,5)R - 0828295

<https://www.phoenixcontact.com/us/products/0828295>



Marker for terminal blocks, Roll, white, unlabeled, can be labeled with: THERMOMARK ROLL 2.0, THERMOMARK ROLL, THERMOMARK ROLL X1, THERMOMARK ROLLMASTER 300/600, THERMOMARK X1.2, mounting type: snapped, snap into tall marker groove, lettering field size: 9.5 x 50000 mm, Number of individual labels: 1

# Protective conductor terminal - XTV 6-QUATTRO-PE



1329513

<https://www.phoenixcontact.com/us/products/1329513>

## Marker for terminal blocks

Marker for terminal blocks - US-TM 100 - 0829255

<https://www.phoenixcontact.com/us/products/0829255>

Marker for terminal blocks, Card, white, unlabeled, can be labeled with: BLUEMARK ID COLOR, BLUEMARK ID, THERMOMARK PRIME, THERMOMARK CARD 2.0, THERMOMARK CARD, mounting type: snapped, lettering field size: 104 x 9.8 mm, Number of individual labels: 13



---

## End clamp

End clamp - CLIPFIX 35 - 3022218

<https://www.phoenixcontact.com/us/products/3022218>

Quick mounting end clamp for NS 35/7,5 DIN rail or NS 35/15 DIN rail, with marking option, width: 9.5 mm, color: gray



# Protective conductor terminal - XTV 6-QUATTRO-PE



1329513

<https://www.phoenixcontact.com/us/products/1329513>

## End clamp

End clamp - CLIPFIX 35-5 - 3022276

<https://www.phoenixcontact.com/us/products/3022276>



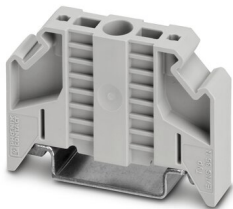
Quick mounting end clamp for NS 35/7,5 DIN rail or NS 35/15 DIN rail, with marking option, with parking option for FBS...5, FBS...6, KSS 5, KSS 6, width: 5.15 mm, color: gray

---

## End clamp

End clamp - E/NS 35 N - 0800886

<https://www.phoenixcontact.com/us/products/0800886>



End clamp, width: 9.5 mm, color: gray

---

Phoenix Contact 2022 © - all rights reserved  
<https://www.phoenixcontact.com>

Phoenix Contact USA  
586 Fulling Mill Road  
Middletown, PA 17057, United States  
(+717) 944-1300  
[info@phoenixcon.com](mailto:info@phoenixcon.com)