

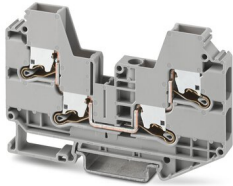
Feed-through terminal block - XTV 6-QUATTRO



1329511

<https://www.phoenixcontact.com/us/products/1329511>

Please be informed that the data shown in this PDF document is generated from our Online Catalog. Please find the complete data in the user documentation. Our General Terms of Use for Downloads are valid.



Feed-through terminal block, nom. voltage: 1000 V, nominal current: 41 A, connection method: Push-X-connection, Rated cross section: 6 mm², cross section: 0.5 mm² - 10 mm², mounting type: NS 35/7,5, NS 35/15, color: gray

Your advantages

- Fast, powerless conductor connection for all conductor types with the pretensioned contact spring
- A high level of flexibility when inserting conductors enables conductors with or without ferrules to be connected easily
- Clear conductor connection with the lateral connection direction and the clear pusher position
- Easy procurement of information – the QR code on the terminal block provides all important information about the product
- Terminal blocks with Push-X connection are part of the COMPLETE line system

Commercial Data

Item number	1329511
Packing unit	1 pc
Minimum order quantity	50 pc
Sales Key	B02
Product Key	BE2513
GTIN	4063151624422
Weight per Piece (including packing)	31.13 g
Weight per Piece (excluding packing)	31.13 g
Customs tariff number	85369010
Country of origin	CN

Feed-through terminal block - XTV 6-QUATTRO



1329511

<https://www.phoenixcontact.com/us/products/1329511>

Technical Data

Notes

General

Note	The max. load current must not be exceeded by the total current of all connected conductors.
------	--

Product properties

Product type	Feed-through terminal block
Number of positions	1
Area of application	Railway industry
	Machine building
	Plant engineering
Number of connections	4
Number of rows	1

Insulation characteristics

Overvoltage category	III
Degree of pollution	3

Electrical properties

Rated surge voltage	8 kV
Maximum power dissipation for nominal condition	1.31 W

Connection data

Number of connections per level	4
Nominal cross section	6 mm ²
Stripping length	10 mm ... 12 mm
Internal cylindrical gage	A5
	B4
Conductor cross section solid	0.5 mm ² ... 10 mm ²
Cross section AWG	20 ... 8 (converted acc. to IEC)
Conductor cross section flexible	1.5 mm ² ... 10 mm ²
Conductor cross section, flexible [AWG]	14 ... 8 (converted acc. to IEC)
Flexible conductor cross section flexible (ferrule, w/o plastic sleeve)	1.5 mm ² ... 6 mm ²
Flexible conductor cross section (ferrule with plastic sleeve)	1.5 mm ² ... 6 mm ²
2 conductors with the same cross section, flexible, with TWIN ferrule with plastic sleeve	1.5 mm ² ... 4 mm ²
Nominal current	41 A
Maximum load current	52 A (With 10 mm ² conductor cross-section, rigid)
Nominal voltage	1000 V
Nominal cross section	6 mm ²

Dimensions

Feed-through terminal block - XTV 6-QUATTRO



1329511

<https://www.phoenixcontact.com/us/products/1329511>

Width	8.2 mm
End cover width	2.2 mm
Height	57.6 mm
Height NS 35/15	66.6 mm
Height NS 35/7,5	59.1 mm
Length	90.6 mm

Material specifications

Color	gray
Flammability rating according to UL 94	V0
Insulating material group	I
Insulating material	PA
Static insulating material application in cold	-60 °C
Relative insulation material temperature index (Elec., UL 746 B)	130 °C
Fire protection for rail vehicles (DIN EN 45545-2) R22	HL 1 - HL 3
Fire protection for rail vehicles (DIN EN 45545-2) R23	HL 1 - HL 3
Fire protection for rail vehicles (DIN EN 45545-2) R24	HL 1 - HL 3
Fire protection for rail vehicles (DIN EN 45545-2) R26	HL 1 - HL 3
Surface flammability NFPA 130 (ASTM E 162)	passed
Specific optical density of smoke NFPA 130 (ASTM E 662)	passed
Smoke gas toxicity NFPA 130 (SMP 800C)	passed

Mechanical properties

Mechanical data

Open side panel	Yes
-----------------	-----

Environmental and real-life conditions

Needle-flame test

Time of exposure	30 s
------------------	------

Oscillation/broadband noise

Specification	DIN EN 50155 (VDE 0115-200):2018-05
Spectrum	Service life test category 2, bogie-mounted
Frequency	$f_1 = 5 \text{ Hz}$ to $f_2 = 250 \text{ Hz}$
ASD level	6.12 (m/s ²)/Hz
Acceleration	3.12g
Test duration per axis	5 h
Test directions	X-, Y- and Z-axis

Shocks

Specification	DIN EN 50155 (VDE 0115-200):2018-05
Pulse shape	Half-sine
Acceleration	30g
Shock duration	18 ms

Feed-through terminal block - XTV 6-QUATTRO



1329511

<https://www.phoenixcontact.com/us/products/1329511>

Number of shocks per direction	3
Test directions	X-, Y- and Z-axis (pos. and neg.)

Ambient conditions

Ambient temperature (operation)	-60 °C ... 105 °C (max. short-term operating temperature RTI Elec.)
Ambient temperature (storage/transport)	-25 °C ... 60 °C (for a short time, not exceeding 24 h, -60 °C to +70 °C)
Ambient temperature (assembly)	-5 °C ... 70 °C
Ambient temperature (actuation)	-5 °C ... 70 °C
Permissible humidity (storage/transport)	30 % ... 70 %

Standards and regulations

Connection in acc. with standard	IEC 60947-7-1
----------------------------------	---------------

Mounting

Mounting type	NS 35/7,5
	NS 35/15

Feed-through terminal block - XTV 6-QUATTRO



1329511

<https://www.phoenixcontact.com/us/products/1329511>

Drawings

Circuit diagram




Feed-through terminal block - XTV 6-QUATTRO




1329511

<https://www.phoenixcontact.com/us/products/1329511>

Approvals

 CSA Approval ID: 13631				
	Nominal Voltage U_N	Nominal Current I_N	Cross Section AWG	Cross Section mm^2
Use group B				
	600 V	40 A	14 - 8	-
Use group C				
	600 V	40 A	14 - 8	-

 cULus Recognized Approval ID: E60425				
	Nominal Voltage U_N	Nominal Current I_N	Cross Section AWG	Cross Section mm^2
Use group B				
	600 V	40 A	14 - 8	-
Use group C				
	600 V	40 A	14 - 8	-
Use group F				
	1000 V	40 A	14 - 8	-

Feed-through terminal block - XTV 6-QUATTRO



1329511

<https://www.phoenixcontact.com/us/products/1329511>

Classifications

ECLASS

ECLASS-11.0

27141120

ETIM

ETIM 8.0

EC000897

UNSPSC

UNSPSC 21.0

39121400

Feed-through terminal block - XTV 6-QUATTRO



1329511

<https://www.phoenixcontact.com/us/products/1329511>

Accessories



Note: Applying some accessories below might limit this product.

Plug-in bridge

Plug-in bridge - FBS 2-8 - 3030284

<https://www.phoenixcontact.com/us/products/3030284>



Plug-in bridge, pitch: 8.2 mm, color: red

Plug-in bridge

Plug-in bridge - FBS 3-8 - 3030297

<https://www.phoenixcontact.com/us/products/3030297>



Plug-in bridge, pitch: 8.2 mm, color: red

Feed-through terminal block - XTV 6-QUATTRO



1329511

<https://www.phoenixcontact.com/us/products/1329511>

Plug-in bridge

Plug-in bridge - FBS 4-8 - 3030307

<https://www.phoenixcontact.com/us/products/3030307>



Plug-in bridge, pitch: 8.2 mm, color: red

Plug-in bridge

Plug-in bridge - FBS 5-8 - 3030310

<https://www.phoenixcontact.com/us/products/3030310>



Plug-in bridge, pitch: 8.2 mm, color: red

Feed-through terminal block - XTV 6-QUATTRO



1329511

<https://www.phoenixcontact.com/us/products/1329511>

Plug-in bridge

Plug-in bridge - FBS 6-8 - 3032470

<https://www.phoenixcontact.com/us/products/3032470>



Plug-in bridge, pitch: 8.2 mm, color: red

Plug-in bridge

Plug-in bridge - FBS 10-8 - 3030323

<https://www.phoenixcontact.com/us/products/3030323>



Plug-in bridge, pitch: 8.2 mm, color: red

Feed-through terminal block - XTV 6-QUATTRO



1329511

<https://www.phoenixcontact.com/us/products/1329511>

Plug-in bridge

Plug-in bridge - FBS 2-8 CT - 3033830

<https://www.phoenixcontact.com/us/products/3033830>



Plug-in bridge, pitch: 8.2 mm, color: orange

Plug-in bridge

Plug-in bridge - FBS 3-8 CT - 3033831

<https://www.phoenixcontact.com/us/products/3033831>



Plug-in bridge, pitch: 8.2 mm, color: orange

Feed-through terminal block - XTV 6-QUATTRO



1329511

<https://www.phoenixcontact.com/us/products/1329511>

Plug-in bridge

Plug-in bridge - FBS 4-8 CT - 3033832

<https://www.phoenixcontact.com/us/products/3033832>



Plug-in bridge, pitch: 8.2 mm, color: orange

Plug-in bridge

Plug-in bridge - FBS 10-8 CT - 3033833

<https://www.phoenixcontact.com/us/products/3033833>



Plug-in bridge, pitch: 8.2 mm, color: orange

Feed-through terminal block - XTV 6-QUATTRO



1329511

<https://www.phoenixcontact.com/us/products/1329511>

Plug-in bridge

Plug-in bridge - FBS 2-8 BU - 3032567

<https://www.phoenixcontact.com/us/products/3032567>



Plug-in bridge, pitch: 8.2 mm, color: blue

Plug-in bridge

Plug-in bridge - FBS 3-8 BU - 3032570

<https://www.phoenixcontact.com/us/products/3032570>



Plug-in bridge, pitch: 8.2 mm, color: blue

Feed-through terminal block - XTV 6-QUATTRO

1329511

<https://www.phoenixcontact.com/us/products/1329511>

Plug-in bridge

Plug-in bridge - FBS 4-8 BU - 3032583

<https://www.phoenixcontact.com/us/products/3032583>



Plug-in bridge, pitch: 8.2 mm, color: blue

Plug-in bridge

Plug-in bridge - FBS 5-8 BU - 3032596

<https://www.phoenixcontact.com/us/products/3032596>



Plug-in bridge, pitch: 8.2 mm, color: blue

Feed-through terminal block - XTV 6-QUATTRO



1329511

<https://www.phoenixcontact.com/us/products/1329511>

Plug-in bridge

Plug-in bridge - FBS 6-8 BU - 3032677

<https://www.phoenixcontact.com/us/products/3032677>



Plug-in bridge, pitch: 8.2 mm, color: blue

Plug-in bridge

Plug-in bridge - FBS 10-8 BU - 3032606

<https://www.phoenixcontact.com/us/products/3032606>



Plug-in bridge, pitch: 8.2 mm, color: blue

Feed-through terminal block - XTV 6-QUATTRO



1329511

<https://www.phoenixcontact.com/us/products/1329511>

Plug-in bridge

Plug-in bridge - FBS 2-8 GY - 3032621

<https://www.phoenixcontact.com/us/products/3032621>



Plug-in bridge, pitch: 8.2 mm, color: gray

Plug-in bridge

Plug-in bridge - FBS 3-8 GY - 3032622

<https://www.phoenixcontact.com/us/products/3032622>



Plug-in bridge, pitch: 8.2 mm, color: gray

Feed-through terminal block - XTV 6-QUATTRO



1329511

<https://www.phoenixcontact.com/us/products/1329511>

Plug-in bridge

Plug-in bridge - FBS 4-8 GY - 3032635

<https://www.phoenixcontact.com/us/products/3032635>



Plug-in bridge, pitch: 8.2 mm, color: gray

Plug-in bridge

Plug-in bridge - FBS 5-8 GY - 3032648

<https://www.phoenixcontact.com/us/products/3032648>



Plug-in bridge, pitch: 8.2 mm, color: gray

Feed-through terminal block - XTV 6-QUATTRO



1329511

<https://www.phoenixcontact.com/us/products/1329511>

Plug-in bridge

Plug-in bridge - FBS 6-8 GY - 3032664

<https://www.phoenixcontact.com/us/products/3032664>



Plug-in bridge, pitch: 8.2 mm, color: gray

Plug-in bridge

Plug-in bridge - FBS 10-8 GY - 3032651

<https://www.phoenixcontact.com/us/products/3032651>



Plug-in bridge, pitch: 8.2 mm, color: gray

Feed-through terminal block - XTV 6-QUATTRO

1329511

<https://www.phoenixcontact.com/us/products/1329511>

Short-circuit connector

Short-circuit connector - FBSRH 2-8 - 3033802

<https://www.phoenixcontact.com/us/products/3033802>



Short-circuit connector, pitch: 8.2 mm, color: red

Short-circuit connector

Short-circuit connector - FBSRH 3-8 - 3033803

<https://www.phoenixcontact.com/us/products/3033803>



Short-circuit connector, pitch: 8.2 mm, color: red

Feed-through terminal block - XTV 6-QUATTRO

1329511

<https://www.phoenixcontact.com/us/products/1329511>

Short-circuit connector

Short-circuit connector - FBSRH 4-8 - 3033804

<https://www.phoenixcontact.com/us/products/3033804>



Short-circuit connector, pitch: 8.2 mm, color: red

Plug-in bridge

Plug-in bridge - FBSR 2-8 - 3033808

<https://www.phoenixcontact.com/us/products/3033808>



Plug-in bridge, pitch: 8.2 mm, color: red

Feed-through terminal block - XTV 6-QUATTRO



1329511

<https://www.phoenixcontact.com/us/products/1329511>

Plug-in bridge

Plug-in bridge - FBSR 3-8 - 3001597

<https://www.phoenixcontact.com/us/products/3001597>



Plug-in bridge, pitch: 8.2 mm, color: red

Plug-in bridge

Plug-in bridge - FBSR 4-8 - 3000585

<https://www.phoenixcontact.com/us/products/3000585>



Plug-in bridge, pitch: 8.2 mm, color: red

Feed-through terminal block - XTV 6-QUATTRO

1329511

<https://www.phoenixcontact.com/us/products/1329511>

Plug-in bridge

Plug-in bridge - FBSR 5-8 - 3033809

<https://www.phoenixcontact.com/us/products/3033809>

Plug-in bridge, pitch: 8.2 mm, color: red



Plug-in bridge

Plug-in bridge - FBSR 10-8 - 3001599

<https://www.phoenixcontact.com/us/products/3001599>

Plug-in bridge, pitch: 8.2 mm, color: red



Feed-through terminal block - XTV 6-QUATTRO

1329511

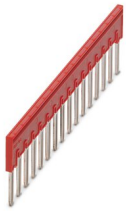
<https://www.phoenixcontact.com/us/products/1329511>



Plug-in bridge

Plug-in bridge - FBSR 16-8 - 3033816

<https://www.phoenixcontact.com/us/products/3033816>



Plug-in bridge, pitch: 8.2 mm, color: red

Switching jumper

Switching jumper - SB-MER 2-8 - 3000587

<https://www.phoenixcontact.com/us/products/3000587>



Switching jumper, pitch: 8.2 mm, color: gray/orange

Feed-through terminal block - XTV 6-QUATTRO



1329511

<https://www.phoenixcontact.com/us/products/1329511>

Switching jumper

Switching jumper - SB-MER 3-8 - 3000588

<https://www.phoenixcontact.com/us/products/3000588>



Switching jumper, pitch: 8.2 mm, color: gray/orange

Switching jumper

Switching jumper - SB-MER 4-8 - 3000589

<https://www.phoenixcontact.com/us/products/3000589>



Switching jumper, pitch: 8.2 mm, color: gray/orange

Feed-through terminal block - XTV 6-QUATTRO

1329511

<https://www.phoenixcontact.com/us/products/1329511>


Reducing bridge

Reducing bridge - RB ST 6-(2,5/4) - 3030860

<https://www.phoenixcontact.com/us/products/3030860>



Reducing bridge, pitch: 9 mm, color: red

 Max. current carrying capacity: 35 A


Reducing bridge

Reducing bridge - RB 16-6 - 3047072

<https://www.phoenixcontact.com/us/products/3047072>



Reducing bridge, pitch: 12.2 mm, color: red

 Max. current carrying capacity: 37 A

Feed-through terminal block - XTV 6-QUATTRO



1329511

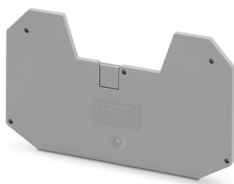
<https://www.phoenixcontact.com/us/products/1329511>

End cover

End cover - D-XTV 6-QUATTRO - 1329517

<https://www.phoenixcontact.com/us/products/1329517>

End cover, length: 90.6 mm, width: 2.2 mm, height: 51.4 mm, color: gray



Screwdriver

Screwdriver - SZF 2-0,8X4,0 - 1204520

<https://www.phoenixcontact.com/us/products/1204520>

Actuation tool, for ST terminal blocks, also suitable for use as a bladed screwdriver, size: 0.8 x 4.0 x 100 mm, 2-component grip, with non-slip grip



Feed-through terminal block - XTV 6-QUATTRO



1329511

<https://www.phoenixcontact.com/us/products/1329511>

Ferrule

Ferrule - AI 1,5 -10 BK - 3200195

<https://www.phoenixcontact.com/us/products/3200195>



Ferrule, sleeve length: 10 mm, length: 16 mm, color: black

Ferrule

Ferrule - AI 1,5 -10 BK-1000 - 3203134

<https://www.phoenixcontact.com/us/products/3203134>



Ferrule, sleeve length: 10 mm, length: 18 mm, color: black

Feed-through terminal block - XTV 6-QUATTRO



1329511

<https://www.phoenixcontact.com/us/products/1329511>

Ferrule

Ferrule - AI 1,5 -12 BK - 3201482

<https://www.phoenixcontact.com/us/products/3201482>



Ferrule, sleeve length: 12 mm, length: 18 mm, color: black

Ferrule

Ferrule - AI 2,5 -10 BU - 3202533

<https://www.phoenixcontact.com/us/products/3202533>



Ferrule, sleeve length: 10 mm, length: 17 mm, color: blue

Feed-through terminal block - XTV 6-QUATTRO

1329511

<https://www.phoenixcontact.com/us/products/1329511>

Ferrule

Ferrule - AI 2,5 -10 BU-1000 - 3203147

<https://www.phoenixcontact.com/us/products/3203147>



Ferrule, sleeve length: 10 mm, length: 17 mm, color: blue

Ferrule

Ferrule - AI 2,5 -12 BU - 3200962

<https://www.phoenixcontact.com/us/products/3200962>



Ferrule, sleeve length: 12 mm, length: 18 mm, color: blue

Feed-through terminal block - XTV 6-QUATTRO



1329511

<https://www.phoenixcontact.com/us/products/1329511>

Ferrule

Ferrule - Al 4 -10 GY - 3200535

<https://www.phoenixcontact.com/us/products/3200535>



Ferrule, sleeve length: 10 mm, length: 17 mm, color: gray

Ferrule

Ferrule - Al 4 -12 GY - 3200959

<https://www.phoenixcontact.com/us/products/3200959>



Ferrule, sleeve length: 12 mm, length: 20 mm, color: gray

Feed-through terminal block - XTV 6-QUATTRO

1329511

<https://www.phoenixcontact.com/us/products/1329511>

Ferrule

Ferrule - AI 6 -12 YE - 3200548

<https://www.phoenixcontact.com/us/products/3200548>

Ferrule, sleeve length: 12 mm, length: 20 mm, color: yellow



DIN rail perforated

DIN rail perforated - NS 35/ 7,5 PERF 2000MM - 0801733

<https://www.phoenixcontact.com/us/products/0801733>

DIN rail perforated, acc. to EN 60715, material: Steel, galvanized, passivated with a thick layer, Standard profile, color: silver, Pack of 25 (50 m)



Feed-through terminal block - XTV 6-QUATTRO



1329511

<https://www.phoenixcontact.com/us/products/1329511>

DIN rail, unperforated

DIN rail, unperforated - NS 35/ 7,5 UNPERF 2000MM - 0801681

<https://www.phoenixcontact.com/us/products/0801681>



DIN rail, unperforated, acc. to EN 60715, material: Steel, galvanized, passivated with a thick layer, Standard profile, color: silver, Pack of 25 (50 m)

DIN rail perforated

DIN rail perforated - NS 35/ 7,5 WH PERF 2000MM - 1204119

<https://www.phoenixcontact.com/us/products/1204119>



DIN rail perforated, acc. to EN 60715, material: Steel, Galvanized, white passivated, Standard profile, color: silver, Pack of 25 (50 m)

Feed-through terminal block - XTV 6-QUATTRO



1329511

<https://www.phoenixcontact.com/us/products/1329511>

DIN rail, unperforated

DIN rail, unperforated - NS 35/ 7,5 WH UNPERF 2000MM-VPE 10 - 1204122

<https://www.phoenixcontact.com/us/products/1204122>



DIN rail, unperforated, acc. to EN 60715, material: Steel, Galvanized, white passivated, Standard profile, color: silver, Pack of 10 (20 m)

DIN rail, unperforated

DIN rail, unperforated - NS 35/ 7,5 AL UNPERF 2000MM - 0801704

<https://www.phoenixcontact.com/us/products/0801704>



DIN rail, unperforated, acc. to EN 60715, material: Aluminum, uncoated, Standard profile, color: silver, Pack of 25 (50 m)

Feed-through terminal block - XTV 6-QUATTRO



1329511

<https://www.phoenixcontact.com/us/products/1329511>

DIN rail perforated

DIN rail perforated - NS 35/ 7,5 ZN PERF 2000MM - 1206421

<https://www.phoenixcontact.com/us/products/1206421>



DIN rail perforated, acc. to EN 60715, material: Steel, galvanized, Standard profile, color: silver, Pack of 25 (50 m)

DIN rail, unperforated

DIN rail, unperforated - NS 35/ 7,5 ZN UNPERF 2000MM - 1206434

<https://www.phoenixcontact.com/us/products/1206434>



DIN rail, unperforated, acc. to EN 60715, material: Steel, galvanized, Standard profile, color: silver, Pack of 25 (50 m)

Feed-through terminal block - XTV 6-QUATTRO



1329511

<https://www.phoenixcontact.com/us/products/1329511>

DIN rail, unperforated

DIN rail, unperforated - NS 35/ 7,5 CU UNPERF 2000MM-VPE 10 - 0801762

<https://www.phoenixcontact.com/us/products/0801762>



DIN rail, unperforated, acc. to EN 60715, material: Copper, uncoated, Standard profile, color: copper-colored, Pack of 10 (20 m)

End cap

End cap - NS 35/ 7,5 CAP - 1206560

<https://www.phoenixcontact.com/us/products/1206560>

DIN rail end piece, for DIN rail NS 35/7.5



Feed-through terminal block - XTV 6-QUATTRO



1329511

<https://www.phoenixcontact.com/us/products/1329511>

DIN rail perforated

DIN rail perforated - NS 35/15 PERF 2000MM - 1201730

<https://www.phoenixcontact.com/us/products/1201730>



DIN rail perforated, similar to EN 60715, material: Steel, galvanized, passivated with a thick layer, Standard profile, color: silver, Pack of 25 (50 m)

DIN rail, unperforated

DIN rail, unperforated - NS 35/15 UNPERF 2000MM - 1201714

<https://www.phoenixcontact.com/us/products/1201714>



DIN rail, unperforated, similar to EN 60715, material: Steel, galvanized, passivated with a thick layer, Standard profile, color: silver, Pack of 25 (50 m)

Feed-through terminal block - XTV 6-QUATTRO

1329511

<https://www.phoenixcontact.com/us/products/1329511>

DIN rail perforated

DIN rail perforated - NS 35/15 WH PERF 2000MM - 0806602

<https://www.phoenixcontact.com/us/products/0806602>



DIN rail perforated, similar to EN 60715, material: Steel, Galvanized, white passivated, Standard profile, color: white, Pack of 25 (50 m)

DIN rail, unperforated

DIN rail, unperforated - NS 35/15 WH UNPERF 2000MM-VPE 10 - 1204135

<https://www.phoenixcontact.com/us/products/1204135>



DIN rail, unperforated, similar to EN 60715, material: Steel, Galvanized, white passivated, Standard profile, color: silver, Pack of 10 (20 m)

Feed-through terminal block - XTV 6-QUATTRO



1329511

<https://www.phoenixcontact.com/us/products/1329511>

DIN rail, unperforated

DIN rail, unperforated - NS 35/15 AL UNPERF 2000MM - 1201756

<https://www.phoenixcontact.com/us/products/1201756>



DIN rail, unperforated, similar to EN 60715, material: Aluminum, uncoated, Standard profile, color: silver

DIN rail perforated

DIN rail perforated - NS 35/15 ZN PERF 2000MM - 1206599

<https://www.phoenixcontact.com/us/products/1206599>



DIN rail perforated, similar to EN 60715, material: Steel, galvanized, Standard profile, color: silver, Pack of 25 (50 m)

Feed-through terminal block - XTV 6-QUATTRO

1329511

<https://www.phoenixcontact.com/us/products/1329511>

DIN rail, unperforated

DIN rail, unperforated - NS 35/15 ZN UNPERF 2000MM - 1206586

<https://www.phoenixcontact.com/us/products/1206586>



DIN rail, unperforated, similar to EN 60715, material: Steel, galvanized, Standard profile, color: silver, Pack of 25 (50 m)

DIN rail, unperforated

DIN rail, unperforated - NS 35/15 CU UNPERF 2000MM-VPE 10 - 1201895

<https://www.phoenixcontact.com/us/products/1201895>



DIN rail, unperforated, similar to EN 60715, material: Copper, uncoated, Standard profile, color: copper-colored, Pack of 10 (20 m)

Feed-through terminal block - XTV 6-QUATTRO

1329511

<https://www.phoenixcontact.com/us/products/1329511>

End cap

End cap - NS 35/15 CAP - 1206573

<https://www.phoenixcontact.com/us/products/1206573>

DIN rail end piece, for DIN rail NS 35/15



DIN rail, unperforated

DIN rail, unperforated - NS 35/15-2,3 UNPERF 2000MM-VPE 10 - 1201798

<https://www.phoenixcontact.com/us/products/1201798>



DIN rail, unperforated, acc. to EN 60715, material: Steel, galvanized, passivated with a thick layer, Standard profile 2.3 mm, color: silver, Pack of 10 (20 m)

Feed-through terminal block - XTV 6-QUATTRO



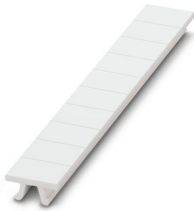
1329511

<https://www.phoenixcontact.com/us/products/1329511>

Zack marker strip

Zack marker strip - ZB 8:UNBEDRUCKT - 1052002

<https://www.phoenixcontact.com/us/products/1052002>

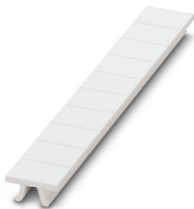


Zack marker strip, Strip, white, unlabeled, can be labeled with: CMS-P1-PLOTTER, PLOTMARK, mounting type: snapped, for terminal block width: 8.2 mm, lettering field size: 10.5 x 8.15 mm, Number of individual labels: 10

Zack marker strip

Zack marker strip - ZB 8 CUS - 0825011

<https://www.phoenixcontact.com/us/products/0825011>



Zack marker strip, can be ordered: Strip, white, labeled according to customer specifications, mounting type: snap into tall marker groove, for terminal block width: 8.2 mm, lettering field size: 10.5 x 8.15 mm, Number of individual labels: 10

Feed-through terminal block - XTV 6-QUATTRO



1329511

<https://www.phoenixcontact.com/us/products/1329511>

Marker for terminal blocks

Marker for terminal blocks - UC-TM 8 - 0818072

<https://www.phoenixcontact.com/us/products/0818072>



Marker for terminal blocks, Sheet, white, unlabeled, can be labeled with: BLUEMARK ID COLOR, BLUEMARK ID, BLUEMARK CLED, PLOTMARK, CMS-P1-PLOTTER, mounting type: snapped, for terminal block width: 8.2 mm, lettering field size: 7.6 x 10.5 mm, Number of individual labels: 56

Marker for terminal blocks

Marker for terminal blocks - UC-TM 8 CUS - 0824597

<https://www.phoenixcontact.com/us/products/0824597>



Marker for terminal blocks, can be ordered: by sheet, white, labeled according to customer specifications, mounting type: snap into tall marker groove, for terminal block width: 8.2 mm, lettering field size: 7.6 x 10.5 mm, Number of individual labels: 56

Feed-through terminal block - XTV 6-QUATTRO



1329511

<https://www.phoenixcontact.com/us/products/1329511>

Marker for terminal blocks

Marker for terminal blocks - UCT-TM 8 - 0828740

<https://www.phoenixcontact.com/us/products/0828740>



Marker for terminal blocks, Sheet, white, unlabeled, can be labeled with: TOPMARK NEO, TOPMARK LASER, BLUEMARK ID COLOR, BLUEMARK ID, BLUEMARK CLED, THERMOMARK PRIME, THERMOMARK CARD 2.0, THERMOMARK CARD, mounting type: snapped, for terminal block width: 8.2 mm, lettering field size: 7.6 x 10.5 mm, Number of individual labels: 42

Marker for terminal blocks

Marker for terminal blocks - UCT-TM 8 CUS - 0829616

<https://www.phoenixcontact.com/us/products/0829616>



Marker for terminal blocks, can be ordered: by sheet, white, labeled according to customer specifications, mounting type: snap into tall marker groove, for terminal block width: 8.2 mm, lettering field size: 7.6 x 10.5 mm, Number of individual labels: 42

Feed-through terminal block - XTV 6-QUATTRO



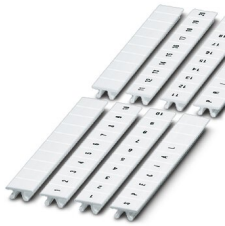
1329511

<https://www.phoenixcontact.com/us/products/1329511>

Zack marker strip

Zack marker strip - ZB 8,LGS:FORTL.ZAHLEN - 1052015

<https://www.phoenixcontact.com/us/products/1052015>

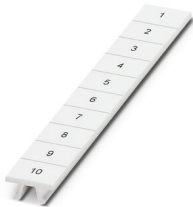


Zack marker strip, Strip, white, labeled, can be labeled with: CMS-P1-PLOTTER, printed horizontally: consecutive numbers 1 ... 10, 11 ... 20, etc. up to 91 ... 100, mounting type: snapped, for terminal block width: 8.2 mm, lettering field size: 10. 5 x 8.15 mm, Number of individual labels: 10

Zack marker strip

Zack marker strip - ZB 8,QR:FORTL.ZAHLEN - 1052028

<https://www.phoenixcontact.com/us/products/1052028>



Zack marker strip, Strip, white, labeled, can be labeled with: CMS-P1-PLOTTER, Printed vertically: consecutive numbers 1 ... 10, 11 ... 20, etc. up to 91 ... 100, mounting type: snapped, for terminal block width: 8.2 mm, lettering field size: 10. 5 x 8.15 mm, Number of individual labels: 10

Feed-through terminal block - XTV 6-QUATTRO



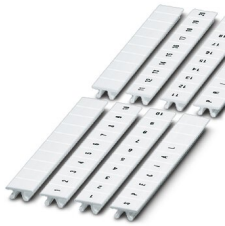
1329511

<https://www.phoenixcontact.com/us/products/1329511>

Marker for terminal blocks

Marker for terminal blocks - ZB 8,LGS:L1-N,PE - 1052413

<https://www.phoenixcontact.com/us/products/1052413>



Marker for terminal blocks, Strip, white, labeled, can be labeled with: CMS-P1-PLOTTER, horizontal: L1, L2, L3, N, PE, L1, L2, L3, N, PE, mounting type: snapped, for terminal block width: 8.2 mm, lettering field size: 10.5 x 8.15 mm, Number of individual labels: 10

Zack Marker strip, flat

Zack Marker strip, flat - ZBF 8:UNBEDRUCKT - 0808781

<https://www.phoenixcontact.com/us/products/0808781>



Zack Marker strip, flat, Strip, white, unlabeled, can be labeled with: PLOTMARK, CMS-P1-PLOTTER, mounting type: snapped, for terminal block width: 8 mm, lettering field size: 5.15 x 8.15 mm, Number of individual labels: 10

Feed-through terminal block - XTV 6-QUATTRO

1329511

<https://www.phoenixcontact.com/us/products/1329511>

Zack Marker strip, flat

Zack Marker strip, flat - ZBF 8 CUS - 0825030

<https://www.phoenixcontact.com/us/products/0825030>



Zack Marker strip, flat, can be ordered: Strip, white, labeled according to customer specifications, mounting type: snap into flat marker groove, for terminal block width: 8 mm, lettering field size: 5.15 x 8.15 mm, Number of individual labels: 10

Zack Marker strip, flat

Zack Marker strip, flat - ZBF 8,LGS:FORTL.ZAHLEN - 0808804

<https://www.phoenixcontact.com/us/products/0808804>



Zack Marker strip, flat, Strip, white, labeled, printed horizontally: consecutive numbers 1 ... 10, 11 ... 20, etc. up to 101 ... 110, mounting type: snapped, for terminal block width: 8 mm, lettering field size: 5.15 x 8.15 mm, Number of individual labels: 10

Feed-through terminal block - XTV 6-QUATTRO



1329511

<https://www.phoenixcontact.com/us/products/1329511>

Marker for terminal blocks

Marker for terminal blocks - UC-TMF 8 - 0818137

<https://www.phoenixcontact.com/us/products/0818137>



Marker for terminal blocks, Sheet, white, unlabeled, can be labeled with: BLUEMARK ID COLOR, BLUEMARK ID, BLUEMARK CLED, PLOTMARK, CMS-P1-PLOTTER, mounting type: snapped, for terminal block width: 8.2 mm, lettering field size: 7.6 x 5.1 mm, Number of individual labels: 56

Marker for terminal blocks

Marker for terminal blocks - UC-TMF 8 CUS - 0824654

<https://www.phoenixcontact.com/us/products/0824654>



Marker for terminal blocks, can be ordered: by sheet, white, labeled according to customer specifications, mounting type: snap into flat marker groove, for terminal block width: 8.2 mm, lettering field size: 7.6 x 5.1 mm, Number of individual labels: 56

Feed-through terminal block - XTV 6-QUATTRO



1329511

<https://www.phoenixcontact.com/us/products/1329511>

Marker for terminal blocks

Marker for terminal blocks - UCT-TMF 8 - 0828748

<https://www.phoenixcontact.com/us/products/0828748>



Marker for terminal blocks, Sheet, white, unlabeled, can be labeled with: TOPMARK NEO, TOPMARK LASER, BLUEMARK ID COLOR, BLUEMARK ID, BLUEMARK CLED, THERMOMARK PRIME, THERMOMARK CARD 2.0, THERMOMARK CARD, mounting type: snapped, for terminal block width: 8.2 mm, lettering field size: 7.4 x 4.7 mm, Number of individual labels: 42

Marker for terminal blocks

Marker for terminal blocks - UCT-TMF 8 CUS - 0829672

<https://www.phoenixcontact.com/us/products/0829672>



Marker for terminal blocks, can be ordered: by sheet, white, labeled according to customer specifications, mounting type: snap into flat marker groove, for terminal block width: 8.2 mm, lettering field size: 7.4 x 4.7 mm, Number of individual labels: 42

Feed-through terminal block - XTV 6-QUATTRO



1329511

<https://www.phoenixcontact.com/us/products/1329511>

Test plugs

Test plugs - MPS-MT - 0201744

<https://www.phoenixcontact.com/us/products/0201744>



Test plugs, with solder connection up to 1 mm² conductor cross section, color: gray

Insulating sleeve

Insulating sleeve - MPS-IH WH - 0201663

<https://www.phoenixcontact.com/us/products/0201663>



Insulating sleeve, color: white

Feed-through terminal block - XTV 6-QUATTRO



1329511

<https://www.phoenixcontact.com/us/products/1329511>

Insulating sleeve

Insulating sleeve - MPS-IH RD - 0201676

<https://www.phoenixcontact.com/us/products/0201676>

Insulating sleeve, color: red

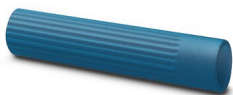


Insulating sleeve

Insulating sleeve - MPS-IH BU - 0201689

<https://www.phoenixcontact.com/us/products/0201689>

Insulating sleeve, color: blue



Feed-through terminal block - XTV 6-QUATTRO



1329511

<https://www.phoenixcontact.com/us/products/1329511>

Insulating sleeve

Insulating sleeve - MPS-IH YE - 0201692

<https://www.phoenixcontact.com/us/products/0201692>

Insulating sleeve, color: yellow



Insulating sleeve

Insulating sleeve - MPS-IH GN - 0201702

<https://www.phoenixcontact.com/us/products/0201702>

Insulating sleeve, color: green



Feed-through terminal block - XTV 6-QUATTRO



1329511

<https://www.phoenixcontact.com/us/products/1329511>

Insulating sleeve

Insulating sleeve - MPS-IH GY - 0201728

<https://www.phoenixcontact.com/us/products/0201728>

Insulating sleeve, color: gray



Insulating sleeve

Insulating sleeve - MPS-IH BK - 0201731

<https://www.phoenixcontact.com/us/products/0201731>

Insulating sleeve, color: black



Feed-through terminal block - XTV 6-QUATTRO



1329511

<https://www.phoenixcontact.com/us/products/1329511>

Test adapter

Test adapter - PAI-4-FIX BU - 3032729

<https://www.phoenixcontact.com/us/products/3032729>



Test adapter, Touch proof against unintentional direct contact according to DIN EN 50274 when plugged in, for 4 mm test plug and terminal blocks with 8.2 mm pitch, color: blue

Test adapter

Test adapter - PAI-4-FIX OG - 3034455

<https://www.phoenixcontact.com/us/products/3034455>



4 mm test adapter, for terminal blocks with 8.2 mm pitch

Feed-through terminal block - XTV 6-QUATTRO



1329511

<https://www.phoenixcontact.com/us/products/1329511>

Test adapter

Test adapter - PAI-4-FIX YE - 3032745

<https://www.phoenixcontact.com/us/products/3032745>



Test adapter, Touch proof against unintentional direct contact according to DIN EN 50274 when plugged in, for 4 mm test plug and terminal blocks with 8.2 mm pitch, color: yellow

Test adapter

Test adapter - PAI-4-FIX RD - 3032732

<https://www.phoenixcontact.com/us/products/3032732>



Test adapter, Touch proof against unintentional direct contact according to DIN EN 50274 when plugged in, for 4 mm test plug and terminal blocks with 8.2 mm pitch, color: red

Feed-through terminal block - XTV 6-QUATTRO



1329511

<https://www.phoenixcontact.com/us/products/1329511>

Test adapter

Test adapter - PAI-4-FIX GN - 3032758

<https://www.phoenixcontact.com/us/products/3032758>



Test adapter, Touch proof against unintentional direct contact according to DIN EN 50274 when plugged in, for 4 mm test plug and terminal blocks with 8.2 mm pitch, color: green

Test adapter

Test adapter - PAI-4-FIX BK - 3032774

<https://www.phoenixcontact.com/us/products/3032774>



Test adapter, Touch proof against unintentional direct contact according to DIN EN 50274 when plugged in, for 4 mm test plug and terminal blocks with 8.2 mm pitch, color: black

Feed-through terminal block - XTV 6-QUATTRO



1329511

<https://www.phoenixcontact.com/us/products/1329511>

Test adapter

Test adapter - PAI-4-FIX GY - 3032790

<https://www.phoenixcontact.com/us/products/3032790>



Test adapter, Touch proof against unintentional direct contact according to DIN EN 50274 when plugged in, for 4 mm test plug and terminal blocks with 8.2 mm pitch, color: gray

Test adapter

Test adapter - PAI-4-FIX VT - 3032761

<https://www.phoenixcontact.com/us/products/3032761>



Test adapter, Touch proof against unintentional direct contact according to DIN EN 50274 when plugged in, for 4 mm test plug and terminal blocks with 4.2 mm .. 8.2 mm pitch, color: violet

Feed-through terminal block - XTV 6-QUATTRO



1329511

<https://www.phoenixcontact.com/us/products/1329511>

Test adapter

Test adapter - PAI-4-FIX BN - 3032787

<https://www.phoenixcontact.com/us/products/3032787>



Test adapter, Touch proof against unintentional direct contact according to DIN EN 50274 when plugged in, for 4 mm test plug and terminal blocks with 8.2 mm pitch, color: brown

Test adapter

Test adapter - PAI-4-FIX WH - 3032797

<https://www.phoenixcontact.com/us/products/3032797>



4 mm test adapter, for terminal blocks with 8.2 mm pitch

Feed-through terminal block - XTV 6-QUATTRO



1329511

<https://www.phoenixcontact.com/us/products/1329511>

Test adapter

Test adapter - PAIS-4-FIX GY - 3032791

<https://www.phoenixcontact.com/us/products/3032791>



Test adapter, Touch proof against unintentional direct contact according to DIN EN 50274 when plugged in, for 4 mm test plug and terminal blocks with 5.2 mm, 6.2 mm, and 8.2 mm pitch, color: gray

Test adapter

Test adapter - PAIS-4-FIX BK - 3032792

<https://www.phoenixcontact.com/us/products/3032792>



Test adapter, Touch proof against unintentional direct contact according to DIN EN 50274 when plugged in, for 4 mm test plug and terminal blocks with 5.2 mm, 6.2 mm, and 8.2 mm pitch, color: black

Feed-through terminal block - XTV 6-QUATTRO



1329511

<https://www.phoenixcontact.com/us/products/1329511>

Test adapter

Test adapter - PAIS-4-FIX RD - 3032793

<https://www.phoenixcontact.com/us/products/3032793>



Test adapter, Do not plug in while the power is connected, for 4 mm test plug and terminal blocks with 5.2 mm, 6.2 mm, and 8.2 mm pitch, color: red

Test adapter

Test adapter - PAIS-4-FIX BU - 3032798

<https://www.phoenixcontact.com/us/products/3032798>



Test adapter, Touch proof against unintentional direct contact according to DIN EN 50274 when plugged in, for 4 mm test plug and terminal blocks with 5.2 mm, 6.2 mm, and 8.2 mm pitch, color: blue

Feed-through terminal block - XTV 6-QUATTRO



1329511

<https://www.phoenixcontact.com/us/products/1329511>

Test adapter

Test adapter - PAIS-4-FIX YE - 3032799

<https://www.phoenixcontact.com/us/products/3032799>



Test adapter, Touch proof against unintentional direct contact according to DIN EN 50274 when plugged in, for 4 mm test plug and terminal blocks with 5.2 mm, 6.2 mm, and 8.2 mm pitch, color: yellow

Test adapter

Test adapter - PAIS-4-FIX GN - 3032801

<https://www.phoenixcontact.com/us/products/3032801>



Test adapter, Touch proof against unintentional direct contact according to DIN EN 50274 when plugged in, for 4 mm test plug and terminal blocks with 5.2 mm, 6.2 mm, and 8.2 mm pitch, color: green

Feed-through terminal block - XTV 6-QUATTRO



1329511

<https://www.phoenixcontact.com/us/products/1329511>

Test adapter

Test adapter - PAIS-4-FIX VT - 3032802

<https://www.phoenixcontact.com/us/products/3032802>



Test adapter, Touch proof against unintentional direct contact according to DIN EN 50274 when plugged in, for 4 mm test plug and terminal blocks with 5.2 mm, 6.2 mm, and 8.2 mm pitch, color: violet

Test plugs

Test plugs - PS-8 - 3031005

<https://www.phoenixcontact.com/us/products/3031005>



Test plugs, Modular test plug, color: red

Feed-through terminal block - XTV 6-QUATTRO



1329511

<https://www.phoenixcontact.com/us/products/1329511>

Spacer plate

Spacer plate - DP PS-8 - 3036741

<https://www.phoenixcontact.com/us/products/3036741>



Spacer plate, length: 22.4 mm, width: 8.2 mm, height: 29 mm, number of positions: 1, color: red

Test plugs

Test plugs - PS-8/2,3MM RD - 3048564

<https://www.phoenixcontact.com/us/products/3048564>



Test plugs, color: red

Feed-through terminal block - XTV 6-QUATTRO



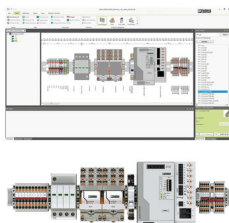
1329511

<https://www.phoenixcontact.com/us/products/1329511>

Software

Software - PROJECT COMPLETE - 1050453

<https://www.phoenixcontact.com/us/products/1050453>



Intuitive planning and marking software for configuring terminal strips and for professional marking of marking materials for terminal blocks, conductors, cables, devices, and systems. The software is available for download

End clamp

End clamp - E/UK - 1201442

<https://www.phoenixcontact.com/us/products/1201442>



End clamp, material: PA, color: gray, Mounting on a DIN rail NS 32 or NS 35

Feed-through terminal block - XTV 6-QUATTRO



1329511

<https://www.phoenixcontact.com/us/products/1329511>

End clamp

End clamp - E/UK 1 - 1201413

<https://www.phoenixcontact.com/us/products/1201413>



End clamps, for supporting the ends of double-level and three-level terminal blocks, width: 10 mm, color: gray

Marker for terminal blocks

Marker for terminal blocks - TMT (EX9,5)R - 0828295

<https://www.phoenixcontact.com/us/products/0828295>



Marker for terminal blocks, Roll, white, unlabeled, can be labeled with: THERMOMARK ROLL 2.0, THERMOMARK ROLL, THERMOMARK ROLL X1, THERMOMARK ROLLMaster 300/600, THERMOMARK X1.2, mounting type: snapped, snap into tall marker groove, lettering field size: 9.5 x 50000 mm, Number of individual labels: 1

Feed-through terminal block - XTV 6-QUATTRO



1329511

<https://www.phoenixcontact.com/us/products/1329511>

Marker for terminal blocks

Marker for terminal blocks - US-TM 100 - 0829255

<https://www.phoenixcontact.com/us/products/0829255>



Marker for terminal blocks, Card, white, unlabeled, can be labeled with: BLUEMARK ID COLOR, BLUEMARK ID, THERMOMARK PRIME, THERMOMARK CARD 2.0, THERMOMARK CARD, mounting type: snapped, lettering field size: 104 x 9.8 mm, Number of individual labels: 13

End clamp

End clamp - CLIPFIX 35 - 3022218

<https://www.phoenixcontact.com/us/products/3022218>



Quick mounting end clamp for NS 35/7,5 DIN rail or NS 35/15 DIN rail, with marking option, width: 9.5 mm, color: gray

Feed-through terminal block - XTV 6-QUATTRO



1329511

<https://www.phoenixcontact.com/us/products/1329511>

End clamp

End clamp - CLIPFIX 35-5 - 3022276

<https://www.phoenixcontact.com/us/products/3022276>

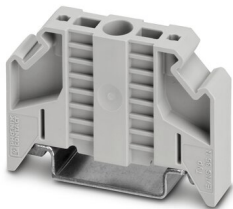


Quick mounting end clamp for NS 35/7,5 DIN rail or NS 35/15 DIN rail, with marking option, with parking option for FBS...5, FBS...6, KSS 5, KSS 6, width: 5.15 mm, color: gray

End clamp

End clamp - E/NS 35 N - 0800886

<https://www.phoenixcontact.com/us/products/0800886>



End clamp, width: 9.5 mm, color: gray

Phoenix Contact 2022 © - all rights reserved
<https://www.phoenixcontact.com>

Phoenix Contact USA
586 Fulling Mill Road
Middletown, PA 17057, United States
(+717) 944-1300
info@phoenixcon.com