

PLEASE CHECK WWW.MOLEX.COM FOR LATEST PART INFORMATION

Part Number: [1301490017](#)
Status: **Active**
Overview: [Heavy-Duty Industrial Wiring Devices](#)
Description: Safeway Flanged Inlet with Locking Blade, 2 Pole/3 Wire, NEMA L6-15, 250V

Documents:

[Brochure \(PDF\)](#) [RoHS Certificate of Compliance \(PDF\)](#)

Agency Certification

CSA LR6837
 UL E10176

General

Product Family [Wiring Devices](#)
 Series [130149](#)
 IP Rating N/A
 NEMA Configuration NEMA L6-15
 Overview [Heavy-Duty Industrial Wiring Devices](#)
 Product Name Safeway
 Receptacle Type Single
 Specialty N/A
 Type Inlet
 UPC 78678870075

Physical

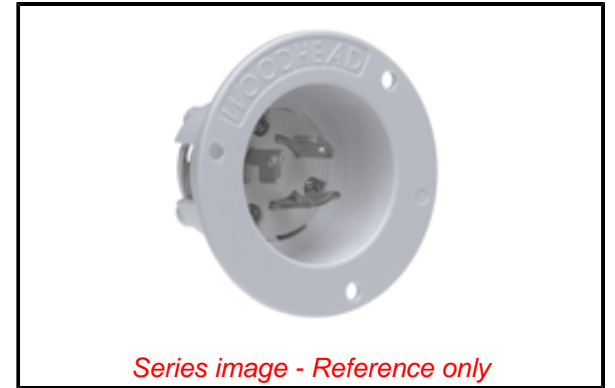
Flange Yes
 Flip Lid No
 Gender Male
 Length N/A
 Locking Blade Yes
 Poles 2-pole/3-wire

Electrical

Cord Type N/A
 Current - Maximum per Contact 15.0A
 GFCI No
 Lighted Connector No
 Voltage - Maximum 250V

Material Info

Engineering Number 2449MB



Series image - Reference only

EU ELV

Not Reviewed

EU RoHS

Not Reviewed

REACH SVHC

Not Reviewed

Halogen-Free

Status

Not Reviewed

For more information, please visit [Contact US](#)

China ROHS

Not Reviewed

ELV

Not Reviewed

RoHS Phthalates

Not Reviewed

Search Parts in this Series

[130149 Series](#)