

**PLEASE CHECK WWW.MOLEX.COM FOR LATEST PART INFORMATION**

**Part Number:** [1301280114](#)  
**Status:** **Active**  
**Overview:** [Outlet Boxes](#)  
**Description:** Woodhead FD Yellow Glass-Filled Polyester Box, Corrosion -resistant (2) 12.70mm (.500") Threaded Knock-out Openings

**Documents:**

[Drawing \(PDF\)](#)  
[Brochure \(PDF\)](#)

[RoHS Certificate of Compliance \(PDF\)](#)

**Agency Certification**

UL E117594

**General**

Product Family Power Distribution  
 Series [130128](#)  
 Enclosure Rating N/A  
 GFCI Reset N/A  
 Mounting Style Permanent  
 Open Neutral Relay N/A  
 Overview [Outlet Boxes](#)  
 Product Name Woodhead  
 Receptacle Type N/A  
 Type FD Box - Wet Location  
 UPC 78678877952

**Physical**

Cord Diameter N/A  
 Cord Grip Body Size N/A  
 Cord Length N/A  
 Feed-Thru Yes  
 Flip Lid No  
 Material - Housing PBT Glass-Filled  
 Net Weight 406.872/g  
 Number of Receptacles 0  
 Packaging Type Carton

**Electrical**

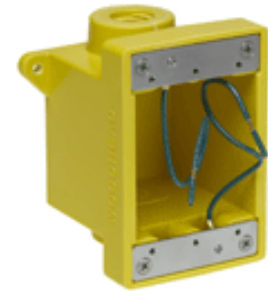
Cord Type N/A  
 Current - Maximum per Contact N/A  
 GFCI No  
 Ground Continuity Monitor No  
 NEMA Configuration N/A  
 Voltage - Maximum N/A

**Material Info**

Engineering Number 452CR

**Reference - Drawing Numbers**

Sales Drawing 1301280113-000



*Series image - Reference only*

**EU ELV**

**Not Reviewed**

**EU RoHS**

**Not Reviewed**

**REACH SVHC**

Not Reviewed

**Halogen-Free**

**Status**

**Not Reviewed**

For more information, please visit [Contact US](#)

China ROHS

Not Reviewed

ELV

Not Reviewed

RoHS Phthalates

Not Reviewed

**Search Parts in this Series**

[130128 Series](#)