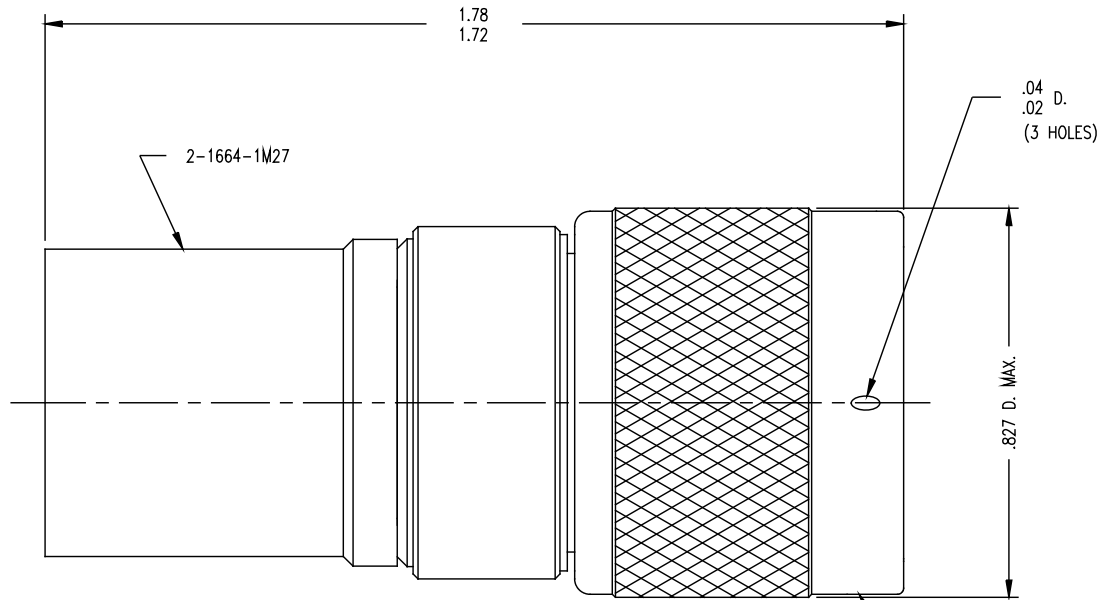


GSD



NOTES:

1. FOR USE WITH BOEING S280W503-6 & ADAMS RUSSELL FC48Z CABLE.
2. FOR CABLING INSTRUCTIONS SEE 3-546-2.
3. FOR CRIMPING USE DIE KTH-2229.
4. INTERFACE PER MIL-STD-348, FIG. 304-1.
5. CENTER CONTACT (1-7267-1MA9) SUPPLIED UNASSEMBLED.
6. MARK PACKAGE: KINGS 1205-61-9
XX XX (DATE CODE)
7. MATERIALS:
 - K-GRIP SLEEVE-COMMERCIAL BRONZE, ASTM-B-135
 - GASKET-SILICONE RUBBER, ZZ-R-765
 - C-RING } PHOS. BRONZE, QQ-B-750
 - OUTER CONTACT } PHOS. BRONZE, QQ-B-750
 - INSULATOR-TEFLON, ASTM-D-4894
 - ALL OTHER METAL PARTS-BRASS, ASTM-B16
8. FINISHES:
 - CENTER CONTACT-GOLD PLATE PER MIL-G-45204
 - OUTER CONTACT-SILVER PLATE PER QQ-S-365
 - ALL OTHER METAL PARTS-KINGS TARNISH RESISTANT FINISH (TR-5)
9. ELECTRICAL CHARACTERISTICS:
 - NOMINAL IMPEDANCE-50 OHMS
 - FREQUENCY RANGE-DC TO 11 GHZ
 - WORKING VOLTAGE-1000 VRMS
10. WEIGHT: 43.1 GRAMS (0.095 POUNDS)

STAMP: KINGS 1205-61-9
YRWK (DATE CODE)

1205-61-9

REVISIONS

ISSUE	CHANGES
0	ER 35533 KH 04/18/94
1	CN 39517 E HVN 07/07/06

KAM3640

SCALE 4:1

APPROX SURFACE AREA

WAS: E-18298

USED ON

REF: BOEING

PLUG, N

DRAWN KH DATE 04/08/94

DESIGN JT DATE 04/11/94

APPR. DATE

KINGS
ELECTRONICS CO., INC.
TUCKAHOE, NEW YORK 10707

1205-61-9

GSD