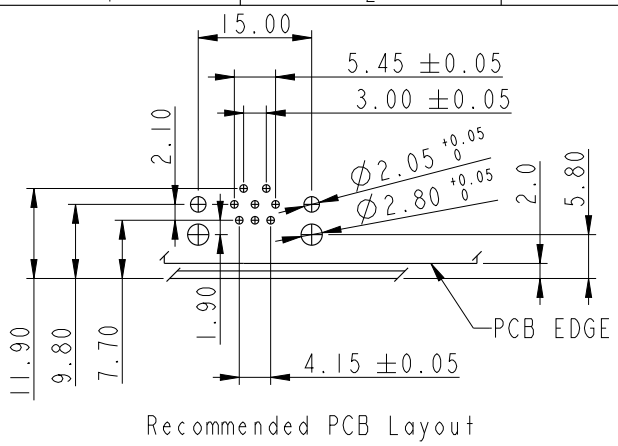
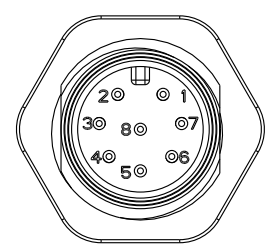
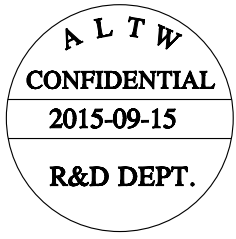
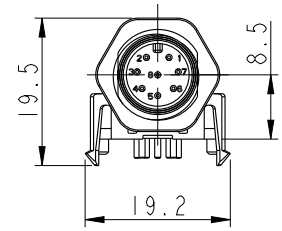
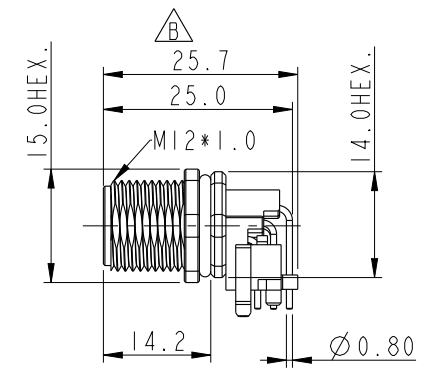
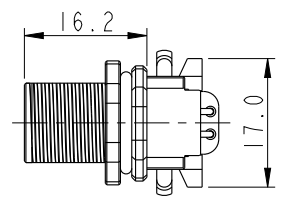
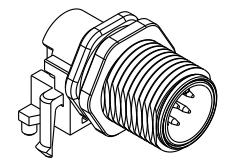


THIS DOCUMENT IS SUBJECT TO CHANGE WITHOUT NOTICE. IT IS CONFIDENTIAL AND A PROPERTY OF Amphenol LTW. DISCLOSURE TO THIRD PARTY HAS TO BE AUTHORIZED BY Amphenol LTW.

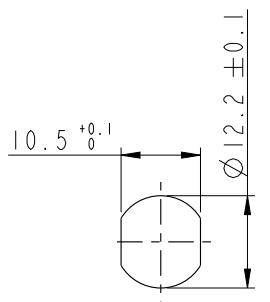
REV.	ECN NO.	DATE	SIGN	DESCRIPTION
A		2012-11-07	Tao-Cheng	Change Rev.03 To Rev.A
B	LE315A0023	2015-09-15	Yulong_wang	Add the Pin Holder.



Recommended PCB Layout

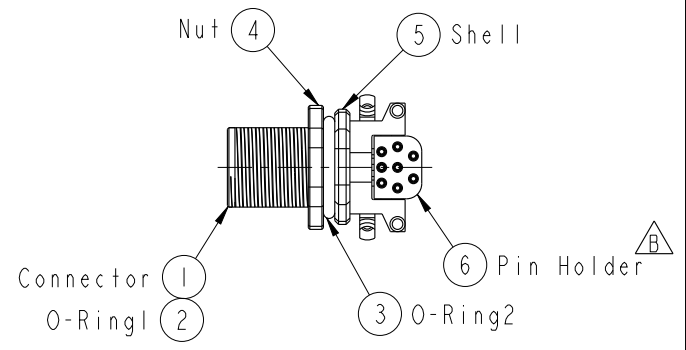


Conn. Pin Assignments Front View



Recommended Panel Cut-Out

- Note:
- * Ⓢ Important Dimension To Check.
 - * Waterproof Rating: IP67 (Mated Waterproof)
 - * Connector: PBT+PC, Black
 - * Male Pins: Copper Alloy, Gold Plated
 - * Shell: Zinc Alloy, Nickel Plated
 - * Nut: Zinc Alloy, Nickel Plated
 - * O-Ring1: Silicone, Black
 - * O-Ring2: Silicone, Gray
 - * Pin Holder: PBT+PC, Black Ⓢ
 - * For Panel Thickness Max. 3.0mm
 - * For PCB Thickness Max. 1.5mm



UNIT: mm		TITLE		ITEM NO.		DRAWN BY		DATE	
		M12, 90° Panel 8PIN MCONN MPIN (Mated Waterproof)		12-08PMMR-SF7001		Yulong_wang		2015-09-15	
TOLERANCE		SCALE	SIZE	SHEET	DWG NO.	CHECKED BY	DATE		
.X ±0.25		1:1	A4	1 OF 1	12-08PMMR-SF7001	Cary	2015-09-15		
.XX ±0.1		REV.	WC-REV.		CUSTOMER	APPROVED BY	DATE		
.XXX ±0.05		B	A.6		ALTW	Jerry	2015-09-15		
ANGLES ±1°		Inspection item		Amphenol LTW 安費諾亮泰企業股份有限公司					