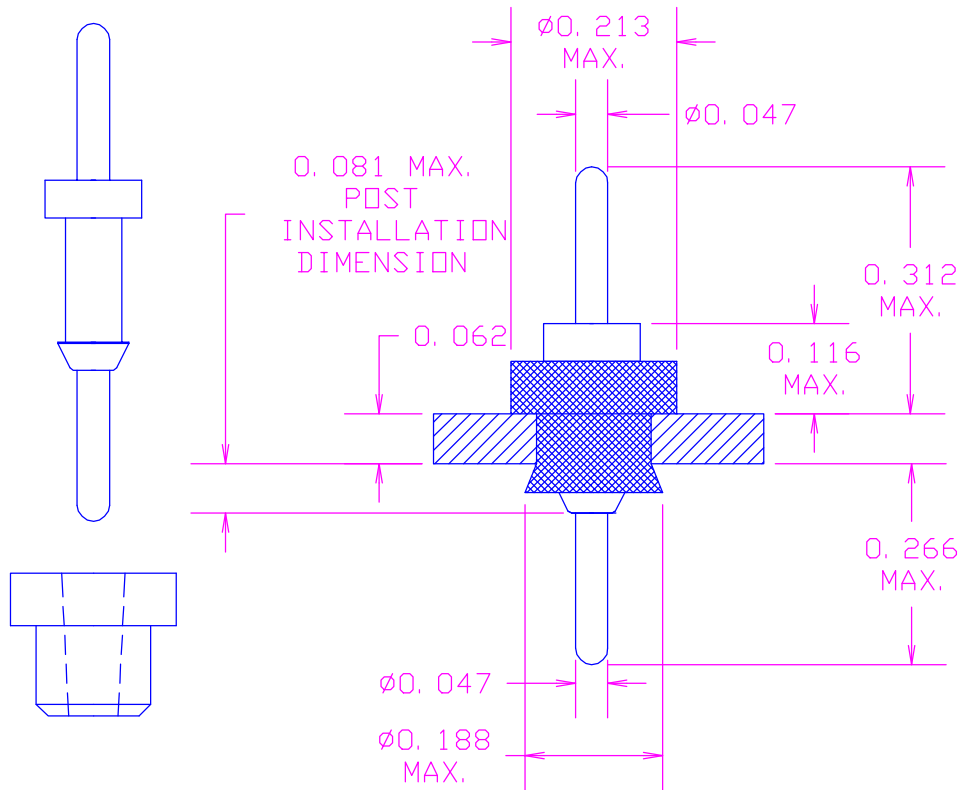


DATE	SYM	REVISION RECORD	AUTH.	DR.	CK.
12/5/00	-	ISSUED		NT	DG
11/5/02	1	UPDATE GOLD PLATING		NT	DG



<XX>COLOR CODE:
 10-BLACK
 11-BROWN
 12-RED
 13-ORANGE
 14-YELLOW
 15-GREEN
 16-BLUE
 17-VIOLET
 18-GRAY
 19-WHITE(NATURAL)

RECOMMENDED MOUNTING HOLE .142+.003/- .001

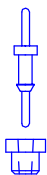
MATERIAL: PIN- BRASS PER ASTM B16,
 ALLOY C 36000, 1/2 HARD

BUSHING- PTFE PER ASTM D1710
 COLOR(XX)- SEE COLOR CODE

FINISH: PIN- .000010"MIN. GOLD PER ASTM B488,
 TYPE 3, CODE C, OVER .0001"MIN. NICKEL

NOTE: PIN AND BUSHING SUPPLIED UNASSAMBLED

ACTUAL SIZE



TOLERANCES	CONCORD ELECTRONICS CORPORATION		
DECIMAL ± .005	P/N	SCALE	30 GREAT JONES ST. NEW YORK N. Y. 10012
FRACTIONAL ± 1/64	TITLE TERMINAL		
± 5°	DATE 11/30/00	DRAWING NUMBER 1175-012-03XX	