

# PRODUCT INFORMATION PACKET



Model No: 114628.00

Catalog No: 114628.00

0.50 HP Explosion Proof Motor, 3 phase, 1800 RPM, 208-230/460 V, 56C Frame, EPNV  
Explosion Proof NEMA Motors



Regal and Leeson are trademarks of Regal Beloit Corporation or one of its affiliated companies.  
©2020 Regal Beloit Corporation, All Rights Reserved. MC017097E

The Regal logo is positioned in the bottom right area of the page. It features the word "REGAL" in a white, bold, sans-serif font, set against a dark grey, trapezoidal background. To the right of the logo is a vertical decorative element consisting of a blue-to-black gradient with a fine halftone dot pattern.

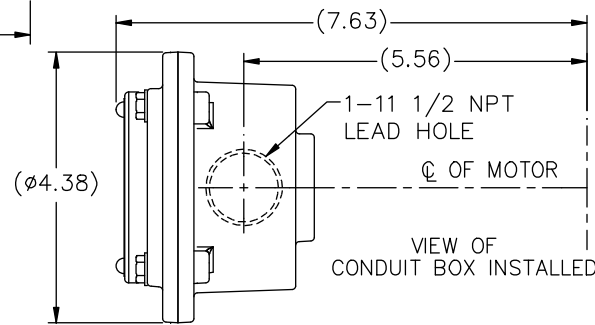
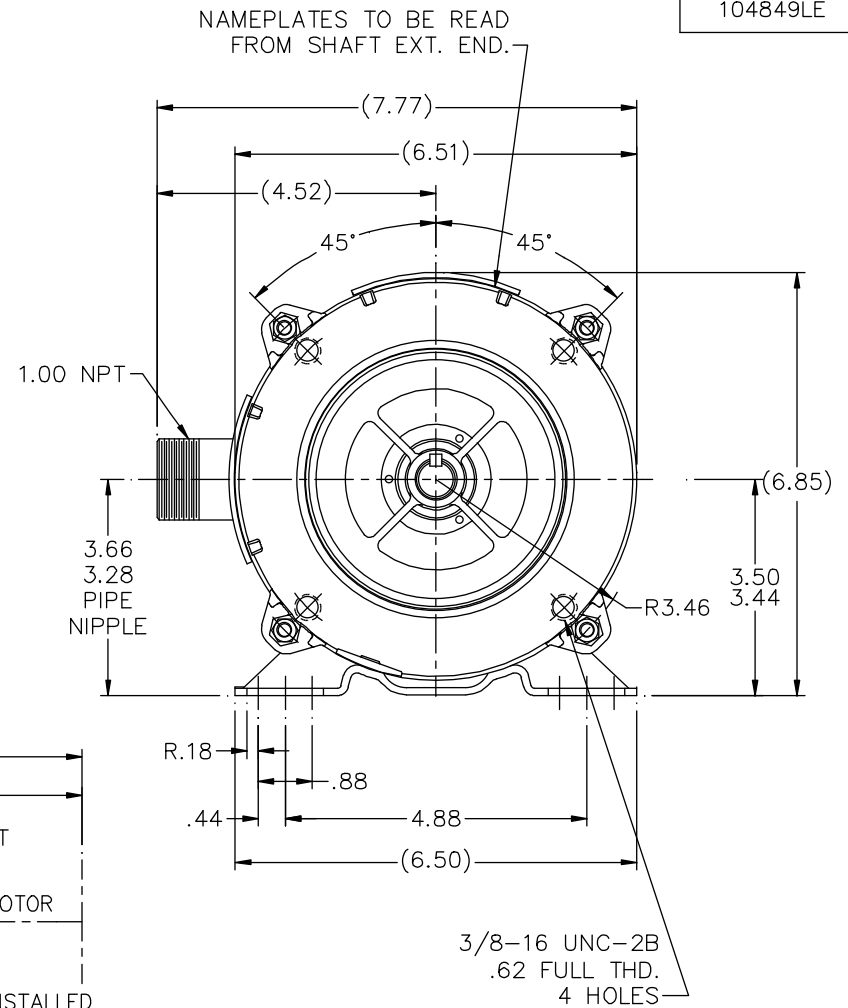
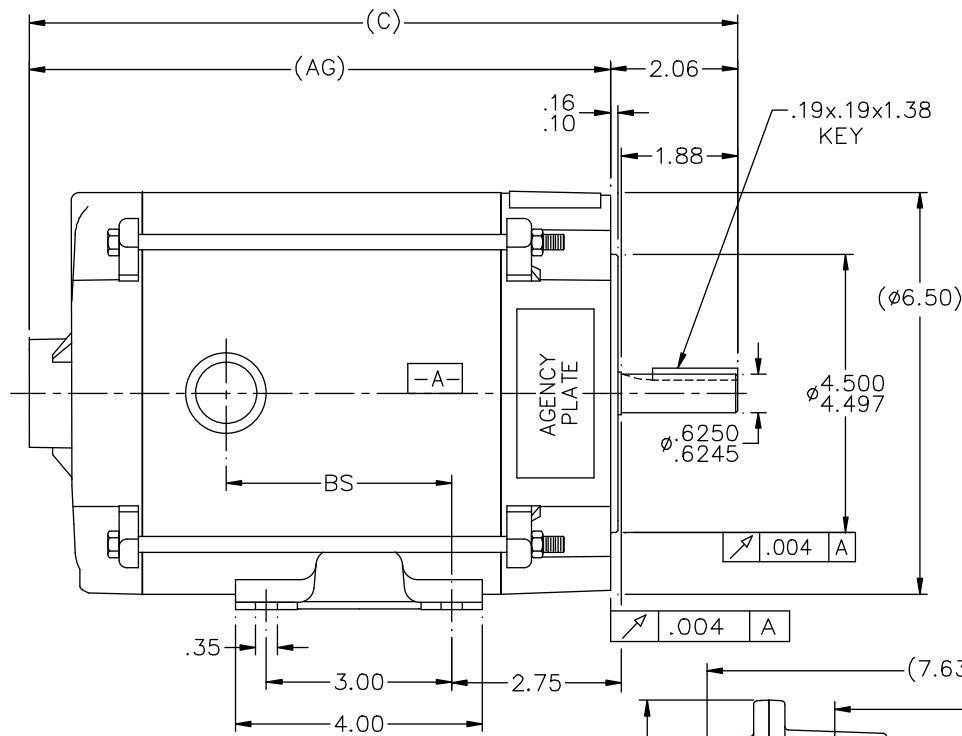


### Nameplate Specifications

Output HP	0.50 Hp	Output KW	0.37 kW
Frequency	60 Hz	Voltage	208-230/460 V
Current	1.8-1.6/0.80 A	Speed	1725 rpm
Service Factor	1	Phase	3
Efficiency	80 %	Power Factor	72
Duty	Continuous	Insulation Class	B
Design Code	B	KVA Code	L
Frame	56C	Enclosure	Explosion Proof Non Ventilated
Thermal Protection	Automatic	Ambient Temperature	40 °C
Drive End Bearing Size	6203	Opp Drive End Bearing Size	6203
UL	UL Listed And CSA Certified	CSA	Y
CE	N	IP Code	54
Hazardous Location	EXP PROOF CL I GR C&D CL II GR F&G T3C		

### Technical Specifications

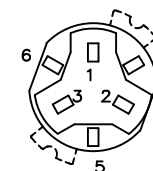
Electrical Type	Squirrel Cage Induction Run	Starting Method	Across The Line
Poles	4	Rotation	Reversible
Resistance Main	36.24 Ohms	Mounting	Rigid base
Motor Orientation	Horizontal	Drive End Bearing	Ball
Opp Drive End Bearing	Ball	Frame Material	Rolled Steel
Shaft Type	NEMA 56	Overall Length	12.47 in
Frame Length	6.81 in	Shaft Diameter	0.625 in
Shaft Extension	1.88 in	Assembly/Box Mounting	F1 ONLY
Outline Drawing	B-104849LE-681	Connection Drawing	A-EE7335-LE



DASH	(C)	(AG)	BS
631	11.97	9.91	4.15
681	12.47	10.41	4.65
731	12.97	10.91	5.15
781	13.47	11.41	5.65
831	13.97	11.91	6.15
881	14.47	12.41	6.65
931	14.97	12.91	7.15
981	15.47	13.41	7.65

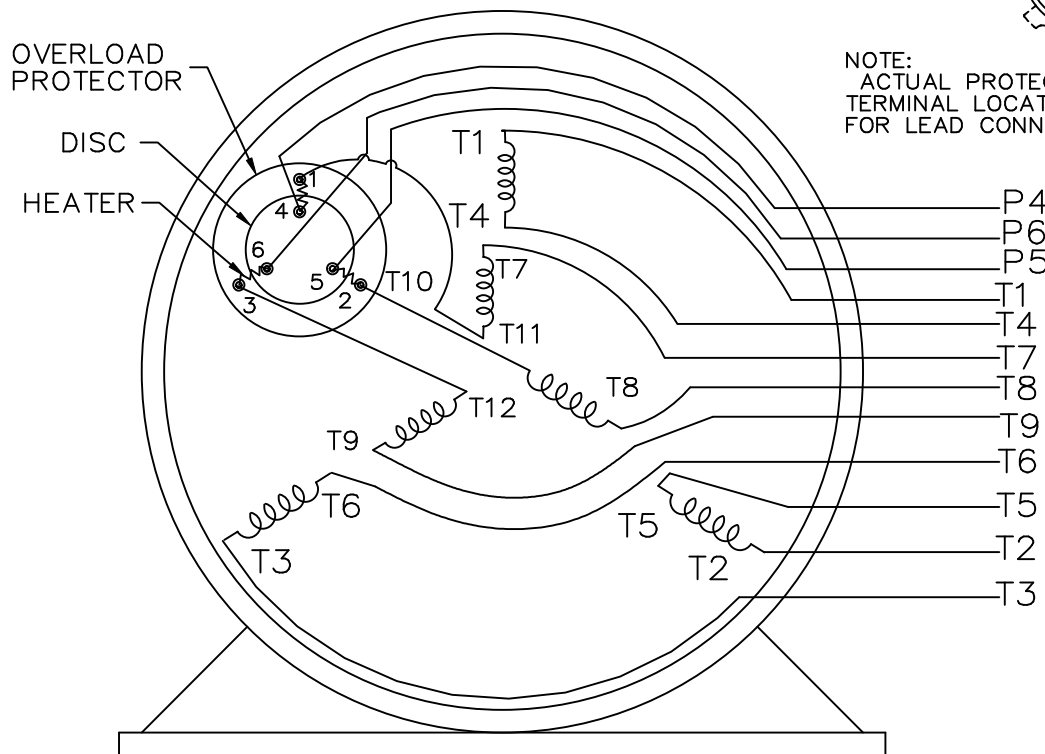
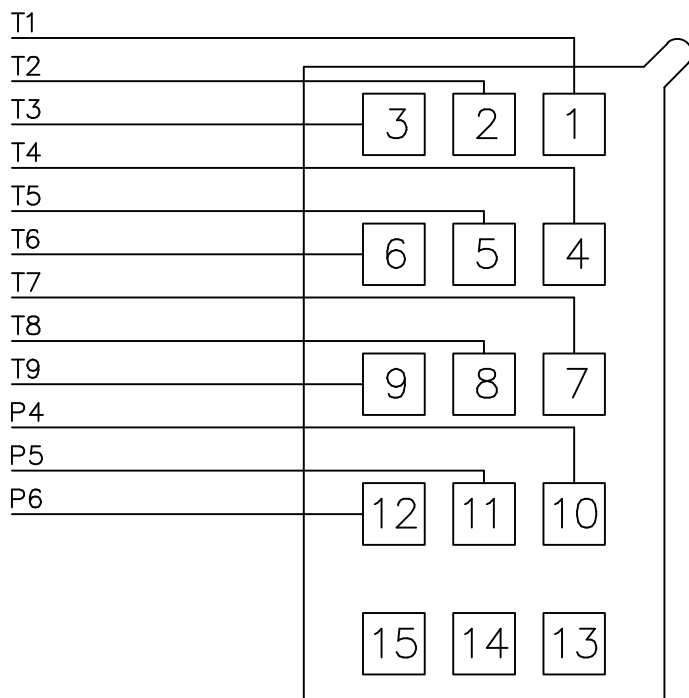
				TOLERANCES UNLESS SPECIFIED		LEESON		ELECTRIC MOTORS GEARMOTORS AND DRIVES		DRAWN RJW 06-25-2007		
				DEC.	INCHES			CHK	ML	06-25-2007		
				.X	±.1			APPD	GK	06-25-2007		
				.XX	±.03	TITLE OUTLINE - 'C' FACE		SCALE 1=2				
				.XXX	±.005	56 FR. - EXP. PR.		REF				
1	COND. BOX INSTALLED VIEW UPDATED PER ECR-0044571	UD	10/16/13	ST	.XXXX	±.0005	MAT'L.	PREV				
NO.	REVISION	BY	DATE	CHK	ANG	±1/2'	FINISH					
THIS DRAWING IN DESIGN AND DETAIL IS OUR PROPERTY AND MUST NOT BE USED EXCEPT IN CONNECTION WITH OUR WORK ALL RIGHTS OF DESIGN AND INVENTION ARE RESERVED THIS IS AN ELECTRONICALLY GENERATED DOCUMENT - DO NOT SCALE THIS PRINT				RFP	06-25-2007	CAD FILE	104849LE	SIZE	DRAWING NO.	PAGE	OF	REV.
				DIST	WP			B	104849LE	1	1	

THREE PHASE – DUAL VOLTAGE MOTOR  
WITH OVERLOAD PROTECTOR




NOTE:  
ACTUAL PROTECTORS  
TERMINAL LOCATIONS  
FOR LEAD CONNECTIONS

(BACK OF PLUG)



VIEW OF TERMINAL END

				TOLERANCES UNLESS SPECIFIED		 ELECTRIC MOTORS GEARMOTORS AND DRIVES	DRAWN HLB 06-22-2004	
				DEC.	INCHES		CHK ML 06-23-2004	
				.X	±.1		APPD JET 06-23-2004	
				.XX	±.02		SCALE 3=4	
				.XXX	±.005		REF MU51245	
1	REVISED LEAD CONNECTIONS CN 38726	RJW 12-01-2004	.XXXX	±.0005	MAT'L.	FMF 116524.00		
NO.	REVISION	BY & DATE	CHK	ANG	±7'30"	FINISH	PREV PRO40027	
THIS DRAWING IN DESIGN AND DETAIL IS OUR PROPERTY AND MUST NOT BE USED EXCEPT IN CONNECTION WITH OUR WORK ALL RIGHTS OF DESIGN AND INVENTION ARE RESERVED THIS IS AN ELECTRONICALLY GENERATED DOCUMENT - DO NOT SCALE THIS PRINT				RFP 06-23-2004	CAD FILE ee7335w_le	SIZE A	DRAWING NO. EE7335W-LE	PAGE OF 1
				DIST WP-LE			REV. 1	



P.O. BOX 8003  
WAUSAU, WI 54401-8003  
PH. 715-675-3311

DATA VOLTS: 460

CERTIFICATION DATA SHEET

CONN. DIAGRAM: A-EET7335-LE  
OUTLINE: B-104849LE-681  
WINDING: ZT471

R16 3

CAT #: 114628.00

TYPICAL MOTOR PERFORMANCE DATA

HP	KW	SYNC RPM	FL RPM	FRAME	ENCLOSURE	TYPE	KVA CODE	DESIGN	
0.5	0.37	1800	1725	56C	EPNV	TTR	L	B	
PH	HZ	VOLTS	AMPS	START TYPE	DUTY	INSL	S.F.	AMB	ELEV.
3	60/50	208-230/460#190/380	1.8-1.6/.8&1.8/1.91	ACROSS THE LINE	CONT	B	1.15	40	3300
F.L. EFF	82.8	3/4 LD EFF	78.6	1/2 LD EFF	75.6	GTD EFF	77.0	ELECT. TYPE	
F.L. PF	70.6	3/4 LD PF	62.8	1/2 LD PF	52.3	SQ CAGE IND RUN			
F.L. TORQUE	LR AMPS @ 460 V	4.6 LB-FT	303%	5.8 LB-FT	382%	50	F.L. RISE (°C)		
1.52 LB-FT	5.6								
PRESSURE @ 3	POWER	ROTOR WK²	MAX. LOAD WK²	SAFE STALL TIME	STARTS/HOUR	MOTOR WGT			
60 DBA	69 DBA	0.06 LB-FT²	0 LB-FT²	15 SEC.	0	25 LB.			

\*\*\* SUPPLEMENTAL INFORMATION \*\*\*

DE BRACKET TYPE	ODE BRACKET TYPE	MOUNT TYPE	MOTOR ORIENTATION	SEVERE DUTY	HAZARDOUS LOCATION	DRIIP COVER	SCREENS	PAINT
C-FACE	STANDARD	RIGID	HORIZONTAL	NO	DEF CL I GR C&D CL II GF	NO	NONE	JE-LEESON/ENAM
BEARINGS	GREASE	SHAFT TYPE	SPECIAL DE	SPECIAL ODE	SHAFT MATERIAL	FRAME MATERIAL		
DE ODE	BALL	POLYREX EM	STANDARD 56	NONE	1144 STRESSPROOF (C-223)	ROLLED STEEL		
6203	6203							
THERMOSTATS	PROTECTORS	WDG RTD's	BRG RTD's	THERMISTORS	CONTROL	SPACE HEATERS		
NONE	AUTOMATIC	NONE	NONE	NONE	FALSE	NA		
R1 (ohms/ph)	R2 (ohms/ph)	X1 (ohms/ph)	X2 (ohms/ph)	Xm (ohms/ph)	VIBRATION (in/sec)	FLOAT		
20.377	15.041	24.237	17.936	518.219	0.150	ODE		

* N O T E S	INVERTER TORQUE: NONE	
	INV. HP SPEED RANGE: NONE	
	ENCODER: NONE	NONE PPR
	NONE	
	NONE	
	NONE	
	BRAKE: NONE	NONE
	NONE	
	FT-LB: NA	NONE
	VOLTAGE: NONE	
	UL: Y-(LEESON UL REC)	

DATE:	1/23/2018	HZ:
-------	-----------	-----

