

PRODUCT INFORMATION PACKET



Model No: C6T17VK1H

Catalog No: 113587.00

3/4HP..1725RPM.56.TENV.208-230/460V.3PH.60HZ.CONT.NOT.40C.1.15SF.RIGID
C.WASHGUARD.C6T17VK1H

General Purpose



Regal and Leeson are trademarks of Regal Beloit Corporation or one of its affiliated companies.

©2018 Regal Beloit Corporation, All Rights Reserved. MC017097E



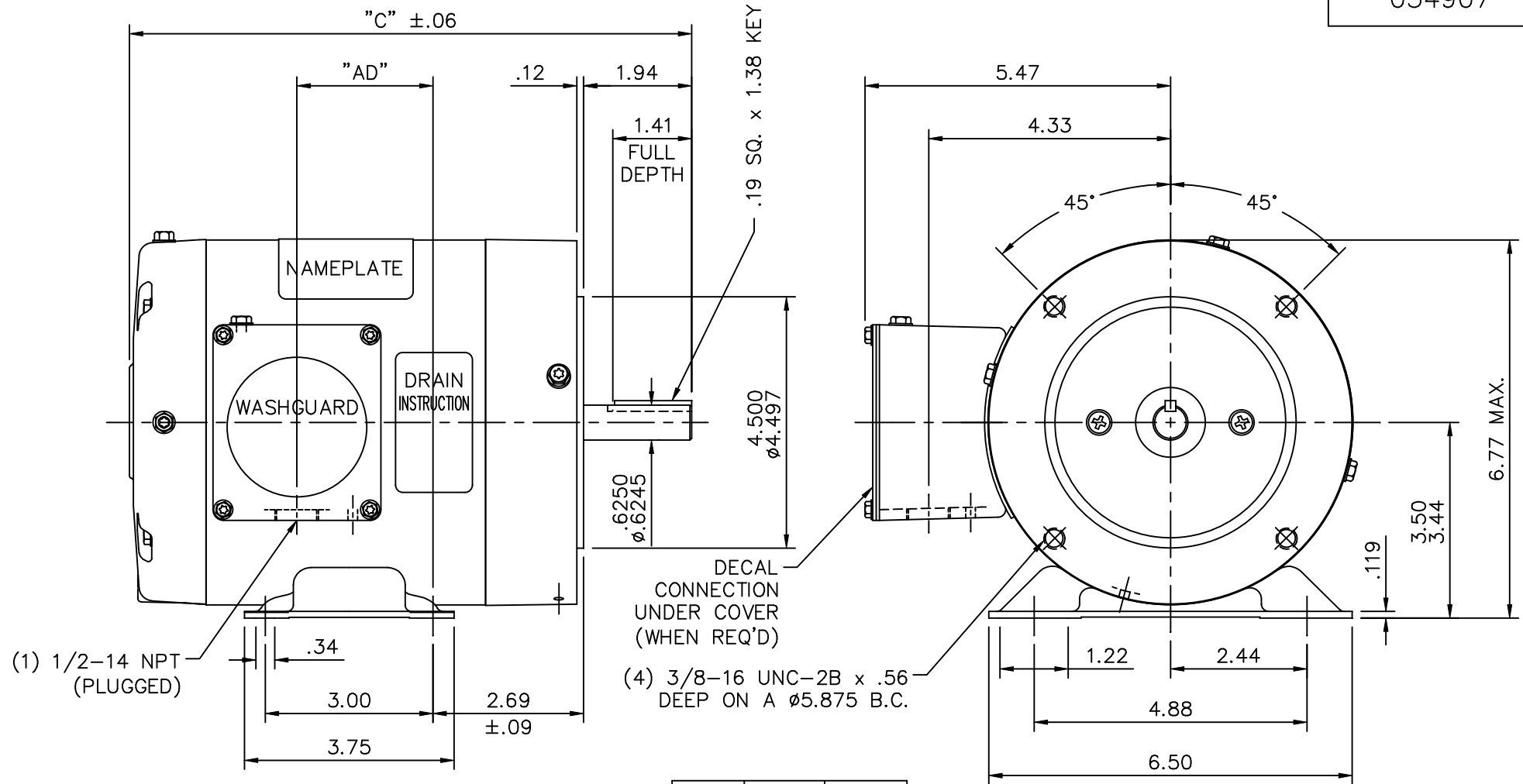


Nameplate Specifications

Output HP	0.75 Hp	Output KW	0.56 kW
Frequency	60 Hz	Voltage	208-230/460 V
Current	2.7-2.5/1.3 A	Speed	1725 rpm
Service Factor	1.15	Phase	3
Efficiency	80 %	Duty	Continuous
Insulation Class	F	Design Code	B
KVA Code	L	Frame	56C
Enclosure	Totally Enclosed Non Ventilated	Overload Protector	No
Ambient Temperature	40 °C	Drive End Bearing Size	6205
Opp Drive End Bearing Size	6203	UL	Recognized
CSA	Y	CE	Y
IP Code	55		

Technical Specifications

Electrical Type	Squirrel Cage Induction Run	Starting Method	Across The Line
Poles	4	Rotation	Reversible
Mounting	Rigid base	Motor Orientation	HORIZONTAL
Drive End Bearing	BALL	Opp Drive End Bearing	BALL
Frame Material	Rolled Steel	Shaft Type	NEMA 56
Overall Length	10.58 in	Frame Length	5.50 in
Shaft Diameter	0.625 in	Shaft Extension	1.88 in
Assembly/Box Mounting	F1 ONLY		
Outline Drawing	034907-550	Connection Diagram	005010.01



SPECIAL FEATURES:

- 1) SHAFT SEALS & V-RING
- 2) DRAIN HOLES IN BOTH ENDBELLS & CONDUIT BOX
- 3) GASKETS THROUGHOUT
- 4) STAINLESS STEEL SHAFT, HARDWARE & NAMEPLATE

DASH NO.	"C"	"AD"
500	10.08	2.44
550	10.58	2.94
600	11.08	3.44
650	11.58	3.94

MAXIMUM FACE RUNOUT .004 T.I.R.
 MAXIMUM PILOT ECCENTRICITY .004 T.I.R.
 PERMISSIBLE SHAFT RUNOUT .002 T.I.R.

		TOLERANCES UNLESS SPECIFIED		LEESON	ELECTRIC MOTORS GEARMOTORS AND DRIVES	DRAWN RDW 12/12/01		
		DEC.	INCHES			CHK		
		.X	±.1			APPD KMM 12/12/01		
03	SHAFT END E.B. WAS 021255-19 PER ECO 04-1702	LST 9/17/04	.XX	±.03	TITLE	OUTLINE - 56C FRAME TENV - RIGID "C"	SCALE 3=8	
02	REVISED OUTLINE TO CURRENT STNDS.	RDW 2/11/03	SW	.XXX	±.005	REF	033694	
01	L.E. ENDBELL WAS 021209.27	KMM 8/19/02		.XXXX	±.0005	MAT'L.	WASHGUARD	
NO.	REVISION	BY & DATE	CHK	ANG	±1/2'	FINISH	PREV	
THIS DRAWING IN DESIGN AND DETAIL IS OUR PROPERTY AND MUST NOT BE USED EXCEPT IN CONNECTION WITH OUR WORK ALL RIGHTS OF DESIGN AND INVENTION ARE RESERVED THIS IS AN ELECTRONICALLY GENERATED DOCUMENT - DO NOT SCALE THIS PRINT				RFP 12/12/01	CAD FILE 034907	SIZE A	DRAWING NO. 034907	REV. 03

005010-01

VIEW FROM OUTSIDE OF MOTOR AT SWITCH END.



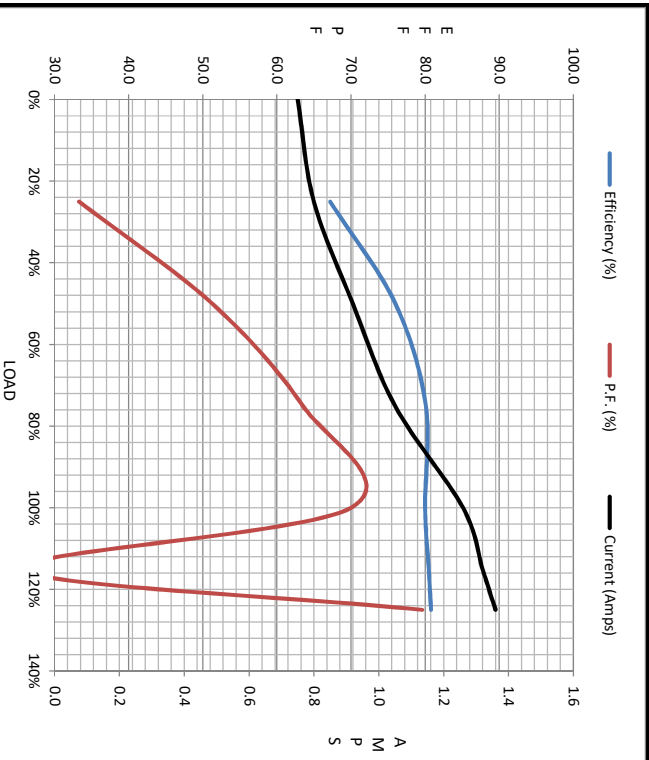
VOLTAGE	L1	L2	L3	JOIN & INSULATE
HIGH	T1	T2	T3	(T4,T7) (T5,T8) (T6,T9)
LOW	T1,T7	T2,T8	T3,T9	T4,T5,T6

				TOLERANCES UNLESS SPECIFIED		Regal Beloit America, Inc.		DRAWN RDW 04/12/02				
				DEC.	INCHES			CHK				
				.X	±.1			APPD				
				.XX	±.01			SCALE 1=1				
				.XXX	±.005	TITLE		REF FIG.2-51				
A	UPDATED TO REGAL LOGO			SAJ	06/26/15	AJY	.XXXX	±.0005	MAT'L. DECAL - 004014	FMF		
NO.	REVISION			BY & DATE	CHK	ANG	±1/2"	FINISH	PREV			
THIS DRAWING IN DESIGN AND DETAIL IS OUR PROPERTY AND MUST NOT BE USED EXCEPT IN CONNECTION WITH OUR WORK ALL RIGHTS OF DESIGN AND INVENTION ARE RESERVED THIS IS AN ELECTRONICALLY GENERATED DOCUMENT - DO NOT SCALE THIS PRINT				RFP	04/12/02		CAD FILE	00501001		SIZE	DRAWING NO.	REV.
				DIST	BRF-NLV			A	005010-01		A	



Motor Load Data									
Load	0%	25%	50%	75%	100%	115%	125%	LR	
Current (Amps)	0.75	0.80	0.92	1.05	1.26	1.32	1.36	8.8	
Torque (ft-lb)	0.00	0.56	1.13	1.69	2.25	3.2	2.81	6.7	
RPM	1800	1791	1780	1771	1759	1,740	1747	0	
Efficiency (%)		67.2	76.0	80.1	80.0	80.5	80.8		
P.F. (%)	12.6	33.3	51.3	63.5	70.0	25.6	79.6	0.0	

Motor Speed Data						Information Block			
	LR	Pull-Up	BD	Rated	Idle	HP	Sync. RPM	Frame	Enclosure
Speed (RPM)	0	850	1300	1759	1800	0.8	1800	140	TENV
Current (Amps)	8.8	8.0	4.8	1.26	0.75				
Torque (ft-lb)	6.7	6.6	8.8	2.25	0.00				
Construction	TTR		208-230/460		V				
Voltage			60		Hz				
Frequency			B						
Design			L						
LR Code letter			1.15		°C				
Service Factor			80		°C				
Temp Rise @ FL			CONT						
Duty			40		°C				
Ambient			1,000		feet				
Elevation			0.09		LB-Ft ³				
Rotor/Shaft wk ²			T634245		NR				
Ref Wdg			0		dB(A)				
Sound Pressure @ 1M			NONE						
VFD Rating			034907-550						
Outline Dwg			005010.01						
Conn. Diag			0						
Additional Specifications:			EQUIV CKT (OHMS / PHASE)						
	R1	R2	X1	X2	Xm				
	0.0000	0.0000	0.0000	0.0000	0.0000				



LR	Pull-Up	BD	Rated	Idle
0	850	1300	1759	1800
8.8	8.0	4.8	1.26	0.75
6.7	6.6	8.8	2.25	0.00

