

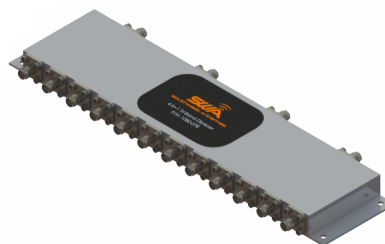
## Overview

Southwest Antennas Part # 1080-078 is a multi-band triplexer bank designed for use with L, S, and C band radio systems that operate at 1.75 - 1.85 GHz, 2.2 - 2.29 GHz, 4.4 - 4.9 GHz. This product combines four triplexers into a single housing to help simplify complex radio and antenna installations.

This triplexer allows multi-band radio systems to utilize three antennas that are optimized for their specific transmit and receive band, with a design that offers low pass band insertion loss and excellent out-of-band rejection (-45 dBi maximum). Designed for both transmit and receive applications, the triplexer allows transmissions to be routed automatically to the correct L, S, or C Band antenna. For receive applications, the triplexer combines all band signals into a single common output for installation simplicity.

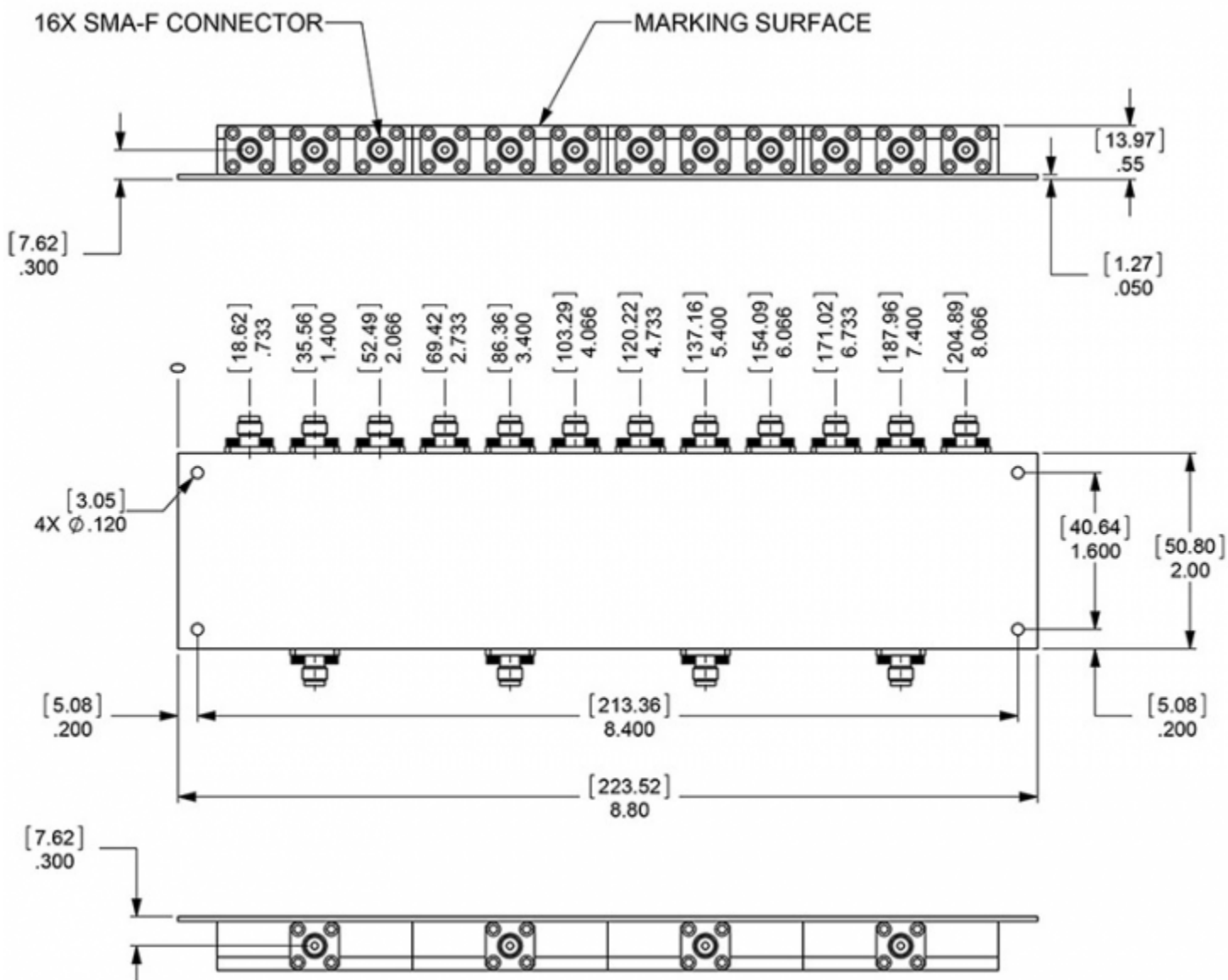
## Features:

- L, S & C Dual Band Triplexer:
  - 1.75 - 1.85 GHz
  - 2.2 - 2.29 GHz
  - 4.4 - 4.9 GHz
- Low Pass Band Insertion Loss
- 16x SMA(f) RF Connectors
  - 4x Radio RF Connectors
  - 12x Antenna RF Connectors
- Excellent Out of Band Rejection
- Small Form Factor
- Machined Aluminum Housing with Nickel Plating
- Allows Multi-Band Radios to Send Each Band to Specific Antenna
- Combines Three Band Specific Antenna Signals Into a Single Common Output



### Triplexer Specifications

Parameter	Value	Units	Tolerance
<b>Impedance</b>	50	Ohms	
<b>Maximum VSWR</b>	1.5:1	Ratio	Over all operating frequencies
<b>CH1 Pass Band</b>	1.75 – 1.85 1,750 – 1,850	GHz MHz	
<b>CH1 Passband Insertion Loss</b>	1	dBa	1,750 - 1,850 MHz
<b>CH1 Rejection</b>	-45	dBa	Min @ 2,200 - 4,900 MHz
<b>CH2 Pass Band</b>	2.2 – 2.29 2,200 – 2,290	GHz MHz	
<b>CH2 Passband Insertion Loss</b>	1	dBa	2,200 - 2,290 MHz
<b>CH2 Rejection</b>	-40	dBa	Min @ DC - 1,850 MHz
<b>CH2 Rejection 2</b>	-45	dBa	Min @ 4,400 - 4,900 MHz
<b>CH3 Pass Band</b>	4.4 – 4.9 4,400 – 4,900	GHz MHz	
<b>CH3 Rejection</b>	-45	dBa	Min @ DC - 2,290 MHz
<b>Product Length</b>	8.80 / 223.52	inches / mm	
<b>Product Width</b>	2.00 / 50.80	inches / mm	
<b>Product Height</b>	0.55 / 13.97	inches / mm	
<b>Product Weight</b>	8.4 / 239.3	oz / grams	
<b>RF Connectors</b>	16x SMA(f) RF Connectors (4x for radios, 12x for antennas)		



### Engineering Drawing

All dimensions in inches, metric in brackets [mm]