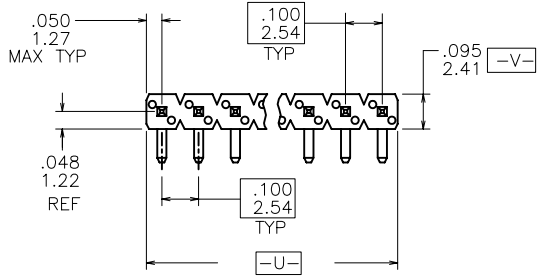
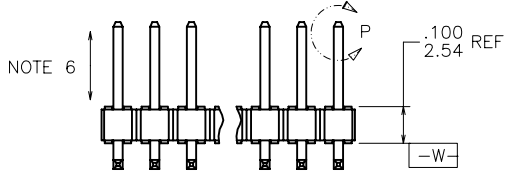


PRODUCT NUMBER
10118650-XXX XXXXLF

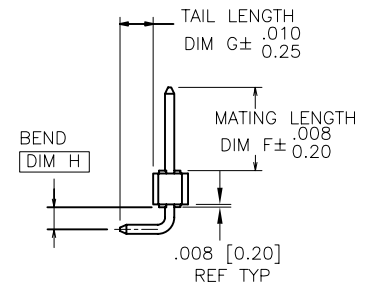
- LEAD FREE
SEE NOTE 1,11
- PACKAGING OPTION
SEE NOTE 1
- INDICATE DIFFERENT MATING LENGTH
AND TAIL LENGTH AND POLARIZED PIN
AND OTHER INFORMATION
- NO OF
POSITIONS
SEE NOTE 2
- PIN PLATING
SEE SHEET 2
- BASE PART NO.



TOP VIEW



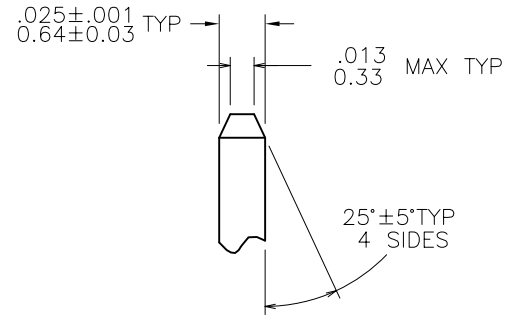
SIDE VIEW



END VIEW

⊕	∅.020/0.51	M	U	M	V	S	W
---	------------	---	---	---	---	---	---

NOTE 4



DETAIL P
TYP BOTH ENDS

mat'l. code NOTE 2 & 3		surface ISO 1302	tolerance ISO 406 ISO 1101	projection INCH/MM	product family BERGSTIK
ltr	ecn no	dr	date	tolerances unless otherwise specified	title
A		ZK	09/02/11	angles .XX±.01/XX±.3	BERGSTIK® II HEADER .100 SR R/A SELF-RET
B	ELX-N-011176	J.Z	03/31/12	linear .XXX±.0005/XX±.13	
C	ELX-N-19714	J.H	12/11/14	0'±2' .XXX±.0020/XXX±.05	
sheet index		revision	C	dr ZK.HU 09/02/11	scale 2:1
		sheet	1-3	enr ZK.HU 09/02/11	FCJ
				chr J.ZHOU 09/02/11	dwg no 10118650
				appd R.BIAN 09/02/11	sheet. 1 of 3 size A3
					type Product Customer Drawing



Copyright FCI

PIN PLATING CODES:

XXXX-1YY	30u"/0.76u MIN (SEE NOTE 12) OVER 50u"/1.27u MIN Ni
XXXX-2YY	15u"/0.38u MIN (SEE NOTE 12) OVER 50u"/1.27u MIN Ni
XXXX-3YY	50u"/1.27u MIN (SEE NOTE 12) OVER 50u"/1.27u MIN Ni
XXXX-4YY	100u"/2.54u MIN Sn OVER 50u"/1.27u MIN Ni (SEE NOTE 1,13)

NOTES

① PART NUMBER OPTIONS:

PIN PLATING CODES (SEE ABOVE)

NUMBER OF POSITION:

ANY NUMBER OF POSITIONS FROM 2 THRU 36.

PACKAGING:

PACKAGED IN POLY BAGS.

EIGHT DIGIT PART NUMBERS FOLLOWED BY A "T" ARE PACKAGED IN TUBES. SEE SPECIFIC PART NUMBERS FOR AVAILABILITY.

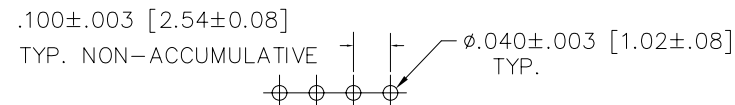
LEAD FREE:

ADD "LF" SUFFIX AT THE END OF PART NUMBER FOR LEAD FREE OPTION.

② BODY MATERIAL:
HIGH TEMPERATURE THEROPLASTIC.

PART NUMBERS WILL WITHSTAND EXPOSURE TO 260°C PEAK TEMPERATURE FOR 20 SECONDS IN WAVE SOLDER, INFRA-RED OR VAPOR PHASE SOLDER PROCESS.

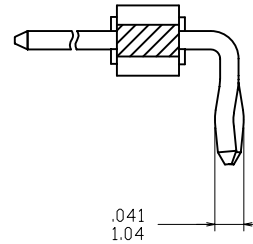
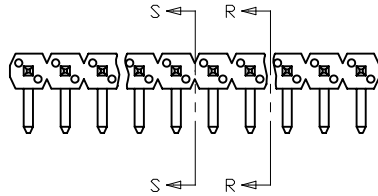
- ③. PIN MATERIAL: COPPER ALLOY.
- ④. MEASURED WITH PART IN RESTRAINED CONDITION.
- ⑤. TWO SIDES OF PIN TIPS NOT PLATED. TYPICAL BOTH ENDS.
- ⑥. 2LBS/0.9KG MIN PIN RETENTION IN EITHER DIRECTION.
- ⑦. ±.010/0.25 ON DIM "F" APPLIES TO THIS PART ONLY.
- ⑧. 5LB/2.3KG MAX INSERTION FORCE AND .25LB/.1KG MIN RETENTION FORCE PER RETENTIVE PIN USING .062/1.57 THICK CIRCUIT BOARDS AND RECOMMENDED HOLE PATTERN.
- ⑨. SECTION R-R DIMENSIONS ONLY APPLY TO RETENTION. PIN POSITIONS FOR 3 POSITION PARTS AND LARGER. RETENTION PIN POSITIONS LOCATED AT MANUFACTURES OPTION.
- ⑩. SECTION S-S DIMENSIONS APPLY TO DUAL RETENTION PIN POSITIONS ONLY. SEE PRODUCT PART NUMBER FOR SINGLE OR DUAL SIDE RETENTION. LOCATED AT MANUFACTURER'S OPTION.
- ⑪. THESE PRODUCTS MEETS EUROPEAN UNION DIRECTIVES AND OTHER COUNTRY REGULATION AS DESCRIBED IN GS-22-008.
- ⑫. PLATING OPTIONS:
PERFORMANCE PLATING WILL BE EITHER GOLD OR GXT ON POST OR TAIL, OPTIONALLY (78~295u"/2~7.5u) TIN ON TAIL.
- ⑬. THIS PRODUCT HAS 100% TIN PLATING IN THE INTERFACE AND HAS NOT BEEN TESTED FOR WHISKER GROWTH IN ALL INTERCONNECT ENVIRONMENTS.



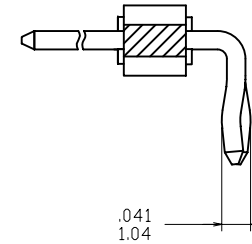
RECOMMENDED HOLE PATTERN

mat'l. code		surface		tolerance		projection		product family	
NOTE 2 & 3		ISO 1302		ISO 406		INCH/MM		BERGSTIK	
ltr		ecn no		dr		date		title	
c				angles		linear		BERGSTIK® II HEADER	
				0°±2'		.XX±.01/.X±.3		.100 SR R/A SELF-RET	
				dr		ZK.HU		scale 2:1	
				enr		ZK.HU		dwg no	
				chr		J.ZHOU		sheet. 2 of 3	
				appd		R.BIAN		size	
								10118650	
sheet		revision						type	
index		sheet						Product Customer Drawing	

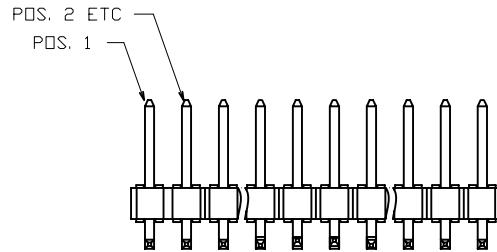
PRODUCT NUMBER	MATING LENGTH		TAIL LENGTH		BEND DIM		POLARIZED PIN	RETENTION	LOCATION	LF OPTION
	DIM F	DIM F	DIM G	DIM G	DIM H	DIM H				
10118650-XY001XLF	0.150	3.80	0.150	3.80	0.060	1.52	-	YES		NOTE 1,11
10118650-XY002XLF	0.150	3.80	0.150	3.80	0.060	1.52	2,4,6	YES		
10118650-XY003XLF	0.100	2.54	0.120	3.05	0.060	1.52	2,4,6,8,10	NO		
10118650-XY004XLF	0.120	3.05	0.130	3.30	0.060	1.52	4	NO		
10118650-X03005XLF	0.150	3.80	0.150	3.80	0.060	1.52	2	YES	1,3	
10118650-X05006XLF	0.150	3.80	0.150	3.80	0.060	1.52	————	YES	3,4	
10118650-X06007XLF	0.150	3.80	0.150	3.80	0.060	1.52	————	YES	3,4	
10118650-X07008XLF	0.150	3.80	0.150	3.80	0.060	1.52	2,4,6	YES	3,5	



SECTION R-R
NOTE 9



SECTION S-S
NOTE 10



mat'l. code		surface		tolerance		projection		product family	
NOTE 2 & 3		ISO 1302 ✓		ISO 406		ISO 1101		BERGSTIK	
ltr		ecn no		dr		date		title	
C								BERGSTIK® II HEADER	
		angles		linear		INCH/MM		.100 SR R/A SELF-RET	
		0°±2'		.XX±.01/.X±.3		scale 2:1		dwg no	
		dr		ZK.HU		09/02/11		sheet. 3 of 3	
		enr		ZK.HU		09/02/11		size	
		chr		J.ZHOU		09/02/11		10118650	
		appd		R.BIAN		09/02/11		A3	
sheet index		revision sheet						type Product Customer Drawing	