



RAYCHEM

TE Internal #: 3008233001

Hook Up Wire, Spec 100G, Operating Voltage 1300 V / 750 V, Tin-Plated Copper, 12 AWG Wire Size, 3.31 mm² Wire Size

[View on TE.com >](#)

Wire & Cable > Hook Up Wire



Cable Type: **Spec 100G**

Operating Voltage: **750 V, 1300 V**

Wire & Cable Insulation Material: **Halogen-Free Polymer**

Conductor Material: **Tin-Plated Copper**

Wire Size: **12 AWG**

Features

Product Type Features

Cable Style	Primary
-------------	---------

Configuration Features

Number of Conductors	1
----------------------	---

Electrical Characteristics

Operating Voltage	750 V, 1300 V
-------------------	---------------

Body Features

Wire & Cable Insulation Material	Halogen-Free Polymer
Conductor Material	Tin-Plated Copper
Wire Color (Base)	Yellow
Wire Color (Stripe)	Green

Dimensions

Outside Cable Diameter	2.8 mm[.11 in]
Wire Size	3.31 mm ²

Usage Conditions

Cable Type	Spec 100G
Operating Temperature Range	-55 – 125 °C

Other

--	--



Product Source	UK
----------------	----

Product Compliance

[For compliance documentation, visit the product page on TE.com>](#)

EU RoHS Directive 2011/65/EU	Compliant
EU ELV Directive 2000/53/EC	Compliant
China RoHS 2 Directive MIIT Order No 32, 2016	No Restricted Materials Above Threshold
EU REACH Regulation (EC) No. 1907/2006	Current ECHA Candidate List: JUNE 2024 (241) Candidate List Declared Against: JAN 2024 (240) Does not contain REACH SVHC
Halogen Content	Out of Scope - excluded from Halogen requirements
Solder Process Capability	Not applicable for solder process capability

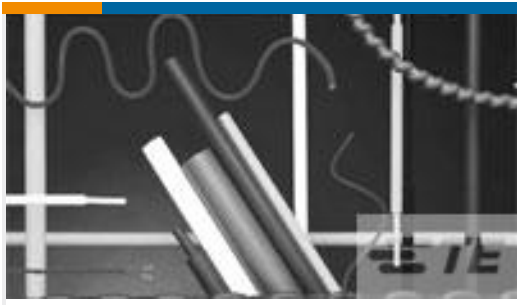
Product Compliance Disclaimer

This information is provided based on reasonable inquiry of our suppliers and represents our current actual knowledge based on the information they provided. This information is subject to change. The part numbers that TE has identified as EU RoHS compliant have a maximum concentration of 0.1% by weight in homogenous materials for lead, hexavalent chromium, mercury, PBB, PBDE, DBP, BBP, DEHP, DIBP, and 0.01% for cadmium, or qualify for an exemption to these limits as defined in the Annexes of Directive 2011/65/EU (RoHS2). Finished electrical and electronic equipment products will be CE marked as required by Directive 2011/65/EU. Components may not be CE marked. Additionally, the part numbers that TE has identified as EU ELV compliant have a maximum concentration of 0.1% by weight in homogenous materials for lead, hexavalent chromium, and mercury, and 0.01% for cadmium, or qualify for an exemption to these limits as defined in the Annexes of Directive 2000/53/EC (ELV). Regarding the REACH Regulation, the information TE provides on SVHC in articles for this part number is based on the latest European Chemicals Agency (ECHA) 'Guidance on requirements for substances in articles' posted at this URL: <https://echa.europa.eu/guidance-documents/guidance-on-reach>

Compatible Parts



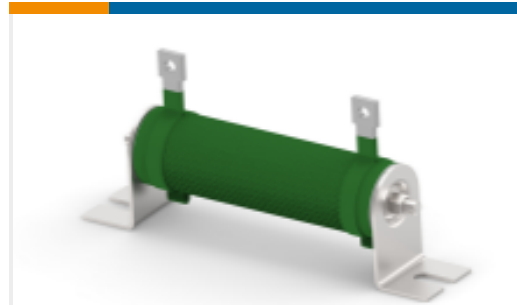
Customers Also Bought



TE Part #5069934006
CGPT-2.4/1.2-9-SP



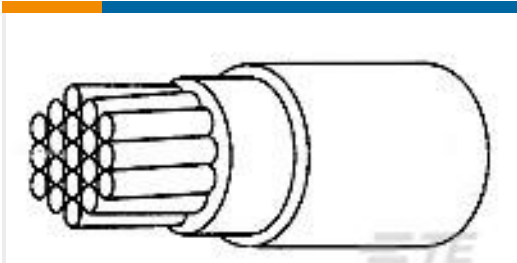
TE Part #493995-000
B-008-14



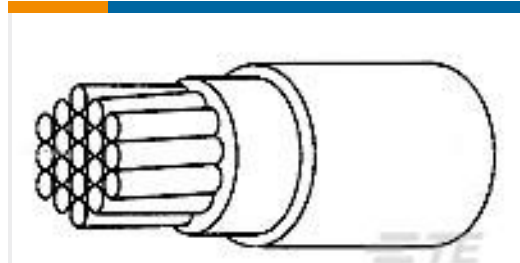
TE Part #2-1879447-6
Wirewound Resistor: Mineral, 2.5 Kw



TE Part #4419990001
D-SCE-1K-3.2-50-S2-4



TE Part #9584213001
100G0111-0.60-2



TE Part #1002413001
100G0111-0.40-3



TE Part #577411-000
200Z3600-19-B-TC03AI

Documents

Product Drawings

[100G0111-3.00-45](#)

English

Datasheets & Catalog Pages

[1654025_Sec9_Zerohal100G](#)

English