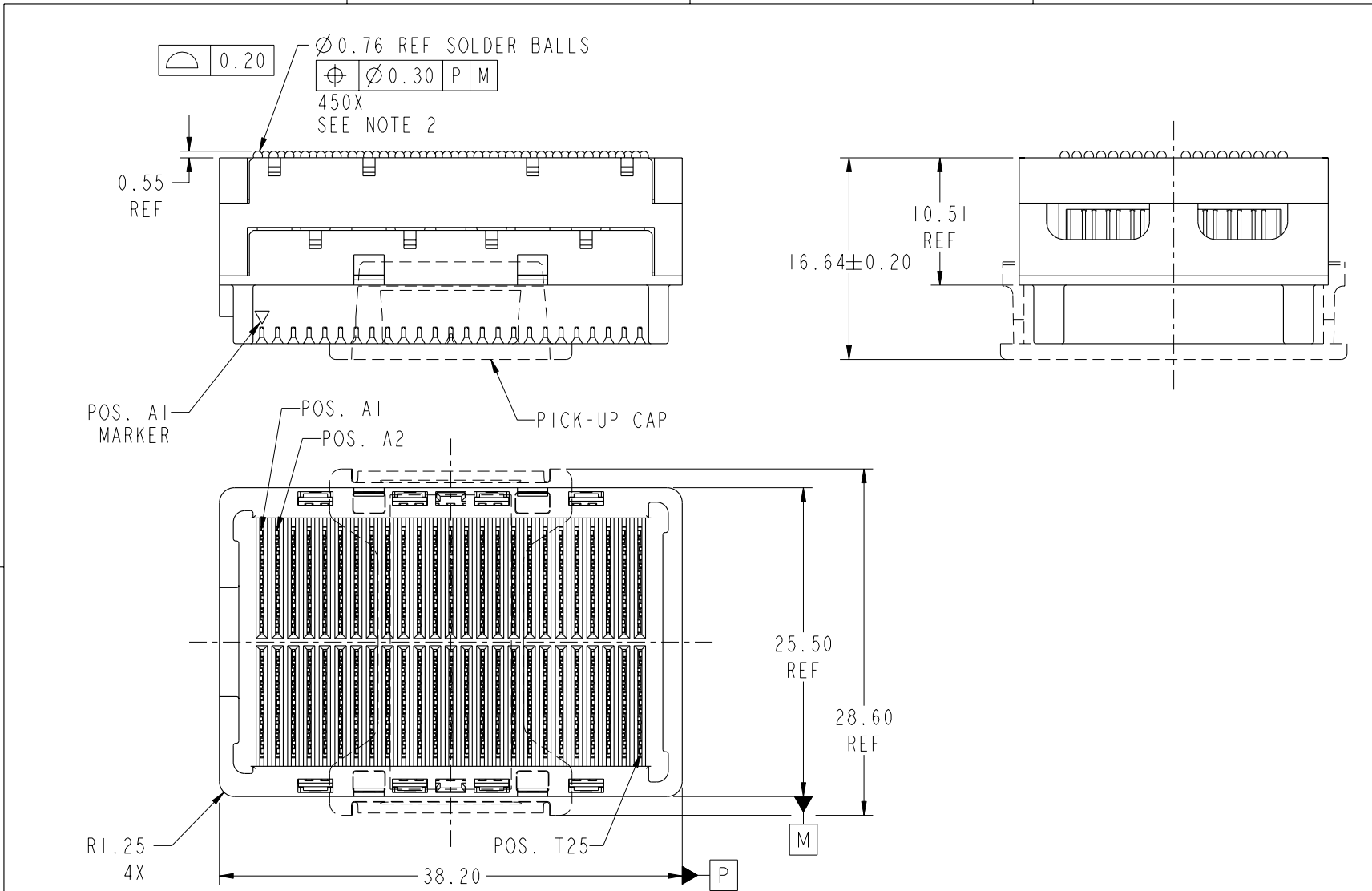


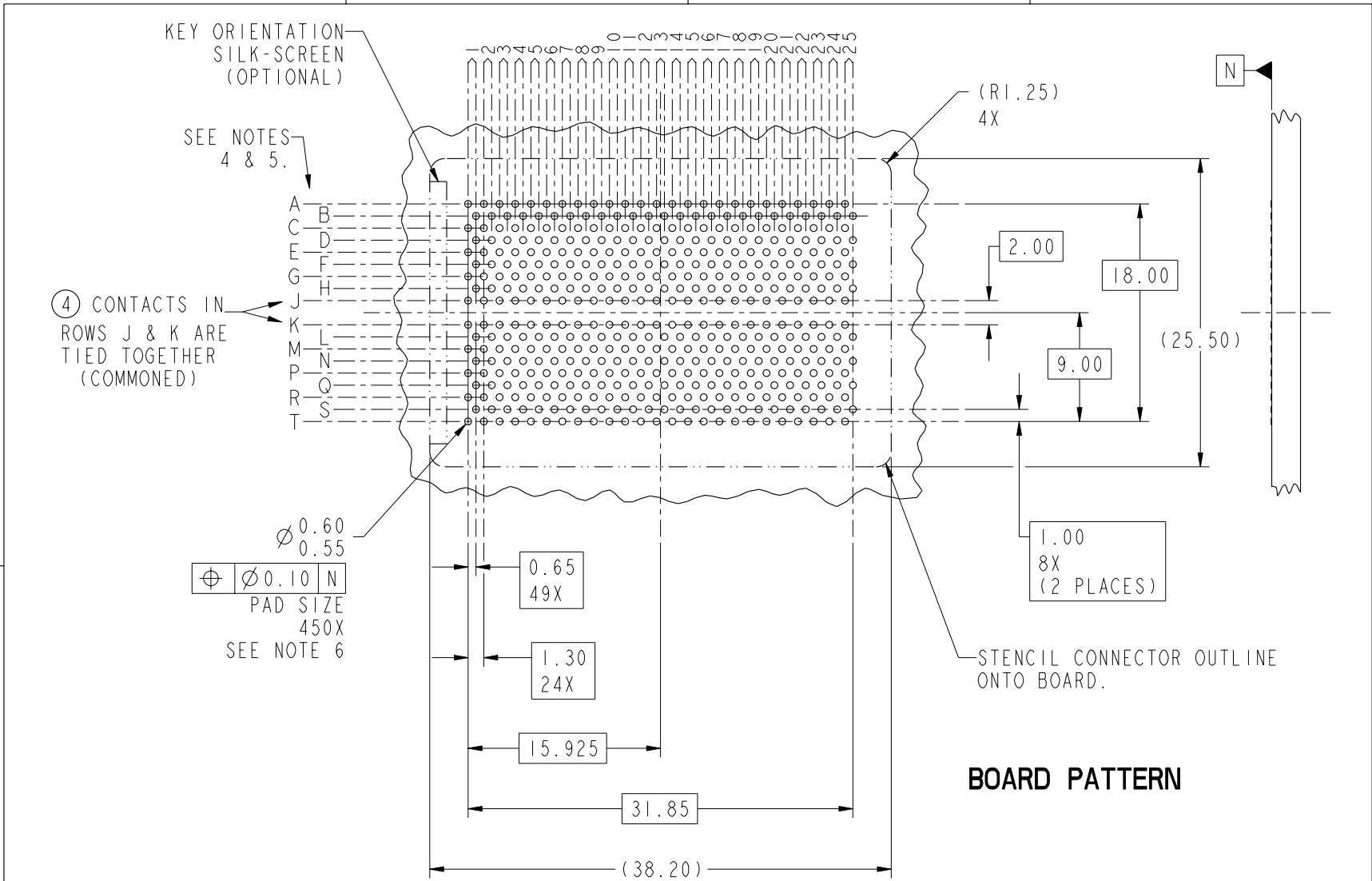


This document is the property of and embodies CONFIDENTIAL and PROPRIETARY information of FCI. No part of the information shown on this document may be used in any way or disclosed to others without the written consent of FCI. Copyright FCI.



mat'l code				SEE NOTE 1				tolerances unless otherwise specified				CUSTOMER				FCI www.fciconnect.com				
ltr	ecr no.	dr	date	linear	0.X ± 0.3				COPY				title							
A	V07-0606	LP	2007/09/19		0.XX ± 0.10				projection				GIG-Array							
					0.XXX ± 0.050				MM				11mm RECP. ASSY. 200 SIG. POS.							
				angles	0° ± 2°				scale				product family							
				dr	L.POTTEIGER 2007/08/15				2:1				GIG-Array							
				engr	D.HARPER 2007/08/15								code							
				chr	D.HARPER 2007/09/19								size							
				appd	D.HARPER 2007/09/19								dwg no							
sheet				revision	A	A	A	A					A				213			
index				sheet	1	2	3	4					10081496				sheet			
																1 of 4				

This document is the property of and embodies CONFIDENTIAL and PROPRIETARY information of FCI. No part of the information shown on this document may be used in any way or disclosed to others without the written consent of FCI. Copyright FCI.



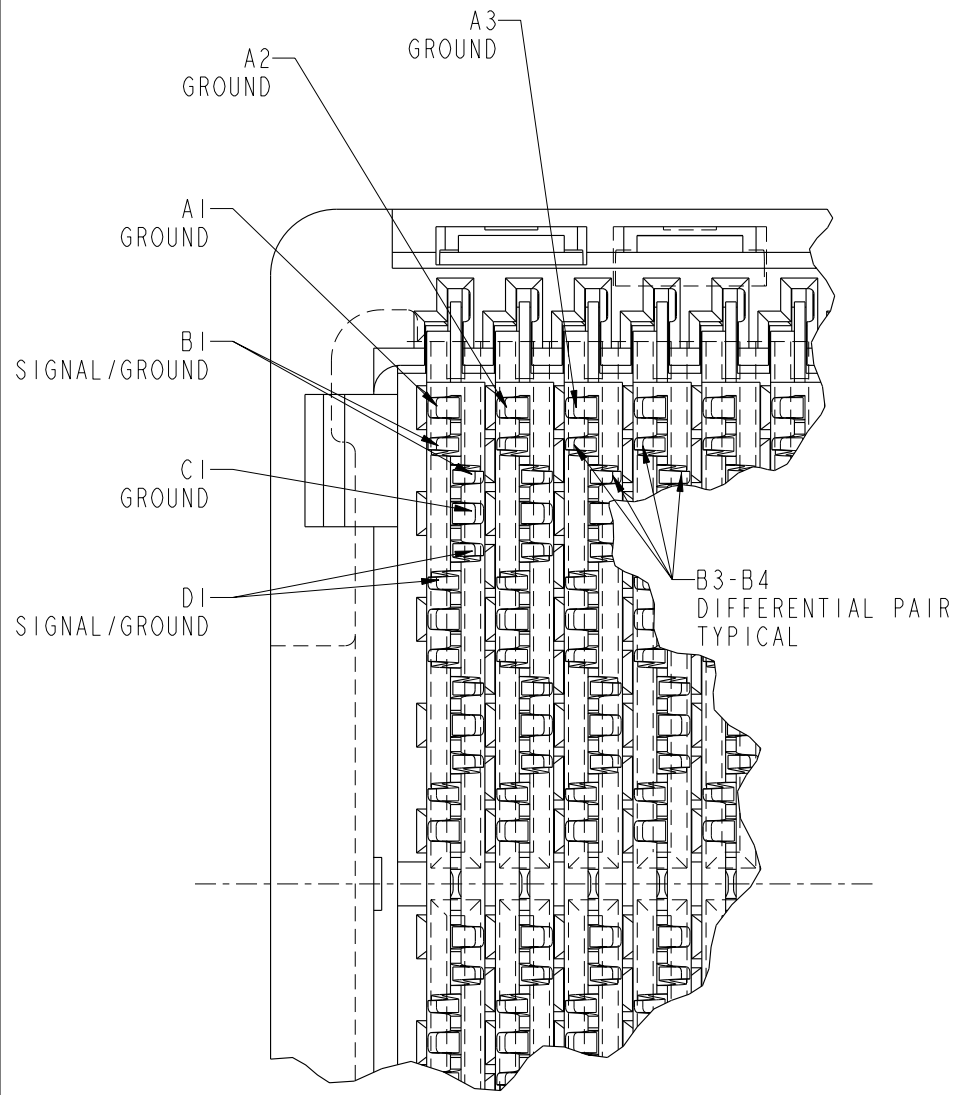
$\varnothing 0.60$
 $\varnothing 0.55$

\varnothing	$\varnothing 0.10$	N
---------------	--------------------	---

 PAD SIZE
 450X
 SEE NOTE 6

BOARD PATTERN

mat'l code				SEE NOTE 1		tolerances unless otherwise specified		CUSTOMER		www.fciconnect.com	
ltr	ecm no.	dr	date	linear	0.X ± 0.3	projection	COPY		title		
A					0.XX ± 0.10				GIG-Array		
				angles	0.XXX ± 0.050	$0^{\circ} \pm 2^{\circ}$			11mm RECP. ASSY. 200 SIG. POS.		
				dr	L.POTTEIGER	2007/08/15	MM		product family		code
				enrg	D.HARPER	2007/08/15	← MM →		GIG-Array		213
				chr	D.HARPER	2007/09/19	scale		size		sheet
				appd	D.HARPER	2007/09/19	2:1		A		2
sheet index		revision sheet									



NOTES:

- ①. MATERIAL:
HOUSING: LCP
CONTACT: COPPER ALLOY
PLATING (CONTACT): Au OVER Ni.
UL RATING: 94 V-0
SOLDER BALL: (SEE TABLE) EUTECTIC
SnPb OR LEAD FREE 95.5 Sn/4Ag/0.5Cu.
- ②. SOLDER BALLS WILL NOT BE PERFECT SPHERICAL SHAPE DUE TO REFLOW ATTACHMENT.
- ③. MATED HEIGHT EFFECTED BY CUSTOMERS' PCB PAD SIZE, PLATING, SOLDER REFLOW PROFILE & SOLDER PASTE.
- ④. CONTACTS IN ROWS A,C,E,G,J,K,M,P,R AND T ARE SINGLE BEAM CONTACTS, USED AS GROUND PINS.
(NOTE: CONTACTS IN ROWS J & K ARE TIED TOGETHER [COMMONED])
- ⑤. CONTACTS IN ROWS B,D,F,H,L,N,Q AND S ARE DUAL BEAM CONTACTS, TYPICALLY USED AS SIGNAL PINS.



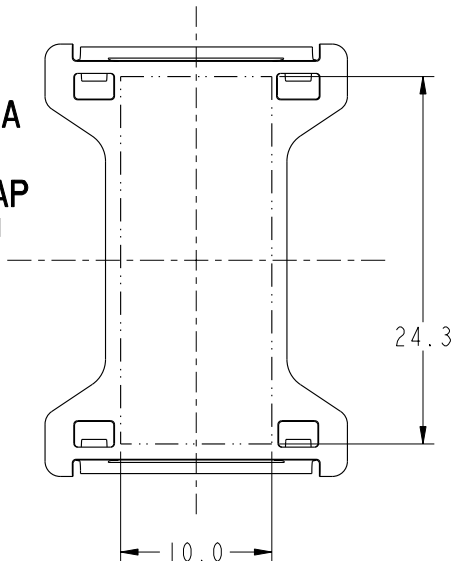
This document is the property of and embodies CONFIDENTIAL and PROPRIETARY information of FCI. No part of the information shown on this document may be used in any way or disclosed to others without the written consent of FCI. Copyright FCI.

RECEPTACLE INTERFACE DESCRIPTION

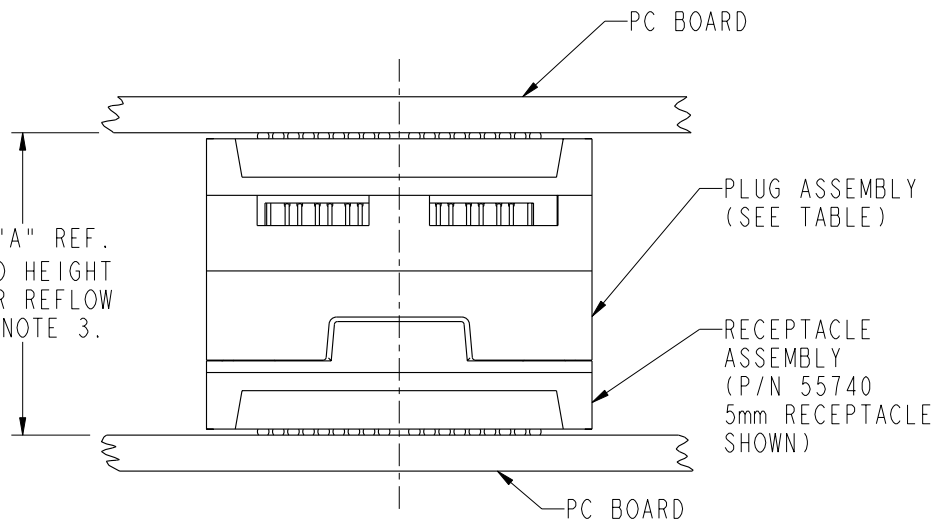
mat'l code				SEE NOTE 1		tolerances unless otherwise specified		CUSTOMER		FCI www.fciconnect.com	
ltr	ecn no.	dr	date	linear	0.X ±0.3	projection		COPY		title	
A					0.XX ±0.10	MM		GIG-Array		11mm RECP. ASSY. 200 SIG. POS.	
				angles	0.XXX ±0.050	MM		product family		GIG-Array	
				dr	0° ±2°	7:1		size		213	
				enr	L.POTTEIGER 2007/08/15			dwg no		10081496	
				chr	D.HARPER 2007/08/15			sheet		3	
				appd	D.HARPER 2007/09/19			cage code		22526	
					D.HARPER 2007/09/19					4	
sheet index	revision sheet										

PRODUCT NUMBER	SOLDER BALL
10081496-001	SnPb
10081496-001LF	SnAgCu LEAD FREE ⑦⑧

FLAT AREA
FOR
PICK-UP CAP
SCALE 2:1



DIM "A" REF.
MATED HEIGHT
AFTER REFLOW
SEE NOTE 3.



END VIEW OF MATED CONNECTORS
SCALE 2:1

DIM. "A"	PLUG ASSEMBLY P/N
21	55737
23	10026802
24	10055142
26	55738
31	55739
36	10054783

NOTES:

⑥ SPECIFIED POSITIONAL TOLERANCE DEFINES PAD TO PAD LOCATION WITHIN LAND PATTERN. POSITIONAL TOLERANCE OF LAND PATTERN TO FUDICIAL MARKS OR PCB DATUMS SHALL BE DEFINED BY CUSTOMER. FOR RECOMMENDED PRODUCT APPLICATION AND PCB DESIGN DETAILS, SEE DOC. NO. GS-20-016.

⑦ FOR PROPER APPLICATION FOLLOW FCI APPLICATION SPECIFICATION GS-20-033. LEAD FREE SOLDER BALLS WILL NOT SOLDER PROPERLY IN A LEADED SOLDER PROCESS DUE TO A HIGHER REFLOW TEMPERATURE. LEADFREE PRODUCT IS THEREFORE NOT BACKWARDS COMPATIBLE WITH LEADED OR SOME SOLDERING APPLICATIONS. REFERENCE FCI APPLICATION SPECIFICATION.

⑧ THIS PRODUCT MEETS THE EUROPEAN UNION DIRECTIVES AND OTHER COUNTRY REGULATIONS AS DESCRIBED IN GS-22-008. PRODUCT MEETING THIS DIRECTIVE IS IDENTIFIED IN THE CODE NUMBER MARKED ON EACH PART BY HAVING AN "X" IN THE SEVENTH CHARACTER POSITION.

PRELIMINARY

mat'l code				SEE NOTE 1		tolerances unless otherwise specified		CUSTOMER		FCI www.fciconnect.com	
ltr	ecr no.	dr	date	linear	0.X ±0.3	projection		COPY		title	
A					0.XX ±0.10	⊕		GIG-Array		11mm RECP. ASSY. 200 SIG. POS.	
				angles	0.XXX ±0.050	0° ±2°		product family		GIG-Array code	
				dr	L.POTTEIGER 2007/08/15	MM		size		213	
				enr	D.HARPER 2007/08/15	← MM →		dwg no		sheet	
				chr	D.HARPER 2007/09/19	scale		A		4	
				appd	D.HARPER 2007/09/19	2:1		10081496			
sheet index	revision sheet										

This document is the property of and embodies CONFIDENTIAL and PROPRIETARY information of FCI. No part of the information shown on this document may be used in any way or disclosed to others without the written consent of FCI. Copyright FCI.