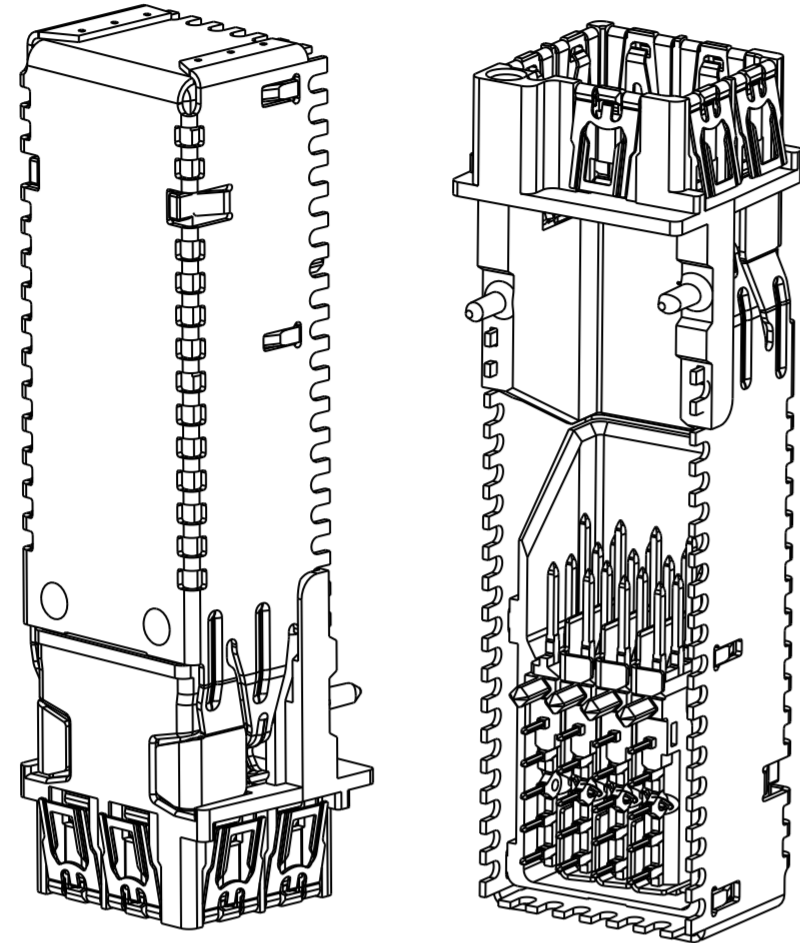
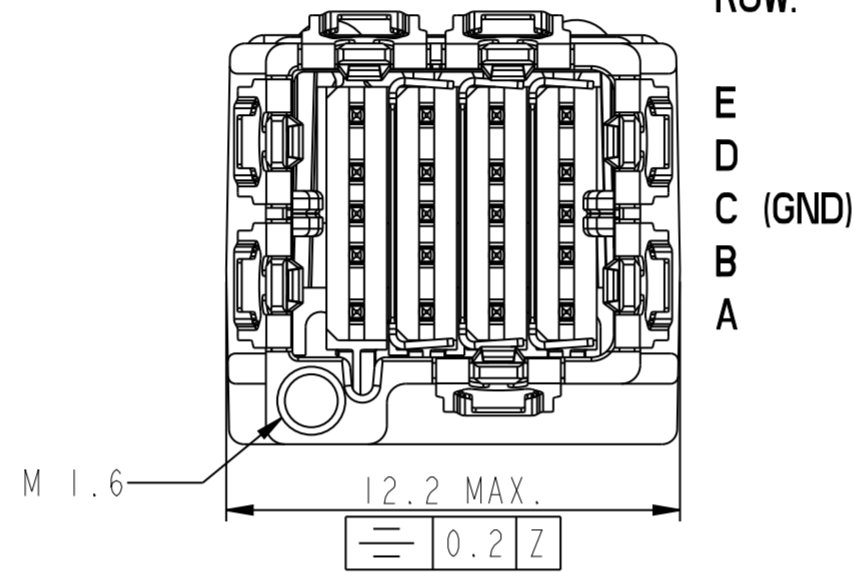


PART NUMBERING	LOADING PATTERN				PACKAGING (SEE NOTE 6)
	COLUMN 1 (NOTE 4)	COLUMN 2	COLUMN 3	COLUMN 4	
10044471-120200LF	UNSHIELDED IMLA	EMPTY	UNSHIELDED IMLA	EMPTY	TAPE ON REEL
10044471-122220LF	UNSHIELDED IMLA	UNSHIELDED IMLA	UNSHIELDED IMLA	UNSHIELDED IMLA	TAPE ON REEL
10044471-121110LF	UNSHIELDED IMLA	SHIELDED IMLA	SHIELDED IMLA	SHIELDED IMLA	TAPE ON REEL

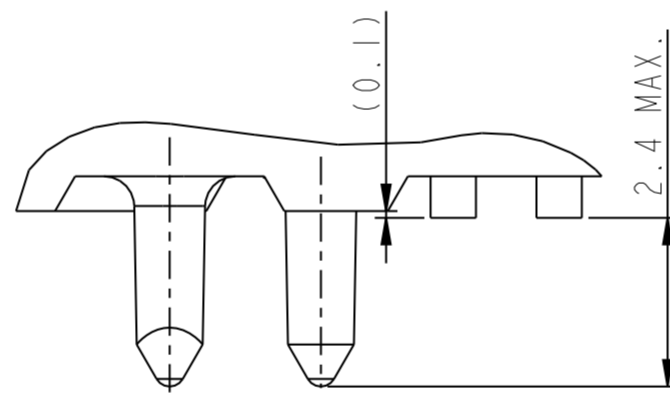


COLUMN: 1 2 3 4



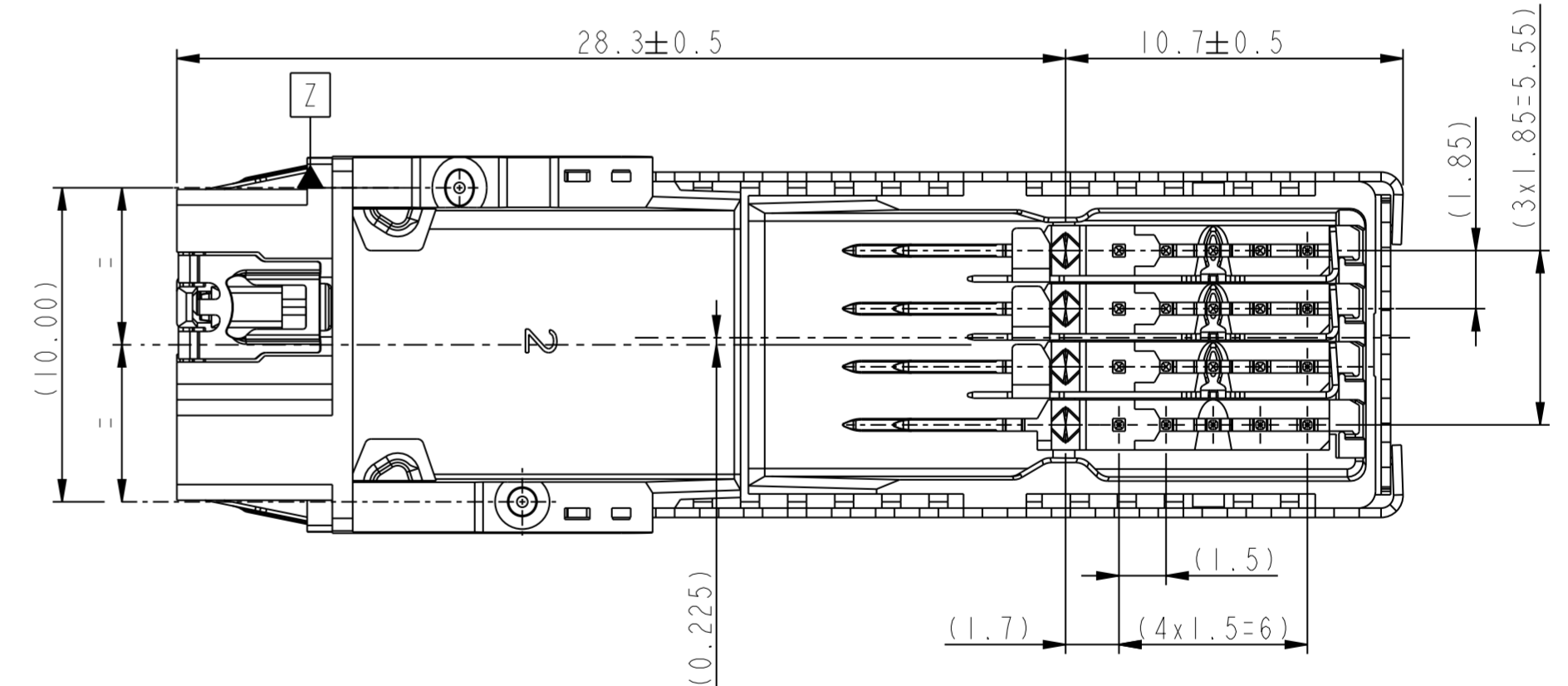
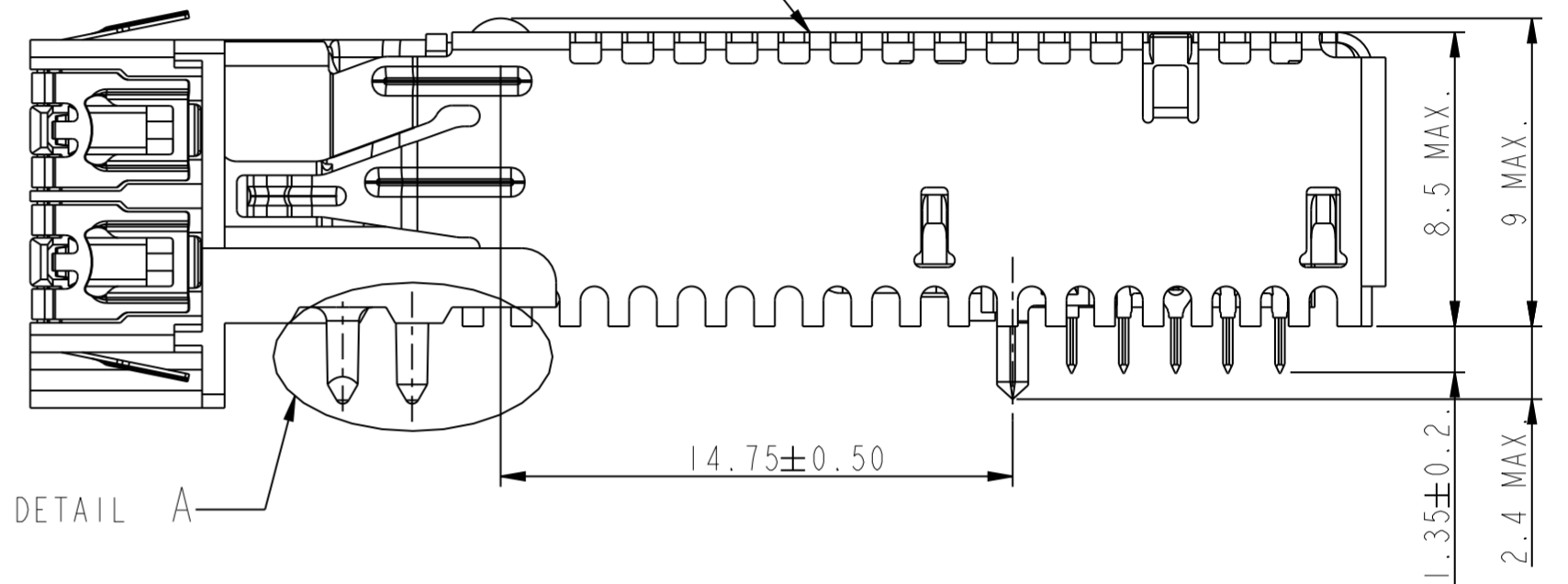
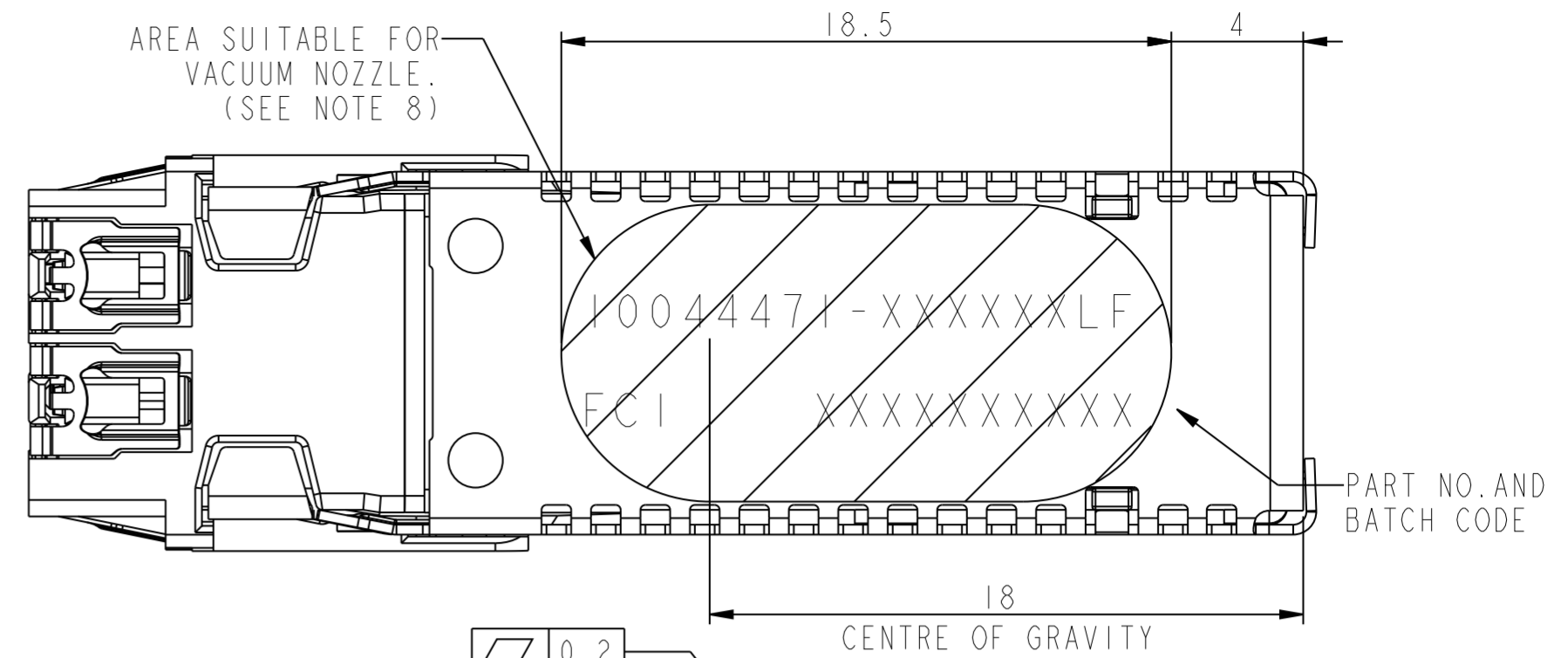
ROW:

E  
D  
C (GND)  
B  
A



DETAIL A  
SCALE 10:1

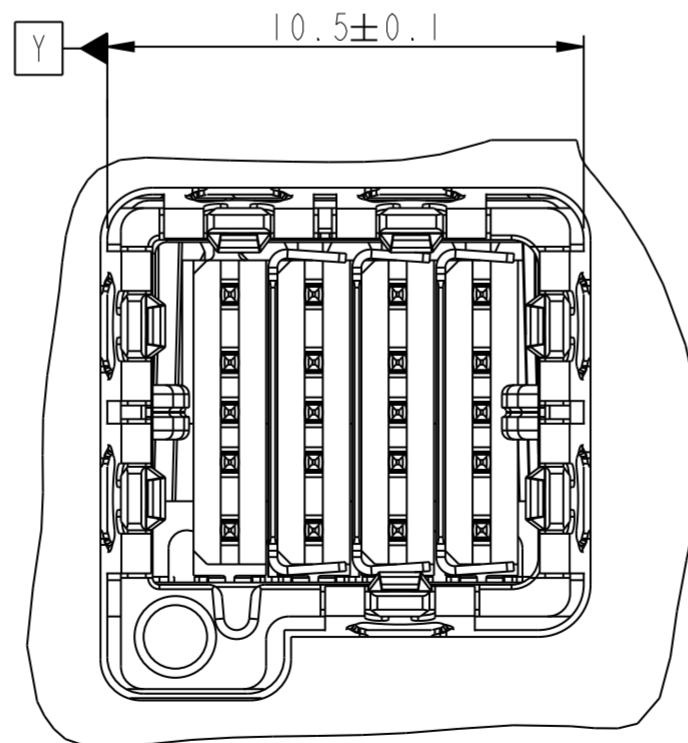
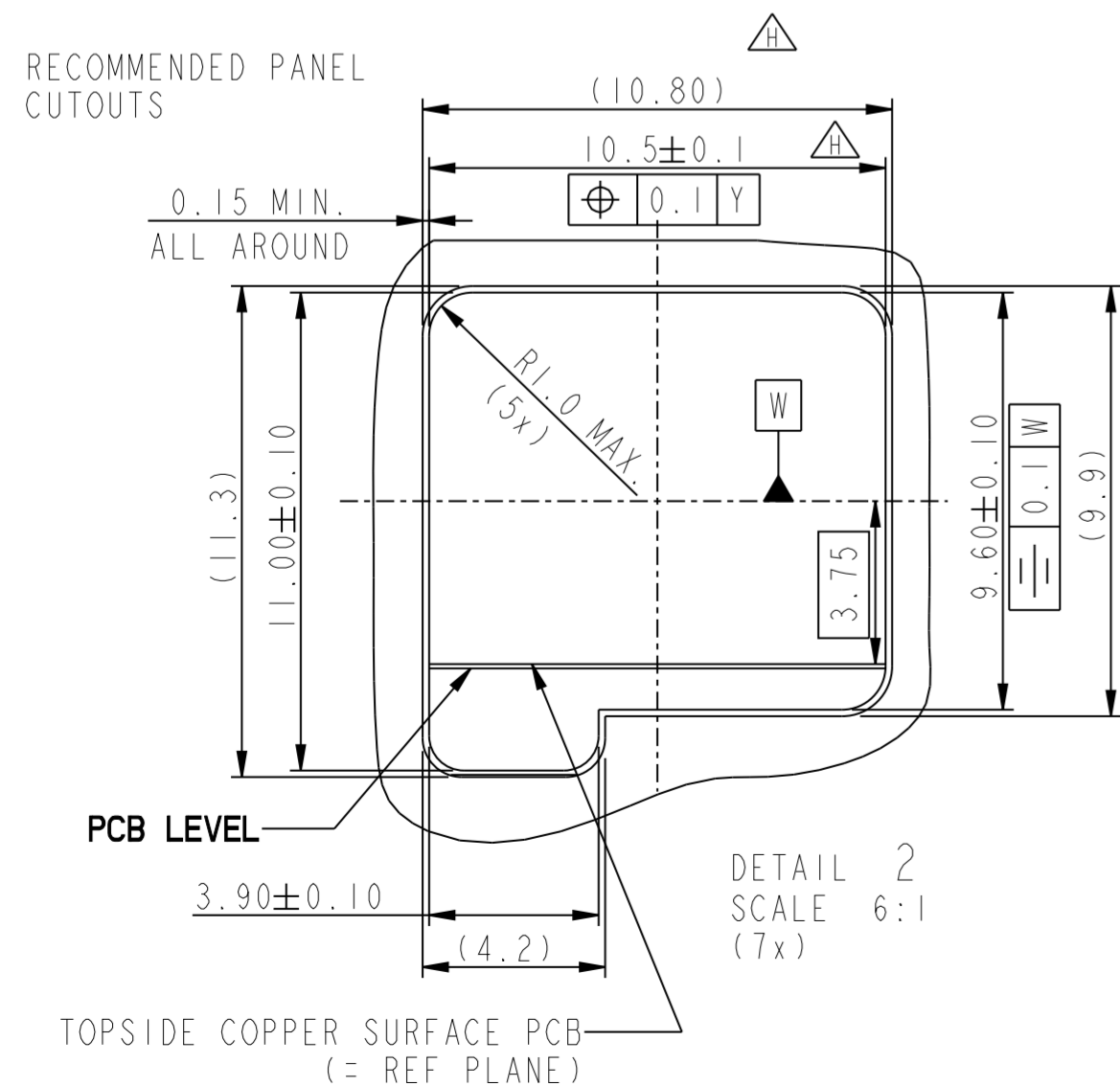
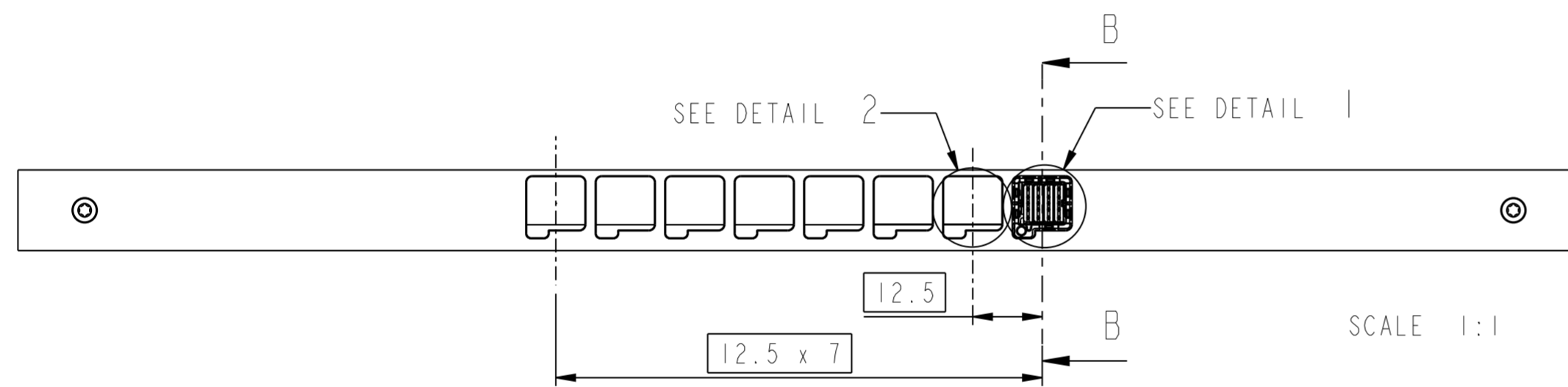
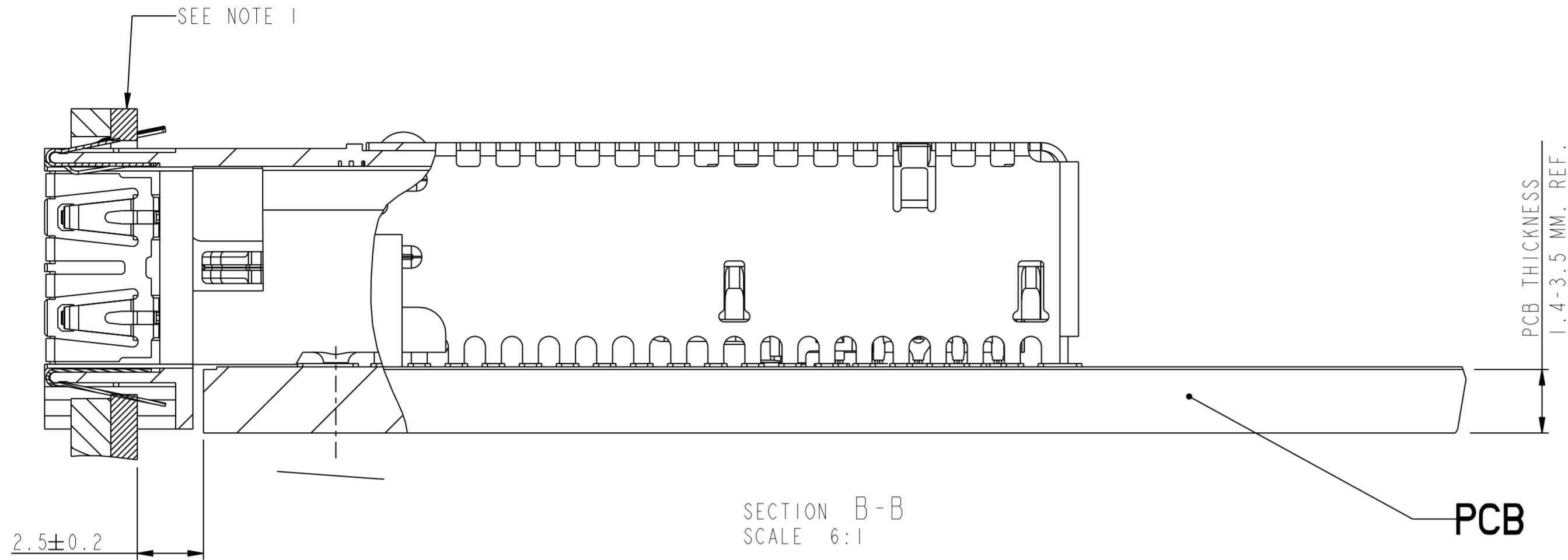
- NOTES:
- MATES WITH CABLE CONNECTOR 10044473-SERIES
  - MATERIALS:  
DIECAST-ENTRY: ZINC ALLOY, PLATING/FINISH: Sn PLATED WITH Ni OVER Cu UNDERLAYER,  
TOPCOVER - COPPER ALLOY, PLATING/FINISH: Sn PLATED WITH Ni UNDERLAYER,  
SPRINGS - STAINLESS STEEL,  
RETAINER - HIGH TEMPERATURE FLAME RETARDANT THERMOPLAST, COLOUR NATURAL,  
VERTICAL SHIELDS - COPPER ALLOY, PLATING/FINISH: Sn WITH Ni UNDERLAYER,  
HEADER IMLA'S - COPPER ALLOY OVERMOLDED WITH HIGH TEMPERATURE FLAME  
RETARDANT THERMOPLAST, COLOUR BLACK,  
LEADFRAME PLATING/FINISH: NICKEL UNDERPLATING, Au IN CONTACT ZONE, Sn IN SOLDER TAIL AREA.
  - CONNECTOR CAN BE PICKED UP WITH A MECHANICAL GRIPPER OR A VACUUM NOZZLE,  
NOZZLE DIAMETER UP TO 9 MM. ESTIMATED MAXIMUM MASS OF THE PRODUCT 6.00 G.
  - COLUMN 1 IS ALWAYS FILLED WITH AN UNSHIELDED IMLA.
  - FCI PRODUCT SPECIFICATION GS-12-314.
  - PACKAGING: TAPE AND REEL ACCORDING TO EIA-481-B, SEE LAST SHEET.
  - THIS PRODUCT MEETS EUROPEAN UNION DIRECTIVES AND OTHER COUNTRY REGULATIONS  
AS DESCRIBED IN GS-22-008.
  - THE CONNECTOR WILL WITHSTAND EXPOSURE TO 260°C PEAK TEMPERATURE  
IN A CONVECTION, INFRA-RED OR VAPOR PHASE REFLOW OVEN. FOR MORE DETAILS AND  
MOUNTING RECOMMENDATIONS, SEE FCI APPLICATION GUIDE GS-20-048.



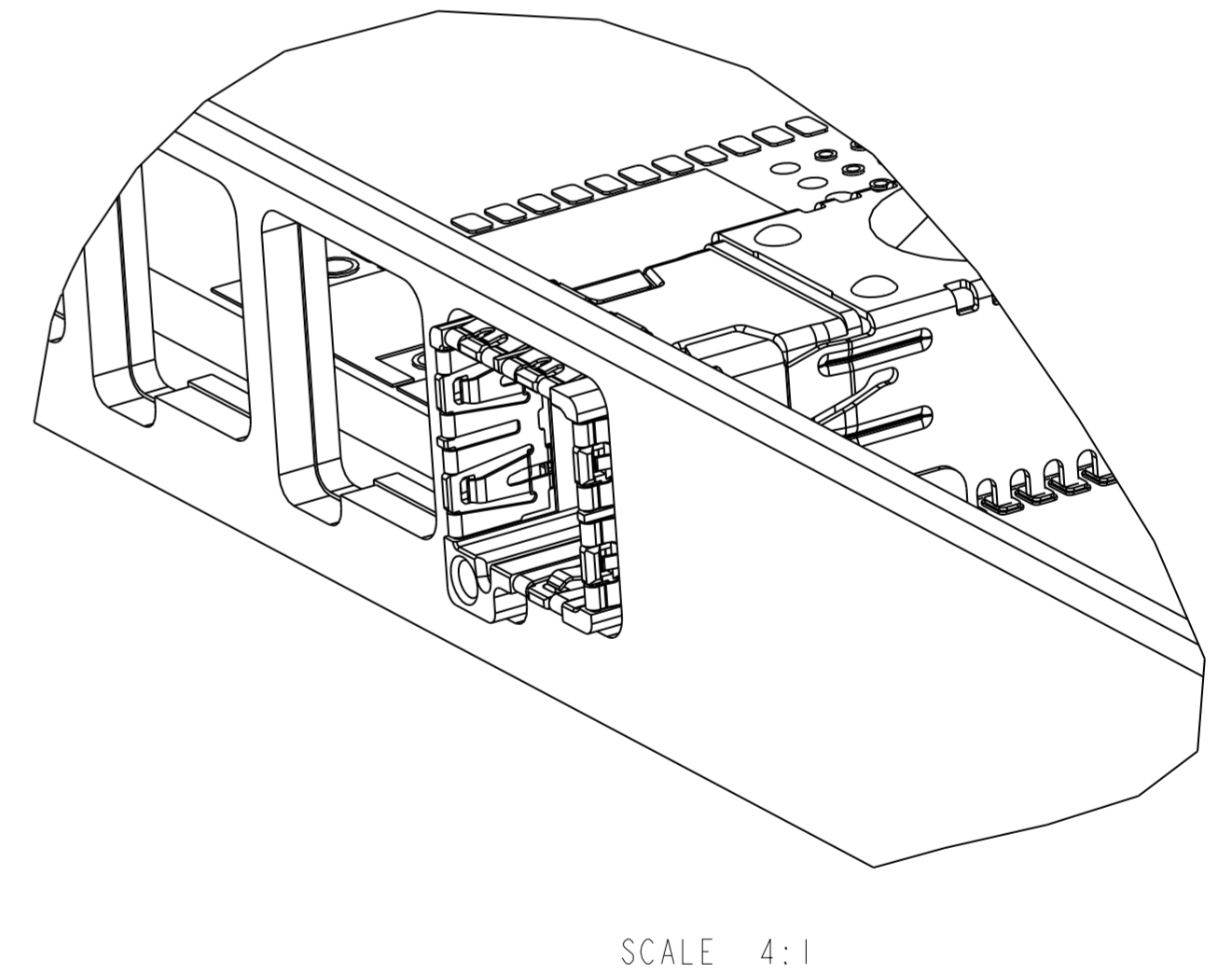
www.fciconnect.com		surface - ✓	tolerance std	projection	mm
		ISO 1302	ISO 406 ISO 1101		
TOLERANCES UNLESS OTHERWISE SPECIFIED					
Dr	P. Poorter	040924	ANGULAR	0.x ±0.3	size A2
Eng	GDr/RWe	040805	LINEAR	0.xx ±0.2	Scale 2:1
Chr	R. Weber	040929	0° ±z°	0.xxx ±0.1	ECN DG09-0134
Appr	G. Droesbeke	040929	Product family	-	Spec ref *
FCI		TITLE		dg no	Rev.
		HEADER 8 PAIR		10044471	H
		DENSII-SHIELD I/O		customer copy	sheet 1 of 4
		catalog no			

lfr	ecn no	dr	date
H	DG11-0099	TER	2011-03-30
-	-	-	-
C	H05-0089	PEP	2005-08-31
D	H06-0003	PEP	2006-01-11
E	H06-0139	PEP	2006-11-13
F	DG09-0016	TER	2009-02-03
G	DG09-0134	TER	2009-04-27





NOTE 1:  
A DESIGN IS SHOWN WITH AN INNER CONDUCTIVE FRONTPANEL (FOR GROUNDING), AND A COSMETIC OUTER PANEL. THE INNER PANEL IS RECOMMENDED TO BE Sn PLATED ON THE CUTOUT EDGES.



www.fciconnect.com		surface	tolerance std	projection	mm
		ISO 1302	ISO 406 ISO 1101		
TOLERANCES UNLESS OTHERWISE SPECIFIED					
Dr	P.Poorter	040924	ANGULAR	0.x	±0.3
Eng	GDr/RWe	040805	LINEAR	0.xx	±0.2
Chr	R.Weber	040929	0° ±2°	0.xxx	±0.1
Appr	G.Droesbeke	040929	Product family	-	Spec ref
FCI			TITLE		Rev.
			HEADER 8 PAIR		10044471
			DENS1-SHIELD I/O		H
			catalog no		customer copy sheet 3 of 4

1

2

3

4

A

B

C

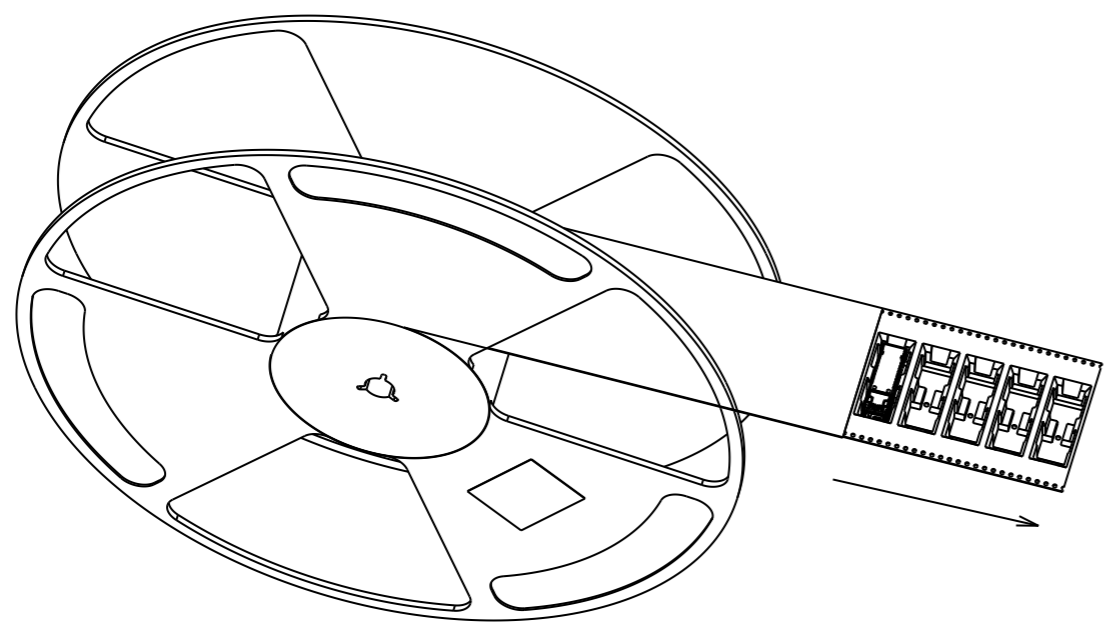
D

A

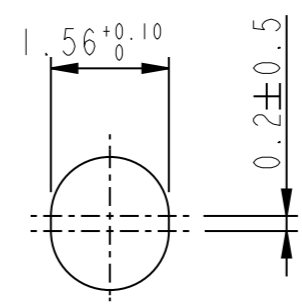
B

C

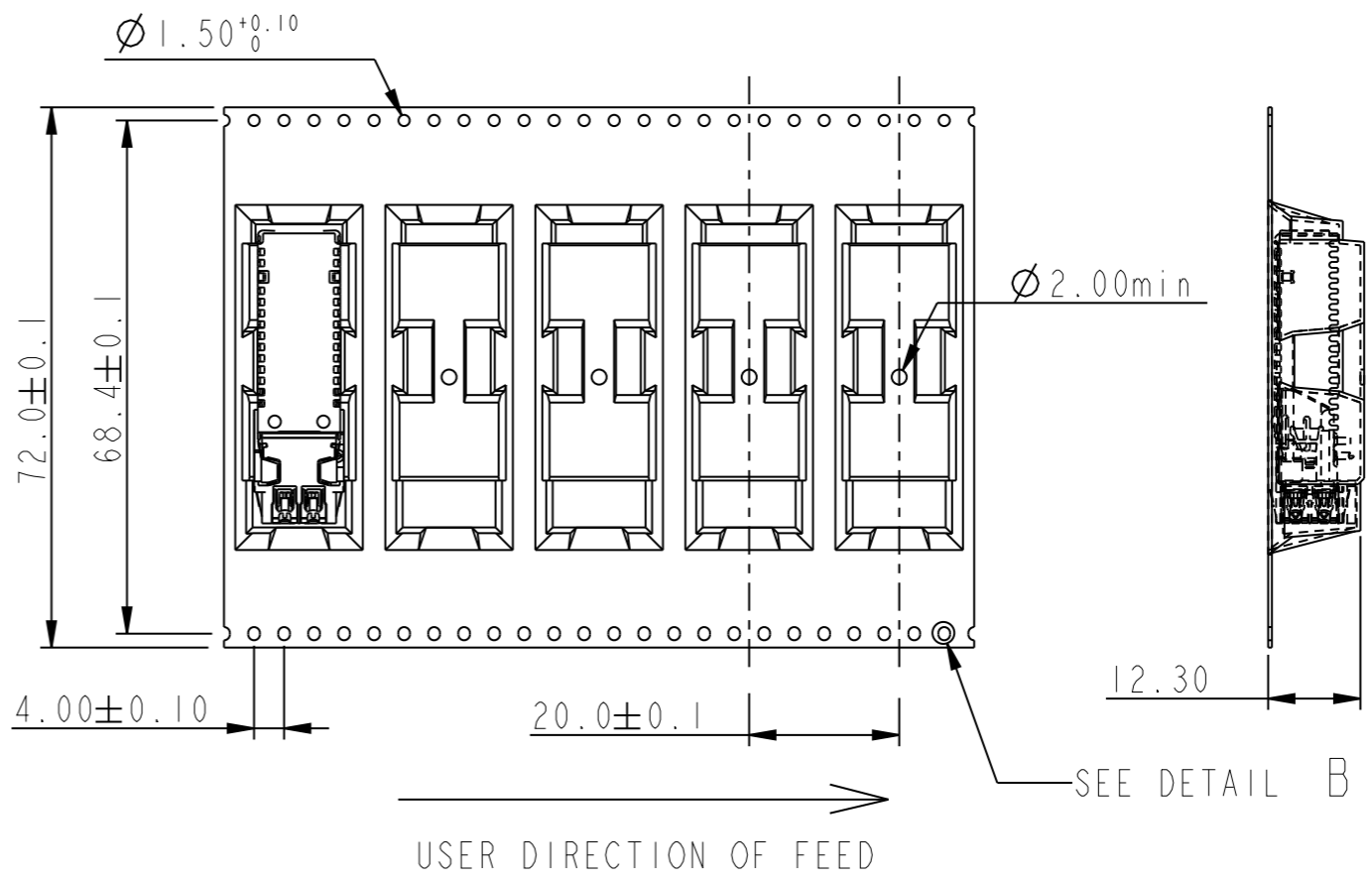
D



SCALE 3:10



DETAIL B  
SCALE 10:1



Copyright FCI.

NOTE:  
 1: MATERIAL CARRIER TAPE: Polystyrene;  
 2: MATERIAL COVER TAPE : Polyester;  
 3: THE PACKAGING IS ANTISTATIC TREATED.

www.fciconnect.com		surface	ISO 1302	tolerance std	ISO 406	ISO 1101	projection	mm
		✓		TOLERANCES UNLESS OTHERWISE SPECIFIED		⊕		↔
Dr	P.Poorter	040924	ANGULAR	LINEAR	0.X	±0.3	size	Scale
Eng	GDr/RWe	040805			0.XX	±0.2	A3	1:1
Chr	R.Weber	040929	0°	±2°	0.XXX	±0.1	ECN	DG09-0134
Appr	G.Droesbeke	040929	Product family		-		Spec ref	*
FCI		HEADER 8 PAIR			dwg no		10044471	
		DENSI-SHIELD I/O					Rev. H	
		catalog no			-		customer copy sheet 4 of 4	

REV E - 2006-03-28

1

2

3