

### TECHNICAL DATA

#### MATERIAL

- Phosphor bronze

#### 0.635 MM (.025") female contact plating

- The standard connector is tin plated (Thickness : Ni 2 $\mu$  + Sn 5 $\mu$ )
- Contact area's selective gold plating (Thickness : Ni 2 $\mu$  + Au 0.15 $\mu$ )

#### MECHANICAL SPECIFICATIONS

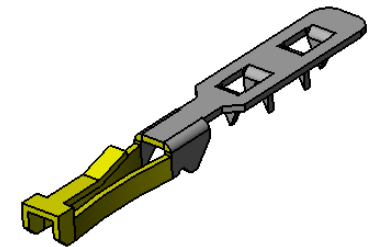
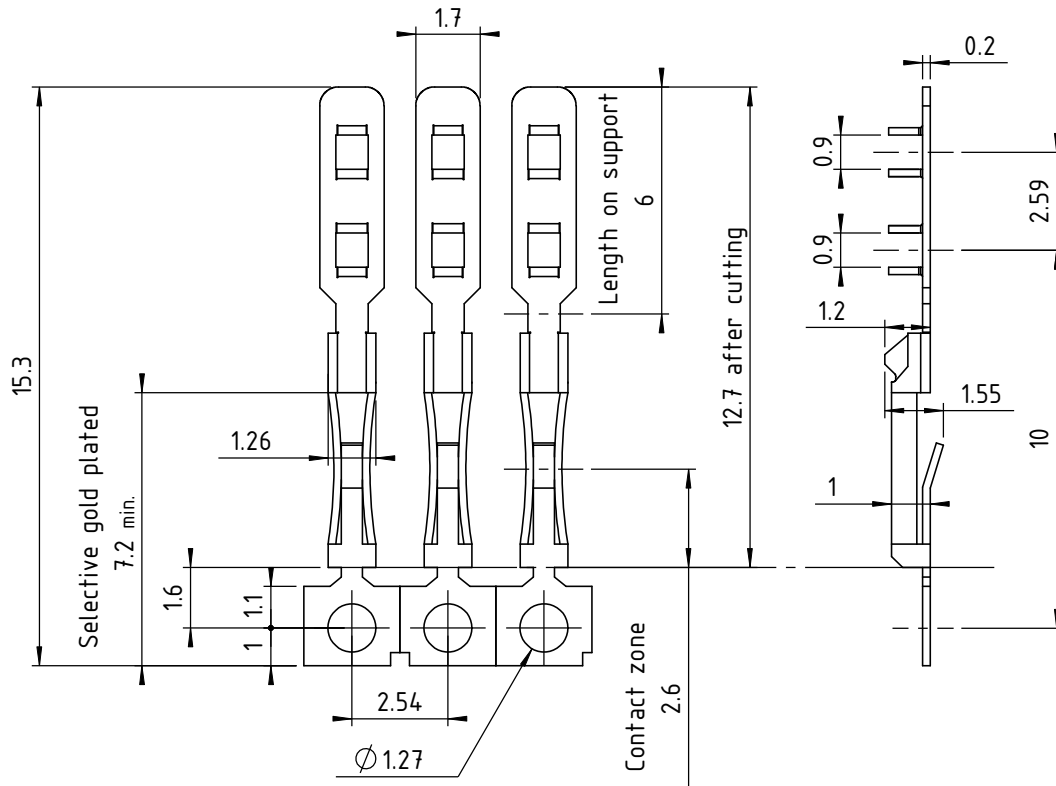
- Contact resistance to stripping from circuit
- ➔ 15 N mini (3.3 lbs) perpendicular to the tracks (breaking-up of the conductor)
- ➔ 50 N mini (11.2 lbs) parallel to the tracks (breaking-up of the conductor)

#### ELECTRICAL SPECIFICATIONS

- Contact resistance 5 m $\Omega$  maxi
- Contact resistance after climatic tests 6 m $\Omega$  maxi
- Insulation resistance 5.10<sup>5</sup> M $\Omega$  à 500 V
- Withstanding voltage 1100 V eff.
- Capacitance between two contacts 4pF maxi
- Direct current rating per contact 3 A permanent
- Alternating current rating per contact 5 A permanent

#### THERMIC SPECIFICATIONS

- Connector operating temperature -55 $^{\circ}$ C à +150 $^{\circ}$ C -67 $^{\circ}$ F to +302 $^{\circ}$ F

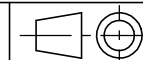


\* : X code corresponding to the conditioning  
 1 = Incomplete reel  
 2 = Complete reel

 www.nicomatic.com Mail : nicomatic@nicomatic.fr Tel : +33 (0)4.50.36.13.85	2	08/12/08	H.L.	E.M.	D.Z.
	Iss	Date	Drawn	Checked	Approved
Folder : X:\Méthodes\Plans clients\Plans clients 2D\01 - Crimpflex\02 - Contact\10025-3X_cl Item : Selective gold plated high insertion force female pin					

This document and drawings, sketches, and schematic drawings are the property of the NICOMATIC company, and no parts thereof may be reproduced and used without the written consent of the owner. Law dated 11.03.1902

Catalogue Reference : 10025-3X



General tolerance  $\pm 0.2$

Scale 5:1

Page 1/1