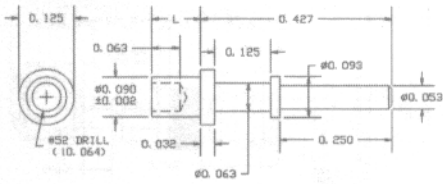


TERMINALS

10-806-X-01

MATERIAL: BRASS
FINISH: SILVER

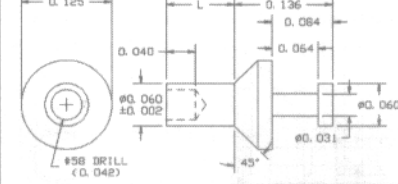


PART NO.	L	T	RECOMMENDED MOUNTING HOLE .094 DIA.(#42 DRILL)
10-806-1	.078	1/32	
10-806-2	.109	1/16	
10-806-3	.141	3/32	
10-806-4	.172	1/8	
10-806-6	.234	3/16	
10-806-8	.297	1/4	

TOOLS	
ANVIL	PUNCH
TA125-94-23	TP90-64

10-904-X-05

MATERIAL: BRASS
FINISH: ELECTRO-SOLDER

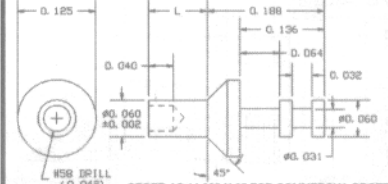


PART NO.	L	T	RECOMMENDED MOUNTING HOLE .064 DIA.(#52 DRILL)
10-904-1	.062	1/32	
10-904-2	.094	1/16	
10-904-3	.125	3/32	
10-904-4	.156	1/8	

TOOLS	
ANVIL	PUNCH
TA125-63-20	TP62-44

10-905-X-05

MATERIAL: BRASS
FINISH: ELECTRO-SOLDER



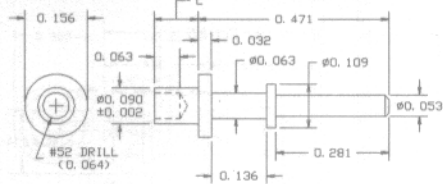
PART NO.	L	T	RECOMMENDED MOUNTING HOLE .064 DIA.(#52 DRILL)
10-905-1	.062	1/32	
10-905-2	.094	1/16	
10-905-3	.125	3/32	
10-905-4	.156	1/8	

TOOLS	
ANVIL	PUNCH
TA125-63-20	TP62-44

ORDER AS 14-905-X-05 FOR COMMERCIAL BRONZE MATERIAL

10-808-X-01

MATERIAL: BRASS
FINISH: SILVER

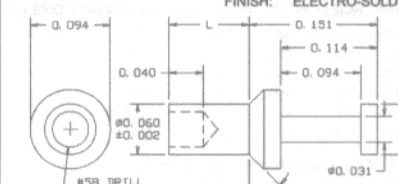


PART NO.	L	T	RECOMMENDED MOUNTING HOLE .094 DIA.(#42 DRILL)
10-808-1	.078	1/32	
10-808-2	.109	1/16	
10-808-3	.141	3/32	
10-808-4	.172	1/8	
10-808-6	.234	3/16	
10-808-8	.297	1/4	

TOOLS	
ANVIL	PUNCH
TA156-109-32	TP90-64

14-946-X-05

MATERIAL: LEADED COMMERCIAL BRONZE
FINISH: ELECTRO-SOLDER (05)

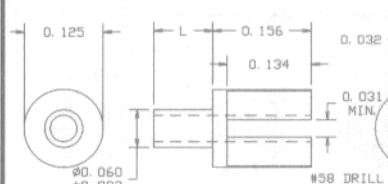


PART NO.	L	T	RECOMMENDED MOUNTING HOLE .064 DIA.(#52 DRILL)
14-946-1	.062	1/32	
14-946-2	.094	1/16	
14-946-3	.125	3/32	
14-946-4	.156	1/8	

TOOLS	
ANVIL	PUNCH
TA94-62-20	TP62-44

12-932-X-03

MATERIAL: BRASS
FINISH: GOLD

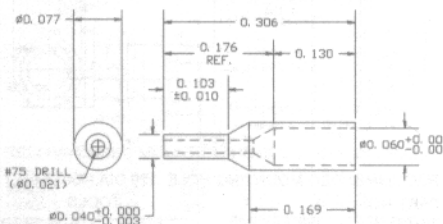


PART NO.	L	T	RECOMMENDED MOUNTING HOLE .064 DIA.(#52 DRILL)
12-932-1	.062	1/32	
12-932-2	.094	1/16	
12-932-3	.125	3/32	
12-932-4	.156	1/8	

TOOLS	
ANVIL	PUNCH
TA10-932	TP62-44

10-8012-1-01 WIRE ADAPTER

MATERIAL: BRASS
FINISH: SILVER

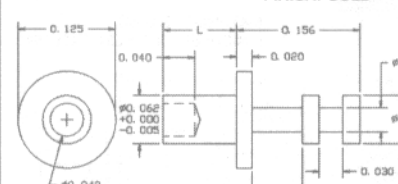


PART NO.	L	T	RECOMMENDED MOUNTING HOLE .064 DIA.(#52 DRILL)
10-8012-1-01	.062	1/32	

TOOLS	
ANVIL	PUNCH
TA125-94-23	TP90-64

12-931-X-03

MATERIAL: BRASS
FINISH: GOLD

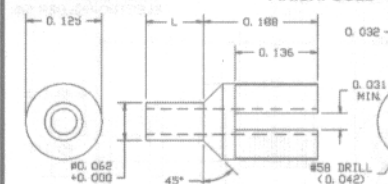


PART NO.	L	T	RECOMMENDED MOUNTING HOLE .064 DIA.(#52 DRILL)
12-931-1	.062	1/32	
12-931-2	.094	1/16	
12-931-3	.125	3/32	
12-931-4	.156	1/8	

TOOLS	
ANVIL	PUNCH
TA125-63-20	TP62-44

12-940-X-03

MATERIAL: BRASS
FINISH: GOLD

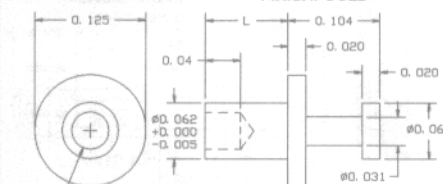


PART NO.	L	T	RECOMMENDED MOUNTING HOLE .064 DIA.(#52 DRILL)
12-940-1	.062	1/32	
12-940-2	.094	1/16	
12-940-3	.125	3/32	
12-940-4	.156	1/8	

TOOLS	
ANVIL	PUNCH
TA10-940	TP62-44

12-930-X-03

MATERIAL: BRASS
FINISH: GOLD

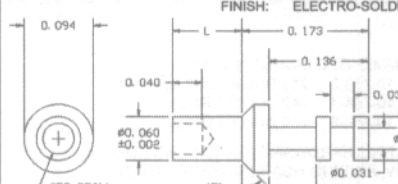


PART NO.	L	T	RECOMMENDED MOUNTING HOLE .064 DIA.(#52 DRILL)
12-930-1	.062	1/32	
12-930-2	.094	1/16	
12-930-3	.125	3/32	
12-930-4	.156	1/8	

TOOLS	
ANVIL	PUNCH
TA125-63-20	TP62-44

14-947-X-05

MATERIAL: LEADED COMMERCIAL BRONZE
FINISH: ELECTRO-SOLDER

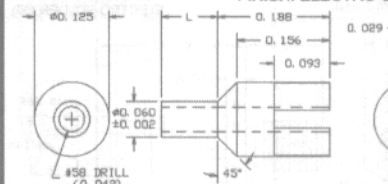


PART NO.	L	T	RECOMMENDED MOUNTING HOLE .064 DIA.(#52 DRILL)
14-947-1	.062	1/32	
14-947-2	.094	1/16	
14-947-3	.125	3/32	
14-947-4	.156	1/8	

TOOLS	
ANVIL	PUNCH
TA94-62-20	TP62-44

10-903-X-05

MATERIAL: BRASS
FINISH: ELECTRO-SOLDER

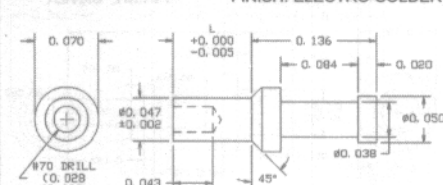


PART NO.	L	T	RECOMMENDED MOUNTING HOLE .064 DIA.(#52 DRILL)
10-903-1	.062	1/32	
10-903-2	.094	1/16	
10-903-3	.125	3/32	
10-903-4	.156	1/8	

TOOLS	
ANVIL	PUNCH
TA10-903	TP62-44

10-939-X-05

MATERIAL: BRASS
FINISH: ELECTRO-SOLDER

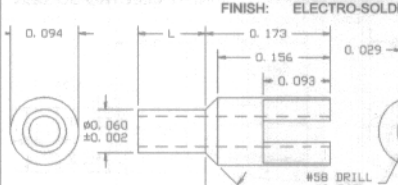


PART NO.	L	T	RECOMMENDED MOUNTING HOLE .064 DIA.(#52 DRILL)
10-939-1	.052	1/32	
10-939-2	.085	1/16	

TOOLS	
ANVIL	PUNCH
TA10-938	TP47-26

14-948-X-05

MATERIAL: LEADED COMMERCIAL BRONZE
FINISH: ELECTRO-SOLDER

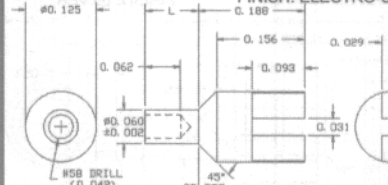


PART NO.	L	T	RECOMMENDED MOUNTING HOLE .064 DIA.(#52 DRILL)
14-948-1	.062	1/32	
14-948-2	.094	1/16	
14-948-3	.125	3/32	
14-948-4	.156	1/8	

TOOLS	
ANVIL	PUNCH
TA10-401	TP62-44

10-914-X-05

MATERIAL: BRASS
FINISH: ELECTRO-SOLDER



PART NO.	L	T	RECOMMENDED MOUNTING HOLE .064 DIA.(#52 DRILL)
10-914-1	.062	1/32	
10-914-2	.094	1/16	
10-914-3	.125	3/32	
10-914-4	.156	1/8	

TOOLS	
ANVIL	PUNCH
TA10-903	TP62-44

FOR ADDITIONAL SIZES AND MATERIALS, CONTACT FACTORY



e-mail : info@concord-elex.com
800-847-4162 (outside N.Y.S.)
212-777-6571 • fax. 212-995-0161