

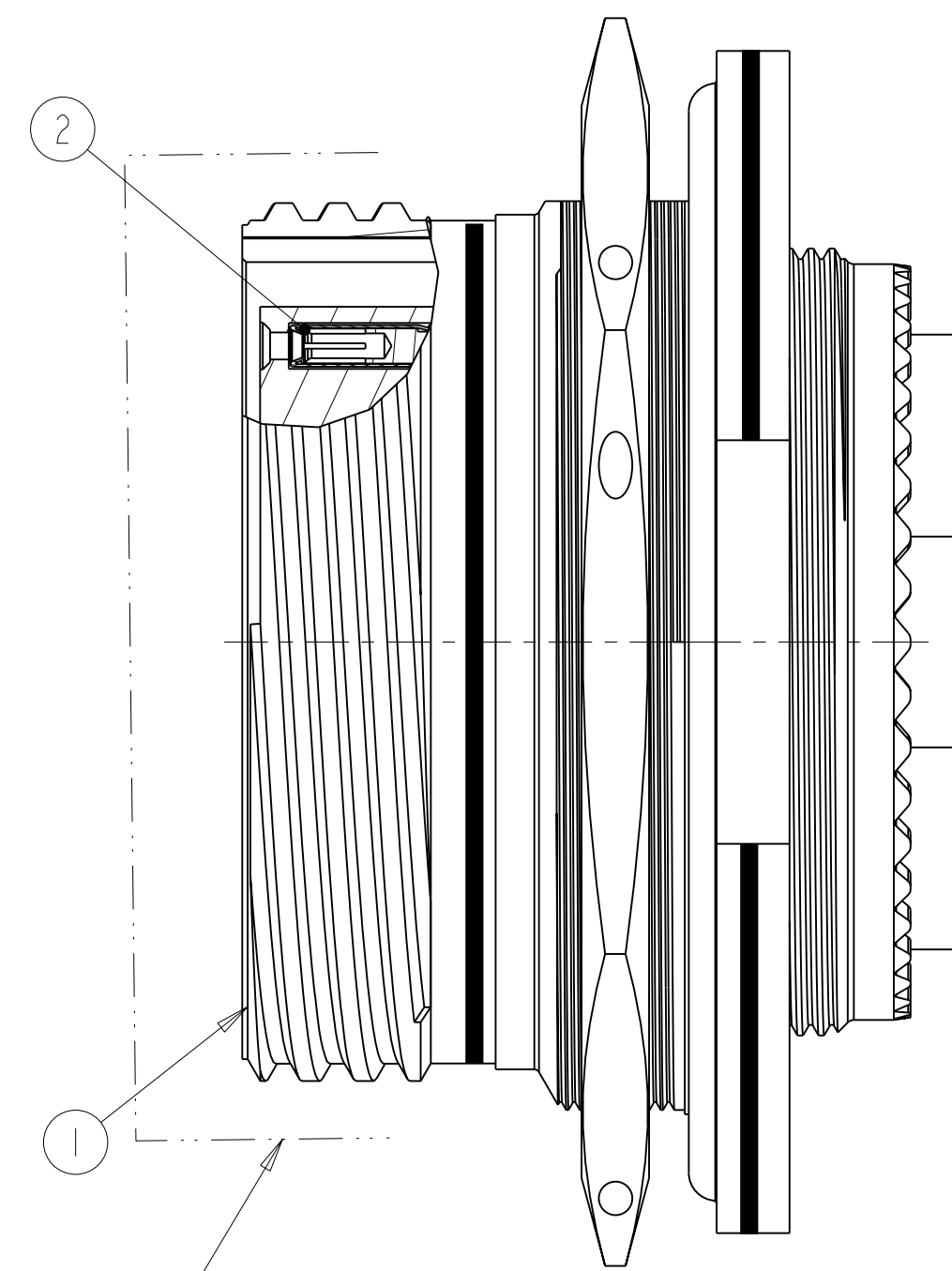
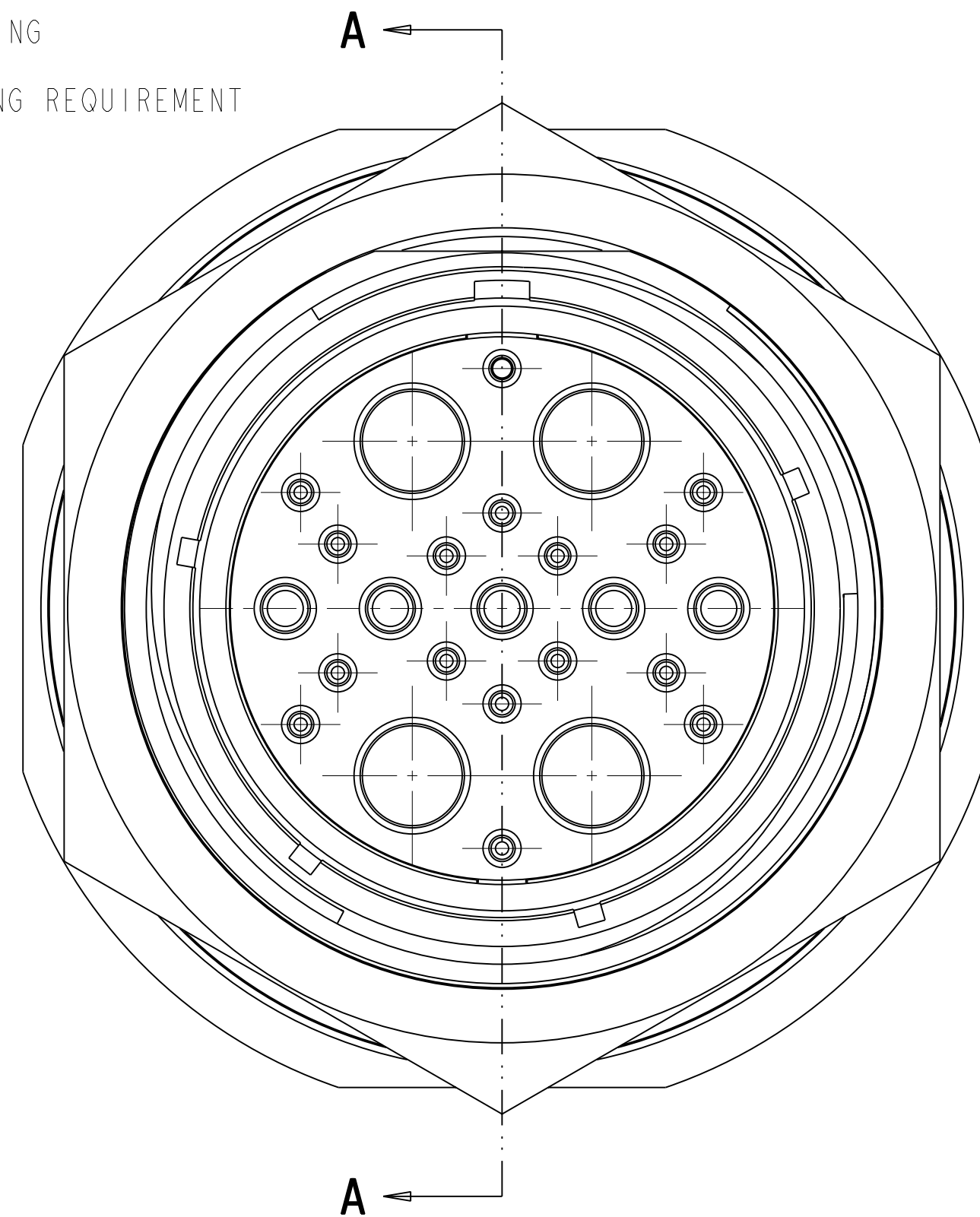
REV. A	SHEET 1 OF 1	10-660975-430
REVISIONS		
LTR	DESCRIPTION	DATE
A	INITIAL RELEASE	

KIT PART NUMBER	KIT TYPE	CONNECTOR PART NUMBER	CRIMP CONTACT PART NUMBER	QTY.	CONNECTOR TV REF
10-660975-430N	I	10-552629-26S	M39029/56-351	16	TVS07RK-25-26S
10-660975-430A		10-552629-26H			TVS07RK-25-26SA
10-660975-430B		10-552629-26J	M39029/56-353	5	TVS07RK-25-26SB
10-660975-430C		10-552629-26L			TVS07RK-25-26SC
10-660975-430D		10-552629-26N	10-497446-075	4	TVS07RK-25-26SD
10-660975-430E		10-552629-26T			TVS07RK-25-26SE

FOR UNIT ILLUSTRATION AND DIMENSIONAL DATA SEE 10-536197-DS TYPE I

ALTERNATE SHELL ROTATION SEE NOTE 1

CONNECTOR LESS STAMPING SEE NOTE 4 FOR STAMPING REQUIREMENT



SECTION A-A

4. STAMP "AMPHENOL", PART NUMBER, DATE CODE (9-3895), AND LOT NUMBER PER 9-5788  
 EXAMPLE:  
 AMPHENOL 10-660675-430B 13001000 1336

3. PROCESS SPEC:  
 9-3895, 9-5788

2. PACKAGE PER PRODUCTION PROCESS SHEET.

1. KIT TYPE I CONTACTS ARE SHIPPED UNASSEMBLED.  
 KIT TYPE II CONTACTS ARE SHIPPED ASSEMBLED IN CONNECTOR.

**NOTES:**  
 THE USE OF THIS DOCUMENT IS UNLIMITED. HOWEVER, DOCUMENTS REFERENCED HEREON MAY CONTAIN LIMITED RIGHTS DATA.

N/A	PRO/ENGINEER INFORMATION
N/A	Pro/e Model Used: TV060R25-17P.LC.ASSEM
N/A	Drawing Name: 10-660975-430
N/A	NEXT ASSEMBLY

UNLESS OTHERWISE SPECIFIED

SPECIFICATIONS

MATERIAL SPEC. N/A

PROCESS SPEC. SEE NOTE 3

LINEAR DIMENSIONS ARE IN INCHES  
 TOLERANCES:  
 .XXXX = ±.0005 ANGLES = ±2°  
 .XXX = ±.010  
 .XX = ±.03  
 .X = ±.1

DIM. & TOL. PER ASME Y14.5M;  
 DRM PER MIL-DTL-31000;  
 OTHER Amphenol Sds. PER 9-3800

LEGENDS:  
 = FLAG NOTE CALL OUT REFERENCE ONLY

POS	QTY	PART NUMBER	DESCRIPTION	NOTE
4	4	21-033321-005	INSULATOR (NOT SHOWN)	
3	1	10-070524-001	CAP	
2		SEE COLUMN	CONTACT	
1	1	SEE COLUMN	CONNECTOR	

APPROVALS

PREPARED BY	D. ALGER	DATE	31-AUG-13
ENGINEER IN CHARGE	D. FREAR		
DESIGN MANAGER	E. SHEPLER		
DESIGN ACTIVITY GROUP	MILAERO		

THIRD ANGLE PROJECTION

**AMPHENOL CORPORATION**  
 40-60 DELAWARE AVENUE  
 SIDNEY, N.Y. 13838

CONNECTOR, ELECTRICAL PLUG, TYPE TVS07RK-25-26S( ), CRIMP CONTACT

SIZE	CAGE CODE	DOCUMENT NO.	REV.
C	77820	10-660975-430	A

SCALE: 4.0 REF: 10-552540/549 SHEET 1 OF 1

10-660975-430 SHEET 1 OF 1 REV. A

10-660975-430 SHEET 1 OF 1 REV. A