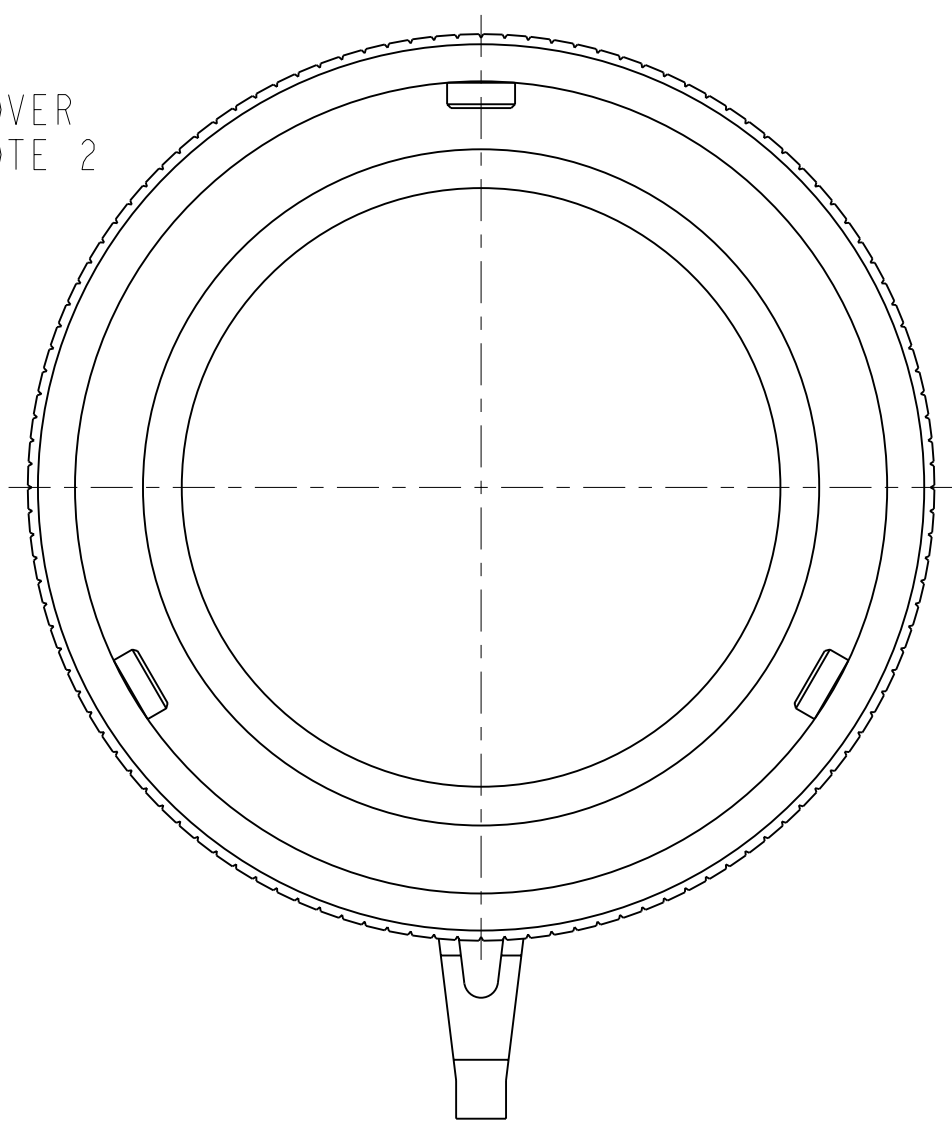
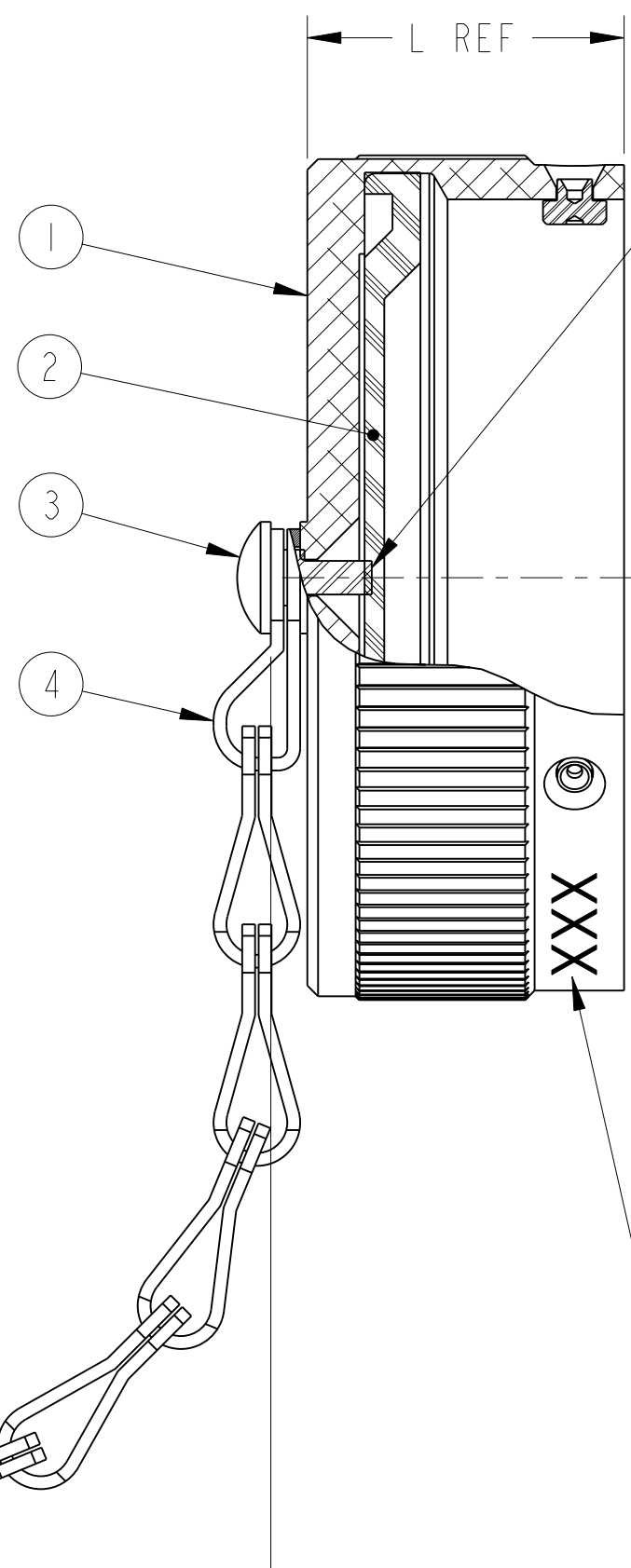
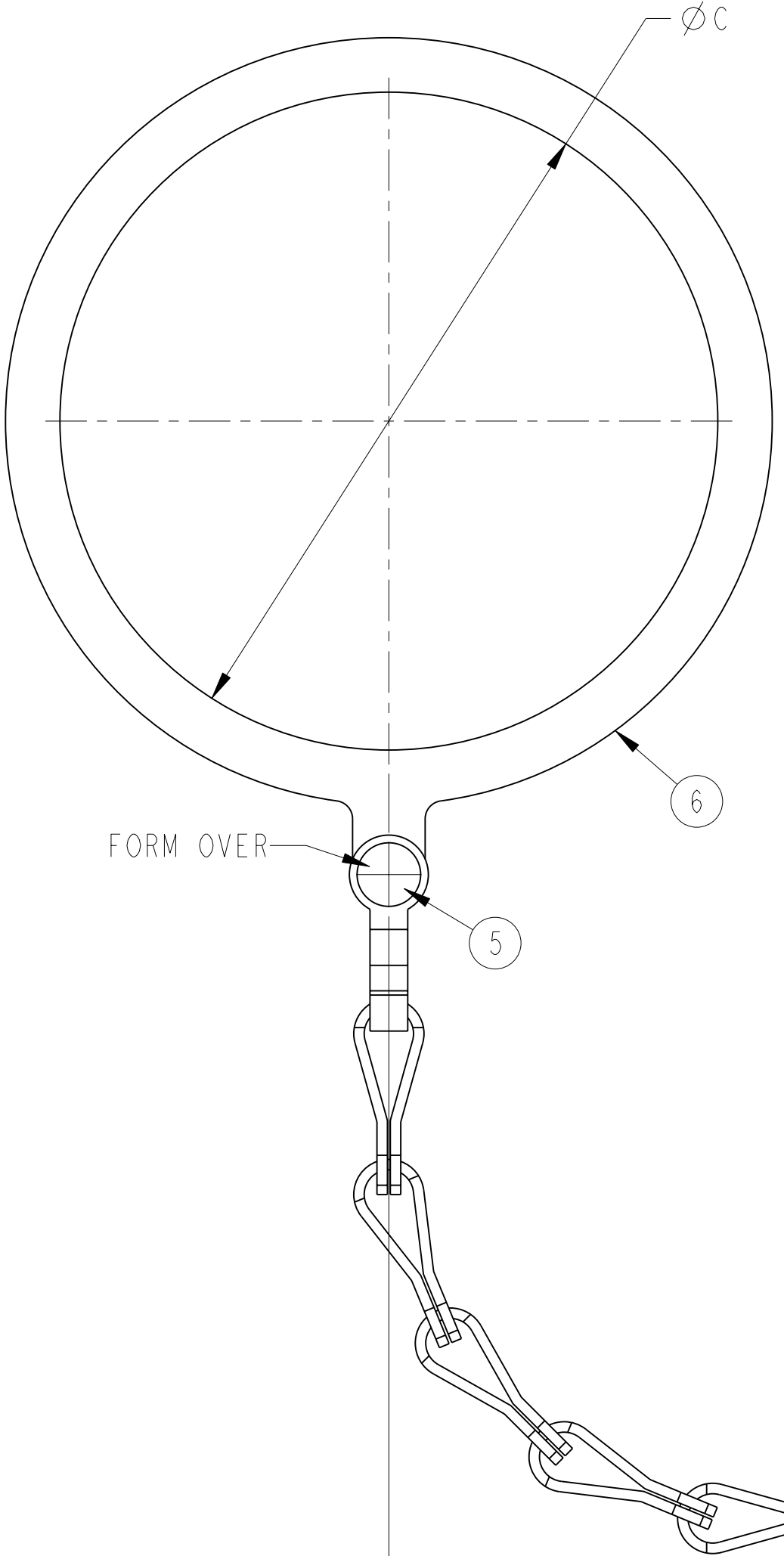
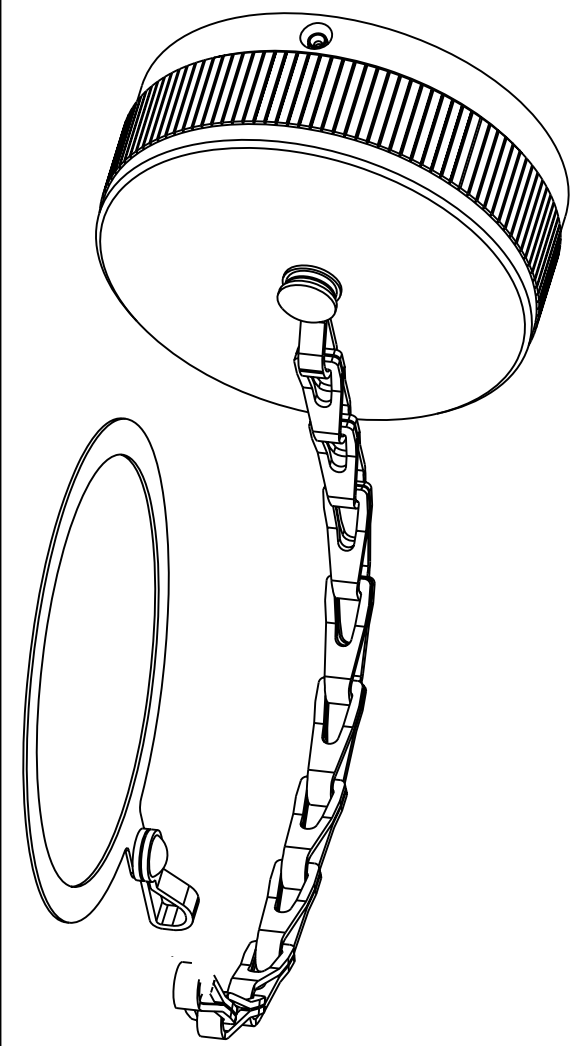


REVISIONS			
LTR	DESCRIPTION	DATE	APPVD
D	(CL11) SEE CHANGE NOTICE ECN:B5443	4/15/13 Prescott	



INK STAMP "AMPHENOL" AND PART NUMBER APPROX .125 HIGH, PER 9-3856-5.
EXAMPLE:
AMPHENOL 10-606163-323

POS	QTY	PART NUMBER	DESCRIPTION	NOTE
6	1	SEE COLUMN	RING, RETAINING	
5	1	10-252992	RIVET	
4	1	SEE COLUMN	CHAIN	
3	1	10-248997	RIVET	
2	1	SEE COLUMN	GASKET	
1	1	SEE COLUMN	CAP ASSEMBLY	

UNLESS OTHERWISE SPECIFIED	SPECIFICATIONS
LINEAR DIMENSIONS ARE IN INCHES	MATERIAL SPEC.
TOLERANCES:	N/A
.XXXX = ±.0005	
.XXX = ±.010	
.XX = ±.03	
.X = ±.1	
ANGLES = ±2°	
OTHER STANDARDS PER 9-3800 AND DOD-D-1000	
THIRD ANGLE PROJECTION	PROCESS SPEC.
	SEE NOTE 1, 9-3856-5 9-1936

APPROVALS		DATE	PARTS LIST		
PREPARED	A. PRESCOTT	28-Apr-99	AMPHENOL CORPORATION		
CHECKED-ENG	A. PRESCOTT	4-28-99	AEROSPACE OPERATIONS SIDNEY, N.Y. 13838		
APPROVED-MATERIAL LAB	N/A R. BARNES	4-28-99	CAP ASSEMBLY, RECEPTACLE, TYPE GT 07, PLATED		
APPROVED-PROCESS	N/A R. BARNES	4-28-99	SIZE	FSCM NO.	DOCUMENT NO.
APPROVED-ENG-IN-CHG	R. BARNES	4-28-99	C	77820	10-606163
APPROVED-QUALITY	N/A	4-28-99	SCALE: 2.0	REF: 10-37399	SHEET 1 OF 2
APPROVED-ENG. MGR	N/A R. BARNES	4-28-99			

SEE SHEET 2

NOTES:
WARNING: IF THIS BOX IS CHECKED: THIS DRAWING HAS BEEN MODIFIED BY HAND-DRAFTING WITHOUT COMPUTER UPDATING

THE USE OF THIS DOCUMENT IS UNLIMITED. HOWEVER, DOCUMENTS REFERENCED HEREON MAY CONTAIN LIMITED RIGHTS DATA.

PRO/ENGINEER INFORMATION	
N/A	Pro/e Model Used: 10-606163.ASSEM
N/A	Drawing Name: 10-606163
NEXT ASSEMBLY	

DOCUMENT NO. 10-606163 SHEET 1 OF 2 REV. D
 C
 B
 A

D
 C
 B
 A
 10-606163 SHEET 1 OF 2 REV. D

PART NUMBER	SIZE	CAP ASSEMBLY	GASKET	CHAIN	RING RETAINING	C DIA MAX	L MAX	R APPROX
10-606163-11()	10SL	10-580916-11()	10-580723-11	NOT AVAILABLE				
10-606163-14()	14S	10-580916-14()	10-580723-14	NOT AVAILABLE				
10-606163-16()	16S	10-580916-16()	10-580723-16	NOT AVAILABLE				
10-606163-17()	16	10-580916-17()	10-580723-17	NOT AVAILABLE				
10-606163-18()	18	10-580916-18()	10-580723-18	NOT AVAILABLE				
10-606163-20()	20	10-580916-20()	10-580723-20	NOT AVAILABLE				
10-606163-22()	22	10-580916-22()	10-580723-22	NOT AVAILABLE				
10-606163-24()	24	10-580916-24()	10-580723-24	10-435973-18	10-35878-282	1.776	.900	6.000
10-606163-28()	28	10-580916-28()	10-580723-28	NOT AVAILABLE				
10-606163-32()	32	10-580916-32()	10-580723-32	10-435973-33	10-35878-362	2.276	.900	7.000
10-606163-36()	36	10-580916-36()	10-580723-36	NOT AVAILABLE				
10-606163-40()	40	10-580916-40()	10-580723-40	NOT AVAILABLE				

SEE NOTE 1

4. APPLY A LIGHT FILM OF LUBE 9-1936 TO EXPOSED SURFACE OF GASKET.
3. CHAIN MUST MOVE FREELY AFTER CAP AND RING ASSEMBLY.
2. A 50 LB AXIAL LOAD APPLIED TO SWAGED END MUST NOT DISLodge RIVETS FROM ORIGINAL POSITION.
1. TO COMPLETE PART NUMBER, ADD APPLICABLE LAST CHARACTER SUFFIX FOR DESIRED FINISH:

FINISH	SUFFIX	SPEC
OLIVE DRAB CADMIUM PLATE	-XX3	9-3047
NICKEL ALLOY PLATE	-XXG	9-6914
NICKEL ALLOY PLATE	-XXH	9-6972
BLACK ZINC COBALT	-XXY	9-9181
BLACK ANODIZE	-XXZ	9-9182

NOTES:

THE USE OF THIS DOCUMENT IS UNLIMITED. HOWEVER, DOCUMENTS REFERENCED HEREON MAY CONTAIN LIMITED RIGHTS DATA.

SIZE C	FSCM NO. 77820	DOCUMENT NO. 10-606163	REV. D
SCALE: 2.0		REF: 10-37399	SHEET 2 OF 2

DOCUMENT NO. 10-606163
 SHEET 2 OF 2
 REV. D
 B
 A
 FORMAT: CPULN REV: 04-MAR-1999 DOC

DOCUMENT NO. 10-606163
 SHEET 2 OF 2
 REV. D
 D
 C
 A