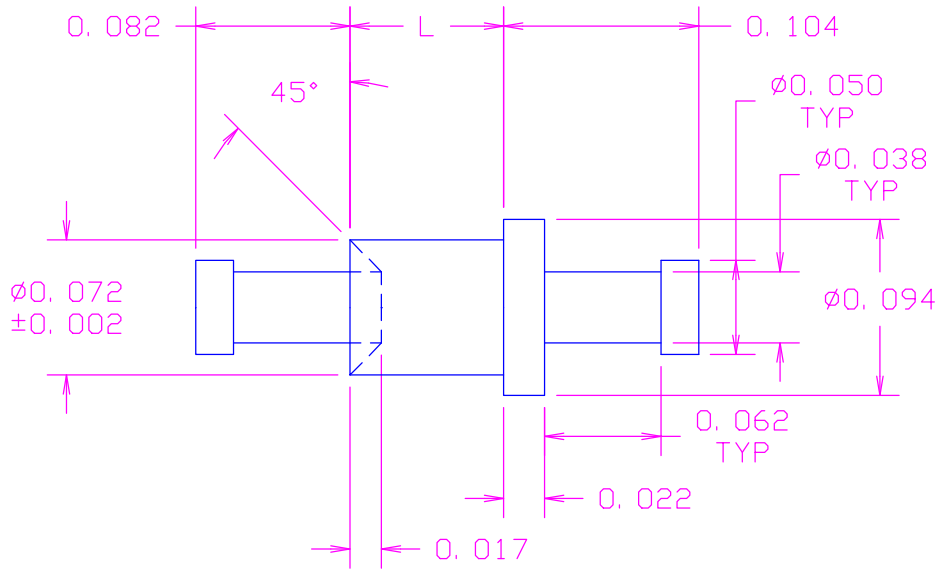


DATE	SYM	REVISION RECORD	AUTH.	DR.	CK.
1/25/00	-	ISSUED		NT	DG



RECOMMENDED MOUNTING HOLE .076 DIA.(#48 DRILL)

MATERIAL: BRASS PER ASTM B16,  
ALLOY C 36000, 1/2 HARD

FINISH: .0003"MIN. SILVER PER QQ-S-365  
TYPE II, GRADE A WITH NON-CHROMATE  
PRESERVATIVE

PART NUMBER:	L:	BOARD THICKNESS:
10-501-1-01	.051	1/32
10-501-2-01	.082	1/16
10-501-3-01	.113	3/32
10-501-4-01	.145	1/8
10-501-6-01	.207	3/16
10-501-8-01	.270	1/4

ACTUAL SIZE



TOLERANCES (EXCEPT AS NOTED)	CONCORD		ELECTRONICS CORPORATION
DECIMAL + .005 - .005	P/N	SCALE	30 GREAT JONES ST. NEW YORK N. Y. 10012
FRACTIONAL + 1/64 - 1/64	TITLE TERMINAL		
ANGULAR + 5° - 5°	DATE 1/25/00	DRAWING NUMBER 10-501-X-01	