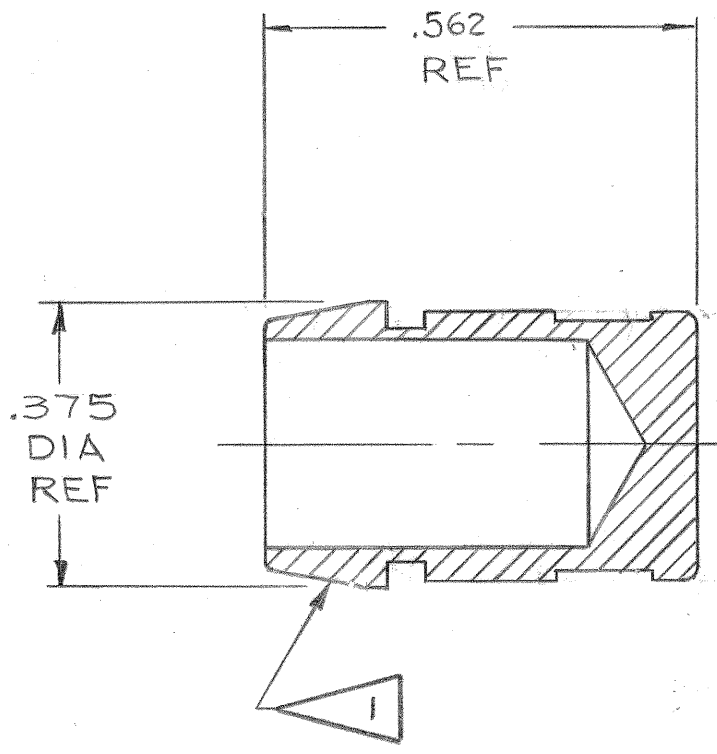


51536-17		REVISIONS		
LTR	DESCRIPTION	DATE	APPROVED	
A ₁	REDRAWN SAME SIZE, REMOVED DIMENSIONAL DATA, SEE RECORD VANDYKE FOR PREVIOUS CHANGES ECN: CNR	WHEELER R.T. 9-4-69	<i>[Signature]</i>	
A ₅	WAS .562 ± .011. REM. 354 ± .005 DIA. ADDED .375 DIA REF. CHGD PICTURE. REMOVED NOTE 2. ECN: CNR	WERTH 10-3-69	<i>[Signature]</i>	
✓ A ₆	ADD MADE FROM 10-482099-8B. ECN: CNR.	WHEELER R.T. 10-15-69	<i>[Signature]</i>	



3. MEAN SURFACE AREA 1.1881 SQ IN.

2.

MADE FROM 10-482099-8B

1. INSTALL WITH TAPERED END FACING HARD DIELECTRIC INSERT, SEAT FIRMLY AGAINST REAR OF OUTER CONTACT.

NOTES:

FIND NO.	QTY REQD	CODE IDENT	PART NUMBER	DESCRIPTION	NOTE REF
PARTS LIST					
USE OF THIS DOCUMENT IS UNLIMITED. DOCUMENTS REFERENCED HEREON CONTAIN LIMITED RIGHTS DATA.					
UNLESS OTHERWISE SPECIFIED LINEAR DIMENSIONS ARE IN INCHES TOLERANCES: .XXX ± .010 .XX ± .03 .X ± .1 ANGLES ± 2° OTHER STANDARDS PER 9-3800 AND MIL-D-1000. NOTE REF <		SIGNATURES PREPARED WHEELER, R.T. CHECKED <i>[Signature]</i>		DATES 9/4/69 9.19.69	
MATERIAL SPEC		MATERIAL <i>[Signature]</i>		APPROVED <i>[Signature]</i>	
PROCESS SPEC ANODIC COAT 9-3290		APPROVED <i>[Signature]</i>		APPROVED <i>[Signature]</i>	
The Bendix Corporation Electrical Components Division Sidney, New York				PLUG, SEALING SIZE 8, LJT-RE COAX	
GENERAL USE NEXT ASSEMBLY					
SIZE B		CODE IDENT NO. 77820		10-482099-8	
SCALE A/1		WT		REF	
SHEET		SHEET		SHEET	

R