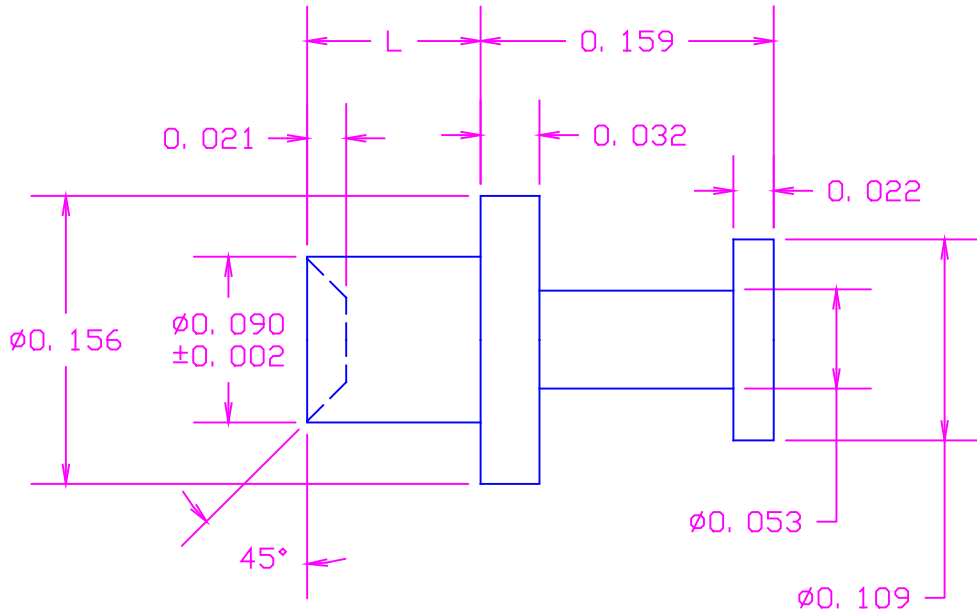


| DATE | SYM | REVISION | RECORD | AUTH. | DR. | CK. |
|---------|-----|----------|--------|-------|-----|-----|
| 1/28/99 | - | ISSUED | | | NT | DG |
| | | | | | | |
| | | | | | | |
| | | | | | | |



RECOMMENDED MOUNTING HOLE .094 DIA. (#42 DRILL)

MATERIAL: BRASS PER ASTM B16,

ALLOY C 36000, 1/2 HARD

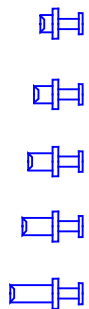
FINISH: .0003"MIN. SILVER PER QQ-S-365,

TYPE II, GRADE A WITH NON-CHROMATE

PRESERVATIVE

| PART NUMBER: | L | T |
|--------------|------|------|
| 10-109-1-01 | .062 | 1/32 |
| 10-109-2-01 | .094 | 1/16 |
| 10-109-3-01 | .125 | 3/32 |
| 10-109-4-01 | .156 | 1/8 |
| 10-109-6-01 | .219 | 3/16 |

ACTUAL SIZE



| | | | |
|----------------------|---------------------------------|-------------------------------|--|
| TOLERANCES | CONCORD ELECTRONICS CORPORATION | | |
| DECIMAL ± .005 | P/N | SCALE | 30 GREAT JONES ST. NEW YORK N. Y. 10012 |
| FRACTIONAL ± 1/64 | TITLE TERMINAL | | |
| ± 5° | DATE 1/28/99 | DRAWING NUMBER 10-109-X-01 | |