

RAMO 30 K, M12, round collar, 2 NO, Gold, M12 4-pin A-coded, frontring stainless steel, 2 x 40°, momentary contact function, key removal position 0




fields of application

- > Measurement-control-regulation
- > Electrical engineering
- > Mechanical and system engineering
- > Signalling systems
- > Vehicle construction
- > Chemical industry
- > Industrial robots

special features

- > Precise haptics
- > Safe gold contacts
- > Simple M12 plug&play connection
- > Protected contacts due to sealed housing



description

Keylock switch with various switching positions and M12 terminal

technical data

> general

illuminated	No
Color	black
Collar color	black
Front ring color	stainless steel
Collar shape	round
Operating temperature, min.	-40 °C
Operating temperature, max.	85 °C
Storage temperature, min.	-40 °C
Storage temperature, max.	90 °C
Shock resistance according to standard IEC 60068-2-27	30 g at 11 ms amplitude semi-sinusoidal
Packaging	Box
Packaging unit	2 pcs.
standard delivery time	3 weeks
Environment resistance	IEC 60068-2-14 IEC 60068-2-30 IEC 60068-2-78
Operating life	300,000 Cycles
B10	429,962 Cycles
Degree of protection, front side, according to DIN EN 60529	IP65

direct links

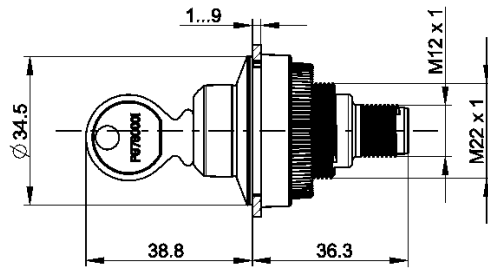
- > [RAFI eCatalog](#)

Degree of protection, rear side, according to DIN EN 60529	IP65
UL Enclosure Type Rating front side	type 4X
Salt-spray resistance according to standard	IEC 60068-2-11
RoHS compliant	Yes
REACH compliant	Yes
Potential free	no
oscillation resistance according to standard IEC 60068-2-6	5 g at 10...500 Hz
MOQ order	2
> mounting diameters	
Mounting hole	30.3 mm
Mounting depth	36.3 mm
Installation height	38.8 mm
Grid, min.	35 mm
Outside dimension, width	34.5 mm
> mechanical data	
Actuation function	momentary contact function
Operating force, max.	1.3 N
Contact function	2 NO
Contact material	Gold
Locking position	001
Key removal position	0
Rotating angle	2 x 40°
Fixing	Threaded ring
Threaded ring torque, max.	1.2 Nm
Terminal on the rear	M12 4-pin A-coded
PIN 1	Normally open contact 1 Normally open contact 2
PIN 2	Normally open contact 2
PIN 4	Normally open contact 1
> electrical data	
Rated insulation voltage	250 V
Rated surge voltage	2,500 V
Rated voltage, min.	1 V
Rated voltage, max.	32 V
Rated current, max.	0.1 A
Kind of short circuit protective device	fuse 250 V / 0,1 A / 1,5 kA gG quick
Rated operating voltage	35 V (AC-15) 35 V (DC-13)
Rated operating current	0.1 A
Pollution degree acc. to DIN EN 61010-1	Pollution degree 2
Overvoltage category	2

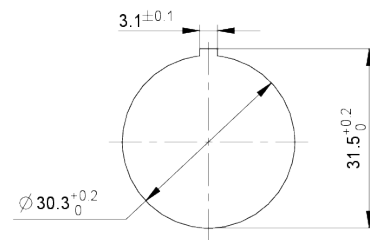
Conditional short circuit current 1,000 A

drawings

Dimensioned drawing



Mounting hole drawing



Schematic diagram

