

1-87146-4 ✓ ACTIVE

AMPMODU | AMPMODU IV/V

TE Internal #: 1-87146-4

Housing, Receptacle, Wire-to-Board, 40 Position, .15 in [3.81 mm]

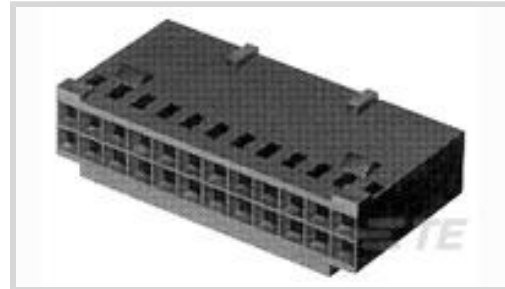
Centerline, Crimp, 2 Row, Black, Wire & Cable, Signal, AMPMODU

IV/V

[View on TE.com >](#)



Connectors > PCB Connectors > Wire-to-Board Connectors > Wire-to-Board Connector Assemblies & Housings



Connector Product Type: **Housing**

Connector & Housing Type: **Receptacle**

Connector System: **Wire-to-Board**

Number of Positions: **40**

Centerline (Pitch): **3.81 mm [ .15 in ]**

## Features

### Product Type Features

Connector Product Type	Housing
Connector & Housing Type	Receptacle
Connector System	Wire-to-Board
Connector & Contact Terminates To	Wire & Cable

### Configuration Features

Number of Positions	40
Number of Rows	2

### Electrical Characteristics

Operating Voltage	250 VAC
-------------------	---------

### Body Features

Primary Product Color	Black
-----------------------	-------

### Contact Features

Contact Type	Socket
Contact Base Material	Beryllium Copper
Contact Current Rating (Max)	3 A

### Termination Features

Termination Method to Wire & Cable	Crimp
------------------------------------	-------



### Mechanical Attachment

Strain Relief	Without
Mating Retention	Without

### Housing Features

Housing Material	Nylon - GF
Centerline (Pitch)	3.81 mm [.15 in]

### Dimensions

Connector Length	75.95 mm [2.99 in]
Connector Height	7.36 mm [.29 in]
Row-to-Row Spacing	3.81 mm [.15 in]

### Usage Conditions

Operating Temperature Range	-65 – 105 °C [-85 – 221 °F]
-----------------------------	-----------------------------

### Operation/Application

Circuit Application	Signal
---------------------	--------

### Industry Standards

Glow Wire Rating	Standard Part - Not Glow Wire
UL Flammability Rating	UL 94V-0

### Packaging Features

Packaging Quantity	1
Packaging Method	Package

### Product Compliance

For compliance documentation, visit the product page on [TE.com](https://www.te.com)>

EU RoHS Directive 2011/65/EU	Compliant
EU ELV Directive 2000/53/EC	Compliant
China RoHS 2 Directive MIIT Order No 32, 2016	No Restricted Materials Above Threshold
EU REACH Regulation (EC) No. 1907/2006	Current ECHA Candidate List: JUNE 2024 (241) Candidate List Declared Against: JAN 2024 (240) Does not contain REACH SVHC
Halogen Content	BFR/CFR/PVC Free, but Br/Cl >900 ppm in other sources.
Solder Process Capability	Not applicable for solder process capability

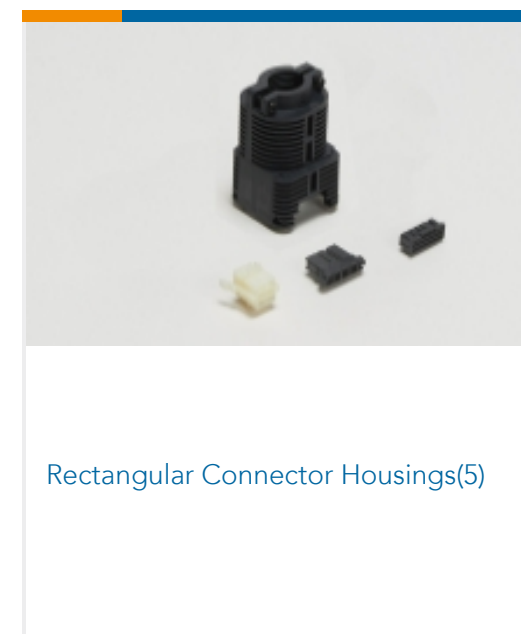
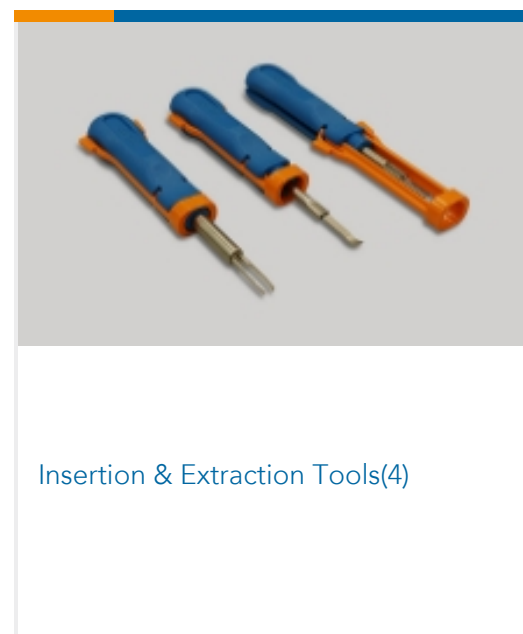
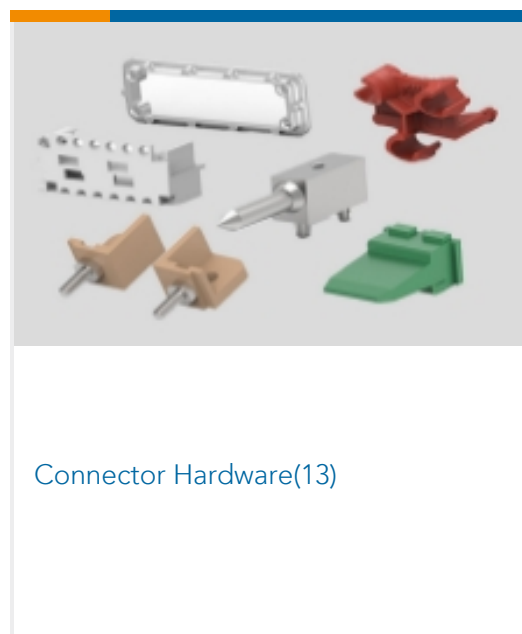
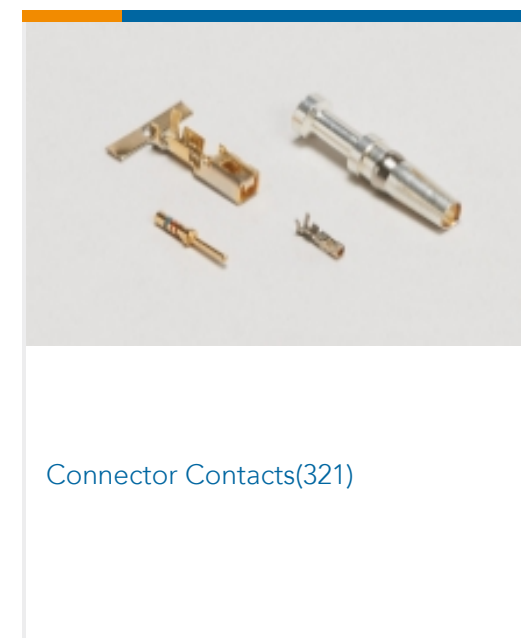
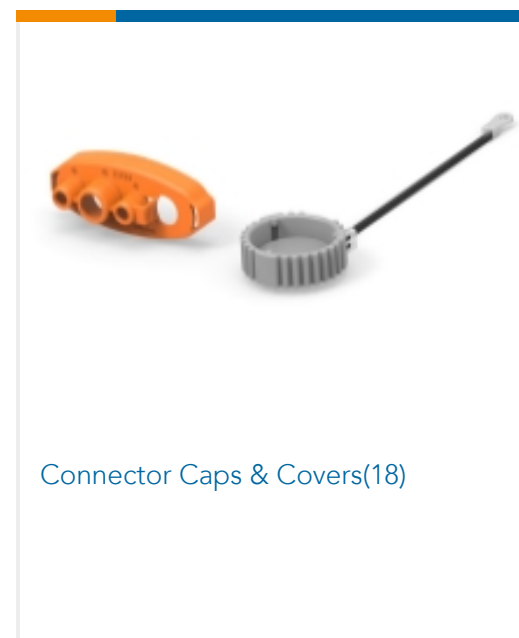
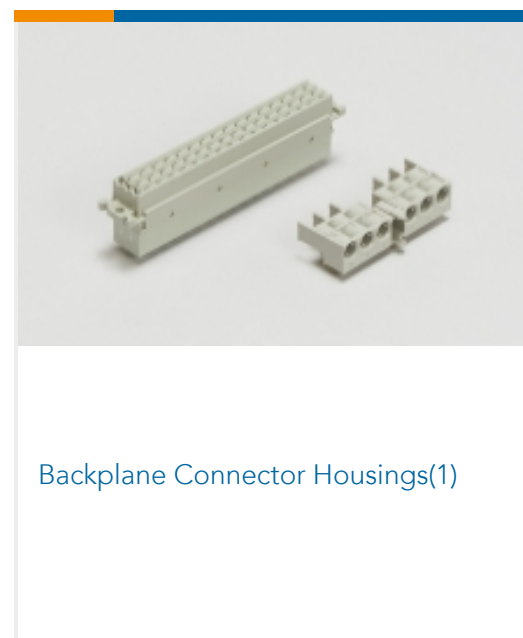
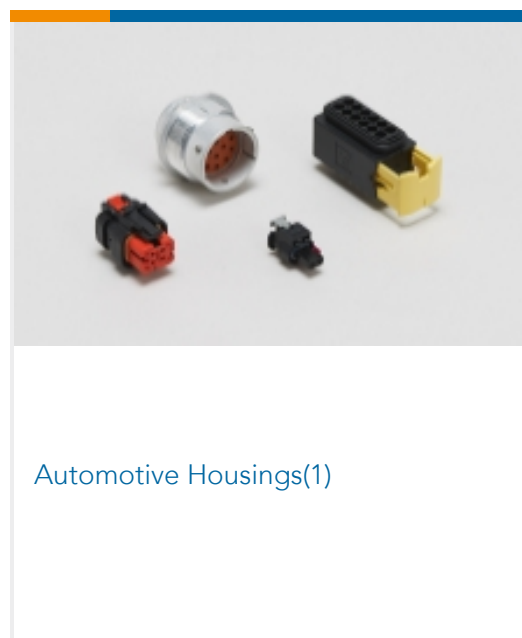
Product Compliance Disclaimer

This information is provided based on reasonable inquiry of our suppliers and represents our current actual knowledge based on the information they provided. This information is subject to change. The part numbers that TE has identified as EU RoHS compliant have a maximum concentration of 0.1% by weight in homogenous materials for lead, hexavalent chromium, mercury, PBB, PBDE, DBP, BBP, DEHP, DIBP, and 0.01% for cadmium, or qualify for an exemption to these limits as defined in the Annexes of Directive 2011/65/EU (RoHS2). Finished electrical and electronic equipment products will be CE marked as required by Directive 2011/65/EU. Components may not be CE marked. Additionally, the part numbers that TE has identified as EU ELV compliant have a maximum concentration of 0.1% by weight in homogenous materials for lead, hexavalent chromium, and mercury, and 0.01% for cadmium, or qualify for an exemption to these limits as defined in the Annexes of Directive 2000/53/EC (ELV). Regarding the REACH Regulation, the information TE provides on SVHC in articles for this part number is based on the latest European Chemicals Agency (ECHA) 'Guidance on requirements for substances in articles' posted at this URL: <https://echa.europa.eu/guidance-documents/guidance-on-reach>

## Compatible Parts



## Also in the Series | AMPMODU IV/V





Standard Rectangular Connectors(8)



Wire-to-Board Connector Assemblies & Housings(438)

## Customers Also Bought



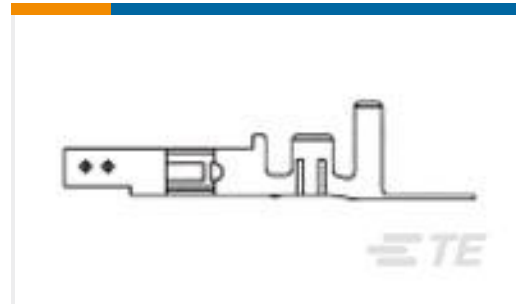
TE Part #5748676-5  
DIE CAST CBL CLMP KIT,SZ 5



TE Part #1-794617-0  
10POS,MICRO MNL,RCPT HSG



TE Part #770377-1  
UMNL II KEYING PLUG



TE Part #2238017-1  
VAL-U-LOK SKT BR SN 18-22AWG



TE Part #2015699-1  
RF CA,UMCC GEN1-GEN1,0.81MM CABLE,L100MM



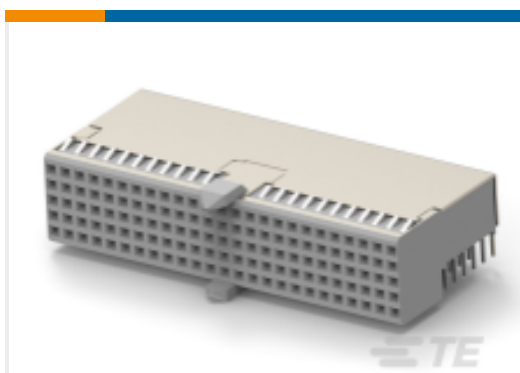
TE Part #314-120  
PE CABLE, 10-32 TO BNC



TE Part #4-2176330-6  
CRGP 2010 56K 1%



TE Part #4-1625867-9  
RP 1J 0.166W 19R6 0.1% 25PPM 1K RL



TE Part #3-5646547-0  
Z-PACK A-B 25 COLUMN SHLD ASSY



TE Part #91067-1  
INSERTION/EXTRACTION TOOL

## Documents

### Product Drawings

[40 MODIV HSG COMP DR .150CL](#)

English

### Product Specifications

[Product Specification](#)

English