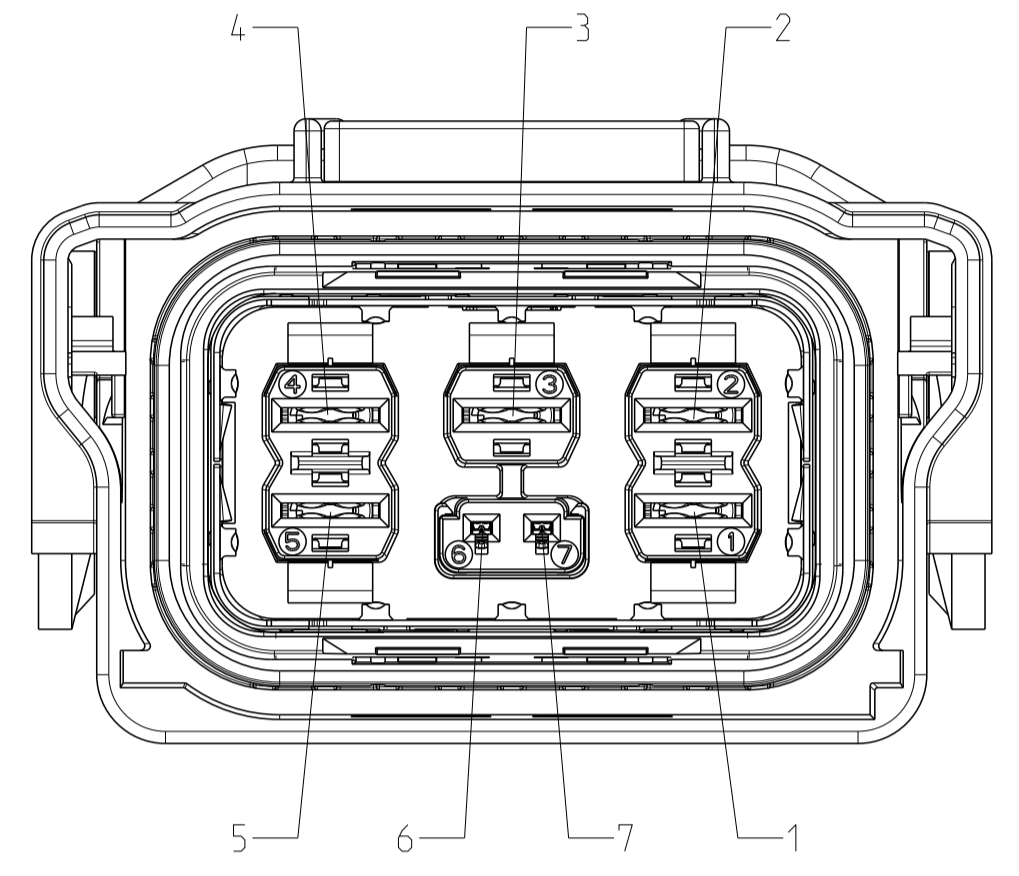
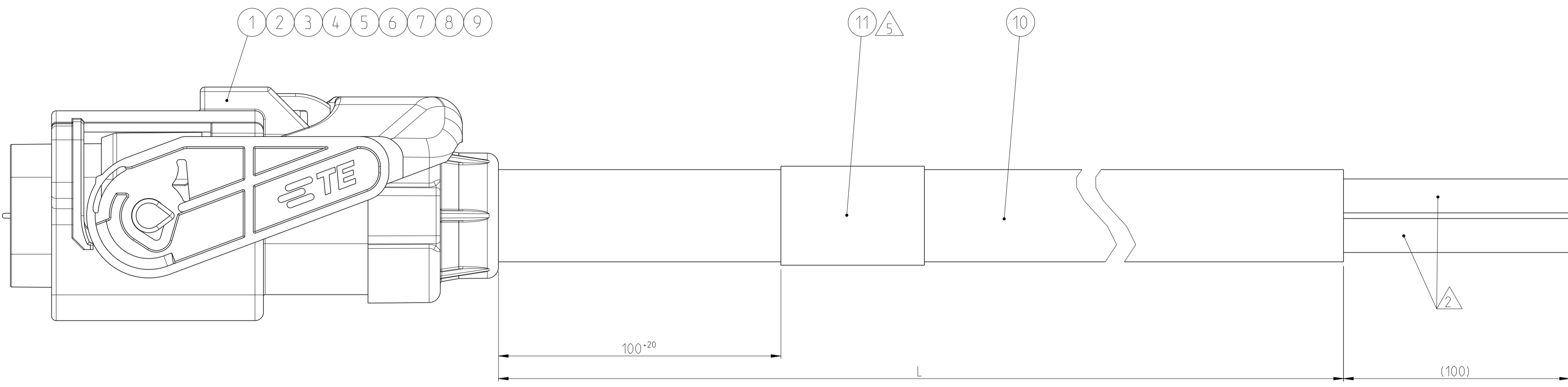


THE DRAWING SHOWS THE 2-DIMENSIONAL REFERENCE COMPONENT CONDITION OF THE ASSEMBLY TO IDENTIFY AND SPECIFY THE NECESSARY DIMENSIONS ONLY. THE DELIVERED PARTS MAY DEVIATE FROM THE DRAWING REGARDING THE ORIENTATION AND POSITION OF EACH COMPONENT (e.g. SLACK CABLE), SO FAR THE FUNCTIONALITY IS NOT CONCERNED.

DIE ZEICHNUNG ZEIGT DEN 2-DIMENSIONALEN IDEALZUSTAND DES ZUSAMMENBAUTEILS BEZÜGLICH DER KOMPONENTEN ZUR IDENTIFIKATION UND SPEZIFIKATION DER NOTWENDIGEN DIMENSIONEN. HINSICHTLICH DER ORIENTIERUNG UND DER LAGE DER KOMPONENTEN (Z.B. BIEGESCHLAPTES KABEL) KÖNNEN DIE DELIEFERTEN TEILE VON DER ZEICHNUNG ABWEICHEN, SOFERN DIE FUNKTIONALITÄT NICHT BEEINTRÄCHTIGT IST.

PROJEKT NR.: PRJ-13-00000362

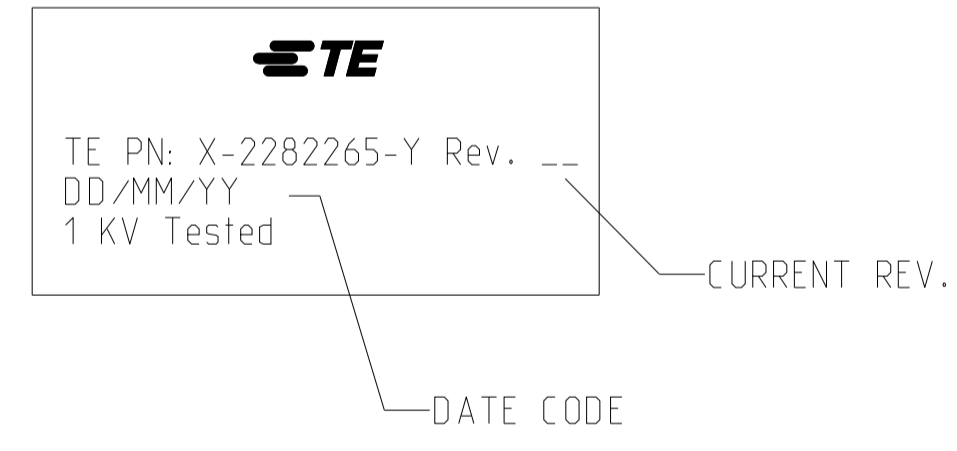
REVISIONS		DATE	DWN	APVD
REV	DESCRIPTION			
H	BOM REVISION UPDATED	25MAY2018	DS	JJ
H1	NEW VARIANTS ADDED	04SEP2018	JM	DB
J	COMPONENT REVISION CHANGE	31OCT2018	JS	JS



WIRING SCHEDULE:

CAVITY-NO.	WIRE COLOR
1	GREEN-YELLOW
2	GREY
3	BLACK
4	BROWN
5	BLUE

5 LABEL LEGEND:



LENGTH SCHEDULE:

WITHOUT CPA				
TE PART NO.	REV.	LENGTH L [mm]	TOL [mm]	
1-2282265-1	H	1000	+30	J
1-2282265-2	H	2000	+35	
1-2282265-3	H	3000	+40	
1-2282265-4	H	4000	+50	
1-2282265-5	H	5000	+60	
1-2282265-6	F	6000	+70	
1-2282265-7	B	10000	+110	
WITH CPA				
2-2282265-1	H	1000	+30	J
2-2282265-2	H	2000	+35	
2-2282265-3	H	3000	+40	
2-2282265-4	H	4000	+50	
2-2282265-5	H	5000	+60	
2-2282265-6	F	6000	+70	
2-2282265-7	B	10000	+110	

NOTES

- 1 Min. bending radius HV cables: min. 4x cable D (fixed installation)
- Electrical test according TE specification 108-18857, Chapter 3.3. Use current revision always. Stripped outer jacket, braid, inner sheath and cut filler for electrical test purpose.
- TE Product Specifications: 108-94235
TE Application Specification: 114-18388 (AMP MCP 6.3/4.8K Contact System) 114-94114
- Packaging
- Each part in plastic bag. Harness in carton box.
- Damages to be avoided
- Label:
- Printed with TE part number, TE revision, production date

QTY	QTY	DESCRIPTION	ITEM NO.
2-X	1-X		
1	1	LABEL TAG6TD1-1206-WHCL	11
-	-	CABLE, 5x6 mm ²	10
1	1	COVER, CABLE SEAL	9
1	1	CARRIER, SEAL	8
1	1	RADIAL SEAL 25 X 43, CABLE SEAL	7
1	1	SHIELD CRIMP FERRULE	6
1	1	SHIELD CRIMP FERRULE, INNER	5
2	2	SHIELDING, 5-2 POS HV CONN	4
5	5	MCP6.3/4.8K CONTACT	3
1	1	2 POS. MCON-1.2, REC HSG. ASSY. CODE A	2
1	-	5 POS. AMP MCP6.3/4.8K, REC HSG. A, WITH CPA	1
-	1	5 POS. AMP MCP6.3/4.8K, REC HSG. A, WITHOUT CPA	1

PRODUCT CHARACTERISTICS ACC. QMP EMEA_12 BESONDERE MERKMALE NACH QMP EMEA_12	TOLERANCING ISO 8015 TOLERIERUNG ISO 8015
DIESE ZEICHNUNG IST EIN KONTROLLIERTES DOKUMENT. BEMASSUNGEN UND TOLERANZEN GEMAESS GPS (ISO STANDARDS).	
THIS DRAWING IS A CONTROLLED DOCUMENT. DIMENSIONING AND TOLERANCING PER GPS (ISO STANDARDS)	
DIMENSIONS: MASSENHEITEN: mm	TOLERANCES UNLESS OTHERWISE SPECIFIED: ALL DIMENSIONS
0 PLC ±	1 PLC ±
2 PLC ±	3 PLC ±
4 PLC ±	5 PLC ±
ANGLES/WINKEL	FINISH/OBERFLÄCHE/FARB
MATERIAL	WEIGHT GEWICHT
-	-
-	CUSTOMER DRAWING

TE TE Connectivity

NAME: 5 POS. HV, CONNECTOR, PIGTAIL, HYB ASSY
5x6 sqmm

SIZE: A1 CAGE CODE: 00779 DRAWING NO: 2282265
REVISION: 1

RESTRICTED TO NEW PUR

SCALE: 2:1 SHEET 1 OF 1