

1-2141968-3 ✓ ACTIVE

Generation Y Connector System

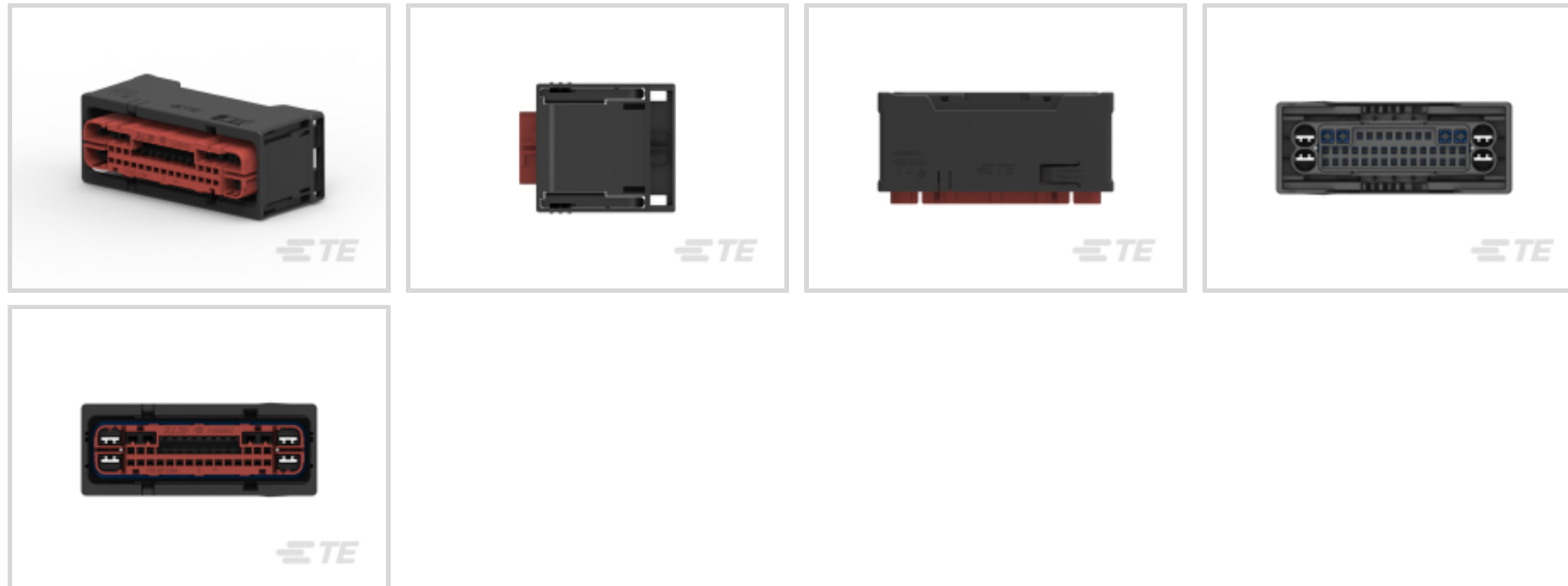
TE Internal #: 1-2141968-3

Housing for Female Terminals, Wire-to-Board / Wire-to-Device, 46 Position, Sealable, Black, Power & Signal, Generation Y Connector System

[View on TE.com >](#)



Connectors > Automotive Connectors > Automotive Housings



Connector System: **Wire-to-Board, Wire-to-Device**

Number of Positions: **46**

Connector & Housing Type: **Housing for Female Terminals**

Sealable: **Yes**

Mating Tab Width: **.64 mm, 2.8 mm, 6.3 mm [.025 in, .11 in, .248 in]**

Features

Product Type Features

Mixed & Hybrid Connector	Yes
Connector Shape	Rectangular
Connector System	Wire-to-Board, Wire-to-Device
Connector & Housing Type	Housing for Female Terminals
Sealable	Yes
Primary Locking Feature	Integrated in Housing

Configuration Features

Blank Cavity Position	20, 21, 22, 23, 25, 26, 28, 29, 31, 32, 33, 34, 36, 37, 38, 40, 44, 45
Number of Positions	46

Body Features

Primary Product Color	Black
Connector & Keying Code	A

Contact Features



Contact Size	.64mm, 2.8mm, 6.3mm
Contact Type	Receptacle
Mating Tab Width	.64 mm, 2.8 mm, 6.3 mm [.025 in][.11 in][.248 in]

Mechanical Attachment

Terminal Position Assurance	Yes
Strain Relief	Without
Mating Alignment Type	Keyed
Mating Alignment	With
Connector Mounting Type	Cable Mount (Free-Hanging)

Housing Features

Housing Material	PBT GF
------------------	--------

Dimensions

Connector Height	38.8 mm[1.52 in]
Product Width	35.8 mm[1.4 in]
Product Length	92 mm[3.62 in]

Operation/Application

Circuit Application	Power & Signal
---------------------	----------------

Packaging Features

Packaging Quantity	120
Packaging Method	Box

Other

Connector Position Assurance Capable	No
--------------------------------------	----

Product Compliance

[For compliance documentation, visit the product page on TE.com>](#)

EU RoHS Directive 2011/65/EU	Compliant
EU ELV Directive 2000/53/EC	Compliant
China RoHS 2 Directive MIIT Order No 32, 2016	No Restricted Materials Above Threshold
EU REACH Regulation (EC) No. 1907/2006	Current ECHA Candidate List: JUNE 2023 (235) Candidate List Declared Against: JUNE 2023 (235) Does not contain REACH SVHC

Halogen Content	Low Halogen - Br, Cl, F, I < 900 ppm per homogenous material. Also BFR/CFR/PVC Free
Solder Process Capability	Not reviewed for solder process capability

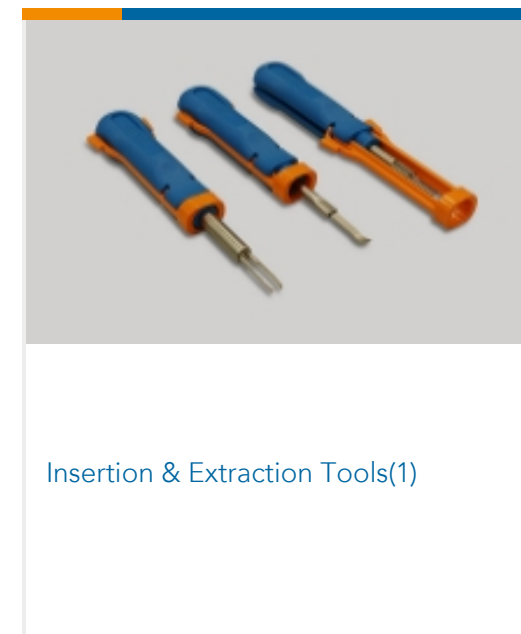
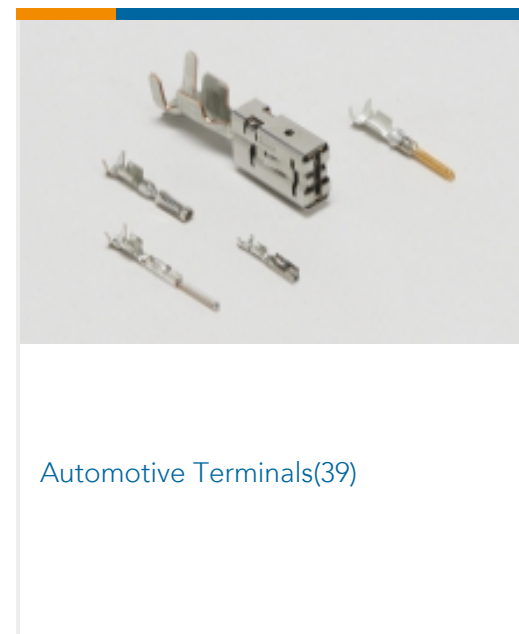
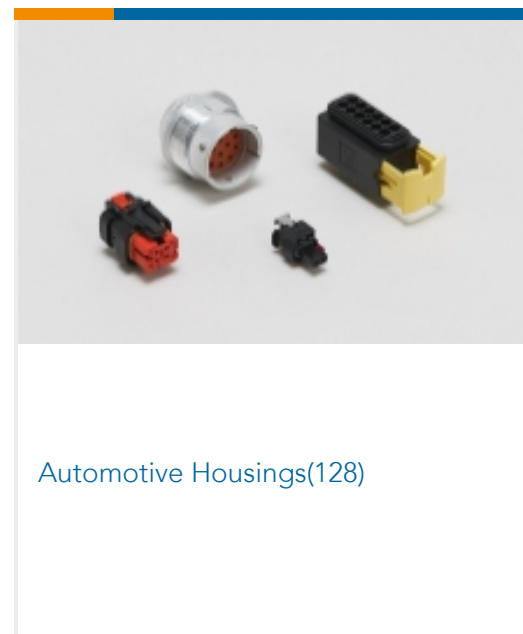
Product Compliance Disclaimer

This information is provided based on reasonable inquiry of our suppliers and represents our current actual knowledge based on the information they provided. This information is subject to change. The part numbers that TE has identified as EU RoHS compliant have a maximum concentration of 0.1% by weight in homogenous materials for lead, hexavalent chromium, mercury, PBB, PBDE, DBP, BBP, DEHP, DIBP, and 0.01% for cadmium, or qualify for an exemption to these limits as defined in the Annexes of Directive 2011/65/EU (RoHS2). Finished electrical and electronic equipment products will be CE marked as required by Directive 2011/65/EU. Components may not be CE marked. Additionally, the part numbers that TE has identified as EU ELV compliant have a maximum concentration of 0.1% by weight in homogenous materials for lead, hexavalent chromium, and mercury, and 0.01% for cadmium, or qualify for an exemption to these limits as defined in the Annexes of Directive 2000/53/EC (ELV). Regarding the REACH Regulation, the information TE provides on SVHC in articles for this part number is based on the latest European Chemicals Agency (ECHA) 'Guidance on requirements for substances in articles' posted at this URL: <https://echa.europa.eu/guidance-documents/guidance-on-reach>

Compatible Parts



Also in the Series | Generation Y Connector System



Customers Also Bought



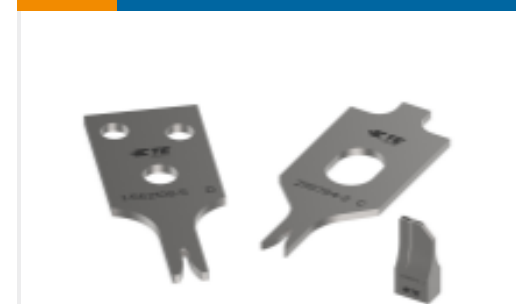
TE Part #5053046034
RNF-100-3/16-0-50MM



TE Part #2141826-5
MQS0,63 Au rec LL EDS 0,08-0,22



TE Part #5-1803171-6
ANVIL



TE Part #7-2836148-7
OC-160F190OV-CRIMPTOOLINGKIT



TE Part #2836951-2
OCEAN_2.0_Applicator-S-236F335O



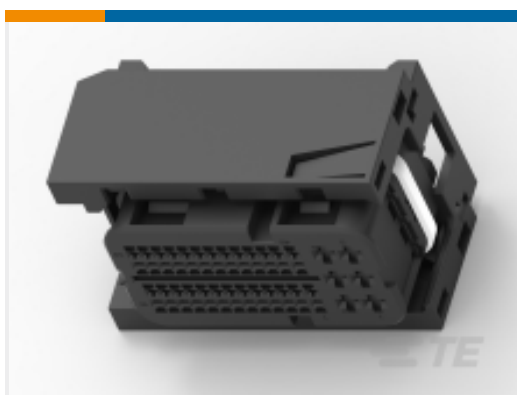
TE Part #2836953-2
OC-AT-S-FA-218F289F-061-1521



TE Part #2836954-2
OCEAN-2.0-APPLICATOR-S-190F244F



TE Part #1-2098922-4
SDM,54P PLUG ASY,RHL,KEY B



TE Part #3-1564285-2
58POS, MIXED,REC HSG,ASSY



TE Part #5-2098922-8
SDM,54P PLUG ASY,RHL,KEY D

Documents

Product Drawings

[46POS,0.64 GENER. Y,REC HSG,ASSY,SLD](#)

English

CAD Files

[3D PDF](#)

3D

Customer View Model

[ENG_CVM_CVM_1-2141968-3_B1.3d_igs.zip](#)

English

Customer View Model

[ENG_CVM_CVM_1-2141968-3_B1.3d_stp.zip](#)

English

Customer View Model

[ENG_CVM_CVM_1-2141968-3_B1.2d_dxf.zip](#)

English

By downloading the CAD file I accept and agree to the [Terms and Conditions](#) of use.



[Product Specifications](#)

[Application Specification](#)

English