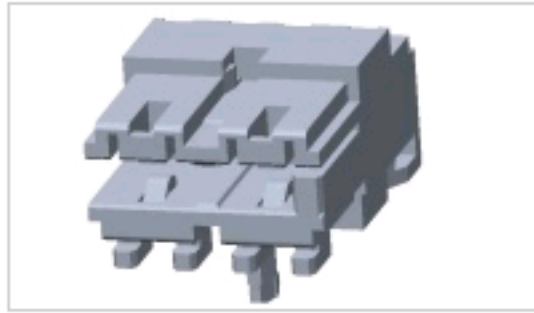


# 1-1740533-4 Product Details

[Share](#) [Print](#) [Email](#)


Active  
[View 3D PDF](#)

## 2.5mm & 5mm Centerline Connector System (AMP DUOPLUG)

AMP DUOPLUG POW CONN. 4POS W.PCB LOCKING

**1-1740533-4**

TE Internal Number: 1-1740533-4

**Product Highlights** [View All](#)

- Connector
- 5.00 mm Centerline
- Connector Assembly
- Connector Style = Receptacle
- Contact Type = Socket

[Pricing & Availability](#)

[Request Sample](#)

[Add to My Part List](#)

[Buy Product through Distributor](#)

[Documents](#) | [Features](#) | [Compliance](#)

**Please Note:**  
Use the Product Drawing for all design activity

**Product Type Features**

Product Type	Connector
Connector Type	Connector Assembly
Wire/Cable Type	Stranded
Wire Size (mm <sup>2</sup> [AWG])	0.35-0.75 <sup>2</sup> [22-18]
Wire Insulation Diameter (mm [in])	2.20 [0.087]
Color	Blue

**Termination Features**

Termination Method to Wire/Cable	Insulation Displacement Crimp (IDC)
----------------------------------	-------------------------------------

**Body Features**

Selectively Loaded	No
Keying Between Cavity Number(s)	2/3

**Contact Features**

Contact Type	Socket
Contact Base Material	CuNiSi
Contact Plating, Mating Area, Material	Tin

**Housing Features**

Centerline (mm [in])	5.00 [0.197]
Connector Style	Receptacle
Housing Material	PA6 GF

**Configuration Features**

Number of Positions	4
---------------------	---

**Industry Standards**

RoHS/ELV Compliance	RoHS compliant, ELV compliant
Lead Free Solder Processes	Not relevant for lead free process
RoHS/ELV Compliance History	Always was RoHS compliant
UL Flammability Rating	UL 94V-0

**Conditions for Usage**

Applies To	Wire/Cable
For Use With	PCB Frame

**Operation/Application**

Industry Application	Appliances
----------------------	------------

**Packaging Features**

Packaging Quantity	1,848
--------------------	-------

**Other**

Brand	TE Connectivity
-------	-----------------

**Related Products**

Not quite the product you're looking for?  
[Find Similar Products](#)

[View Part in Product Feature Selector](#)

[Check for Tooling](#)

Feedback

**Corporate Information**

- [About TE](#)
- [Investors](#)
- [News Room](#)
- [Supplier Portal](#)
- [Careers](#)
- [Terms of Use of TE.com](#)
- [Privacy Policy](#)
- [Global Accessibility Statement](#)

**Quick Links**

- [Distributor Inventory](#)
- [Product Cross Reference](#)
- [Documents & Drawings](#)
- [Product Compliance Support Center](#)
- [Site Map](#)
- [Terms & Conditions of Sale](#)

**Customer Support**

- [Email or Chat With Us](#)
- [Find a Phone Number](#)
- [Knowledge Base](#)
- [Manage Your Account](#)

**Keep Me Informed**

