



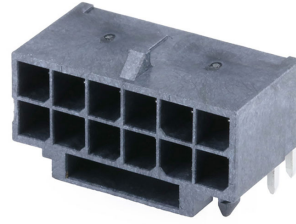
Part Number : [2191160161](#)

Product Description : Micro-Fit+ PCIe CEM5 Right-Angle Header, Through Hole, 3.00mm Pitch, Dual Row, 16 Circuits (12 Power, 4 Signal), Matte Tin (Sn) Plating, Black, Tray

Series Number : 219116

Status : Active

Product Category : PCB Headers and Receptacles



Documents & Resources

Drawings

[2191160161_sd.pdf](#)

[2191160161-PK.pdf](#)

3D Models and Design Files

[2191160161_stp.zip](#)

Specifications

[2191160001-AS-000.pdf](#)

[2191160001-PS-000.pdf](#)

[2191160001-TS-000.pdf](#)

Product Environment Compliance

Compliance

GADSL/IMDS	Not Relevant
China RoHS	
EU ELV	Not Relevant
Low-Halogen Status	Low-Halogen per IEC 61249-2-21
REACH SVHC	Not Contained per D(2024)6225-DC (07 Nov 2024)
EU RoHS	Compliant per EU 2015/863

Multiple Part Product Compliance Statements

- Eu RoHS
- REACH SVHC
- Low-Halogen

Multiple Part Industry Compliance Documents

- IPC 1752A Class C
- IPC 1752A Class D
- Molex Product Compliance Declaration
- IEC-62474
- chemSHERPA (xml)

EU RoHS Certificate of Compliance

Part Details

General

Status	Active
Category	PCB Headers and Receptacles
Series	219116
Description	Micro-Fit+ PCIe CEM5 Right-Angle Header, Through Hole, 3.00mm Pitch, Dual Row, 16 Circuits (12 Power, 4 Signal), Matte Tin (Sn) Plating, Black, Tray
Application	Power, Signal, Wire-to-Board
Component Type	PCB Header
Product Name	Micro-Fit+ PCIe
UPC	196823270406

Electrical

Current - Maximum per Contact	9.2A (Power), 1.0A (Signal)
Voltage - Maximum	600V AC (RMS)/DC

Physical

Breakaway	No
Circuits (Loaded)	16
Circuits (maximum)	16
Color - Resin	Black
Durability (mating cycles max)	30
First Mate / Last Break	Yes
Glow-Wire Capable	Yes
Keying to Mating Part	None
Lock to Mating Part	Yes

Material - Metal	High Copper Alloy
Material - Plating Mating	Matte Tin
Material - Plating Termination	Matte Tin
Material - Resin	Liquid Crystal Polymer
Net Weight	1.897/g
Number of Rows	2
Orientation	Right Angle
Packaging Type	Tray
PC Tail Length	3.18mm
PCB Retention	Yes
PCB Thickness - Recommended	1.57mm
Pitch - Mating Interface	3.00mm
Pitch - Termination Interface	3.00mm
Plating min - Mating	1.524µm
Polarized to Mating Part	Yes
Polarized to PCB	Yes
(p)ower-(s)ignal Configuration	12p - 4s
Shrouded	Yes
Temperature Range - Operating	-40° to +105°C
Termination Interface Style	Through Hole

Mates With / Use With

Mates with Part(s)

Description	Part Number
Micro-Fit+ PCIe CEM5 Dual Row Receptacle Housings	<u>219114</u>