



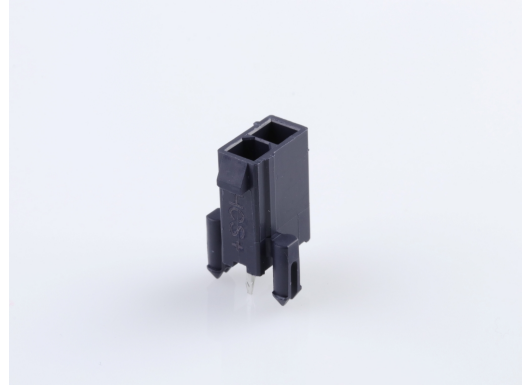
**Part Number :** [1726750213](#)

**Product Description :** Mini-Fit Plus HCS Header, Dual Row, Vertical, 2 Circuits, with Snap-in Plastic Peg PCB Lock, PA Polyamide Nylon 6/6, UL 94V-2, Glow-Wire Capable, Tin (Sn) Plating

**Series Number :** 172675

**Status :** Active

**Product Category :** PCB Headers and Receptacles



---

## Documents & Resources

### Drawings

[1726750213\\_sd.pdf](#)

[PK-5566-001-001.pdf](#)

### 3D Models and Design Files

[1726750213\\_stp.zip](#)

[SYM-172675-0213-001.zip](#)

### Specifications

[PS-45750-001-001.pdf](#)

[TS-5566-002-001.pdf](#)

---

## Product Environment Compliance

### Compliance

GADSL/IMDS	Not Relevant
China RoHS	
EU ELV	Not Relevant
Low-Halogen Status	Not Low-Halogen per IEC 61249-2-21
REACH SVHC	Not Contained per D(2024)6225-DC (07 Nov 2024)
EU RoHS	Compliant per EU 2015/863

### Multiple Part Product Compliance Statements

- Eu RoHS

- REACH SVHC

- Low-Halogen

Multiple Part Industry Compliance Documents

- IPC 1752A Class C
- IPC 1752A Class D
- Molex Product Compliance Declaration
- IEC-62474
- chemSHERPA (xml)

EU RoHS Certificate of Compliance

---

## Part Details

### General

Status	Active
Category	PCB Headers and Receptacles
Series	172675
Description	Mini-Fit Plus HCS Header, Dual Row, Vertical, 2 Circuits, with Snap-in Plastic Peg PCB Lock, PA Polyamide Nylon 6/6, UL 94V-2, Glow-Wire Capable, Tin (Sn) Plating
Application	Power, Wire-to-Board
Component Type	PCB Header
Product Name	Mini-Fit Plus HCS
UPC	887191750194

### Agency

CSA	LR19980
UL	E29179

### Electrical

Current - Maximum per Contact	13.0A
Voltage - Maximum	600V

### Physical

Breakaway	No
Circuits (Loaded)	2
Circuits (maximum)	2
Color - Resin	Black

Durability (mating cycles max)	100
First Mate / Last Break	No
Flammability	94V-2
Glow-Wire Capable	Yes
Guide to Mating Part	No
Keying to Mating Part	None
Lock to Mating Part	Yes
Material - Metal	Copper Alloy
Material - Plating Mating	Tin
Material - Resin	Nylon
Net Weight	0.730/g
Number of Rows	2
Orientation	Vertical
Packaging Type	Tray
PC Tail Length	1.80mm
PCB Locator	Yes
PCB Retention	Yes
PCB Thickness - Recommended	1.78mm
Pitch - Mating Interface	4.20mm
Pitch - Termination Interface	4.20mm
Polarized to Mating Part	Yes
Polarized to PCB	Yes
Shrouded	Fully
Stackable	No
Temperature Range - Operating	-40° to +105°C
Termination Interface Style	Through Hole

#### Solder Process Data

Max-Duration	5
Lead-Free Process Capability	WAVE
Max-Cycle	1
Max-Temp	220

---

#### Mates With / Use With

## Mates with Part(s)

Description	Part Number
Mini-Fit Jr. Dual Row Receptacle Housings	<u>46992</u>

---

This document was generated on Feb 13, 2025